

Sample:

Client: | Nature's Gift
Sample: | Cape Chamomile (*Eriocephalus punctulatus*)
Batch # | SA-58673
Cas Number | 94334-04-4
Type: | Essential Oil

Conclusion:

- No adulterants, diluents, or contaminants were detected via this method.
- This oil meets the expected profile for genuine essential oil of Cape Chamomile (*Eriocephalus punctulatus*).

X



Validated By:



Essential Validation Services

747 SW 2nd Ave, Gainesville, FL 32601

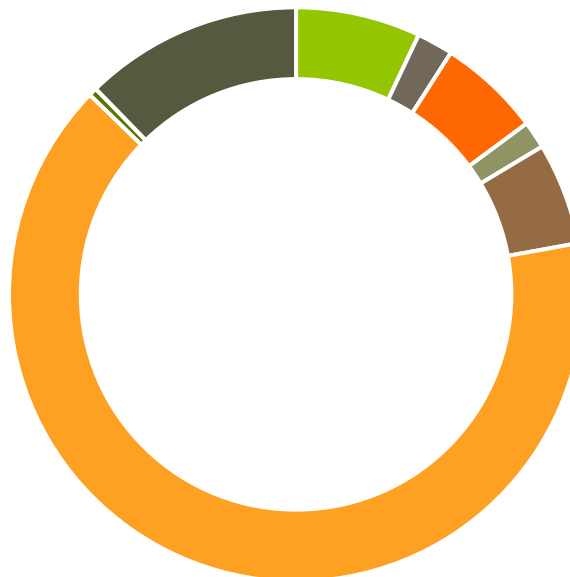
Phone: 317-361-5044 E-mail: Adam@essentialvalidationservices.com

Summary of Analyses

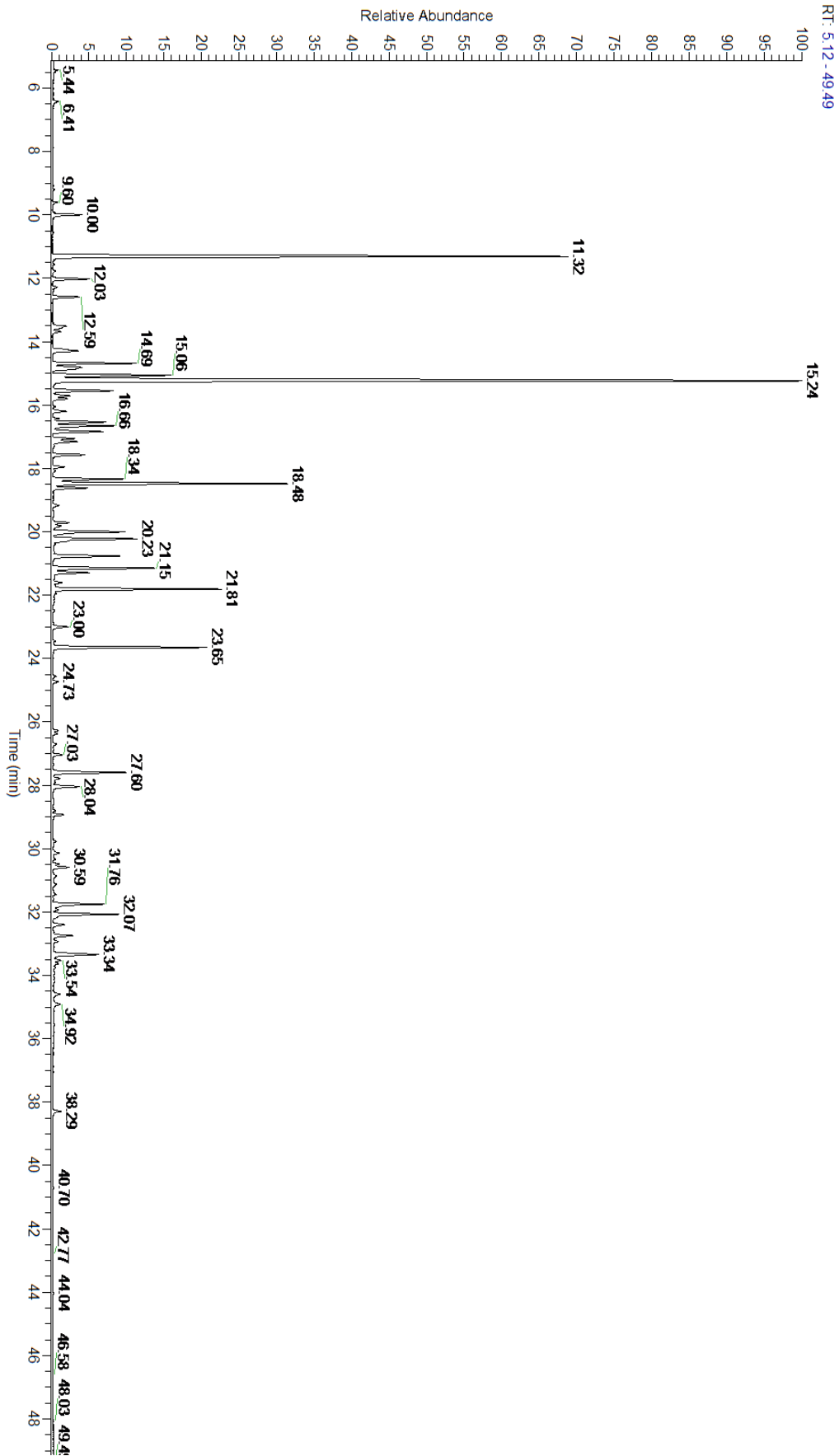
A fresh sample of Cape Chamomile (*Eriocephalus punctulatus*) Essential Oil (10 uL in .5to.5 mL Hexane + ETOH) was prepared and analyzed via split injection GC/EI-MS.

Main Compounds	Percentages
2-Methylbutyl isobutyrate	24.63%
Isobutyl isobutyrate	13.54%
2-Methylbutyl 2-methylbutyr:	5.77%
UK Chamomile	3.94%
Linalyl acetate	3.65%
Isoamyl isobutyrate	3.00%
Terpinen-4-ol	2.71%
Isoamyl tiglate	2.35%
Camphor	2.07%
Geranyl acetate	1.89%
Borneol	1.87%
Isobutyl isovalerate	1.86%
Isopentyl 2-methylbutyrate	1.70%

Monoterpenes	Sesquiterpenes	Monoterpenols	Sesquiterpenols	Ketones
7.03%	2.04%	5.78%	1.54%	5.75%
Esters	Ethers	Aldehydes	Phenols	Other
65.10%	0.47%	0.00%	0.00%	12.29%



- Monoterpenes ■ Sesquiterpenes ■ Monoterpenols
- Sesquiterpenols ■ Ketones ■ Esters
- Ethers ■ Phenols ■ Other



Total Percentage		86.27%			
Peak Number	RT	Area %	Compound Name	RI	Chemical Family
1	5.34	Co-Eluting	2-Methylbutyl alcohol	727.00	Aliphatic Alcohol
2	5.44	0.10%	3-Methylbutanol	731.00	Aliphatic Alcohol
3	6.41	0.08%	Methyl 2-methylbutyrate	764.00	Aliphatic Ester
4	9.11	0.02%	(E)-2-Methyl-2-butenyl acetate	779.00	Aliphatic Ester
5	10.00	0.72%	2-Methylbutyl acetate	871.00	Aliphatic Ester
6	11.32	13.54%	Isobutyl isobutyrate	908.00	Aliphatic Ester
7	11.55	0.06%	Tricyclene	923.00	Monoterpene
8	11.78	0.09%	alpha-Thujene	927.80	Monoterpene
9	12.03	0.90%	alpha-Pinene	936.10	Monoterpene
10	12.27	0.03%	Isobutyl butyrate	938.00	Aliphatic Ester
11	12.29	0.08%	Isobutyl methacrylate	939.00	Aliphatic Ester
12	12.59	0.68%	Camphene	950.30	Monoterpene
13	13.44	0.02%	Methallyl methacrylate	968.50	Aliphatic Ester
14	13.57	0.22%	Sabinene	973.00	Monoterpene
15	13.69	0.21%	beta-Pinene	974.00	Monoterpene
16	14.30	0.89%	Myrcene	989.20	Monoterpene
17	14.69	1.86%	Isobutyl isovalerate	990.00	Aliphatic Ester
18	14.82	1.24%	Isobutyl 2-methylbutyrate	991.50	Aliphatic Ester
19	15.06	3.00%	Isoamyl isobutyrate	1007.00	Aliphatic Ester
20	15.24	24.63%	2-Methylbutyl isobutyrate	1013.00	Aliphatic Ester
21	15.40	0.01%	meta-Cymene	1022.00	Monoterpene
22	15.55	1.66%	para-Cymene	1024.30	Monoterpene
23	15.71	0.50%	Limonene	1029.50	Monoterpene
24	15.81	0.38%	1,8-Cineole	1031.80	Monoterpene Ether
25	16.05	0.06%	(Z)-beta-Ocimene	1037.80	Monoterpene
26	16.20	0.39%	2-Methylbutyl methacrylate	1047.00	Aliphatic Ester
27	16.43	0.14%	(E)-beta-Ocimene	1047.70	Monoterpene
28	16.54	1.27%	Isobutyl angelate	1053.75	Aliphatic Ester
29	16.66	1.58%	UK Chamomile		
30	16.84	1.31%	gamma-Terpinene	1054.00	Monoterpene
31	17.06	0.53%	Methallyl angelate	1065.50	Aliphatic Ester
32	17.16	0.68%	trans-Sabinene hydrate	1072.00	Monoterpenol
33	17.57	0.80%	Butyl angelate	1092.00	Aliphatic Ester
34	17.96	0.30%	Terpinolene	1092.10	Monoterpene
35	18.08	0.09%	Isobutyl tiglate	1092.30	Aliphatic Ester
36	18.34	1.70%	Isopentyl 2-methylbutyrate	1097.00	Aliphatic Ester
37	18.48	5.77%	2-Methylbutyl 2-methylbutyrate	1102.10	Aliphatic Ester
38	18.62	0.85%	Isoamyl isovalerate	1105.60	Aliphatic Ester
39	18.84	0.03%	3-Methylamyl isobutyrate	1115.00	Aliphatic Ester
40	19.82	0.26%	trans-Pinocarveol	1143.75	Monoterpenol
41	20.01	2.07%	Camphor	1147.55	Monoterpene Ketone
42	20.23	2.35%	Isoamyl tiglate	1152.50	Aliphatic Ester
43	20.40	0.09%	Nerol oxide	1157.50	Monoterpene Ether

