



Sample:

Client: | Nature's Gift
Sample: | Spikenard (Nardostachys jatamansi)
Batch # | NE-58633
Cas Number | 8022-22-8
Type: | Essential Oil

Conclusion:

- No adulterants, diluents, or contaminants were detected via this method.
- This oil meets the expected profile for genuine essential oil of Spikenard (Nardostachys jatamansi).

X

Adam Christen

Validated By:



Essential Validation Services

747 SW 2nd Ave, Gainesville, FL 32601

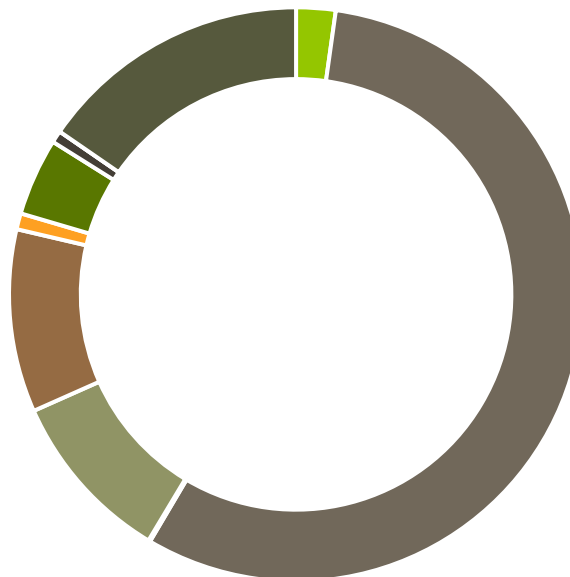
Phone: 317-361-5044 E-mail: Adam@essentialvalidationservices.com

Summary of Analyses

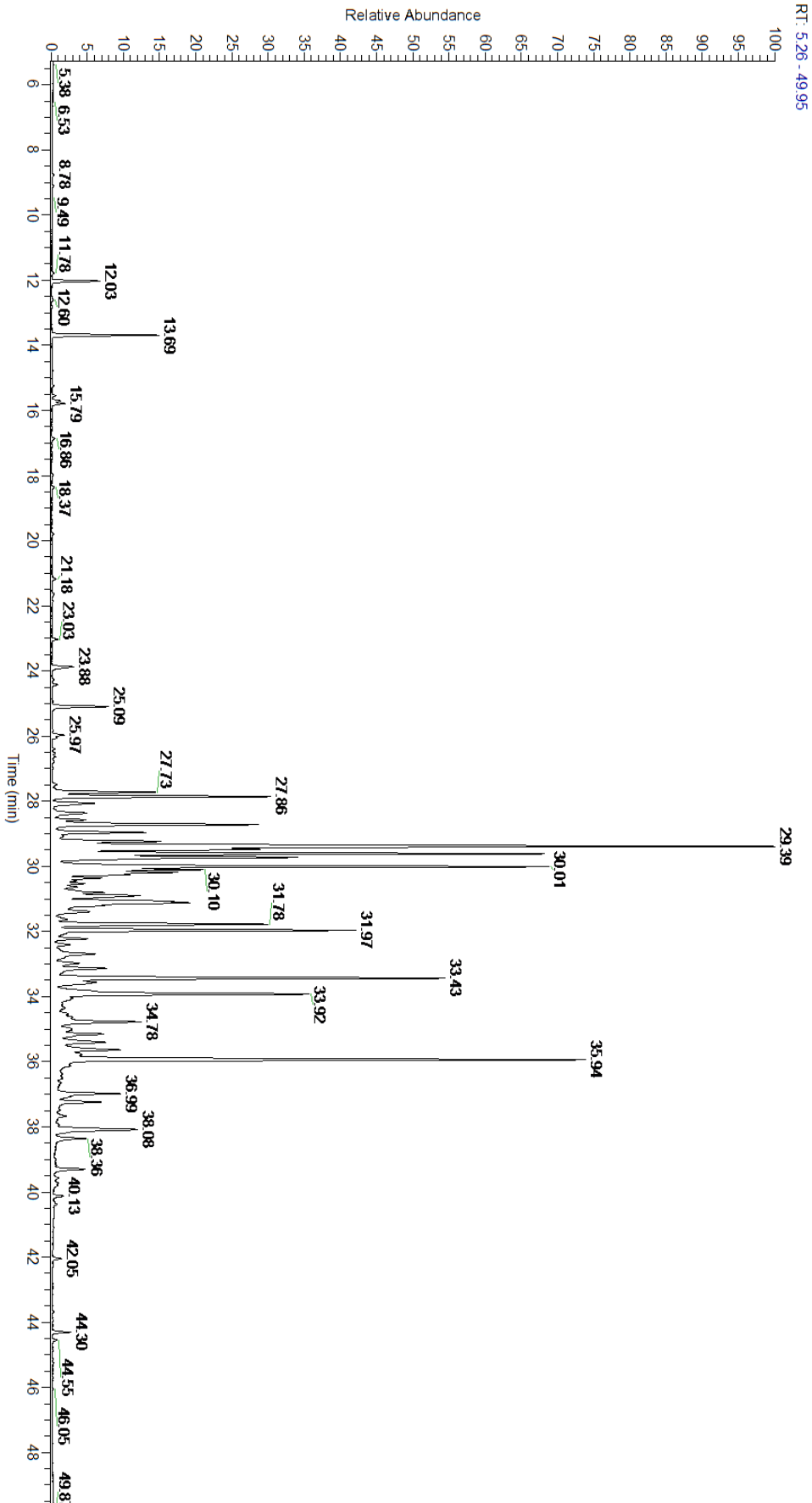
A fresh sample of Spikenard (Nardostachys jatamansi) Essential Oil (10 uL in .5to.5 mL Hexane + ETOH) was prepared and analyzed via split injection GC/EI-MS.

Main Compounds	Percentages
beta-Gurjunene	11.61%
Valeranone	8.07%
alpha-Patchoulene	6.91%
6,9-Guaiadiene	6.54%
Viridiflorol	5.77%
Unknown Spikenard	4.55%
Kessane	4.12%
Seychellene	3.88%
7-epi- α -Selinene	3.17%
alpha-Gurjunene	2.99%
Daucene	2.95%
alpha-Guaiene	2.73%
delta-Selinene	2.09%

Monoterpenes	Sesquiterpenes	Monoterpenols	Sesquiterpenols	Ketones
2.21%	56.10%	0.10%	9.72%	10.27%
Esters	Ethers	Aldehydes	Phenols	Other
0.90%	4.35%	0.68%	0.32%	15.35%



- Monoterpenes
- Sesquiterpenes
- Monoterpenols
- Sesquiterpenols
- Ketones
- Esters
- Ethers
- Phenols
- Other



Total Percentage		85.58%			
Peak Number	RT	Area %	Compound Name	RI	Chemical Family
1	8.78	0.02%	Isovaleric acid	827.00	Aliphatic Acid
2	11.78	0.02%	alpha-Thujene	927.80	Monoterpene
3	12.03	0.60%	alpha-Pinene	936.10	Monoterpene
4	12.60	0.02%	Camphene	950.30	Monoterpene
5	13.69	1.35%	beta-Pinene	974.00	Monoterpene
6	15.25	0.02%	alpha-Terpinene	1014.00	Monoterpene
7	15.55	0.04%	para-Cymene	1024.30	Monoterpene
8	15.71	0.10%	Limonene	1029.50	Monoterpene
9	15.71	Co-Eluting	beta-Phellandrene	1030.00	Monoterpene
10	15.79	0.16%	1,8-Cineole	1031.80	Monoterpene Ether
11	16.86	0.04%	gamma-Terpinene	1054.00	Monoterpene
12	17.98	0.02%	Terpinolene	1092.10	Monoterpene
13	18.37	0.03%	Linalool	1099.00	Monoterpenol
14	21.18	0.04%	Terpinen-4-ol	1180.57	Monoterpenol
15	21.64	0.03%	alpha-Terpineol	1191.71	Monoterpenol
16	23.03	0.07%	Methyl thymol	1234.57	Monoterpene Ether
17	23.88	0.32%	Methyl carvacrol	1247.50	Phenylpropanoid
18	25.09	0.75%	Methyl myrtenate	1305.00	Monoterpene Ester
19	25.97	0.15%	Myrtenyl acetate	1329.00	Monoterpene Ester
20	26.39	0.03%	delta-Elemene	1335.83	Sesquiterpene
21	26.80	0.03%	alpha-Longipinene	1357.90	Sesquiterpene
22	27.73	1.39%	beta-Patchoulene	1380.00	Sesquiterpene
23	27.86	2.95%	Daucene	1381.00	Sesquiterpene
24	28.06	0.69%	beta-Elemene	1389.20	Sesquiterpene
25	28.72	2.99%	alpha-Gurjunene	1412.00	Sesquiterpene
26	28.96	1.17%	beta-Caryophyllene	1427.14	Sesquiterpene
27	29.23	1.44%	UK Spikenard		
28	29.39	11.61%	beta-Gurjunene	1437.71	Sesquiterpene
29	29.48	2.73%	alpha-Guaiene	1438.67	Sesquiterpene
30	29.62	6.54%	6,9-Guaiadiene	1446.00	Sesquiterpene
31	29.73	3.88%	Seychellene	1461.40	Sesquiterpene
32	30.01	6.91%	alpha-Patchoulene	1459.50	Sesquiterpene
33	30.10	1.81%	gamma-Patchoulene	1454.00	Sesquiterpene
34	30.19	1.66%	cis-Muurolo-4(14),5-diene	1465.75	Sesquiterpene
35	30.25	0.69%	allo-Aromadendrene	1471.00	Sesquiterpene
36	30.36	0.52%	gamma-Gurjunene	1473.17	Sesquiterpene
37	30.44	0.13%	delta-Patchoulene	1476.30	Sesquiterpene
38	30.53	0.26%	beta-Chamigrene	1477.00	Sesquiterpene
39	30.63	0.17%	ar-Curcumene	1480.50	Sesquiterpene
40	30.81	0.63%	Germacrene D	1484.71	Sesquiterpene
41	30.90	1.50%	beta-Selinene	1487.57	Sesquiterpene
42	31.08	1.10%	alpha-Selinene	1492.50	Sesquiterpene
43	31.12	2.09%	delta-Selinene	1494.00	Sesquiterpene



ESSENTIAL VALIDATION SERVICES | 747 SW 2ND AVE GAINESVILLE, FLORIDA 32601 | 317-361-5044

44	31.21	0.54%	alpha-Murolene	1500.25	Sesquiterpene
45	31.39	0.73%	Valencene	1504.00	Sesquiterpene
46	31.63	0.18%	delta-Guaiene	1511.50	Sesquiterpene
47	31.78	3.17%	7-epi- α -Selinene	1520.33	Sesquiterpene
48	31.97	4.12%	Kessane	1528.00	Sesquiterpene Ether
49	32.23	0.45%	Furopolargone A	1540.15	Sesquiterpene Ketone
50	32.41	0.21%	Maaliol	1565.00	Sesquiterpenol
51	32.69	0.91%	Norpatchoulenol	1577.00	Norsesquiterpenol
52	32.98	0.37%	Unknown Spikenard		
53	33.14	0.90%	Spathulenol	1587.00	Sesquiterpenol
54	33.43	5.77%	Viridiflorol	1596.00	Sesquiterpenol
55	33.55	0.91%	Unknown Spikenard		
56	33.92	4.55%	Unknown Spikenard		
57	34.06	0.32%	Rosifoliol	1612.33	Sesquiterpenol
58	34.78	1.40%	Unknown Spikenard		
59	35.01	0.10%	T-Cadinol	1640.43	Sesquiterpenol
60	35.15	0.67%	T-Murolol	1643.29	Sesquiterpenol
61	35.40	0.74%	alpha-Murolol	1649.33	Sesquiterpenol
62	35.64	1.01%	Patchouli alcohol	1660.50	Sesquiterpenol
63	35.77	0.40%	Unknown Spikenard		
64	35.94	8.07%	Valeranone	1671.50	Sesquiterpene Ketone
65	36.99	1.13%	Unknown Spikenard		
66	37.24	0.68%	Valerenal	1717.75	Sesquiterpene Aldehyde
67	37.48	0.05%	Eremophilone	1720.00	Sesquiterpene Ketone
68	38.08	1.70%	Aristolone	1764.00	Sesquiterpene Ketone
69	38.36	0.50%	Unknown Spikenard		
70	39.30	0.47%	Unknown Spikenard		
71	39.80	0.06%	Unknown Spikenard		
72	40.13	0.12%	Pseudoisoeugenyl		
73	44.30	0.21%	Unknown Spikenard		

- This report is the digitally signed and will only be considered valid if the signature is intact.
 - This report may not be published without the consent of Essential Validation Services.
 - Chromatograph image may not show full run time