



Sample:

Client: | Nature's Gift
Sample: | Corn Mint (Mentha arvensis)
Batch # | NE-58635
CAS Number | 68917-18-0
Type: | Essential Oil

Conclusion:

- No adulterants, diluents, or contaminants were detected via this method.
- This oil meets the expected profile for genuine essential oil of Corn Mint (Mentha arvensis).



X

Adam Christen

Validated By:

Essential Validation Services

747 SW 2nd Ave, Gainesville, FL 32601

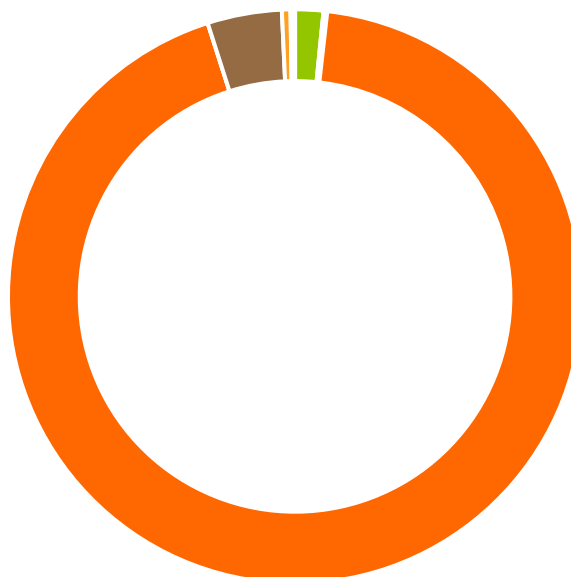
Phone: 317-361-5044 E-mail: Adam@essentialvalidationservices.com

Summary of Analyses

A fresh sample of Corn Mint (Mentha arvensis) Essential Oil (10 uL in .5to.5 mL Hexane + ETOH) was prepared and analyzed via split injection GC/EI-MS.

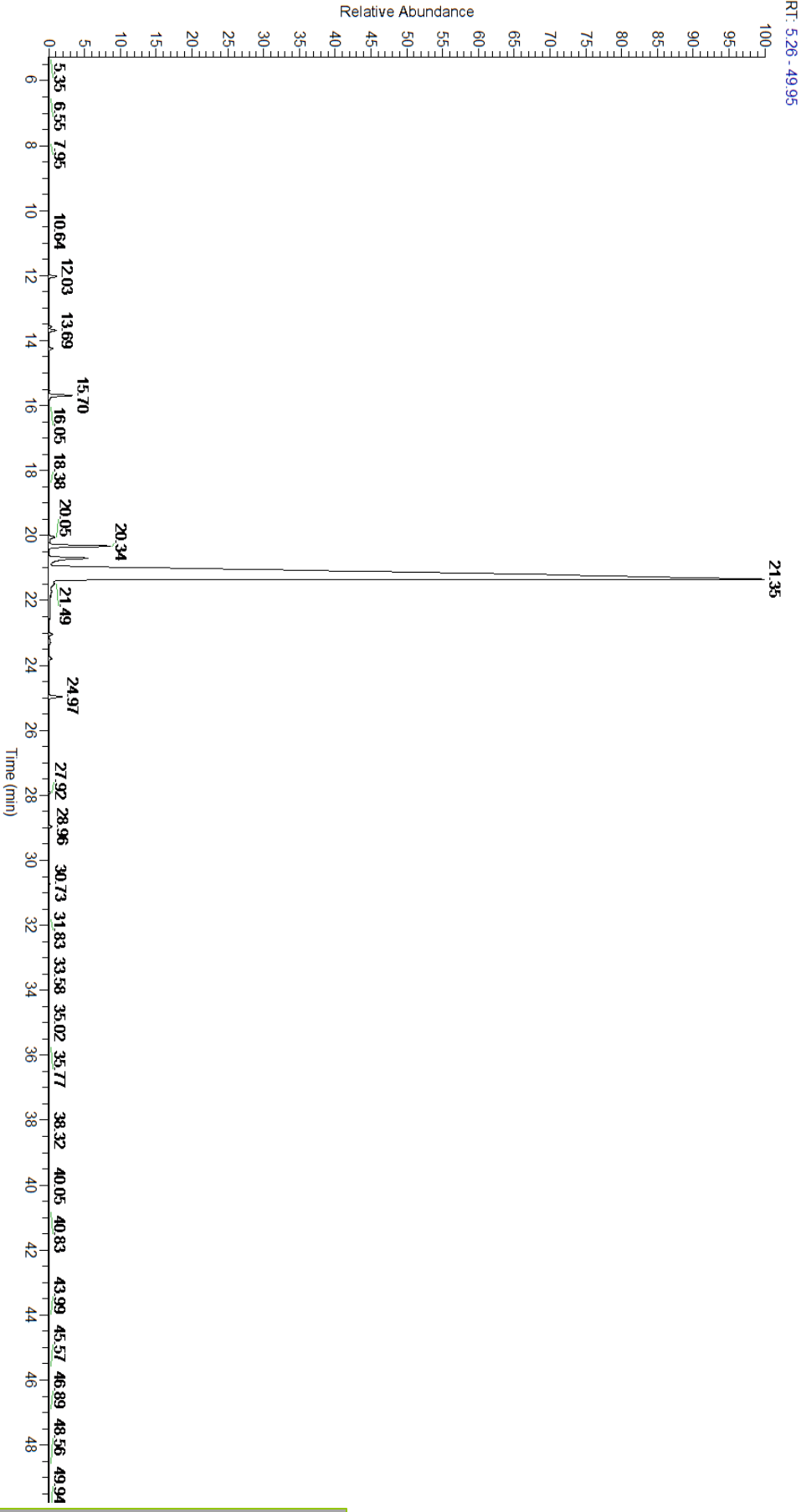
Main Compounds	Percentages
Menthol	92.82%
Menthone	2.24%
Isomenthone	1.79%
Limonene	0.81%

Monoterpenes	Sesquiterpenes	Monoterpenols	Sesquiterpenols	Ketones
1.59%	0.21%	93.28%	0.00%	4.19%
Esters	Ethers	Aldehydes	Phenols	Other
0.48%	0.06%	0.00%	0.00%	0.20%



- Monoterpenes ■ Sesquiterpenes ■ Monoterpenols
- Sesquiterpenols ■ Ketones ■ Esters
- Ethers ■ Phenols ■ Other

ESSENTIAL VALIDATION SERVICES | 747 SW 2ND AVE GAINESVILLE, FLORIDA 32601 | 317-361-5044



ESSENTIAL VALIDATION SERVICES | 747 SW 2ND AVE GAINESVILLE, FLORIDA 32601 | 317-361-5044

Total Percentage		99.82%			
Peak Number	RT	Area %	Compound Name	RI	Chemical Family
1	10.64	0.01%	2,5-Diethyltetrahydrofuran	895.30	Furan
2	12.03	0.27%	alpha-Pinene	936.10	Monoterpene
3	12.61	0.01%	Camphene	950.30	Monoterpene
4	13.58	0.08%	Sabinene	973.00	Monoterpene
5	13.69	0.26%	beta-Pinene	974.00	Monoterpene
6	14.25	0.13%	Myrcene	989.20	Monoterpene
7	14.49	0.01%	3-Octanol	992.00	Aliphatic Alcohol
8	14.75	0.01%	alpha-Phellandrene	1002.00	Monoterpene
9	15.53	0.02%	para-Cymene	1024.30	Monoterpene
10	15.70	0.81%	Limonene	1029.50	Monoterpene
11	15.80	0.04%	1,8-Cineole	1031.80	Monoterpene Ether
12	18.38	0.01%	Linalool	1099.00	Monoterpenol
13	20.05	0.27%	Isopulegol	1151.25	Monoterpenol
14	20.34	2.24%	Menthone	1155.00	Monoterpene Ketone
15	20.71	1.79%	Isomenthone	1164.33	Monoterpene Ketone
16	20.71	Co-Eluting	Menthofuran	1164.00	Monoterpene Ether
17	21.35	92.82%	Menthol	1177.40	Monoterpenol
18	21.49	0.14%	Isomenthol	1183.75	Monoterpenol
19	21.73	0.04%	alpha-Terpineol	1191.71	Monoterpenol
20	23.03	0.11%	(Z)-Hex-3-en-1-ylisovalerate?		
21	23.29	0.05%	Pulegone	1244.43	Monoterpene Ketone
22	23.78	0.11%	Piperitone	1258.50	Monoterpene Ketone
23	24.97	0.47%	Menthyl acetate	1297.00	Monoterpene Ester
24	25.48	0.01%	Isomenthyl acetate	1306.00	Monoterpene Ester
25	27.92	0.05%	beta-Bourbonene	1388.70	Sesquiterpene
26	28.06	0.01%	beta-Elemene	1389.20	Sesquiterpene
27	28.96	0.11%	beta-Caryophyllene	1427.14	Sesquiterpene
28	29.24	0.01%	beta-Copaene	1445.00	Sesquiterpene
29	30.73	0.02%	Germacrene D	1484.71	Sesquiterpene
30	31.83	0.01%	delta-Cadinene	1524.14	Sesquiterpene
31	33.58	0.02%	Caryophyllene oxide	1594.86	Sesquiterpene Ether