

Sample:

Client: | Nature's Gift
Sample: | Blue Cypress (Callitris intratropica)
Batch # | AU-58636
CAS Number | 8013-86-3
Type: | Essential Oil

Conclusion:

- No adulterants, diluents, or contaminants were detected via this method.
- This oil meets the expected profile for genuine essential oil of Blue Cypress (Callitris intratropica)



X 

Validated By:

Essential Validation Services

747 SW 2nd Ave, Gainesville, FL 32601

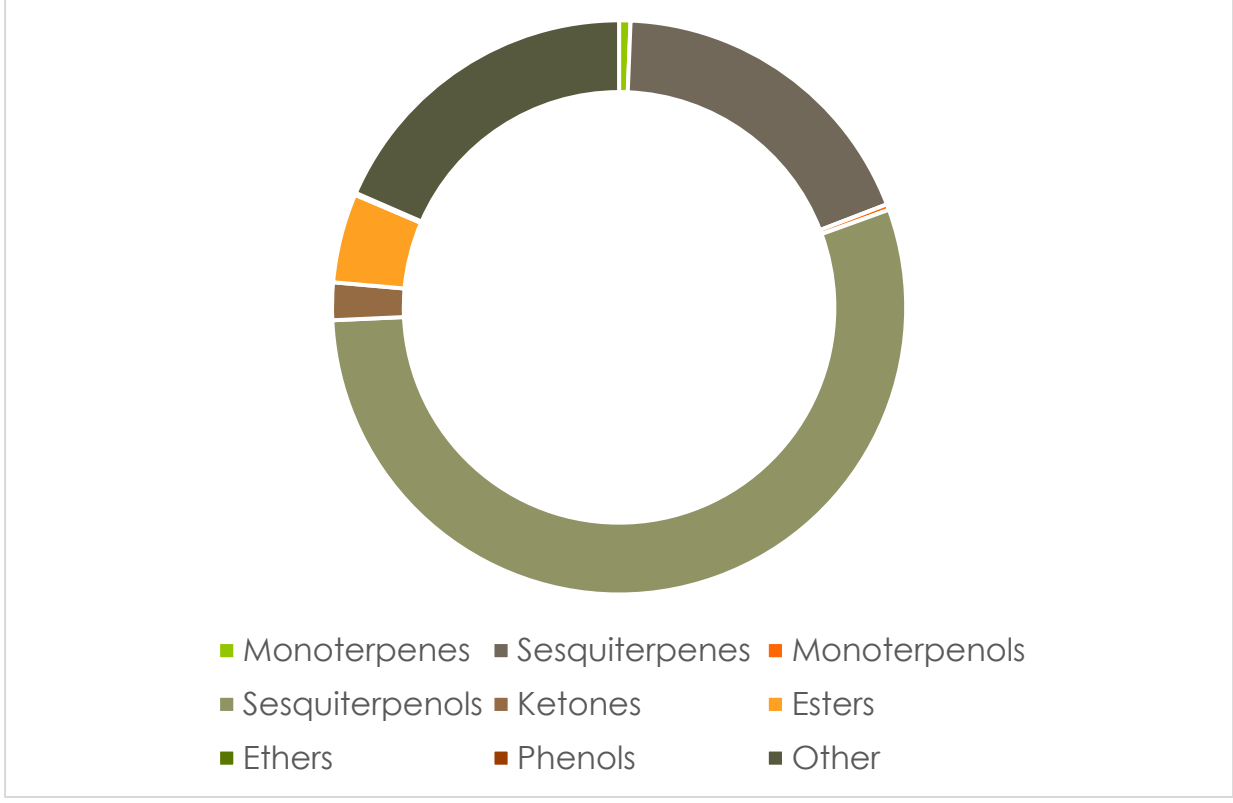
Phone: 317-361-5044 E-mail: Adam@essentialvalidationservices.com

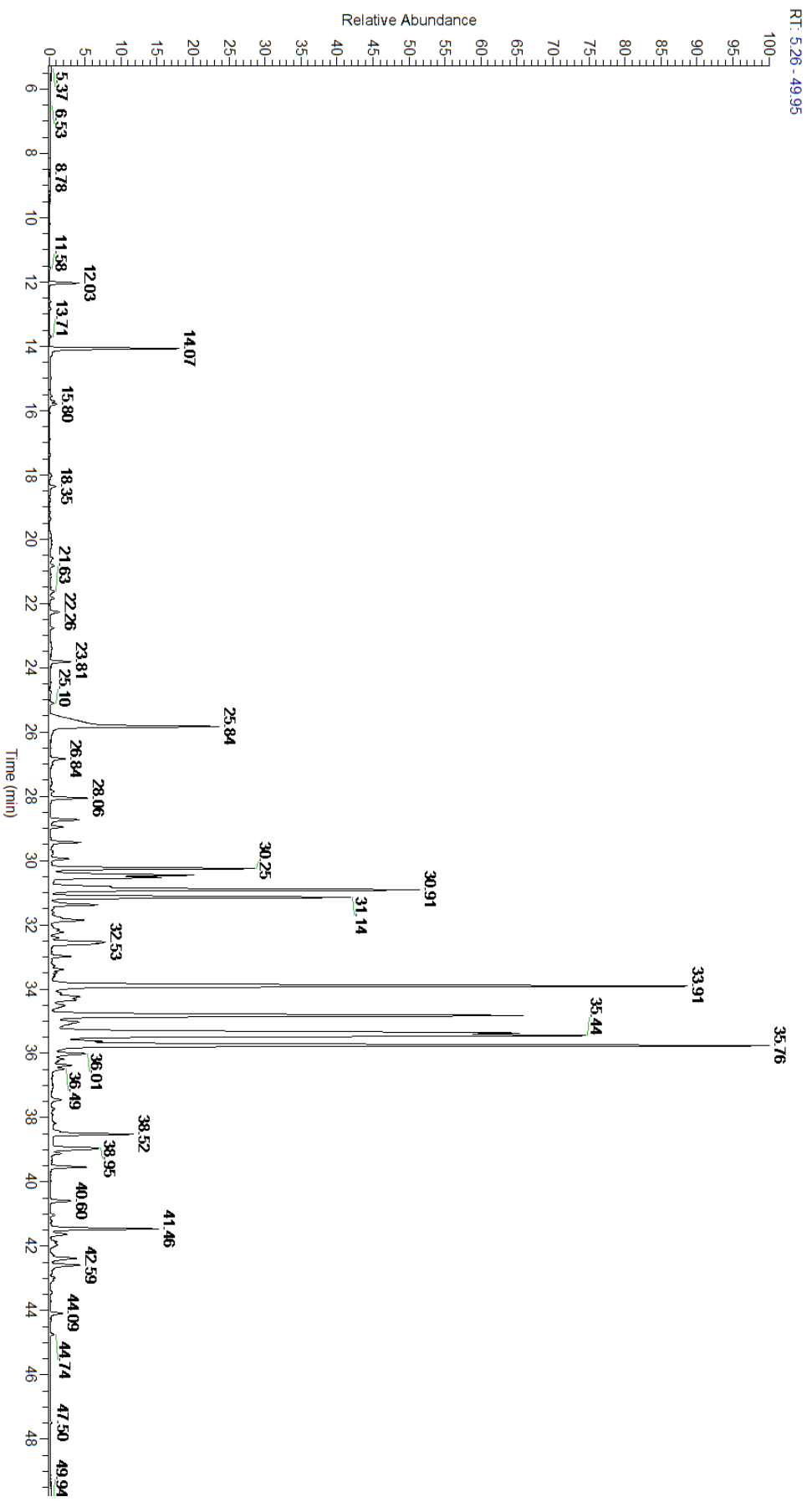
Summary of Analyses

A fresh sample of Blue Cypress (Callitris intratropica) Essential Oil (10 uL in .5to.5 mL Hexane + ETOH) was prepared and analyzed via split injection GC/EI-MS.

Main Compounds	Percentages
Bulnesol	13.23%
Guaiol	11.79%
beta-Eudesmol	9.71%
alpha-Eudesmol	9.58%
gamma-Eudesmol	9.11%
beta-Selinene	6.15%
alpha-Selinene	4.78%
Methyl geranate	4.67%
Thujopsadiene	3.25%
beta-Acoradiene?	2.36%
6-Methyl-5-hepten-2-one	1.86%
Dihydrocolumellarin	1.72%
gamma-Muurolene	1.61%

Monoterpenes	Sesquiterpenes	Monoterpenols	Sesquiterpenols	Ketones
0.64%	18.51%	0.32%	54.80%	2.11%
Esters	Ethers	Aldehydes	Phenols	Other
5.02%	0.10%	0.01%	0.02%	18.47%





ESSENTIAL VALIDATION SERVICES | 747 SW 2ND AVE GAINESVILLE, FLORIDA 32601 | 317-361-5044

Total Percentage		86.05%			
Peak Number	RT	Area %	Compound Name	RI	Chemical Family
1	11.58	0.01%	Tricyclene	923.00	Monoterpene
2	12.03	0.43%	alpha-Pinene	936.10	Monoterpene
3	12.61	0.01%	Camphene	950.30	Monoterpene
4	12.83	0.01%	Thuja-2,4(10)-diene	953.00	Monoterpene
5	13.71	0.02%	Sabinene	973.00	Monoterpene
6	14.07	1.86%	6-Methyl-5-hepten-2-one	982.00	Aliphatic Ketone
7	15.00	0.02%	delta-3-Carene	1008.00	Monoterpene
8	15.55	0.03%	para-Cymene	1024.30	Monoterpene
9	15.71	0.07%	Limonene	1029.50	Monoterpene
10	15.71	Co-Eluting	beta-Phellandrene	1030.00	Monoterpene
11	15.80	0.10%	1,8-Cineole	1031.80	Monoterpene Ether
12	17.38	0.01%	Coniferous biomarker	1076.00	Monoterpenol
13	18.03	0.04%	para-Cymenene	1092.43	Monoterpene
14	18.35	0.11%	Linalool	1099.00	Monoterpenol
15	19.36	0.01%	alpha-Campholenal	1125.29	Monoterpene Aldehyde
16	20.04	0.04%	Camphor	1147.55	Monoterpene Ketone
17	20.59	0.04%	cis-Pinocamphone	1172.00	Monoterpene Ketone
18	20.83	0.06%	Borneol	1168.71	Monoterpenol
19	21.18	0.01%	Terpinen-4-ol	1180.57	Monoterpenol
20	21.63	0.07%	alpha-Terpineol	1191.71	Monoterpenol
21	21.84	0.06%	Myrtenol	1198.00	Monoterpenol
22	22.26	0.17%	Verbenone	1209.71	Monoterpene Ketone
23	23.40	0.02%	Methyl carvacrol	1247.50	Phenylpropanoid
24	23.81	0.31%	Methyl citronellate	1261.00	Monoterpene Ester
25	25.84	4.67%	Methyl geranate	1323.80	Monoterpene Ester
26	26.84	0.25%	alpha-Cubebene	1355.71	Sesquiterpene
27	27.61	0.03%	alpha-Copaene	1379.00	Sesquiterpene
28	28.06	0.56%	beta-Elemene	1389.20	Sesquiterpene
29	28.73	0.51%	UK Blue Cypress		
30	28.96	0.20%	beta-Caryophyllene	1427.14	Sesquiterpene
31	29.44	0.44%	alpha-Guaiene	1438.67	Sesquiterpene
32	29.53	0.03%	Aromadendrene	1449.80	Sesquiterpene
33	29.70	0.02%	beta-Barbatene	1458.10	Sesquiterpene
34	29.94	0.28%	alpha-Humulene	1461.43	Sesquiterpene
35	30.25	3.25%	Thujopsadiene	1465.10	Sesquiterpene
36	30.45	2.36%	beta-Acoradiene?		
37	30.53	1.61%	gamma-Muurolene	1478.86	Sesquiterpene
38	30.91	6.15%	beta-Selinene	1487.57	Sesquiterpene
39	31.14	4.78%	alpha-Selinene	1492.50	Sesquiterpene
40	31.38	0.81%	delta-Guaiene	1511.50	Sesquiterpene
41	31.86	0.82%	UK Blue Cypress		
42	32.23	0.23%	Elemol	1538.00	Sesquiterpenol
43	32.40	0.10%	Selina-3,7(11)-diene	1544.50	Sesquiterpene

44	32.53	0.86%	UK Blue Cypress		
45	32.59	0.67%	UK Blue Cypress		
46	33.91	11.79%	Guaiol	1603.86	Sesquiterpenol
47	34.24	0.61%	Rosifoliol?		
48	34.83	9.11%	gamma-Eudesmol	1608.00	Sesquiterpenol
49	35.03	0.60%	Hinesol	1637.50	Sesquiterpenol
50	35.37	9.71%	beta-Eudesmol	1647.86	Sesquiterpenol
51	35.44	9.58%	alpha-Eudesmol	1652.86	Sesquiterpenol
52	35.63	0.65%	UK Blue Cypress		
53	35.76	13.23%	Bulnesol	1666.14	Sesquiterpenol
54	36.18	0.13%	epi-beta-bisabolol	1678.50	Sesquiterpenol
55	36.49	0.20%	alpha-Bisabolol	1684.43	Sesquiterpenol
56	37.44	0.18%	Chamazulene	1717.50	Azulene
57	38.18	0.09%	gamma-Costol	1745.05	Sesquiterpenol
58	38.32	0.02%	beta-Costol	1765.05	Sesquiterpenol
59	38.43	0.11%	alpha-Costol	1773.05	Sesquiterpenol
60	38.52	1.28%	Guaiazulene	1779.00	Azulene
61	38.95	1.15%	UK Blue Cypress		
62	39.12	0.16%	Callitrin	1803.00	Sesquiterpene lactone
63	39.54	0.56%	UK Blue Cypress		
64	40.60	0.34%	UK Blue Cypress		
65	41.46	1.72%	Dihydrocolumellarin	1899.99	Sesquiterpene lactone
66	41.63	0.33%	UK Blue Cypress		
67	42.38	0.53%	Callitrisin	1941.00	Sesquiterpene lactone
68	42.59	0.62%	Columellarin	1952.00	Sesquiterpene lactone
69	42.99	0.07%	Dihydrocallitrisin	1968.00	Sesquiterpene lactone
70	43.43	0.04%	Manool oxide	1987.00	Diterpene Ester
71	44.09	0.21%	UK Blue Cypress		
72	44.74	0.05%	Abietatriene	2053.67	Diterpene