

Sample:

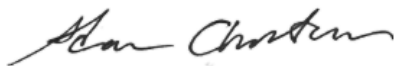
Client: | Nature's Gift
Sample: | Ylang Ylang Complete (Cananga odorata)
Batch # | MA-20361
CAS Number | 8006-81-3
Type: | Essential Oil

Conclusion:

- No adulterants, diluents, or contaminants were detected via this method.



X



Validated By:

Essential Validation Services

747 SW 2nd Ave, Gainesville, FL 32601

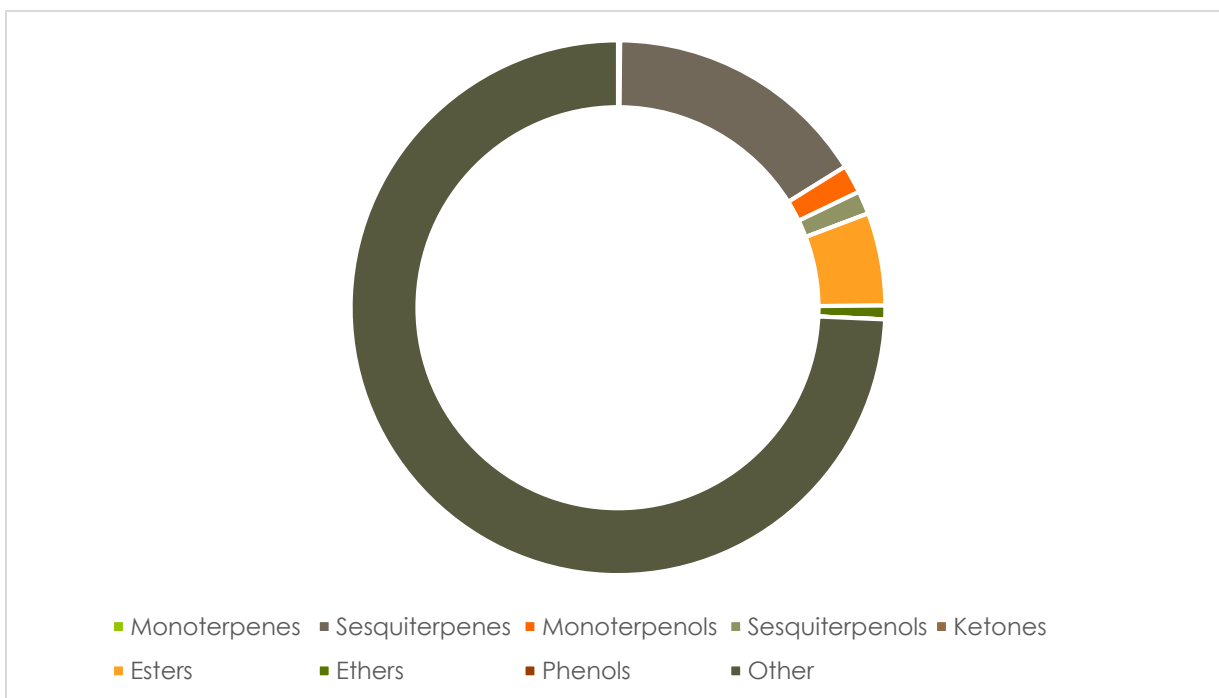
Phone: 317-361-5044 E-mail: Adam@essentialvalidationservices.com

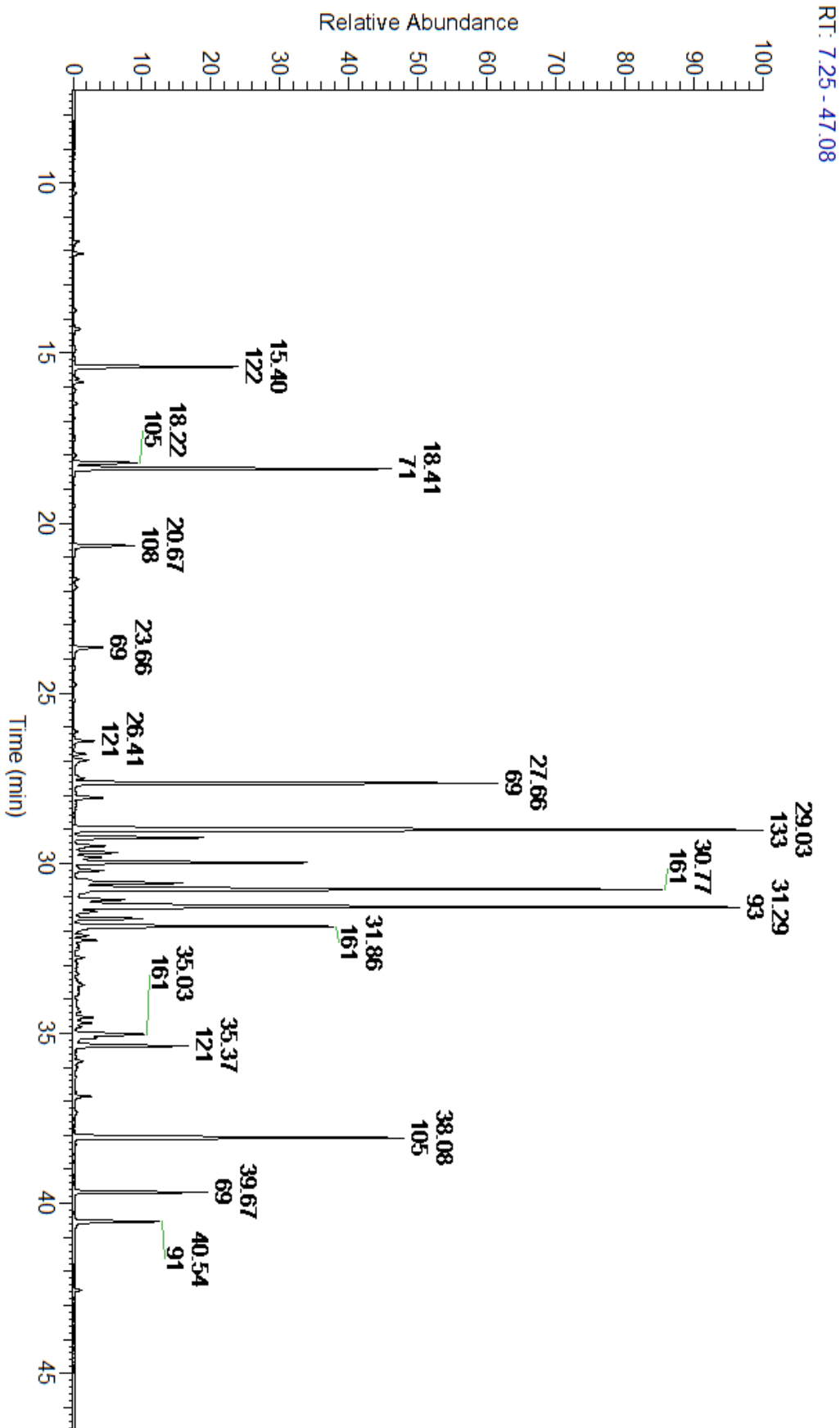
Summary of Analyses

A fresh sample of Ylang Ylang Complete (Cananga odorata) Essential Oil (10 uL in .5 to .5 mL Hexane + ETOH) was prepared and analyzed via split injection GC/EI-MS.

Main Compounds	Percentages
beta-Caryophyllene	16.27%
(E,E)-alpha-Farnesene	13.05%
Germacrene D	11.61%
Geranyl acetate	7.53%
Benzyl benzoate	6.80%
Linalool	5.74%
delta-Cadinene	4.82%
alpha-Humulene	4.43%
para-Methyl anisole	2.90%
gamma-Murolene	2.30%
beta-Copaene	2.26%
alpha-Cadinol	2.20%
(E,E)-Farnesyl acetate	2.06%

Monoterpenes	Sesquiterpenes	Monoterpenols	Sesquiterpenols	Ketones
0.49%	60.31%	6.45%	5.29%	0.00%
Esters	Ethers	Aldehydes	Phenols	Other
21.10%	3.12%	0.00%	0.47%	2.77%





Total Percentage		97.23%			
Peak Number	RT	Area %	Compound Name	RI	Chemical Family
1	10.29	0.02%	3-Methyl-3-buten-1-yl acetate	910.00	Aliphatic Ester
2	11.72	0.09%	Prenyl acetate	914.00	Aliphatic Ester
3	12.08	0.16%	alpha-Pinene	936.10	Monoterpene
4	13.75	0.04%	beta-Pinene	974.00	Monoterpene
5	14.29	0.11%	Myrcene	989.20	Monoterpene
6	14.91	0.02%	(Z)-3-Hexenyl acetate	1004.00	Aliphatic Ester
7	15.14	0.01%	Hexyl acetate	1009.00	Aliphatic Ester
8	15.40	2.90%	para-Methyl anisole	1015.00	Monoterpene Ether
9	15.75	0.07%	Limonene	1029.50	Monoterpene
10	15.85	0.16%	1,8-Cineole	1031.80	Monoterpene Ether
11	16.08	0.03%	(Z)-beta-Ocimene	1037.80	Monoterpene
12	16.48	0.05%	(E)-beta-Ocimene	1047.70	Monoterpene
13	18.01	0.03%	Terpinolene	1092.10	Monoterpene
14	18.22	1.16%	Methyl benzoate	1096.10	Phenolic Ester
15	18.41	5.74%	Linalool	1099.00	Monoterpenol
16	20.67	1.13%	Benzyl acetate	1161.25	Phenolic Ester
17	20.92	0.02%	Ethyl benzoate	1169.00	Phenolic Ester
18	21.64	0.08%	alpha-Terpineol	1191.71	Monoterpenol
19	21.81	0.01%	Methyl salicylate	1192.29	Phenolic Ester
20	21.88	0.06%	Methyl chavicol	1193.40	Phenylpropanoid
21	23.66	0.63%	Geraniol	1255.29	Monoterpenol
22	24.76	0.04%	(E)-Anethole	1283.00	Phenylpropanoid
23	25.20	0.01%	1-Nitro-2-phenyl ethane	1284.50	Phenol
24	26.41	0.37%	delta-Elemene	1335.83	Sesquiterpene
25	26.78	0.20%	alpha-Cubebene	1355.71	Sesquiterpene
26	26.97	0.33%	Eugenol	1365.89	Phenylpropanoid
27	27.50	0.21%	alpha-Ylangene	1371.33	Sesquiterpene
28	27.66	7.53%	Geranyl acetate	1378.50	Monoterpene Ester
29	27.94	0.04%	beta-Bourbonene	1388.70	Sesquiterpene
30	28.08	0.59%	beta-Elemene	1389.20	Sesquiterpene
31	28.22	0.03%	beta-Cubebene	1390.50	Sesquiterpene
32	28.30	0.03%	Methyleugenol	1407.27	Phenylpropanoid
33	29.03	16.27%	beta-Caryophyllene	1427.14	Sesquiterpene
34	29.25	2.26%	beta-Copaene	1445.00	Sesquiterpene
35	29.49	0.61%	(E)-Cinnamyl acetate	1443.50	Phenylpropanoid Ester
36	29.82	0.55%	(Z)-beta-Farnesene	1453.40	Sesquiterpene
37	29.98	4.43%	alpha-Humulene	1461.43	Sesquiterpene
38	30.21	0.53%	trans-Cadina-1,4-diene	1462.50	Sesquiterpene
39	30.58	2.30%	gamma-Murolene	1478.86	Sesquiterpene
40	30.77	11.61%	Germacrene D	1484.71	Sesquiterpene
41	31.08	0.87%	alpha-Murolene	1500.25	Sesquiterpene
42	31.29	13.05%	(E,E)-alpha-Farnesene	1508.14	Sesquiterpene

