



316 Old Hickory Blvd East, Madison, TN 37115

tel (615)612-4270 fax (615)860-9171

sold@naturesgift.com

Healing Body, Mind and Spirit with Pure Essential Oils

Since 1995

www.naturesgift.com

## Cypriol (Nagarmotha)

### Cyperus scariosus

Batch #IN-58922

India

Monoterpenes	12.2%
$\alpha$ pinene	7.79
$\beta$ pinene	1.89
myrcene	0.83
$\gamma$ terpinene	0.52
para cymene	0.46
terpinolene	0.26
$\alpha$ terpinene	0.16
$\alpha$ thujene	0.08
$\alpha$ phellandrene	0.07
camphene	0.06
(Z) $\beta$ ocimene	0.04
(E) $\beta$ ocimene	0.04

Monoterpenols	5.67%
$\alpha$ terpinenol	4.82
terpinen-4-ol	0.55
linalol	0.15
$\delta$ terpineol	0.10
isopulegol	0.05

Esters	1.29%
$\alpha$ -terpinyl acetate	1.29

Ethers	61.44%
1,8-cineole +limonene	61.19
caryophyllene oxide	0.25

Phenols	0.06%
benzaldehyde	0.06

Sesquiterpenes	4.38%
$\beta$ caryophyllene	2.17
viridiflorene	1.10
$\alpha$ humulene	0.31
$\delta$ cadinene	0.18
$\beta$ selinene	0.16
$\alpha$ guaiene	0.15
$\gamma$ cadinene	0.13
$\alpha$ gurjunene	0.11
$\gamma$ selinene	0.07

Sesquiterpenols	13.85%
(E)-nerolidol	7.17
viridiflorol	5.88
ledol	0.57
palustrol	0.16
$\tau$ cadinol	0.07

Raw Material: dried rhisomes

Botanical Name: Cyperus scariosus

Production Method: Steam distillation

Date of Analysis: 5/3/2019

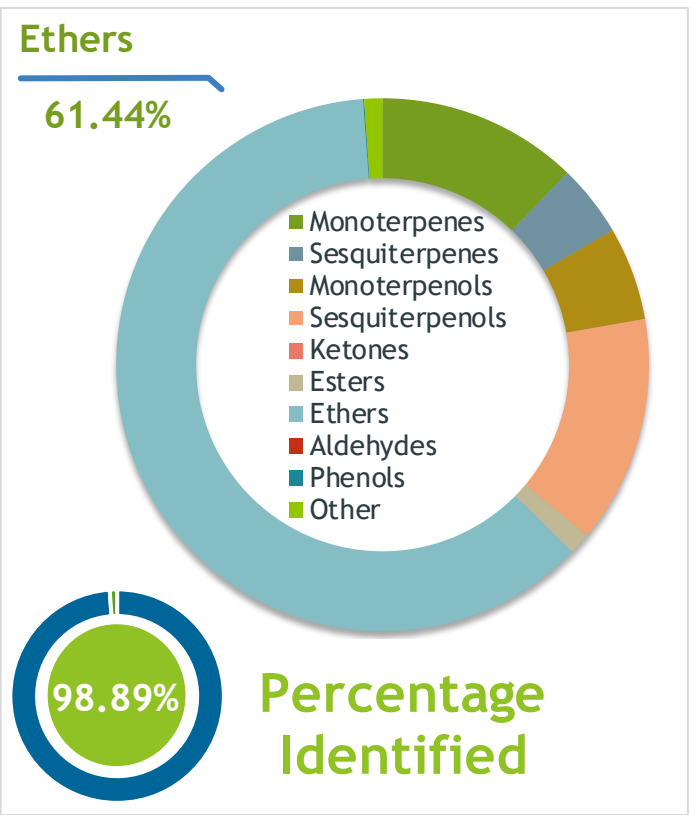
Client	 <i>Nature's Gift</i>	Source	
--------	--	--------	--

*Cypriol (Cyperus scariosus)*  
IN-58922

Sample	<p>Cypriol (Cyperus scariosus)</p> <p>Batch #:.....   IN-58922</p> <p>Type:.....   Essential Oil</p> <p>CAS Number:...   68916-60-9</p> <p style="text-align: center; color: #76923c;">Nature's Gift</p>
--------	--

Client	 <i>Nature's Gift</i>	Website	
--------	---	---------	---

Primary	<p><u>61.19%</u>   <u>1,8-Cineole (Co-Eluting)</u></p> <p><u>7.79%</u>   <u>alpha-Pinene</u></p> <p><u>7.17%</u>   <u>(E)-Nerolidol</u></p>
---------	---



Result	
--------	---

Conclusion	<p>No adulterants, diluents, or contaminants were detected via this method. This oil meets the expected profile for genuine essential oil of Cypriol (Cyperus scariosus)</p> <p style="text-align: right;">Internal Number:   EVS-2922</p>
------------	--



*Essential Validation Services*

747 SW 2nd Ave IMB 12 Suite 306  
Gainesville, FL 32601

317.361.5044 | <https://essentialvalidationservices.com/>

adam@essentialvalidationservices.com



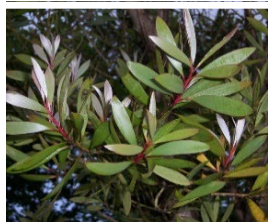
Monoterpenes	12.2	12.20%
Sesquiterpenes	4.38	4.38%
Monoterpenols	5.67	5.67%
Sesquiterpenols	13.85	13.85%
Ketones	0.00	0.00%
Esters	1.29	1.29%
Ethers	61.44	61.44%
Aldehydes	0.00	0.00%
Phenols	0.06	0.06%
Other	1.11	1.11%

ESSENTIAL VALIDATION SERVICES | 747 SW 2<sup>ND</sup> AVE GAINESVILLE, FLORIDA 32601 | 317-361-5044

Client



Source



*Cypriol (Cypriol (Cyperus scariosus))*  
IN-58922

Total Percentage		98.89%			
Number	RT	Area %	Compound Name	RI	Chemical Family
1	12.53	0.08%	alpha-Thujene	927.80	Monoterpene
2	12.81	7.79%	alpha-Pinene	936.10	Monoterpene
3	13.42	0.06%	Camphene	950.30	Monoterpene
4	13.91	0.06%	Benzaldehyde	958.00	Simple Phenolic
5	14.60	1.89%	beta-Pinene	974.00	Monoterpene
6	15.20	0.83%	Myrcene	989.20	Monoterpene
7	15.74	0.07%	alpha-Phellandrene	1002.00	Monoterpene
8	16.28	0.16%	alpha-Terpinene	1014.00	Monoterpene
9	16.63	0.46%	para-Cymene	1024.30	Monoterpene
10	16.99	61.19%	1,8-Cineole	1031.80	Monoterpene Ether
11	17.00	Co-Eluting	Limonene	1029.50	Monoterpene
12	17.15	0.04%	(Z)-beta-Ocimene	1037.80	Monoterpene
13	17.58	0.04%	(E)-beta-Ocimene	1047.70	Monoterpene
14	18.03	0.52%	gamma-Terpinene	1054.00	Monoterpene
15	19.25	0.26%	Terpinolene	1092.10	Monoterpene
16	19.65	0.15%	Linalool	1099.00	Monoterpenol
17	21.50	0.05%	Isopulegol	1151.25	Monoterpenol
18	22.32	0.10%	delta-Terpineol	1166.00	Monoterpenol
19	22.72	0.55%	Terpinen-4-ol	1180.57	Monoterpenol
20	23.24	4.82%	alpha-Terpineol	1191.71	Monoterpenol
21	28.77	1.29%	alpha-Terpinyl acetate	1353.00	Monoterpene Ester
22	30.93	0.11%	alpha-Gurjunene	1412.00	Sesquiterpene
23	31.26	2.17%	beta-Caryophyllene	1427.14	Sesquiterpene
24	31.91	0.15%	alpha-Guaiene	1438.67	Sesquiterpene
25	32.34	0.31%	alpha-Humulene	1461.43	Sesquiterpene
26	32.97	0.07%	gamma-Selinene	1465.50	Sesquiterpene
27	33.37	0.16%	beta-Selinene	1487.57	Sesquiterpene
28	33.61	1.10%	Viridiflorene	1494.14	Sesquiterpene
29	34.16	0.13%	gamma-Cadinene	1515.29	Sesquiterpene
30	34.40	0.18%	delta-Cadinene	1524.14	Sesquiterpene
31	35.48	7.17%	(E)-Nerolidol	1567.00	Sesquiterpenol
32	35.84	0.16%	Palustrol	1581.50	Sesquiterpenol
33	36.31	0.25%	Caryophyllene oxide	1594.86	Sesquiterpene Ether
34	36.59	5.88%	Viridiflorol	1596.00	Sesquiterpenol
35	36.90	0.57%	Ledol	1623.00	Sesquiterpenol

ESSENTIAL VALIDATION SERVICES | 747 SW 2<sup>ND</sup> AVE GAINESVILLE, FLORIDA 32601 | 317-361-5044

