



316 Old Hickory Blvd East, Madison, TN 37115

tel (615)612-4270 fax (615)860-9171

sold@naturesgift.com

Balancing Body, Mind and Spirit with Pure Essential Oils

Since 1995

www.naturesgift.com

## Cypress Cupressus sempervirens

Batch No. FR-59026

France

### Monoterpenes 72.61%

α pinene	42.11
δ-3 carene	16.29
limonene	3.05
myrcene	2.27
iso terpinolene	2.10
sabinene	1.99
β pinene	0.93
ortho-cymene	0.86
γ terpinene	0.73
α-fenchene	0.60
α-thujene	0.59
α terpinene	0.39
tricyclene	0.16
camphene	0.15
para cymenene	0.08
(Z) β ocimene	0.07
para cymene	0.05
α phellandrene	0.05
bornylene	0.04
thuja-2, 4(10)-diene	0.04
(E) β ocimene	0.03
cyclofenchene	0.01
1,3,8-para-menthatriene	0.01
alloocimene	0.01

### Aldehydes 0.07%

(E) isocitral	0.04
β cyclocitral	0.02
α-campholenal	0.01

### Esters 7.98%

α-terpenyl acetate	6.25
terpinen-4-yl acetate	0.97
δ terpinyl acetate	0.46
bornyl acetate	0.17
linalyl acetate	0.12
manool oxide	0.01

### Monoterpenols 6.81%

terpinen-4-ol	2.91
linalol	2.20
α terpineol	1.01
para-cymen-8-ol	0.21
cis-linalool oxide (5)	0.11
para-Menth-1,5-dien-8-ol	0.10
isoborneol	0.08
trans-pinocarveol	0.06
cis-para-menth-2-en-1-ol	0.04
trans-carveol	0.03
fenchol	0.02
carvacrol	0.02
hotrienol	0.01
neryl acetate	0.01

### Ethers 0.08%

caryophyllene oxide	0.04
cis-limonene oxide	0.02
1,8-cineole	0.01
α pinene oxide	0.01

### Ketones 1.47%

karahanaenone	1.22
camphor	0.24
carvone	0.01

### Phenols 0.09%

methyl carvacrol	0.07
toluene	0.02

### Sesquiterpenes 6.12%

germacrene d	1.32
β cedrene	1.19
δ cadinene	0.67
β caryophyllene	0.42
α alaskene	0.33
α humulene	0.32
γ muurolene	0.27
α muurolene	0.25
cis-muurola-4(14),5-diene	0.19
α copaene	0.18
γ cadinene	0.12
β copaene	0.10
β bourbonene	0.07
trans-cadina-1(6),4-diene	0.07
γ amorphine	0.07
β alaskene	0.05
trans-calamenene	0.05
trans-cadina-1,4-diene	0.05
himachala-2,4-diene	0.04
thujopsene	0.04
1-epi-bicyclosquiphellandrene	0.04
α cadinene	0.03
β elemene	0.03
β cubebene	0.03
α acoradiene	0.03
trans-muurola-3,5-diene	0.02
α ylangene	0.02
sesquithujene	0.02
aromadendrene	0.02
β cadinene	0.02
cuparene	0.02
α calacorene	0.02
longifolene	0.01
β selinene	0.01

### Sesquiterpenols 2.47%



cedrol	2.27
1-epi-cubenol	0.04
α acorenol	0.04
α cadinol	0.04
allo-cedrol	0.03
cubenol	0.03
germacrene D-4-ol	0.02

Raw Material: Cypress

INCI Name: Cupressus sempervirens

Production Method: Steam Dist., Leaves, cones

Date of Analysis: 2/21/2020

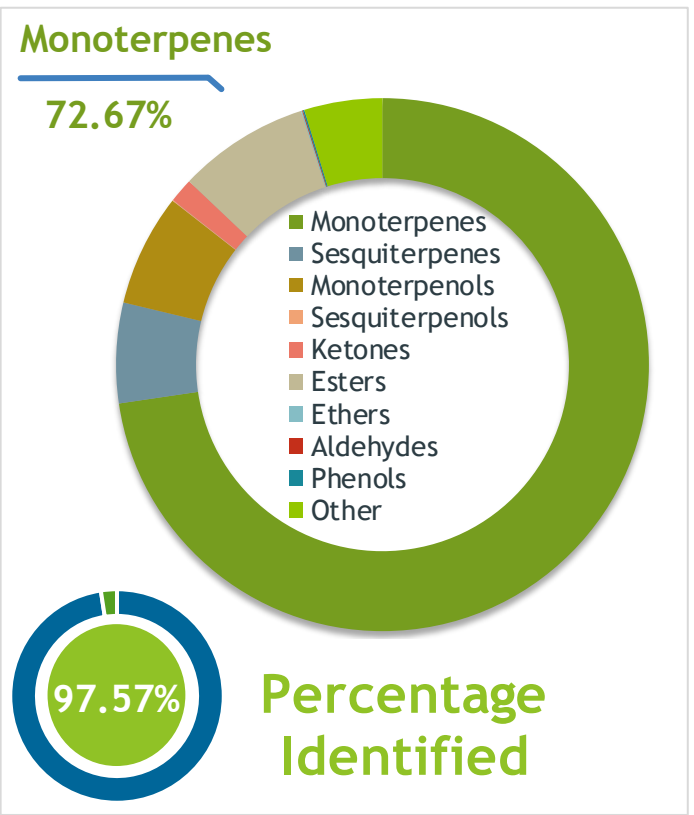
**Client**  **Source** 

*Cypress (Cupressus sempervirens)*  
FR-59026

**Sample** Cypress (Cupressus sempervirens)  
Batch #:..... FR-59026  
Type:..... Essential Oil  
CAS Number:... 8013-86-3  
**Nature's Gift**

**Client**  **Website** 

**Primary**  
42.11% | alpha-Pinene  
16.29% | delta-3-Carene  
6.25% | alpha-Terpinyl acetate



**Result** 

**Conclusion** No adulterants, Diluents, or contaminants were detected via this method. This oil meets the expected profile for genuine Essential Oil of Cypress (Cupressus sempervirens)  
Internal Number: | EVS-3619

  
**Essential Validation Services**  
747 SW 2nd Ave IMB 12 Suite 306  
Gainesville, FL 32601  
317.361.5044 | <https://essentialvalidationservices.com/>  
adam@essentialvalidationservices.com  


Monoterpenes	72.67%	72.67%
Sesquiterpenes	6	6.08%
Monoterpenols	6	6.80%
Sesquiterpenols		0.05%
Ketones		1.47%
Esters	7	7.98%
Ethers		0.07%
Aldehydes		0.05%
Phenols		0.09%
Other	4	4.74%

ESSENTIAL VALIDATION SERVICES | 747 SW 2<sup>ND</sup> AVE GAINESVILLE, FLORIDA 32601 | 317-361-5044

- Essential Oil testing is performed by using qualitative GC-MS. Method: SOP.T.01 Client Method  
- This report may not be published without the consent of Essential Validation Services.  
- Chromatograph image may be requested  
- This report is valid for 1 year from the analyzed date

Client



Source

Cypress (*Cupressus sempervirens*)

FR-59026

Total Percentage		97.57%		
Number	RT	Area %	Compound Name	Chemical Family
1	3.83	0.02%	Toluene	Simple Phenolic
2	6.87	0.01%	Cyclofenchene	Monoterpene
3	7.65	0.04%	Bornylene	Monoterpene
4	8.30	0.16%	Tricyclene	Monoterpene
5	8.47	0.59%	alpha-Thujene	Monoterpene
6	8.79	42.11%	alpha-Pinene	Monoterpene
7	9.30	0.60%	alpha-Fenchene	Monoterpene
8	9.36	0.15%	Camphene	Monoterpene
9	9.53	0.04%	Thuja-2,4(10)-diene	Monoterpene
10	10.33	1.99%	Sabinene	Monoterpene
11	10.50	0.93%	beta-Pinene	Monoterpene
12	11.09	2.27%	Myrcene	Monoterpene
13	11.76	0.05%	alpha-Phellandrene	Monoterpene
14	11.91	16.29%	delta-3-Carene	Monoterpene
15	12.24	0.39%	alpha-Terpinene	Monoterpene
16	12.36	0.05%	para-Cymene	Monoterpene
17	12.57	0.86%	ortho-Cymene	Monoterpene
18	12.79	3.05%	Limonene	Monoterpene
19	13.16	0.07%	(Z)-beta-Ocimene	Monoterpene
20	13.63	0.03%	(E)-beta-Ocimene	Monoterpene
21	14.11	0.73%	gamma-Terpinene	Monoterpene
22	14.66	0.11%	cis-Linalool oxide (5) (furanoid)	Monoterpenol
23	15.37	2.10%	Isoterpinolene	Monoterpene
24	15.56	0.08%	para-Cymenene	Monoterpene
25	15.92	0.01%	alpha-Pinene oxide	Monoterpene Ether
26	16.07	2.20%	Linalool	Monoterpenol
27	16.22	0.01%	Hotrienol	Monoterpenol
28	16.60	0.01%	1,3,8-para-Menthatriene	Monoterpene
29	16.87	0.02%	Fenchol	Monoterpenol
30	17.13	0.04%	cis-para-Menth-2-en-1-ol	Monoterpenol
31	17.23	0.01%	alpha-Campholene aldehyde	Monoterpene Aldehyde
32	17.39	0.01%	Alloocimene	Monoterpene
33	17.51	0.02%	cis-Limonene oxide	Monoterpene Ether
34	17.84	0.06%	trans-Pinocarveol	Monoterpenol
35	18.10	0.24%	Camphor	Monoterpene Ketone

ESSENTIAL VALIDATION SERVICES | 747 SW 2<sup>ND</sup> AVE GAINESVILLE, FLORIDA 32601 | 317-361-5044

- Essential Oil testing is performed by using qualitative GC-MS. Method: SOP.T.01 Client Method  
 - This report may not be published without the consent of Essential Validation Services.  
 - Chromatograph image may be requested  
 - This report is valid for 1 year from the analyzed date

Client



Source

Cypress (*Cupressus sempervirens*)

FR-59026

Number	RT	Area %	Compound Name	Chemical Family
36	18.561	1.22%	Karahanaenone	Monoterpene Ketone
37	18.91	0.10%	para-Mentha-1,5-dien-8-ol	Monoterpenol
38	19.31	0.08%	Isoborneol	Monoterpenol
39	19.52	0.04%	(E)-Isocitral	Monoterpene Aldehyde
40	19.75	2.91%	Terpinen-4-ol	Monoterpenol
41	20.04	0.21%	para-Cymen-8-ol	Monoterpenol
42	20.41	1.01%	alpha-Terpineol	Monoterpenol
43	21.52	0.03%	trans-Carveol	Monoterpenol
44	22.33	0.02%	beta-Cyclocitral	Monoterpene
45	22.46	0.07%	Methyl carvacrol	Phenylpropanoid
46	22.61	0.01%	Carvone	Monoterpene Ketone
47	23.01	0.12%	Linalyl acetate	Monoterpene Ester
48	24.47	0.17%	Bornyl acetate	Monoterpene Ester
49	24.95	0.97%	Terpinen-4-yl acetate	Monoterpene Ester
50	25.19	0.02%	Carvacrol	Monoterpenol
51	26.68	0.46%	delta-Terpinyl acetate	Monoterpene Ester
52	27.26	6.25%	alpha-Terpinyl acetate	Monoterpene Ester
53	27.81	0.01%	Neryl acetate	Monoterpene Ester
54	28.20	0.02%	alpha-Ylangene	Sesquiterpene
55	28.47	0.18%	alpha-Copaene	Sesquiterpene
56	28.79	0.07%	beta-Bourbonene	Sesquiterpene
57	29.01	0.03%	beta-Cubebene	Sesquiterpene
58	29.08	0.03%	beta-Elemene	Sesquiterpene
59	29.69	0.02%	Sesquithujene	Sesquiterpene
60	29.82	0.01%	Longifolene	Sesquiterpene
61	30.09	1.19%	beta-Cedrene	Sesquiterpene
62	30.27	0.42%	beta-Caryophyllene	Sesquiterpene
63	30.57	0.04%	Himachala-2,4-diene	Sesquiterpene
64	30.72	0.10%	beta-Copaene	Sesquiterpene
65	30.89	0.04%	Thujopsene	Sesquiterpene
66	31.51	0.02%	trans-Muurola-3,5-diene	Sesquiterpene
67	31.58	0.02%	Aromadendrene	Sesquiterpene
68	31.75	0.32%	alpha-Humulene	Sesquiterpene
69	32.04	0.19%	cis-Muurola-4(14),5-diene	Sesquiterpene
70	32.11	0.03%	alpha-Acoradiene	Sesquiterpene
71	32.48	0.07%	trans-Cadina-1(6),4-diene	Sesquiterpene

ESSENTIAL VALIDATION SERVICES | 747 SW 2<sup>ND</sup> AVE GAINESVILLE, FLORIDA 32601 | 317-361-5044

- Essential Oil testing is performed by using qualitative GC-MS. Method: SOP.T.01 Client Method  
 - This report may not be published without the consent of Essential Validation Services.  
 - Chromatograph image may be requested  
 - This report is valid for 1 year from the analyzed date

Client



Source



Cypress (*Cupressus sempervirens*)

72	32.61	0.27%	gamma-Muurolene	Sesquiterpene
73	32.82	1.32%	Germacrene D	Sesquiterpene
74	33.12	0.01%	beta-Selinene	Sesquiterpene
75	33.24	0.04%	1-epi-Bicyclosesquiphellandrene	Monoterpene
76	33.31	0.07%	gamma-Amorphene	Sesquiterpene
77	33.41	0.05%	beta-Alaskene	Sesquiterpene
78	33.58	0.25%	alpha-Muurolene	Sesquiterpene
79	33.75	0.02%	beta-Cadinene	Sesquiterpene
80	33.89	0.02%	Cuparene	Sesquiterpene
81	34.06	0.33%	alpha-Alaskene	Sesquiterpene
82	34.12	0.12%	gamma-Cadinene	Sesquiterpene
83	34.37	0.67%	delta-Cadinene	Sesquiterpene
84	34.45	0.05%	trans-Calamenene	Sesquiterpene
85	34.90	0.05%	trans-Cadina-1,4-diene	Sesquiterpene
86	35.06	0.03%	alpha-Cadinene	Sesquiterpene
87	35.19	0.02%	alpha-Calacorene	Sesquiterpene
88	36.54	0.02%	Germacrene D-4-ol	Sesquiterpenol
89	36.74	0.04%	Caryophyllene oxide	Sesquiterpene Ether
90	37.25	0.03%	allo-Cedrol	Sesquiterpenol
91	37.74	2.27%	Cedrol	Sesquiterpenol
92	38.54	0.04%	1-epi-Cubenol	Sesquiterpenol
93	38.69	0.04%	alpha-Acorenol	Sesquiterpenol
94	39.24	0.03%	Cubenol	Sesquiterpenol
95	39.55	0.04%	alpha-Cadinol	Sesquiterpenol
96	51.01	0.01%	Manool oxide	Diterpene Ester

ESSENTIAL VALIDATION SERVICES | 747 SW 2<sup>ND</sup> AVE GAINESVILLE, FLORIDA 32601 | 317-361-5044