



316 Old Hickory Blvd East, Madison, TN 37115

tel (615)612-4270 fax (615)860-9171

sold@naturesgift.com

Balancing Body, Mind and Spirit with Pure Essential Oils

Since 1995

www.naturesgift.com

Copaiba Balsam

Copaifera officinalis

Steam Distilled from Resin, Brazil

Batch #BR-59030

Sesquiterpenes	97.01%	Monoterpenes	0.13%
β caryophyllene	59.86	(Z) β ocimene	0.09
α humulene	8.80	alloocimene	0.04
trans α bergamotene	8.37		
α copaene	3.77	Monoterpenols	0.3%
γ elemene	3.37	carophyllenyl alcohol	0.30
germacrene d	2.17		
β elemene	1.82	Sesquiterpenols	0.57%
γ muurolene	1.36	viridiflorol	0.02
δ cadinene	1.27	globulol	0.05
β bisabolene	1.24	junenol	0.08
γ cadinene	0.58	1,10-d-epi cubenol	0.03
α cubebene	0.49	τ muurolol	0.11
δ elemene	0.49	α muurolol	0.15
bicyclgermacrene	0.40	α cadinol	0.11
α muurolene	0.38	β bisabolol	0.01
β sesquiphellandrene	0.38	α bisabolol	0.01
(Z) β farnesene	0.37		
alloaromadendrene	0.34	Esters	0.03%
β selinene	0.27	(Z) sesquisabinene hydrate	0.03
cyperene	0.23		
(E) α bisabolene	0.23	Ethers / Oxides	0.34%
epi β santalene	0.18	caryophellene oxide	0.30
(Z) α bisabolene	0.11	humulene epoxide II	0.04
β copaene	0.10		
γ gurjunene	0.10	Ketones	0.03%
germacrene B	0.09	Junipercamphor	0.03
trans cadina-1(6),4-diene	0.08		
aromadendrene	0.06		
(E) γ bisabolene	0.06		
α gurjunene	0.02		
α Ylangene	0.02		



Raw Material: resin

INCI Name: COPAIFERA SPECIES RESIN OILS

Production Method: Steam distillation

Date analyzed: 3/10/2020

Cobaiba Balsam (*Copaifera officinalis*)
BR-59030

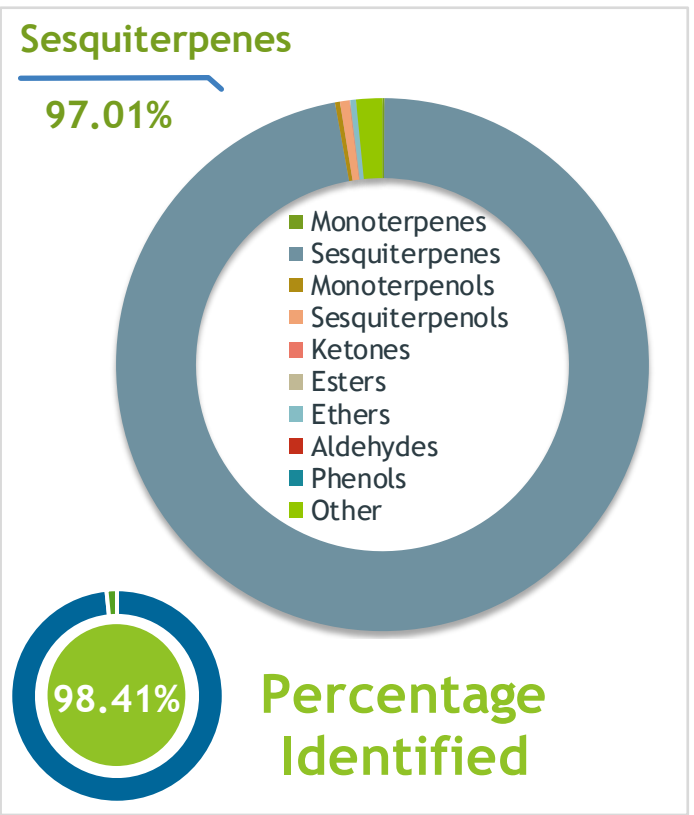
Client  **Source** 

Sample **Cobaiba Balsam (*Copaifera officinalis*)**
 Batch #:..... BR-59030
 Type:..... Essential Oil
 CAS Number:.....
Nature's Gift

Client  **Website** 

Primary

59.86%	<u>beta-Caryophyllene</u>
8.80%	<u>alpha-Humulene</u>
8.37%	<u>trans-alpha-Bergamotene</u>



Result 

Conclusion No adulterants, diluents, or contaminants were detected via this method. This oil meets the expected profile for genuine Essential Oil of Cobaiba Balsam (*Copaifera officinalis*)

Internal Number: | EVS-3633


Essential Validation Services
 747 SW 2nd Ave IMB 12 Suite 306
 Gainesville, FL 32601
 317.361.5044 | <https://essentialvalidationservices.com/>
 adam@essentialvalidationservices.com


Monoterpenes	0.13%
Sesquiterpenes	97.01%
Monoterpenols	0.30%
Sesquiterpenols	0.57%
Ketones	0.03%
Esters	0.03%
Ethers	0.34%
Aldehydes	0.00%
Phenols	0.00%
Other	1.59%

ESSENTIAL VALIDATION SERVICES | 747 SW 2ND AVE GAINESVILLE, FLORIDA 32601 | 317-361-5044

Client



Source

*Cobaiba Balsam (Copaifera officinalis)*

BR-59030

Total Percentage		98.41%		
Number	RT	Area %	Compound Name	Chemical Family
1	13.11	0.09%	(Z)-beta-Ocimene	Monoterpene
2	17.34	0.04%	Alloocimene	Monoterpene
3	26.70	0.49%	delta-Elemene	Sesquiterpene
4	27.21	0.49%	alpha-Cubebene	Sesquiterpene
5	28.14	0.02%	alpha-Ylangene	Sesquiterpene
6	28.43	3.77%	alpha-Copaene	Sesquiterpene
7	29.04	1.82%	beta-Elemene	Sesquiterpene
8	29.52	0.23%	Cyperene	Sesquiterpene
9	29.75	0.02%	alpha-Gurjunene	Sesquiterpene
10	30.40	59.86%	beta-Caryophyllene	Sesquiterpene
11	30.73	3.37%	gamma-Elemene	Sesquiterpene
12	30.92	8.37%	trans-alpha-Bergamotene	Sesquiterpene
13	31.02	0.06%	Aromadendrene	Sesquiterpene
14	31.20	0.37%	(Z)-beta-Farnesene	Sesquiterpene
15	31.45	0.18%	epi-beta-Santalene	Sesquiterpene
16	31.54	0.10%	beta-Copaene	Sesquiterpene
17	31.75	8.80%	alpha-Humulene	Sesquiterpene
18	31.90	0.34%	allo-Aromadendrene	Sesquiterpene
19	32.18	0.10%	gamma-Gurjunene	Sesquiterpene
20	32.44	0.08%	trans-Cadina-1(6),4-diene	Sesquiterpene
21	32.56	1.36%	gamma-Muurolene	Sesquiterpene
22	32.77	2.17%	Germacrene D	Sesquiterpene
23	33.07	0.27%	beta-Selinene	Sesquiterpene
24	33.37	0.40%	Bicyclogermacrene	Sesquiterpene
25	33.53	0.38%	alpha-Muurolene	Sesquiterpene
26	33.67	0.11%	cis-alpha-Bisabolene	Sesquiterpene
27	33.94	1.24%	beta-Bisabolene	Sesquiterpene
28	34.05	0.58%	gamma-Cadinene	Sesquiterpene
29	34.32	1.27%	delta-Cadinene	Sesquiterpene
30	34.55	0.38%	beta-Sesquiphellandrene	Sesquiterpene
31	34.67	0.06%	trans-gamma-Bisabolene	Sesquiterpene
32	35.22	0.23%	trans-alpha-Bisabolene	Sesquiterpene
33	35.51	0.03%	cis-Sesquisabinene hydrate	Monoterpene Ester
34	35.81	0.09%	Germacrene B	Sesquiterpene
35	36.43	0.30%	Caryophyllenyl alcohol	Monoterpenol

ESSENTIAL VALIDATION SERVICES | 747 SW 2ND AVE GAINESVILLE, FLORIDA 32601 | 317-361-5044

- Essential Oil testing is performed by using qualitative GC-MS. Method: SOP.T.01 Client Method
 - This report may not be published without the consent of Essential Validation Services.
 - Chromatograph image may be requested
 - This report is valid for 1 year from the analyzed date

Client



Source



Cobaiba Balsam (*Copaifera officinalis*)
BR-59030

Number	RT	Area %	Compound Name	Chemical Family
36	36.685	0.30%	Caryophyllene oxide	Monoterpenol
37	37.17	0.02%	Viridiflorol	Sesquiterpenol
38	37.57	0.05%	Globulol	Sesquiterpenol
39	37.75	0.04%	Humulene epoxide II	Sesquiterpene Ether
40	38.21	0.08%	Junenol	Sesquiterpenol
41	38.48	0.03%	1,10-di-epi-Cubenol	Sesquiterpenol
42	39.07	0.11%	T-Muurolol	Sesquiterpenol
43	39.18	0.15%	alpha-Muurolol	Sesquiterpenol
44	39.50	0.11%	alpha-Cadinol	Sesquiterpenol
45	40.15	0.01%	beta-Bisabolol	Sesquiterpenol
46	40.75	0.01%	alpha-Bisabolol	Sesquiterpenol
47	41.01	0.03%	Junipercamphor	Sesquiterpene Ketone

ESSENTIAL VALIDATION SERVICES | 747 SW 2ND AVE GAINESVILLE, FLORIDA 32601 | 317-361-5044

- Essential Oil testing is performed by using qualitative GC-MS. Method: SOP.T.01 Client Method
- This report may not be published without the consent of Essential Validation Services.
- Chromatograph image may be requested
- This report is valid for 1 year from the analyzed date

