



Sample:

Client: | Nature's Gift
 Sample: | Roman Chamomile (Anthemis nobilis)
 Batch # | IT-0018808
 CAS Number | 8015-92-7
 Type: | Essential Oil

Conclusion:

- No adulterants, diluents, or contaminants were detected via this method.



X *Adam Christen*

Validated By:

Essential Validation Services
 747 SW 2nd Ave, Gainesville, FL 32601

Phone: 317-361-5044 E-mail: Adam@essentialvalidationservices.com

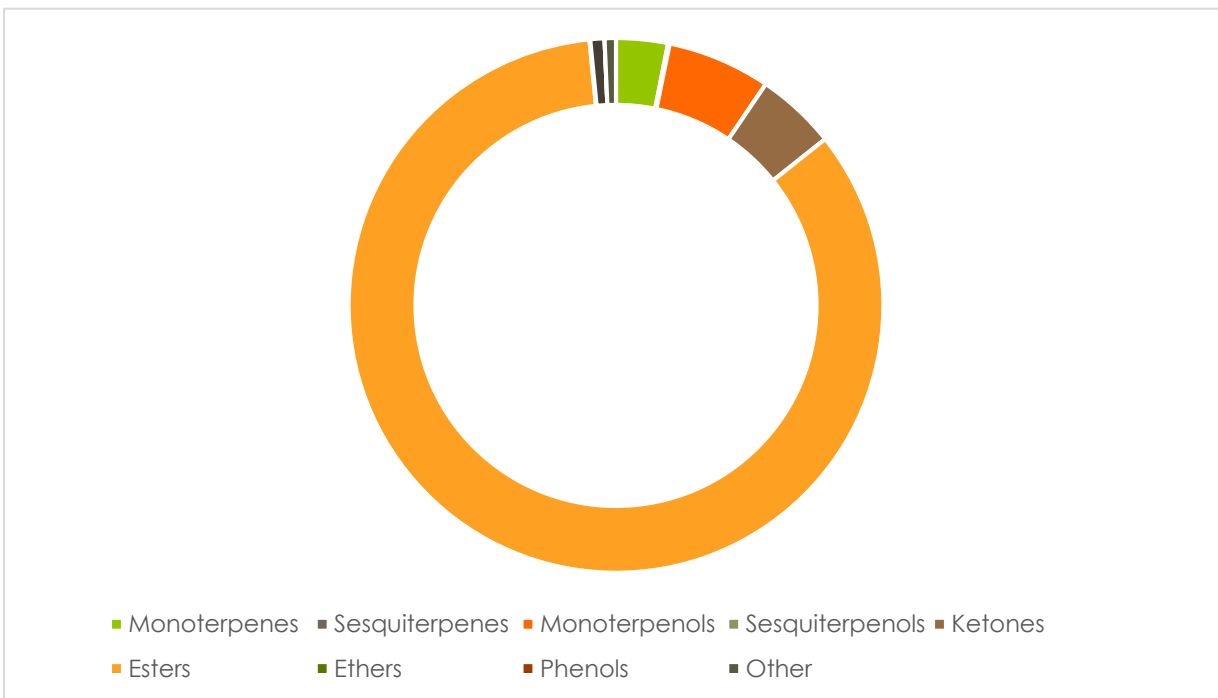
Summary of Analyses

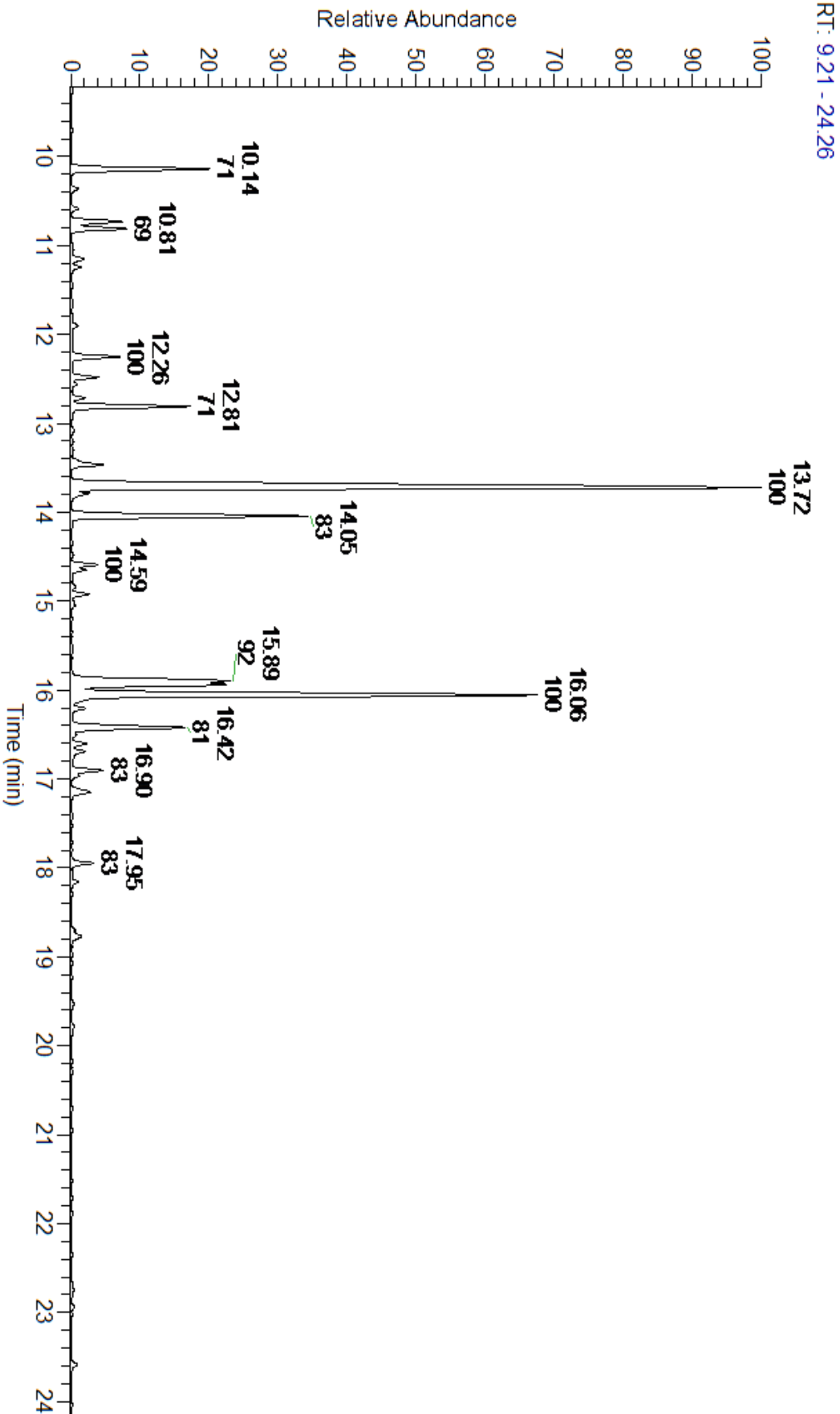
A fresh sample of Roman Chamomile (Anthemis nobilis) Essential Oil (10 uL in .5to.5 mL Hexane + ETOH) was prepared and analyzed via split injection GC/EI-MS.

Roman Chamomile (Anthemis nobilis)

Main Compounds	Percentages
Isobutyl angelate	30.97%
Isoamyl angelate	18.10%
Methallyl angelate	8.05%
trans-Pinocarveol	6.05%
Butanoic Acid Ester	4.87%
Isobutyl isobutyrate	4.77%
Pinocarpone	4.33%
2-Methylbutyl isobutyrate	3.92%
alpha-Pinene	1.84%
Isobutyl methacrylate	1.82%
Methallyl isobutyrate	1.64%
Isoamyl methacrylate	1.21%
Isobutyl 3-hydroxy-2- me	1.07%

Monoterpenes	Sesquiterpenes	Monoterpenols	Sesquiterpenols	Ketones
3.11%	0.10%	6.21%	0.00%	4.81%
Esters	Ethers	Aldehydes	Phenols	Other
83.65%	0.05%	0.85%	0.00%	0.68%





ESSENTIAL VALIDATION SERVICES | 747 SW 2ND AVE GAINESVILLE, FLORIDA 32601 | 317-361-5044

Total Percentage		99.46%			
Peak Number	RT	Area %	Compound Name	RI	Chemical Family
1	5.52	0.08%	2-Methylbutanol	727.00	Aliphatic Alcohol
2	8.57	0.07%	Isopropyl butyrate	842.00	Aliphatic Ester
3	9.12	0.06%	Isoamyl acetate	881.25	Aliphatic Ester
4	9.19	0.13%	2-Methylbutyl acetate	882.50	Aliphatic Ester
5	10.14	4.77%	Isobutyl isobutyrate	921.00	Aliphatic Ester
6	10.37	0.23%	Tricyclene	923.20	Monoterpene
7	10.58	0.24%	alpha-Thujene	927.80	Monoterpene
8	10.73	1.84%	alpha-Pinene	936.10	Monoterpene
9	10.81	1.82%	Isobutyl methacrylate	939.00	Aliphatic Ester
10	11.06	0.09%	Propyl 2-methylbutyrate	950.00	Aliphatic Ester
11	11.15	0.47%	Camphene	950.30	Monoterpene
12	11.25	0.30%	Isobutyl butyrate	963.00	Aliphatic Ester
13	11.90	0.21%	beta-Pinene	977.70	Monoterpene
14	12.26	1.64%	Methallyl isobutyrate	986.00	Aliphatic Ester
15	12.48	0.89%	Isobutyl 2-methylbutyrate	999.90	Aliphatic Ester
16	12.56	0.19%	isobutyl isovalerate	1002.80	Aliphatic Ester
17	12.71	0.42%	Isoamyl isobutyrate	1013.00	Aliphatic Ester
18	12.81	3.92%	2-Methylbutyl isobutyrate	1014.50	Aliphatic Ester
19	13.08	0.08%	para-Cymene	1024.30	Monoterpene
20	13.20	0.04%	Limonene	1029.50	Monoterpene
21	13.20	Co-Eluting	beta-Phellandrene	1030.00	Monoterpene
22	13.30	0.05%	1,8-Cineole	1031.80	Monoterpene Ether
23	13.46	1.21%	Isoamyl methacrylate	1046.00	Aliphatic Ester
24	13.72	30.97%	Isobutyl angelate	1059.00	Aliphatic Ester
25	13.79	0.55%	Prenyl isobutyrate	1061.00	Aliphatic Ester
26	14.05	8.05%	Methallyl angelate	1065.50	Aliphatic Ester
27	14.48	0.05%	3-Methylamyl propionate	1084.00	Aliphatic Ester
28	14.59	0.84%	Butyl angelate	1092.00	Aliphatic Ester
29	14.65	0.46%	Isobutyl tiglate	1092.30	Aliphatic Ester
30	14.84	0.14%	Isopentyl 2-methylbutyrate	1097.00	Aliphatic Ester
31	14.92	0.56%	2-Methylbutyl 2-methylbutyrate	1102.10	Monoterpene Ester
32	15.05	0.17%	Methallyl tiglate	1109.00	Aliphatic Ester
33	15.89	6.05%	trans-Pinocarveol	1144.10	Monoterpene
34	15.94	4.87%	Butanoic Acid Ester	1144.50	Aliphatic Ester
35	16.06	18.10%	Isoamyl angelate	1153.00	Aliphatic Ester
36	16.21	0.48%	2-Methylbutyl angelate	1159.50	Aliphatic Ester
37	16.42	4.33%	Pinocarvone	1161.43	Monoterpene Ketone
38	16.50	0.16%	Borneol	1168.71	Monoterpene
39	16.60	0.49%	UK Ester	#N/A	#N/A
40	16.69	0.48%	Isopinocampone	1173.00	Monoterpene Ketone
41	16.76	0.07%	Hexyl butyrate	1185.50	Aliphatic Ester
42	16.90	1.07%	Isobutyl 3-hydroxy-2-methylene bu	1187.50	Monoterpene Ester



43	16.97	0.21%	Isoamyl tiglate	1188.50	Aliphatic Ester
44	17.15	0.85%	Myrtenal	1200.43	Monoterpene Aldehyde
45	17.95	0.72%	trans-Hex-2-en-1-ylisovalerate	1240.00	Aliphatic Ester
46	18.16	0.24%	3-Methylamyl angelate	1255.00	Aliphatic Ester
47	18.70	0.09%	(Z)-Hex-3-en-1-yl angelate	1280.00	Aliphatic Ester
48	18.77	0.50%	Isoamyl 3-hydroxy-2-methylene but	1282.50	Monoterpene Ester
49	19.78	0.11%	UK	#N/A	#N/A
50	22.94	0.10%	beta-Selinene	1487.57	Sesquiterpene

ESSENTIAL VALIDATION SERVICES | 747 SW 2ND AVE GAINESVILLE, FLORIDA 32601 | 317-361-5044