



English Chamomile

Anthemis Nobile

Batch No. UK-58800

Ethically farmed, Great Britain

Monoterpenes 6.06%

α pinene	4.38
camphene	0.59
β pinene	0.45
limonene	0.36
para cymene	0.21
sabinene	0.07

Monoterpenols 4.01%

trans-pinocarveol	3.10
myrtenol	0.53
borneol	0.29
trans-carveol	0.05
1-nonen-3-ol	0.04

Ketones 5.45%

pinocarvone	4.09
3-methyl cyclohexanone	1.01
isopinocampone	0.22
phytone	0.07
2,4-Dimethyl-3-pentanone	0.04
6-Methyl-5-hepten-2-one	0.02

Ethers 0.06%

1,8-cineole	0.06
-------------	------

Esters 77.3%

3-methylamyl angelate	14.43
isobutyl angelate	13.61
methallyl angelate	9.96
2-methylbutyl angelate	9.70
3-methylamyl methacrylate	6.05
isoamyl angelate	5.68
2-methylbutyl isobutyrate	2.24
isobutyl isobutyrate	2.23
3-methylamyl isobutyrate	1.83
isobutyl methacrylate	1.71
isobutyl-2-methylbutyrate	1.42
isoamyl methacrylate	1.37
2-methylbutyl 2-methylbutyrate	1.10
2-methylbutyl methacrylate	0.98
3-methylamyl valerate	0.98
prenyl angelate	0.74
isoamyl isobutyrate	0.52
isobutyl butyrate	0.52
butyl angelate	0.51
isopentyl 2-methylbutyrate	0.31
prenyl isobutyrate	0.30
3-methylamyl propionate	0.19
prenyl acetate	0.14
isobutyl tiglate	0.14
isoamyl acetate	0.12
2-methyl butyl isovalerate	0.09
(Z)-3-hexenyl angelate	0.08
2-methylbutyl acetate	0.08
propyl isobutyrate	0.08
propyl 2-methylbutyrate	0.07
ethyl angelate	0.06
isoamyl propionate	0.03
trans-sabinyl acetate	0.03

Sesquiterpenes 1.01%

germacrene D	0.45
(E) β farnesene	0.21
(E,E) α farnesene	0.09
β caryophyllene	0.08
β selinene	0.06
α copaene	0.06
longicyclene	0.03
δ cadinene	0.02
β copaene	0.01

Aldehydes 1.05%

myrtenal	0.63
α camphene aldehyde	0.16
hexanal	0.08
decanal	0.06
2-heptenal	0.03
(E)-2-Hexenal	0.02
benzaldehyde	0.02
(E,E)-2,4-Decadienal	0.02
(E)-2-Decenal	0.01
(E)-2-Undecenal	0.01
pentadecanal	0.01

Other 0.53%

3-Methylpentanol	0.23
1-Octen-3-ol	0.12
2-Pentylfuran	0.09
(E) β ocimene	0.03
1-Hexanol	0.02
1-octene	0.01
(E)-2-Hexenol	0.01
tricosane	0.01
pentacosane	0.01

Raw Material: English Chamomile

INCI Name: Chamaemelum nobile, Anthemis nobilis

Production Method: Steam Dist., flowers

Date of Analysis: January 2, 2020

Chamomile (*Anthemis nobilis*)
UK-58800, UK-Anthemis

Client



Source



Sample

Chamomile (*Anthemis nobilis*)
 Batch #:..... UK-58800, UK-Anthemis
 Type:..... Essential Oil
 CAS Number:... 8015-92-7
Nature's Gift

Client

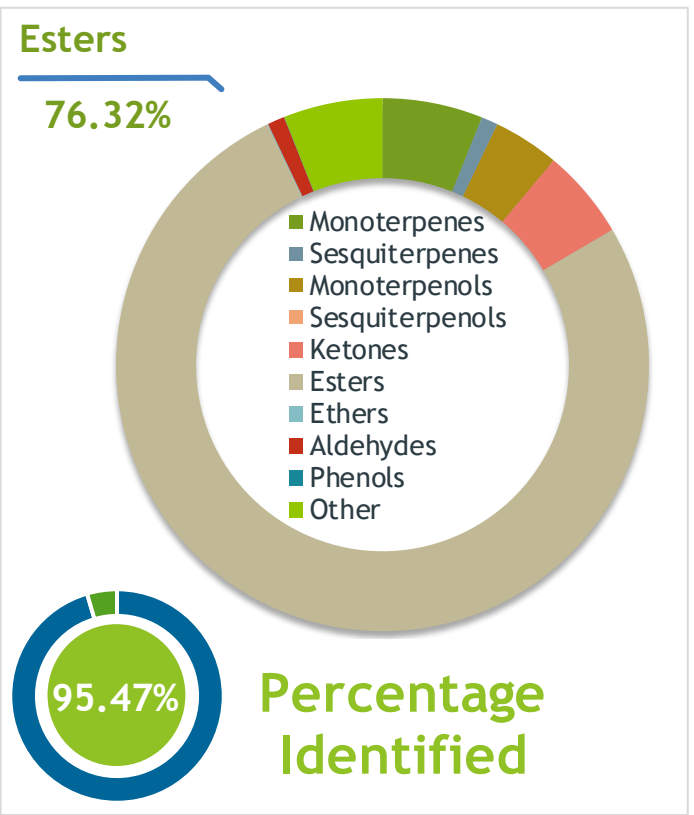


Website



Primary

14.43% | 3-Methylamyl angelate
13.61% | Isobutyl angelate
9.96% | Methallyl angelate



Result



Conclusion

No adulterants, Diluents, or contaminants were detected via this method. This oil meets the expected profile for genuine Essential Oil of English Camomile (*Anthemis nobilis*)

Internal Number: | EVS-3469



Essential Validation Services

747 SW 2nd Ave IMB 12 Suite 306
Gainesville, FL 32601

317.361.5044 | <https://essentialvalidationservices.com/>
adam@essentialvalidationservices.com



Monoterpenes	6.09%	6.09%
Sesquiterpenes	1.01%	1.01%
Monoterpenols	4.01%	4.01%
Sesquiterpenols	0.00%	0.00%
Ketones	5.45%	5.45%
Esters	76.32%	76.32%
Ethers	0.06%	0.06%
Aldehydes	1.03%	1.03%
Phenols	0.02%	0.02%
Other	6.01%	6.01%

ESSENTIAL VALIDATION SERVICES | 747 SW 2ND AVE GAINESVILLE, FLORIDA 32601 | 317-361-5044

- This report is the digitally signed and will only be considered valid if the signature is intact.
 - This report may not be published without the consent of Essential Validation Services.
 - Chromatograph image may be requested
 - This report is valid for 1 year from the analyzed date

Client



Source

Chamomile (*Anthemis nobilis*)

UK-58800, UK-Anthemis

Total Percentage		95.47%		
Number	RT	Area %	Compound Name	Chemical Family
1	3.90	0.01%	1-Octene	Alkene
2	4.00	0.04%	2,4-Dimethyl-3-pentanone	Aliphatic Ketone
3	4.58	0.08%	Hexanal	Aliphatic Aldehyde
4	5.80	0.23%	3-Methylpentanol	Aliphatic Alcohol
5	6.02	0.02%	(E)-2-Hexenal	Aliphatic Aldehyde
6	6.09	0.08%	Propyl isobutyrate	Aliphatic Ester
7	6.41	0.01%	(E)-2-Hexenol	Aliphatic Alcohol
8	6.53	0.02%	1-Hexanol	Aliphatic Alcohol
9	6.76	0.12%	Isoamyl acetate	Aliphatic Ester
10	6.82	0.08%	2-Methylbutyl acetate	Aliphatic Ester
11	7.41	0.06%	Ethyl angelate	Aliphatic Ester
12	8.09	2.23%	Isobutyl isobutyrate	Aliphatic Ester
13	8.33	0.14%	Prenyl acetate	Aliphatic Ester
14	8.67	0.52%	Isobutyl butyrate	Aliphatic Ester
15	8.78	4.38%	alpha-Pinene	Monoterpene
16	9.02	1.71%	Isobutyl methacrylate	Aliphatic Ester
17	9.30	0.07%	Propyl 2-methylbutyrate	Aliphatic Ester
18	9.41	0.59%	Camphene	Monoterpene
19	9.62	1.01%	3-Methyl cyclohexanone	Aliphatic Ketone
20	9.74	0.03%	2-Heptenal	Aliphatic Aldehyde
21	9.89	0.02%	Benzaldehyde	Simple Phenolic
22	10.30	0.03%	Isoamyl propionate	Aliphatic Ester
23	10.38	0.07%	Sabinene	Monoterpene
24	10.56	0.45%	beta-Pinene	Monoterpene
25	10.75	0.12%	1-Octen-3-ol	Aliphatic Alcohol
26	10.93	0.02%	6-Methyl-5-hepten-2-one	Aliphatic Ketone
27	11.15	0.09%	2-Pentylfuran	Furan
28	11.71	1.42%	Isobutyl 2-methylbutyrate	Aliphatic Ester
29	12.16	0.52%	Isoamyl isobutyrate	Aliphatic Ester
30	12.30	2.24%	2-Methylbutyl isobutyrate	Aliphatic Ester
31	12.63	0.21%	para-Cymene	Monoterpene
32	12.85	0.36%	Limonene	Monoterpene
33	12.96	0.06%	1,8-Cineole	Monoterpene Ether
34	13.41	0.98%	2-Methylbutyl methacrylate	Aliphatic Ester
35	13.46	1.37%	Isoamyl methacrylate	Aliphatic Ester

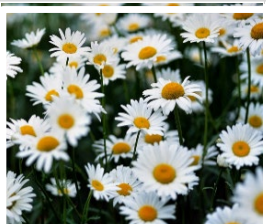
ESSENTIAL VALIDATION SERVICES | 747 SW 2ND AVE GAINESVILLE, FLORIDA 32601 | 317-361-5044

- This report is the digitally signed and will only be considered valid if the signature is intact.
 - This report may not be published without the consent of Essential Validation Services.
 - Chromatograph image may be requested
 - This report is valid for 1 year from the analyzed date

Client



Source



Chamomile (Anthemis nobilis)
UK-58800, UK-Anthemis

Number	RT	Area %	Compound Name	Chemical Family
36	13.692	0.03%	(E)-beta-Ocimene	Aliphatic Ester
37	13.88	13.61%	Isobutyl angelate	Aliphatic Ester
38	14.13	0.30%	Prenyl isobutyrate	Aliphatic Ester
39	14.51	9.96%	Methallyl angelate	Aliphatic Ester
40	14.95	0.19%	3-Methylamyl propionate	Aliphatic Ester
41	15.63	0.51%	Butyl angelate	Aliphatic Ester
42	15.75	0.14%	Isobutyl tiglate	Aliphatic Ester
43	16.16	0.31%	Isopentyl 2-methylbutyrate	Aliphatic Ester
44	16.31	1.10%	2-Methylbutyl 2-methylbutyrate	Aliphatic Ester
45	16.57	0.09%	2-Methyl Butyl Isovalerate	Monoterpene Ester
46	16.72	0.04%	1-Nonen-3-ol	Monoterpenol
47	16.90	1.83%	3-Methylamyl isobutyrate	Aliphatic Ester
48	17.31	0.16%	alpha-Campholene aldehyde	Monoterpene Aldehyde
49	17.95	5.68%	Isoamyl angelate	Aliphatic Ester
50	18.23	3.10%	trans-Pinocarveol	Monoterpenol
51	18.39	6.05%	3-Methylamyl methacrylate	Aliphatic Ester
52	18.58	9.70%	2-Methylbutyl angelate	Aliphatic Ester
53	18.93	4.09%	Pinocarvone	Monoterpene Ketone
54	19.39	0.29%	Borneol	Monoterpenol
55	19.55	0.22%	Isopinocampone	Monoterpene Ketone
56	20.38	0.74%	Prenyl angelate	Aliphatic Ester
57	20.45	0.63%	Myrtenal	Monoterpene Aldehyde
58	20.53	0.53%	Myrtenol	Monoterpenol
59	20.96	0.98%	3-Methylamyl valerate	Aliphatic Ester
60	21.08	0.06%	Decanal	Aliphatic Aldehyde
61	21.60	0.05%	trans-Carveol	Monoterpenol
62	23.17	14.43%	3-Methylamyl angelate	Aliphatic Ester
63	23.60	0.01%	(E)-2-Decenal	Monoterpene Aldehyde
64	24.29	0.08%	(Z)-3-Hexenyl angelate	Aliphatic Ester
65	25.06	0.03%	trans-Sabinyl acetate	Monoterpene Ester
66	26.08	0.02%	(E,E)-2,4-Decadienal	Sesquiterpene Aldehyde
67	28.10	0.01%	(E)-2-Undecenal	Sesquiterpene Aldehyde
68	28.22	0.03%	Longicyclene	Sesquiterpene
69	28.54	0.06%	alpha-Copaene	Sesquiterpene
70	30.35	0.08%	beta-Caryophyllene	Sesquiterpene
71	30.80	0.01%	beta-Copaene	Sesquiterpene

ESSENTIAL VALIDATION SERVICES | 747 SW 2ND AVE GAINESVILLE, FLORIDA 32601 | 317-361-5044

- This report is the digitally signed and will only be considered valid if the signature is intact.
 - This report may not be published without the consent of Essential Validation Services.
 - Chromatograph image may be requested
 - This report is valid for 1 year from the analyzed date

Client



Source



Chamomile (*Anthemis nobilis*)

72	31.87	0.21%	(E)-beta-Farnesene	Sesquiterpene
73	32.89	0.45%	Germacrene D	Sesquiterpene
74	33.20	0.06%	beta-Selinene	Sesquiterpene
75	33.97	0.09%	(E,E)-alpha-Farnesene	Sesquiterpene
76	34.44	0.02%	delta-Cadinene	Sesquiterpene
77	41.96	0.01%	Pentadecanal	Sesquiterpene Aldehyde
78	46.37	0.07%	Phytone	Aliphatic Ketone
79	58.87	0.01%	Tricosane	Alkane
80	60.48	0.01%	Pentacosane	Alkane

ESSENTIAL VALIDATION SERVICES | 747 SW 2ND AVE GAINESVILLE, FLORIDA 32601 | 317-361-5044

- This report is the digitally signed and will only be considered valid if the signature is intact.
- This report may not be published without the consent of Essential Validation Services.
- Chromatograph image may be requested
- This report is valid for 1 year from the analyzed date