



Cape Chamomile Eriocephalus punctulatus

Batch No. SA-58999
 South Africa

Monoterpenes 2.67%

para cymene	1.06
γ terpinene	0.78
α pinene	0.24
camphene	0.18
limonene	0.18
terpinolene	0.17
β pinene	0.06

Monoterpenols 6.19%

terpinen-4-ol	2.62
borneol	1.75
cis-dehydroxy linalool oxide	0.49
trans-sabinene hydrate	0.42
α terpineol	0.31
cis-para-menth-2-en-1-ol	0.20
trans-carveol	0.15
trans-para-menth-2-en-1-ol	0.15
isopulegol	0.10

Ethers 1.09%

trans-dehydroxy linalool oxide	0.46
1,8 cineole	0.27
caryophellene oxide	0.30
humulene epoxide II	0.06

Esters 64.62%

2-methylbutyl isobutyrate	26.28
isobutyl isobutyrate	8.55
2-methylbutyl 2-methylbutyrate	5.92
3-methylpentyl angelate	4.17
isoamyl tiglate	3.80
isoamyl isobutyrate	3.04
isobutyl angelate	1.92
isopentyl 2-methylbutyrate	1.9
isobutyl-2-methylbutyrate	1.84
artedouglasia oxide C	1.60
2-methylbutyl isovalerate	1.18
isobutyl tiglate	1.04
artedouglasia oxide D	0.57
2-pentyl propionate?	0.50
isoamyl methacrylate	0.40
2-methylbutyl acetate	0.36
isoamyl angelate	0.29
geranyl acetate	0.26
heptyl acetate	0.19
neryl acetate	0.18
isobutyl methacrylate	0.17
bomyl acetate	0.14
isoamyl isovalerate	0.12
butyl angelate	0.12
isoamyl acetate	0.03
isoamyl propionate	0.03
propyl isobutyrate	0.02

Ketones 3.62%

Laciniata furanone H	1.43
camphor	1.08
Laciniata furanone E	0.57
Laciniata furanone isomer	0.26
Laciniata furanone G?	0.17
2-hexanone	0.06
pinocarvone	0.05

Phenols 0%

methyl eugenol	0.05
----------------	------

Sesquiterpenes 1.49%

α copaene	0.96
cis-caryophyllene	0.20
bicyclogermacrene	0.13
β selinene	0.10
allo-aromadendrene	0.06
longicyclene	0.04

Sesquiterpenols 1.04%

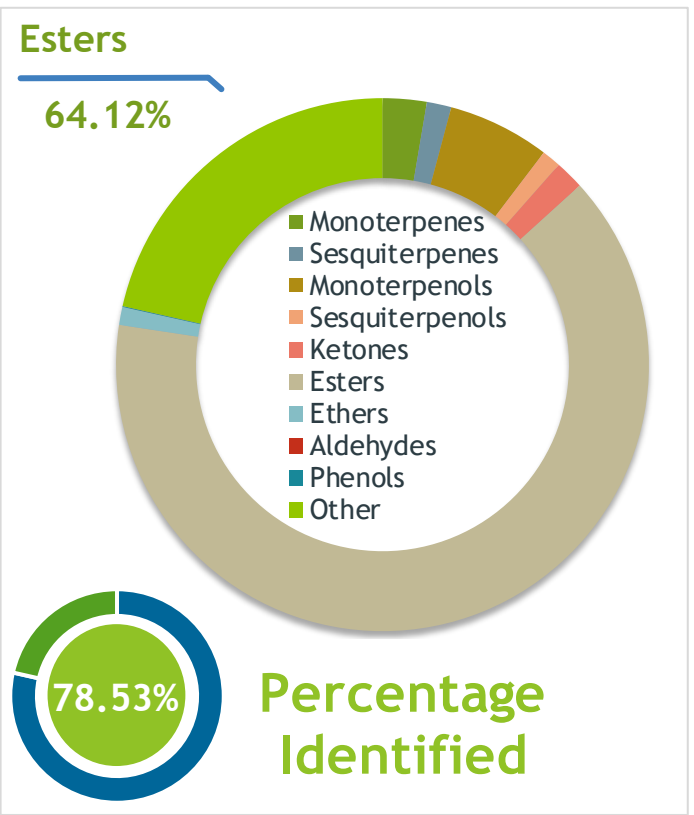
spathulenol	0.53
viridiflorol	0.09
globulol	0.03
β copaen-4-α-ol	0.05
ledol	0.2
τ cadinol	0.14

Raw Material: Cape Chamomile
 Production Method: Steam Dist., flowers
 Date of Analysis: 11/2/2019

Client  **Source** 

Cape Chamomile (Eriocephalus punctulatus)
SA-58999

Sample Cape Chamomile (Eriocephalus punctulatus)
Batch #:..... SA-58999
Type:..... Essential Oil
CAS Number:... 68916-49-4
Nature's Gift



Client  **Website** 

Primary
26.28% | 2-Methylbutyl isobutyrate
8.55% | Isobutyl isobutyrate
6.37% | UK Compound

Result 

Conclusion
No adulterants, Diluents, or contaminants were detected via this method. This oil meets the expected profile for genuine Essential Oil of Cape Chamomile (Eriocephalus punctulatus)
Internal Number: | EVS-3345


Essential Validation Services
747 SW 2nd Ave IMB 12 Suite 306
Gainesville, FL 32601
317.361.5044 |
<https://essentialvalidationservices.com/>
adam@essentialvalidationservices.com

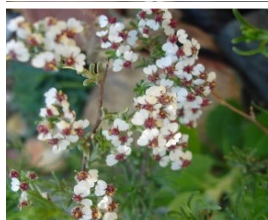

Monoterpenes	2.67%
Sesquiterpenes	1.49%
Monoterpenols	6.19%
Sesquiterpenols	1.16%
Ketones	1.76%
Esters	64.12%
Ethers	1.09%
Aldehydes	0.00%
Phenols	0.05%
Other	21.47%

ESSENTIAL VALIDATION SERVICES | 747 SW 2ND AVE GAINESVILLE, FLORIDA 32601 | 317-361-5044

Client



Source

Cape Chamomile (*Eriocephalus punctulatus*)

SA-58999

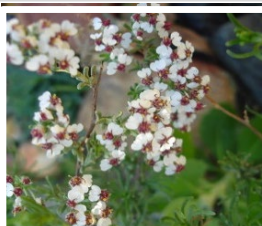
Total Percentage		78.53%		
Number	RT	Area %	Compound Name	Chemical Family
1	4.00	0.06%	2-Hexanone	Aliphatic Ketone
2	6.10	0.02%	Propyl isobutyrate	Aliphatic Ester
3	6.76	0.03%	Isoamyl acetate	Aliphatic Ester
4	6.82	0.36%	2-Methylbutyl acetate	Aliphatic Ester
5	8.10	8.55%	Isobutyl isobutyrate	Aliphatic Ester
6	8.78	0.24%	alpha-Pinene	Monoterpene
7	9.02	0.17%	Isobutyl methacrylate	Aliphatic Ester
8	9.41	0.18%	Camphene	Monoterpene
9	10.30	0.03%	Isoamyl propionate	Aliphatic Ester
10	10.37	0.50%	2-Pentyl propionate?	
11	10.56	0.06%	beta-Pinene	Monoterpene
12	11.15	0.46%	trans-Dehydroxy linalool oxide	Monoterpene Ether
13	11.71	1.84%	Isobutyl 2-methylbutyrate	Aliphatic Ester
14	11.80	0.49%	cis-Dehydroxylinalool oxide	Monoterpenol
15	11.91	0.83%	UK Compound	
16	12.17	3.04%	Isoamyl isobutyrate	Aliphatic Ester
17	12.36	26.28%	2-Methylbutyl isobutyrate	Aliphatic Ester
18	12.65	1.06%	para-Cymene	Monoterpene
19	12.85	0.18%	Limonene	Monoterpene
20	12.96	0.27%	1,8-Cineole	Monoterpene Ether
21	13.37	0.19%	9.19 Heptyl acetate <2->	Monoterpene Ester
22	13.46	0.40%	Isoamyl methacrylate	Aliphatic Ester
23	13.84	1.92%	Isobutyl angelate	Aliphatic Ester
24	14.00	1.86%	UK Compound	
25	14.18	0.78%	gamma-Terpinene	Monoterpene
26	14.62	0.84%	UK Compound	
27	14.69	0.42%	trans-Sabinene hydrate	Monoterpenol
28	15.19	1.04%	Isobutyl tiglate	Aliphatic Ester
29	15.42	0.17%	Terpinolene	Monoterpene
30	15.73	0.12%	Butyl angelate	Aliphatic Ester
31	16.15	1.90%	Isopentyl 2-methylbutyrate	Aliphatic Ester
32	16.32	5.92%	2-Methylbutyl 2-methylbutyrate	Aliphatic Ester
33	16.46	0.12%	Isoamyl isovalerate	Aliphatic Ester
34	16.56	1.18%	2-Methyl Butyl Isovalerate	Monoterpene Ester
35	17.19	0.20%	cis-para-Menth-2-en-1-ol	Monoterpenol

ESSENTIAL VALIDATION SERVICES | 747 SW 2ND AVE GAINESVILLE, FLORIDA 32601 | 317-361-5044

Client



Source

Cape Chamomile (*Eriocephalus punctulatus*)

SA-58999

Number	RT	Area %	Compound Name	Chemical Family
36	18.028	0.15%	trans-para-Menth-2-en-1-ol	Monoterpenol
37	18.16	1.08%	Camphor	Monoterpene Ketone
38	18.36	0.29%	Isoamyl angelate	Aliphatic Ester
39	18.55	3.80%	Isoamyl tiglate	Aliphatic Ester
40	18.73	0.10%	Isopulegol	Monoterpenol
41	18.90	0.05%	Pinocarvone	Monoterpene Ketone
42	19.37	1.75%	Borneol	Monoterpenol
43	19.80	2.62%	Terpinen-4-ol	Monoterpenol
44	20.48	0.31%	alpha-Terpineol	Monoterpenol
45	20.77	6.37%	UK Compound	
46	21.15	0.15%	trans-Carveol	Monoterpenol
47	23.09	4.17%	3-Methylpentyl angelate	Aliphatic Ester
48	24.54	0.14%	Bornyl acetate	Monoterpene Ester
49	27.88	0.18%	Neryl acetate	Monoterpene Ester
50	28.40	0.04%	Longicyclene	Sesquiterpene
51	28.54	0.96%	alpha-Copaene	Sesquiterpene
52	28.72	0.26%	Geranyl acetate	Monoterpene Ester
53	29.60	0.05%	Methyl eugenol	Phenylpropanoid
54	30.35	0.20%	cis-Caryophyllene	Sesquiterpene
55	32.01	0.06%	allo-Aromadendrene	Sesquiterpene
56	33.19	0.10%	beta-Selinene	Sesquiterpene
57	33.48	0.13%	Bicyclogermacrene	Sesquiterpene
58	34.32	1.43%	Laciniatafuranone H	
59	34.79	1.60%	Artedouglasia oxide C	Sesquiterpene Ester
60	34.99	0.17%	29.96 Laciniata furanone G?	
61	35.18	0.26%	29.96 Laciniata furanone isomer?	
62	35.69	0.57%	30.47 Laciniata furanone E	Sesquiterpene Ketone
63	36.55	0.57%	31.22 Artedouglasia oxide D	Sesquiterpene Ester
64	36.63	0.53%	Spathulenol	Sesquiterpenol
65	36.81	0.30%	Caryophyllene oxide	Sesquiterpene Ether
66	37.30	0.09%	Viridiflorol	Sesquiterpenol
67	37.69	0.06%	Humulene epoxide II	Sesquiterpene Ether
68	37.85	0.03%	Globulol	Sesquiterpenol
69	38.33	0.05%	beta-Copaen-4-alpha-ol	Sesquiterpenol
70	38.53	0.20%	Ledol	Sesquiterpenol
71	39.13	0.14%	T-Cadinol	Sesquiterpenol

ESSENTIAL VALIDATION SERVICES | 747 SW 2ND AVE GAINESVILLE, FLORIDA 32601 | 317-361-5044