



Cape Chamomile (*Eriocephalus punctulatus*)

Sample:



Client: | Nature's Gift
 Sample: | Cape Chamomile
 Latin Name: | Eriocephalus punctulatus
 Batch #: | SA-58807
 CAS Number: | 68916-49-4
 Type: | Essential Oil

Laboratory:



Essential Validation Services
<https://essentialvalidationservices.com/>
 adam@essentialvalidationservices.com
 747 SW 2nd Ave, Suite 306 IMB 12
 Gainesville, FL 32601
 317-361-5044

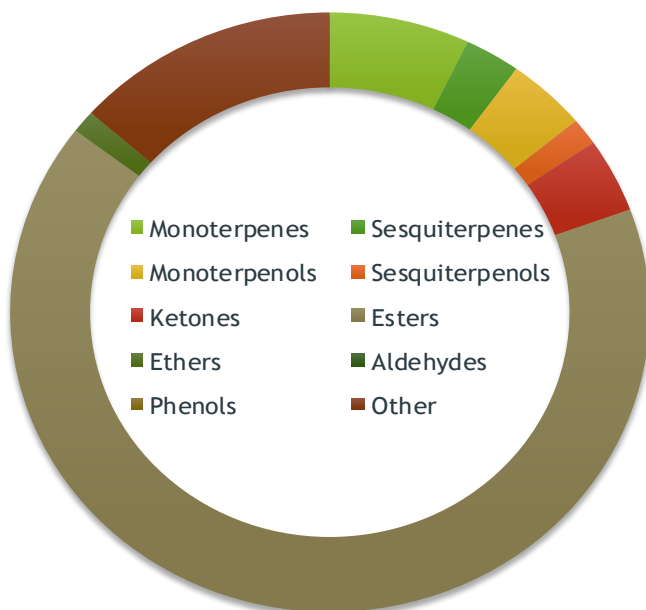
Top 5 Compounds:

No adulterants, diluents, or contaminants were detected via this method. This oil meets the expected profile for genuine essential oil of Cape Chamomile (*Eriocephalus punctulatus*).

Conclusion:



Compounds	%
2-Methylbutyl isobutyrate	30.27%
Isobutyl isobutyrate	13.12%
2-Methylbutyl 2-methylb	6.60%
Linalyl acetate	5.69%
alpha-Terpinene	2.91%



Chemical Families	
Monoterpenes	Sesquiterpenes
7.11%	2.81%
Monoterpenols	Sesquiterpenols
4.07%	1.44%
Ketones	Esters
4.01%	65.92%
Ethers	Aldehydes
1.21%	0.00%
Phenols	Other
0.00%	13.43%

X *Adam Christensen*
 Adam Christensen
 CEO



ESSENTIAL VALIDATION SERVICES | 747 SW 2ND AVE GAINESVILLE, FLORIDA 32601 | 317-361-5044



Cape Chamomile (*Eriocephalus punctulatus*)

Total Percentage		86.57%			
Number	RT	Area %	Compound Name	RI	Chemical Family
1	17.13	0.01%	(E)-beta-Ocimene	1047.70	Monoterpene
2	16.70	0.01%	(Z)-beta-Ocimene	1037.80	Monoterpene
3	16.42	0.27%	1,8-Cineole	1031.80	Monoterpene Ether
4	19.37	6.60%	2-Methylbutyl 2-methylbutyrate	1102.10	Aliphatic Ester
5	10.18	0.54%	2-Methylbutyl acetate	871.00	Aliphatic Ester
6	15.84	30.27%	2-Methylbutyl isobutyrate	1013.00	Aliphatic Ester
7	38.57	0.05%	alpha-Bisabolol	1684.43	Sesquiterpenol
8	29.34	1.42%	alpha-Copaene	1379.00	Sesquiterpene
9	12.34	0.72%	alpha-Pinene	936.10	Monoterpene
10	15.64	2.91%	alpha-Terpinene	1014.00	Monoterpene
11	22.81	0.24%	alpha-Terpineol	1191.71	Monoterpenol
12	28.35	0.09%	alpha-Terpinyl acetate	1353.00	Monoterpene Ether
13	34.26	1.40%	artedouglasia oxide A	1534.00	Sesquiterpene Ketone
14	33.91	1.10%	artedouglasia oxide C	1529.10	Sesquiterpene Ketone
15	35.00	0.48%	artedouglasia oxide D	1559.00	Sesquiterpene Ketone
16	30.80	0.20%	beta-Caryophyllene	1427.14	Sesquiterpene
17	29.85	0.85%	beta-Elemene	1389.20	Sesquiterpene
18	14.12	0.15%	beta-Pinene	974.00	Monoterpene
19	33.21	0.34%	Bicyclogermacrene	1490.71	Sesquiterpene
20	21.90	0.49%	Borneol	1168.71	Monoterpenol
21	6.41	0.06%	Butyl acetate	811.00	Aliphatic Ester
22	18.37	0.86%	Butyl angelate	1092.00	Aliphatic Ester
23	12.95	0.42%	Camphene	950.30	Monoterpene
24	21.01	1.01%	Camphor	1147.55	Monoterpene Ketone
25	35.85	0.27%	Caryophyllene oxide	1594.86	Sesquiterpene Ether
26	15.37	1.15%	cis-Dehydroxylinalool oxide	1006.00	Monoterpenol
27	17.56	0.82%	gamma-Terpinene	1054.00	Monoterpene
28	10.10	0.03%	Isoamyl acetate	869.00	Aliphatic Ester
29	21.28	2.83%	Isoamyl angelate	1154.75	Aliphatic Ester
30	16.87	0.35%	Isoamyl methacrylate	1046.00	Aliphatic Ester
31	29.71	0.04%	Isoamyl phenylacetate		
32	13.85	0.02%	Isoamyl propionate	968.00	Aliphatic Ester
33	21.11	0.18%	Isoamyl tiglate	1152.50	Aliphatic Ester
34	15.23	1.93%	Isobutyl 2-methylbutyrate	991.50	Aliphatic Ester
35	17.24	1.43%	Isobutyl angelate	1053.75	Aliphatic Ester
36	11.60	13.12%	Isobutyl isobutyrate	908.00	Aliphatic Ester
37	12.60	0.11%	Isobutyl methacrylate	939.00	Aliphatic Ester
38	19.20	1.67%	Isopentyl 2-methylbutyrate	1097.00	Aliphatic Ester
39	34.63	0.34%	Laciniata Furanone E?		
40	34.10	0.16%	Laciniata Furanone G?		



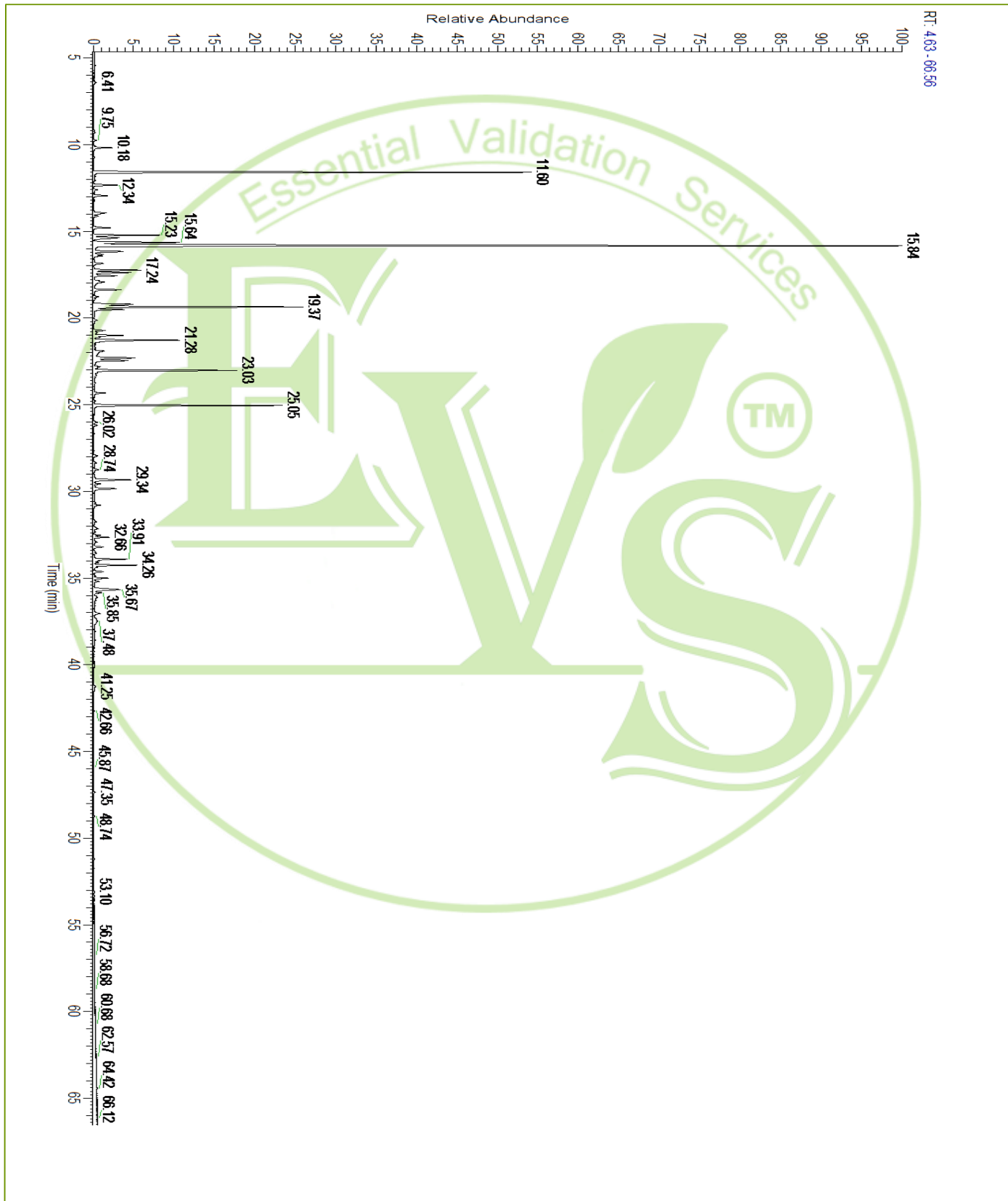
Cape Chamomile (*Eriocephalus punctulatus*)

Number	RT	Area %	Compound Name	RI	Chemical Family
41	16.33	0.31%	Limonene	1029.50	Monoterpene
42	25.05	5.69%	Linalyl acetate	1263.80	Monoterpene Ester
43	28.74	0.16%	Neryl acetate	1362.90	Monoterpene Ester
44	16.17	1.03%	para-Cymene	1024.30	Monoterpene
45	21.72	0.02%	Pinocarvone	1161.43	Monoterpene Ketone
46	12.07	0.04%	Propyl 2-methylbutyrate	934.00	Aliphatic Ester
47	9.30	0.03%	Propyl isobutyrate	847.00	Aliphatic Ester
48	13.94	0.52%	Sabinene	973.00	Monoterpene
49	35.67	1.39%	Spathulenol	1587.00	Sesquiterpenol
50	22.30	1.66%	Terpinen-4-ol	1180.57	Monoterpenol
51	18.77	0.16%	Terpinolene	1092.10	Monoterpene
52	14.80	0.58%	trans-Dehydroxy linalool oxide	990.50	Monoterpene Ether
53	17.93	0.53%	trans-Sabinene hydrate	1072.00	Monoterpenol
54	11.84	0.05%	Tricyclene	923.00	Monoterpene

ESSENTIAL VALIDATION SERVICES | 747 SW 2ND AVE GAINESVILLE, FLORIDA 32601 | 317-361-5044



Cape Chamomile (Eriocephalus punctulatus)



ESSENTIAL VALIDATION SERVICES | 747 SW 2ND AVE GAINESVILLE, FLORIDA 32601 | 317-361-5044