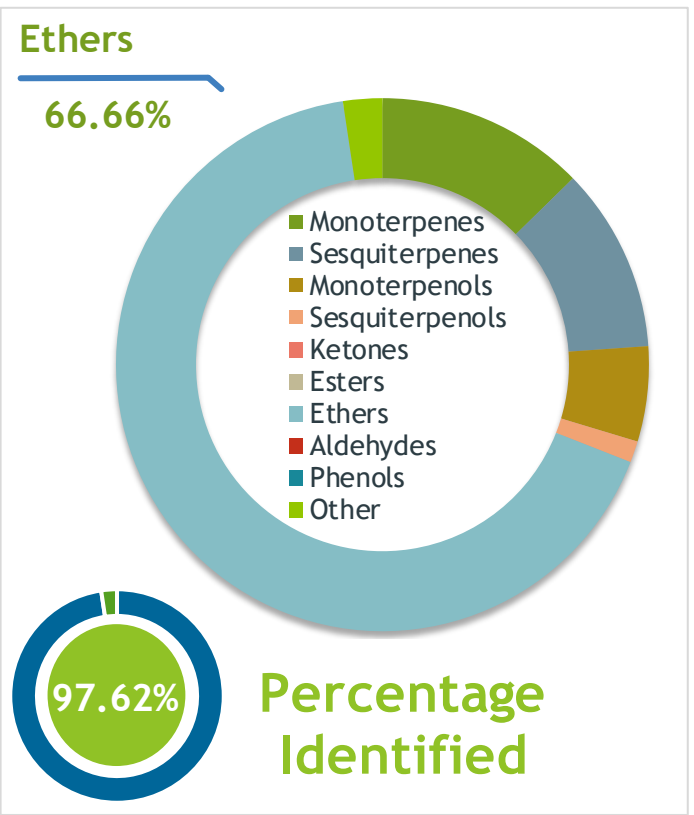


Client  **Source** 

Cajeput (*Melaleuca cajuputi*)
TH-58845

Sample Cajeput (*Melaleuca cajuputi*)
Batch #:..... TH-58845
Type:..... Essential Oil
CAS Number:... 8008-98-8
Nature's Gift



Client  **Website** 

Primary

65.28%	<u>1,8-Cineole</u>
5.41%	<u>alpha-Pinene</u>
4.97%	<u>alpha-Terpineol</u>

Result 

Conclusion No adulterants, diluents, or contaminants were detected via this method. This oil meets the expected profile for genuine essential oil of Cajeput (*Melaleuca cajuputi*).
Internal Number: | EVS-2632


Essential Validation Services
747 SW 2nd Ave IMB 12 Suite 306
Gainesville, FL 32601
317.361.5044 | essentialvalidationservices.com
adam@essentialvalidationervices.com


Monoterpenes	12.6	12.68%
Sesquiterpenes	11.	11.21%
Monoterpenols	5	5.77%
Sesquiterpenols		1.30%
Ketones		0.00%
Esters		0.00%
Ethers	66.66%	66.66%
Aldehydes		0.00%
Phenols		0.00%
Other		2.38%

ESSENTIAL VALIDATION SERVICES | 747 SW 2ND AVE GAINESVILLE, FLORIDA 32601 | 317-361-5044

Client



Source



Cajeput (*Melaleuca cajuputi*)
TH-58845

Total Percentage		97.62%			
Number	RT	Area %	Compound Name	RI	Chemical Family
1	11.87	0.24%	alpha-Thujene	927.80	Monoterpene
2	12.14	5.41%	alpha-Pinene	936.10	Monoterpene
3	12.73	0.02%	Camphene	950.30	Monoterpene
4	13.78	0.01%	Sabinene	973.00	Monoterpene
5	13.91	1.16%	beta-Pinene	974.00	Monoterpene
6	14.53	0.49%	Myrcene	989.20	Monoterpene
7	15.08	0.46%	alpha-Phellandrene	1002.00	Monoterpene
8	15.59	0.39%	alpha-Terpinene	1014.00	Monoterpene
9	15.92	0.70%	para-Cymene	1024.30	Monoterpene
10	16.34	65.28%	1,8-Cineole	1031.80	Monoterpene Ether
11	17.35	3.09%	gamma-Terpinene	1054.00	Monoterpene
12	18.55	0.71%	Terpinolene	1092.10	Monoterpene
13	18.97	0.13%	Linalool	1099.00	Monoterpenol
14	21.65	0.10%	delta-Terpineol	1166.00	Monoterpenol
15	22.06	0.57%	Terpinen-4-ol	1180.57	Monoterpenol
16	22.61	4.97%	alpha-Terpineol	1191.71	Monoterpenol
17	28.13	0.86%	alpha-Terpinyl acetate	1353.00	Monoterpene Ether
18	29.00	0.17%	alpha-Ylangene	1371.33	Sesquiterpene
19	29.16	0.14%	alpha-Copaene	1379.00	Sesquiterpene
20	29.64	0.12%	beta-Elemene	1389.20	Sesquiterpene
21	30.27	0.19%	alpha-Gurjunene	1412.00	Sesquiterpene
22	30.64	4.07%	beta-Caryophyllene	1427.14	Sesquiterpene
23	31.26	0.75%	Aromadendrene	1449.80	Sesquiterpene
24	31.71	1.87%	alpha-Humulene	1461.43	Sesquiterpene
25	32.75	1.59%	beta-Selinene	1487.57	Sesquiterpene
26	33.01	1.54%	alpha-Selinene	1492.50	Sesquiterpene
27	33.31	0.32%	(E,E)-alpha-Farnesene	1508.14	Sesquiterpene
28	33.79	0.28%	gamma-Cadinene	1515.29	Sesquiterpene
29	33.88	0.03%	delta-Cadinene	1524.14	Sesquiterpene
30	34.23	0.14%	trans-Calamenene	1529.50	Sesquiterpene
31	35.68	0.52%	Caryophyllene oxide	1594.86	Sesquiterpene Ether
32	35.92	0.64%	Viridiflorol	1596.00	Sesquiterpenol
33	36.26	0.08%	Guaiol	1603.86	Sesquiterpenol
34	37.02	0.21%	T-Cadinol	1640.43	Sesquiterpenol
35	37.58	0.14%	alpha-Eudesmol	1652.86	Sesquiterpenol

ESSENTIAL VALIDATION SERVICES | 747 SW 2ND AVE GAINESVILLE, FLORIDA 32601 | 317-361-5044

Client



Source



Cajeput (*Melaleuca cajuputi*)
TH-58845

Number	RT	Area %	Compound Name	RI	Chemical Family
36	37.67	0.23%	alpha-Cadinol	1655	Sesquiterpenol

ESSENTIAL VALIDATION SERVICES | 747 SW 2ND AVE GAINESVILLE, FLORIDA 32601 | 317-361-5044

- This report is the digitally signed and will only be considered valid if the signature is intact.
- This report may not be published without the consent of Essential Validation Services.
- Chromatograph image may not show full run time