



Sample:

Client: | Nature's Gift
 Sample: | Blue Cypress (Callitris intratropica)
 Batch # | AU-58792
 CAS Number | 8013-86-3
 Type: | Essential Oil

Conclusion:

- No adulterants, diluents, or contaminants were detected via this method.
- This oil meets the expected profile for genuine essential oil of Blue Cypress (Callitris intratropica).



X 

Validated By:

Essential Validation Services

747 SW 2nd Ave, Gainesville, FL 32601

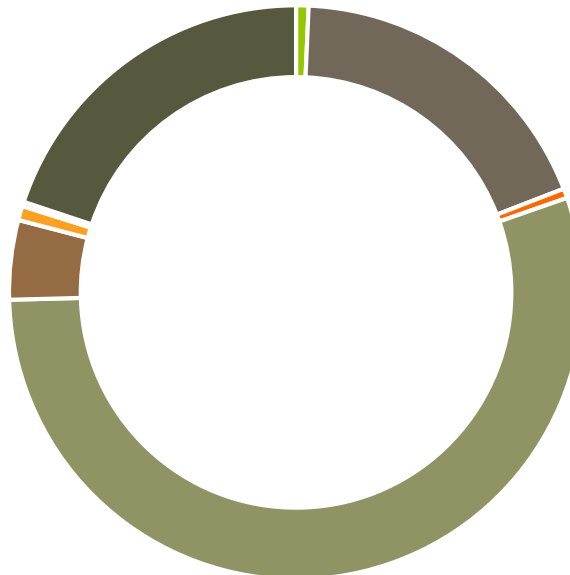
Phone: 317-361-5044 E-mail: Adam@essentialvalidationservices.com

Summary of Analyses

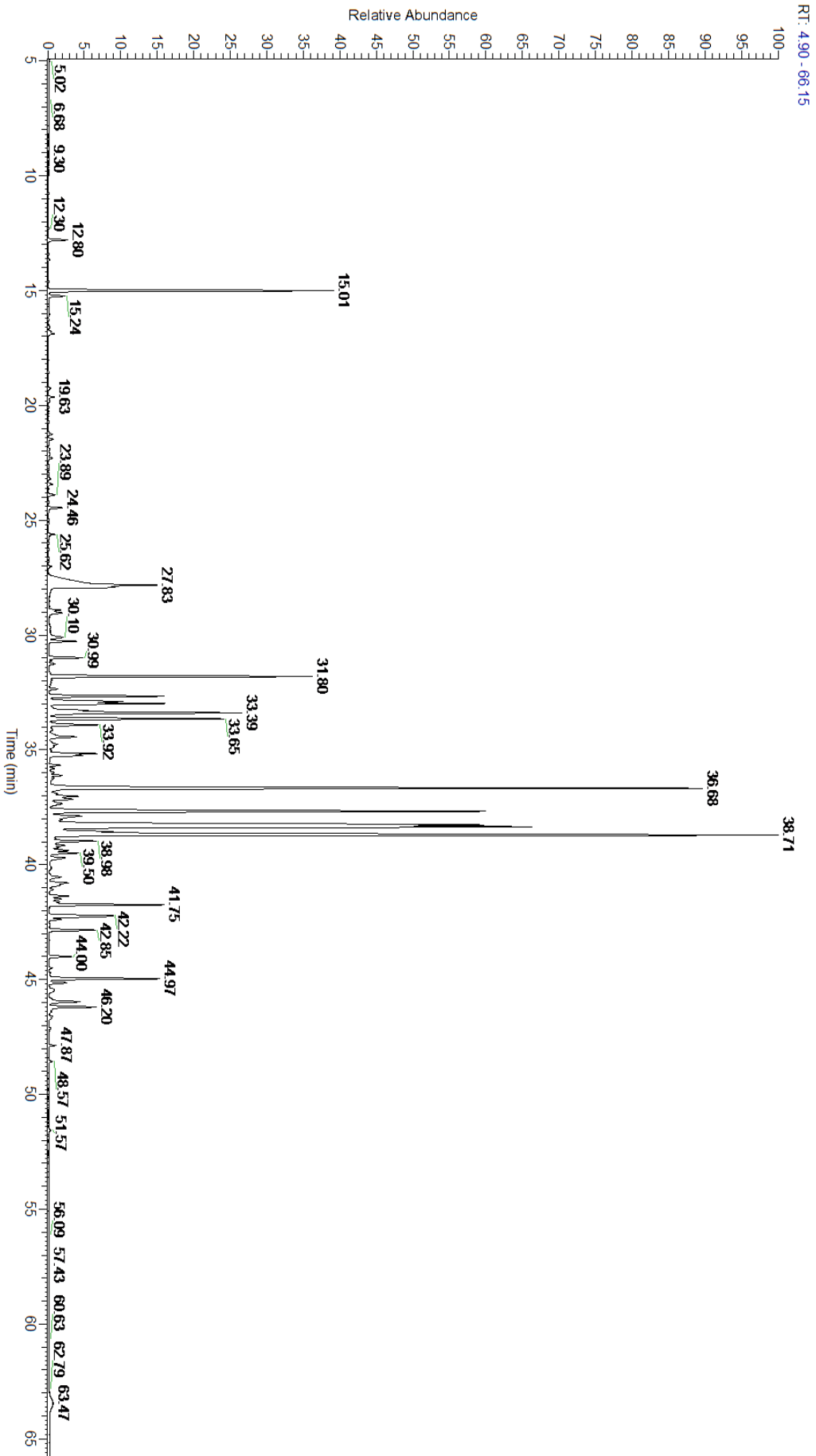
A fresh sample of Blue Cypress (Callitris intratropica) Essential Oil (10 uL in .5to.5 mL Hexane + ETOH) was prepared and analyzed via split injection GC/EI-MS.

Main Compounds	Percentages
Bulnesol	13.87%
Guaiol	11.74%
beta-Eudesmol	9.62%
gamma-Eudesmol	8.51%
alpha-Eudesmol	8.16%
6-Methyl-5-hepten-2-one	4.29%
alpha-Guaiene	4.09%
Citronellic acid	3.75%
beta-Selinene	3.34%
Eremophilene	2.87%
beta-Chamigrene	1.87%
Thujopsadiene	1.86%
Dihydrocolumellarin	1.85%

Monoterpenes	Sesquiterpenes	Monoterpenols	Sesquiterpenols	Ketones
0.70%	18.42%	0.54%	54.93%	4.47%
Esters	Ethers	Aldehydes	Phenols	Other
0.80%	0.25%	0.00%	0.00%	19.89%



- Monoterpenes ■ Sesquiterpenes ■ Monoterpenols
- Sesquiterpenols ■ Ketones ■ Esters
- Ethers ■ Phenols ■ Other



Total Percentage		89.53%			
Peak Number	RT	Area %	Compound Name	RI	Chemical Family
1	10.78	0.01%	Santene	884.00	Normonoterpene
2	12.30	0.01%	Tricyclene	923.00	Monoterpene
3	12.80	0.28%	alpha-Pinene	936.10	Monoterpene
4	13.41	0.01%	Camphene	950.30	Monoterpene
5	13.66	0.02%	Thuja-2,4(10)-diene	953.00	Monoterpene
6	14.61	0.01%	beta-Pinene	974.00	Monoterpene
7	15.01	4.29%	6-Methyl-5-hepten-2-one	982.00	Aliphatic Ketone
8	15.24	0.24%	Myrcene	989.20	Monoterpene
9	16.04	0.02%	delta-3-Carene	1008.00	Monoterpene
10	16.59	0.02%	para-Cymene	1024.30	Monoterpene
11	16.79	0.05%	Limonene	1029.50	Monoterpene
12	16.88	0.08%	1,8-Cineole	1031.80	Monoterpene Ether
13	18.56	0.01%	Coniferous biomarker	1076.00	Monoterpenol
14	19.26	0.04%	para-Cymenene	1092.43	Monoterpene
15	19.63	0.09%	Linalool	1099.00	Monoterpenol
16	21.25	0.06%	trans-Pinocarveol	1143.75	Monoterpenol
17	21.47	0.07%	Camphor	1147.55	Monoterpene Ketone
18	22.28	0.06%	Borneol	1168.71	Monoterpenol
19	22.61	0.01%	cis-Pinocamphone	1172.00	Monoterpene Ketone
20	22.71	0.01%	Terpinen-4-ol	1180.57	Monoterpenol
21	23.20	0.04%	alpha-Terpineol	1191.71	Monoterpenol
22	23.44	0.07%	Myrtenol	1198.00	Monoterpenol
23	23.89	0.10%	Verbenone	1213.80	Monoterpene Ketone
24	24.46	0.20%	Citronellol	1229.25	Monoterpenol
25	25.62	0.08%	Methyl citronellate	1261.00	Monoterpene Ester
26	27.83	3.75%	Citronellic acid	1312.00	Monoterpene Acid
27	27.93	0.72%	Methyl geranate	1323.80	Monoterpene Ester
28	29.05	0.27%	Geranic acid	1379.30	Monoterpene Acid
29	30.27	0.41%	beta-Elementene	1389.20	Sesquiterpene
30	30.99	0.55%	alpha-Cedrene	1410.75	Sesquiterpene
31	31.27	0.09%	beta-Caryophyllene	1427.14	Sesquiterpene
32	31.80	4.09%	alpha-Guaiene	1438.67	Sesquiterpene
33	32.35	0.13%	alpha-Humulene	1461.43	Sesquiterpene
34	32.66	1.86%	Thujopsadiene	1465.10	Sesquiterpene
35	32.89	1.22%	gamma-Selinene	1465.50	Sesquiterpene
36	32.99	1.87%	beta-Chamigrene	1477.00	Sesquiterpene
37	33.39	3.34%	beta-Selinene	1487.57	Sesquiterpene
38	33.65	2.87%	Eremophilene	1498.00	Sesquiterpene
39	33.92	0.82%	delta-Guaiene	1511.50	Sesquiterpene
40	34.12	0.08%	gamma-Cadinene	1515.29	Sesquiterpene
41	34.44	0.61%	delta-Cadinene	1524.14	Sesquiterpene
42	35.17	0.78%	Elemol	1538.00	Sesquiterpenol
43	35.25	0.48%	Selina-3,7(11)-diene	1544.50	Sesquiterpene

