



316 Old Hickory Blvd East, Madison, TN 37115

tel (615)612-4270 fax (615)860-9171

sold@naturesgift.com

Balancing Body, Mind and Spirit with Pure Essential Oils

Since 1995

www.naturesgift.com

Bergamot

Citrus bergamia

Batch No. IT-59083

Italy



Monoterpenes	53.99%	Aldehydes	0.74%	Sesquiterpenes	1.2%
limonene	36.21	citral	0.38	β bisabolene	0.47
γ terpinene	6.51	neral	0.22	(E) α bergamotene	0.32
β pinene	6.27	decanal	0.06	(Z) caryophyllene	0.28
myrcene	1.42	octanal	0.04	(E) β farnesene	0.04
α pinene	1.17	nonanal	0.04	(Z) α bisabolene	0.03
sabinene	1.10			α humulene	0.02
terpinolene	0.35			(Z) α bergamotene	0.02
para-cymene	0.28			germacrene D	0.01
α thujene	0.25	Esters	30.94%	β santalene	0.01
(E) β ocimene	0.23	linalyl acetate	29.01		
α terpinene	0.09	geranyl acetate	0.75	Sesquiterpenols	0.02%
(Z) β ocimene	0.05	neryl acetate	0.72	epi α bisabolol	0.02
α phellandrene	0.04	octyl acetate	0.2		
camphene	0.02	α terpinyl acetate	0.19	Other	0.12%
		linalyl propionate	0.02	iso-bergaptene	0.12
		citronellyl acetate	0.02		
		decyl acetate	0.02		
		hexyl acetate	0.01		
Monoterpenols	12.73%	Ketones	0.02%		
linalol	12.45	nootkatone	0.02		
α terpineol	0.17				
nerol	0.05				
terpinen-4-ol	0.03				
trans sabinene hydrate	0.03				

Raw Material: rhind

Botanical Name: Citrus bergamia

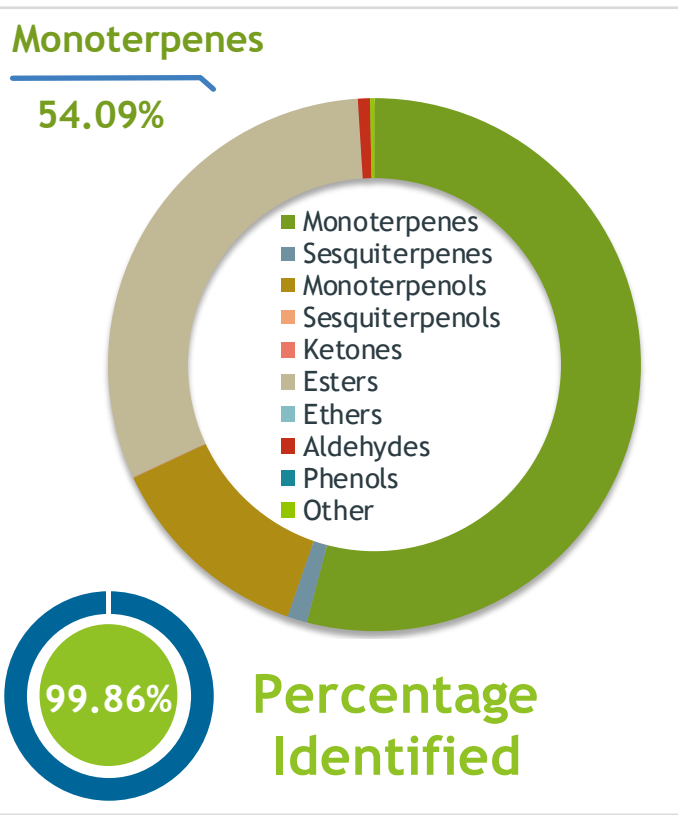
Production Method: Steam distillation

Date of analysis: 7/24/2020

Client  **Source** 

Bergamot (Citrus bergamia)
IT-59083

Sample Bergamot (Citrus bergamia)
Batch #:..... IT-59083
Type:..... Essential Oil
CAS Number:... 8007-75-8
Nature's Gift



Client  **Website** 

Primary
36.21% Limonene
29.01% Linalyl acetate
12.45% Linalool

Result 

Conclusion No adulterants, diluents, or contaminants were detected via this method. This oil meets the expected profile for genuine Essential Oil of Bergamot (Citrus bergamia)
Internal Number: | EVS-3806


Essential Validation Services
747 SW 2nd Ave IMB 12 Suite 306
Gainesville, FL 32601
317.361.5044 | <https://essentialvalidationservices.com/>
adam@essentialvalidationservices.com


Monoterpenes	54.09%	54.09%
Sesquiterpenes	1.20%	1.20%
Monoterpenols	12.73%	12.73%
Sesquiterpenols	0.02%	0.02%
Ketones	0.02%	0.02%
Esters	30.94%	30.94%
Ethers	0.00%	0.00%
Aldehydes	0.74%	0.74%
Phenols	0.00%	0.00%
Other	0.26%	0.26%

ESSENTIAL VALIDATION SERVICES | 747 SW 2ND AVE GAINESVILLE, FLORIDA 32601 | 317-361-5044

- Essential Oil testing is performed by using qualitative GC-MS. Method: SOP.T.01 Client Method
- This report may not be published without the consent of Essential Validation Services.
- Chromatograph image may be requested
- This report is valid for 1 year from the analyzed date

Client



Source

Bergamot (*Citrus bergamia*)

IT-59083

Total Percentage		99.86%		
Number	RT	Area %	Compound Name	Chemical Family
1	8.29	0.25%	alpha-Thujene	Monoterpene
2	8.55	1.17%	alpha-Pinene	Monoterpene
3	9.18	0.02%	Camphene	Monoterpene
4	10.14	1.10%	Sabinene	Monoterpene
5	10.31	6.27%	beta-Pinene	Monoterpene
6	10.89	1.42%	Myrcene	Monoterpene
7	11.47	0.04%	Octanal	Aliphatic Aldehyde
8	11.55	0.04%	alpha-Phellandrene	Monoterpene
9	11.89	0.01%	Hexyl acetate	Aliphatic Ester
10	12.03	0.19%	alpha-Terpinene	Monoterpene
11	12.37	0.28%	para-Cymene	Monoterpene
12	12.65	36.21%	Limonene	Monoterpene
13	12.95	0.05%	(Z)-beta-Ocimene	Monoterpene
14	13.41	0.23%	(E)-beta-Ocimene	Monoterpene
15	13.91	6.51%	gamma-Terpinene	Monoterpene
16	14.41	0.03%	trans-Sabinene hydrate	Monoterpenol
17	15.14	0.35%	Terpinolene	Monoterpene
18	15.90	12.45%	Linalool	Monoterpenol
19	16.08	0.04%	Nonanal	Aliphatic Aldehyde
20	19.49	0.03%	Terpinen-4-ol	Monoterpenol
21	20.17	0.17%	alpha-Terpineol	Monoterpenol
22	20.77	0.06%	Decanal	Aliphatic Aldehyde
23	21.02	0.20%	Octyl acetate	Aliphatic Ester
24	21.58	0.05%	Nerol	Monoterpenol
25	22.17	0.22%	Neral	Monoterpene Aldehyde
26	22.86	29.01%	Linalyl acetate	Monoterpene Ester
27	23.53	0.38%	Citral	Monoterpene Aldehyde
28	26.39	0.02%	Linalyl propionate	Monoterpene Ester
29	26.98	0.19%	alpha-Terpinyl acetate	Monoterpene Ester
30	27.19	0.02%	Citronellyl acetate	Monoterpene Ester
31	27.56	0.72%	Neryl acetate	Monoterpene Ester
32	28.41	0.75%	Geranyl acetate	Monoterpene Ester
33	29.76	0.02%	Decyl acetate	Monoterpene Ester
34	29.84	0.02%	cis-alpha-Bergamotene	Sesquiterpene
35	30.00	0.28%	cis-Caryophyllene	Sesquiterpene

ESSENTIAL VALIDATION SERVICES | 747 SW 2ND AVE GAINESVILLE, FLORIDA 32601 | 317-361-5044

- Essential Oil testing is performed by using qualitative GC-MS. Method: SOP.T.01 Client Method
 - This report may not be published without the consent of Essential Validation Services.
 - Chromatograph image may be requested
 - This report is valid for 1 year from the analyzed date



Bergamot (*Citrus bergamia*)
IT-59083

Number	RT	Area %	Compound Name	Chemical Family
36	30.66	0.32%	trans-alpha-Bergamotene	Sesquiterpene
37	31.47	0.02%	alpha-Humulene	Sesquiterpene
38	31.53	0.04%	(E)-beta-Farnesene	Sesquiterpene
39	31.70	0.01%	beta-Santalene	Sesquiterpene
40	32.52	0.01%	Germacrene D	Sesquiterpene
41	33.44	0.03%	cis-alpha-Bisabolene	Sesquiterpene
42	33.72	0.47%	beta-Bisabolene	Sesquiterpene
43	40.51	0.02%	epi-alpha-Bisabolol	Sesquiterpenol
44	44.41	0.02%	Nootkatone	Sesquiterpene Ketone
45	52.28	0.12%	iso-Bergaptene	Coumarin

ESSENTIAL VALIDATION SERVICES | 747 SW 2ND AVE GAINESVILLE, FLORIDA 32601 | 317-361-5044