

Sample:

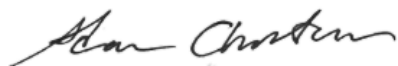
Client: | Nature's Gift
Sample: | Bergamot Mint (Mentha citrata)
Batch # | US-10611
CAS Number | 68917-15-7
Type: | Essential Oil

Conclusion:

- No adulterants, diluents, or contaminants were detected via this method.
- This oil meets the expected profile for genuine essential oil of Bergamot Mint (Mentha citrata).



X



Validated By:

Essential Validation Services

747 SW 2nd Ave, Gainesville, FL 32601

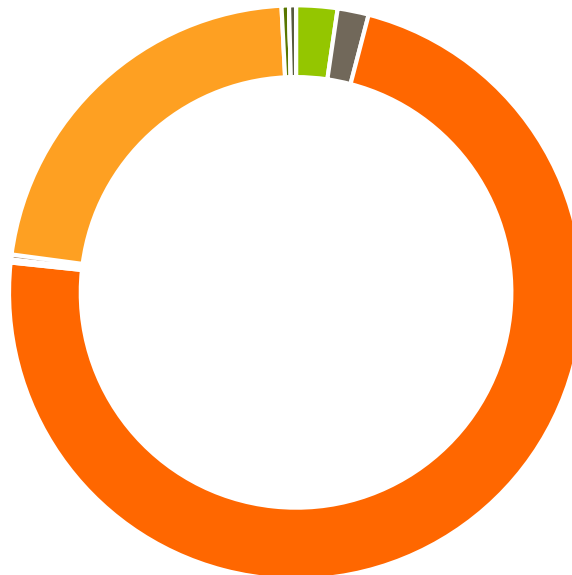
Phone: 317-361-5044 E-mail: Adam@essentialvalidationservices.com

Summary of Analyses

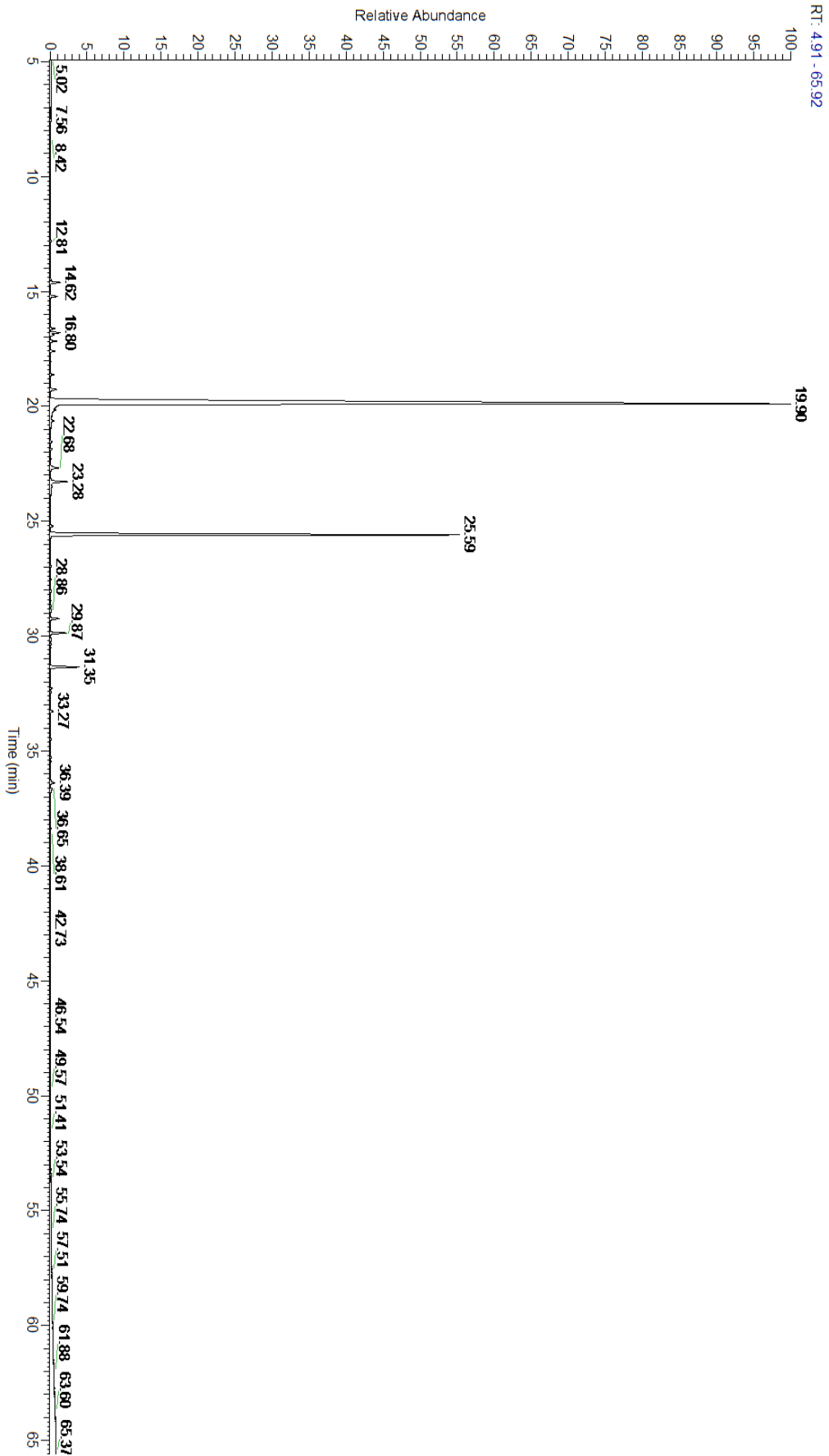
A fresh sample of Bergamot Mint (Mentha citrata) Essential Oil (10 uL in .5to.5 mL Hexane + ETOH) was prepared and analyzed via split injection GC/EI-MS.

Main Compounds	Percentages
Linalool	71.02%
Linalyl acetate	20.70%
beta-Caryophyllene	1.39%
alpha-Terpineol	0.91%
Geranyl acetate	0.71%
Menthol	0.48%
beta-Pinene	0.45%
Limonene	0.44%

Monoterpenes	Sesquiterpenes	Monoterpenols	Sesquiterpenols	Ketones
2.32%	1.75%	72.59%	0.18%	0.27%
Esters	Ethers	Aldehydes	Phenols	Other
22.08%	0.42%	0.00%	0.00%	0.39%



- Monoterpenes
- Sesquiterpenes
- Monoterpenols
- Sesquiterpenols
- Ketones
- Esters
- Ethers
- Phenols
- Other



Total Percentage		99.63%			
Peak Number	RT	Area %	Compound Name	RI	Chemical Family
1	12.54	Co-Eluting	alpha-Thujene	927.80	Monoterpene
2	12.81	0.04%	alpha-Pinene	936.10	Monoterpene
3	14.49	0.05%	Sabinene	973.00	Monoterpene
4	14.62	0.45%	beta-Pinene	974.00	Monoterpene
5	15.21	0.32%	Myrcene	989.20	Monoterpene
6	16.62	0.19%	para-Cymene	1024.30	Monoterpene
7	16.80	0.44%	Limonene	1029.50	Monoterpene
8	16.90	0.18%	1,8-Cineole	1031.80	Monoterpene Ether
9	17.16	0.27%	(Z)-beta-Ocimene	1037.80	Monoterpene
10	17.60	0.20%	(E)-beta-Ocimene	1047.70	Monoterpene
11	18.06	0.02%	gamma-Terpinene	1054.00	Monoterpene
12	18.62	0.16%	cis-Linalool oxide (5) (furanoid)	1075.10	Monoterpenol
13	19.26	0.33%	Terpinolene	1092.10	Monoterpene
14	19.90	71.02%	Linalool	1099.00	Monoterpenol
15	20.17	0.16%	Octen-3-yl acetate	1107.00	Monoterpene Ester
16	20.64	0.10%	3-Octyl acetate	1124.00	Aliphatic Ester
17	20.87	0.01%	Alloocimene	1129.90	Monoterpene
18	21.55	0.08%	Camphor	1147.55	Monoterpene Ketone
19	21.87	0.07%	Menthone	1155.00	Monoterpene Ketone
20	22.68	0.48%	Menthol	1177.40	Monoterpenol
21	22.79	0.02%	Terpinen-4-ol	1180.57	Monoterpenol
22	23.28	0.91%	alpha-Terpineol	1191.71	Monoterpenol
23	25.21	0.12%	Carvone	1248.14	Monoterpene Ketone
24	25.59	20.70%	Linalyl acetate	1263.80	Monoterpene Ester
25	26.95	0.02%	Menthyl acetate	1297.00	Monoterpene Ester
26	28.06	0.02%	Myrtenyl acetate	1329.00	Monoterpene Ester
27	29.25	0.37%	Neryl acetate	1362.90	Monoterpene Ester
28	29.87	0.71%	Geranyl acetate	1379.20	Monoterpene Ester
29	30.20	0.02%	cis-Jasmone	1388.80	Jasmonate
30	30.35	0.05%	beta-Elemene	1389.20	Sesquiterpene
31	31.35	1.39%	beta-Caryophyllene	1427.14	Sesquiterpene
32	32.27	0.06%	(E)-beta-Farnesene	1456.29	Sesquiterpene
33	32.42	0.05%	alpha-Humulene	1461.43	Sesquiterpene
34	32.66	0.01%	Allo-aromadendrene	1471.00	Sesquiterpene
35	33.27	0.14%	Germacrene D	1484.71	Sesquiterpene
36	34.49	0.05%	delta-Cadinene	1524.14	Sesquiterpene
37	35.27	0.06%	Elemol	1538.00	Sesquiterpenol
38	36.39	0.24%	Caryophyllene oxide	1594.86	Sesquiterpene Ether
39	36.65	0.12%	Viridiflorol	1596.00	Sesquiterpenol