



316 Old Hickory Blvd East, Madison, TN 37115

tel (615)612-4270 fax (615)860-9171

sold@naturesgift.com

Healing Body, Mind and Spirit with Pure Essential Oils

Since 1995

www.naturesgift.com

Bay Laurel

Laurus nobilis

Batch No. CR-59037

Croatia

Monoterpenes	21.73%
sabinene	7.92
α pinene	4.85
β pinene	3.92
para cymene	1.81
myrcene	0.86
α thujene	0.53
γ terpinene	0.46
α terpinene	0.44
camphene	0.35
α phellandrene	0.21
terpinolene	0.18
δ 3 carene	0.08
thuja-2,4(10)-diene	0.04
pseudolimonene	0.03
o-cymene	0.03
(E) β ocimene	0.02
para-cymenene	0.02
(Z) β ocimene	0.01
tricyclene	0.01

Monoterpenols	8.03%
linalol	3.04
terpinen 4 ol	2.28
α terpineol	1.37
δ terpineol	0.36
trans sabinene hydrate	0.31
trans-pinocarveol	0.15
cis-para-Menth-2-en-1-ol	0.11
para-cymen-8-ol	0.09
nerol	0.07
trans-para-Menth-2-en-1-ol	0.06
hotrienol	0.05
trans-piperitol	0.04
trans-para-mentha-2,8-dien-1-ol	0.02
nerol oxide	0.02
trans-carveol	0.02
cis-para-mentha-1(7),8-dien-2-ol	0.02
fenchol	0.01
cis.01-para-mentha-2,8-dien-1-ol	0.01

Aldehydes	0.02%
(E) 2-hexenal	0.01
cumenal	0.01

Esters	15.07%
α terpinyl acetate	13.2
δ terpenyl acetate	0.9
bornyl acetate	0.3
neryl acetate	0.24
linalyl acetate	0.17
cis-verbenyl acetate	0.11
(E) cinnamyl acetate	0.06
cis-sabinylyl acetate	0.04
geranyl acetate	0.04
butyl acetate	0.01

Ethers	48.61%
1,8 cineole	48.15
caryophyllene oxide	0.37
β pinene oxide	0.07
humulene epoxide II	0.02

Ketones	0.22%
6-methyl-5-hepten-2-one	0.01
2-nonanone	0.02
pinocarvone	0.04
cryptone	0.01
carvone	0.02
2-undecanone	0.12

Phenols	2.32%
methyl eugenol	1.37
eugenol	0.84
elemicin	0.06
trans-isoelemicin	0.03
toluene	0.02

Sesquiterpenes	2.22%
cis-caryophyllene	0.39
β elemene	0.37
β eudesmol	0.29
β selinene	0.15
δ cadinene	0.11
α ylangene	0.11
α guaiene	0.11
γ cadinene	0.11
trans-α-bisabolene	0.1
germacrene D	0.07
α humulene	0.07
β copaene	0.06
aromadendrene	0.05
β caryophyllene	0.04
6,9 guaiadiene	0.04
valencene	0.04
β bourbonene	0.03
γ selinene	0.03
α copaene	0.02
α calacorene	0.02
β bisabolene	0.01



Sesquiterpenols	0.24%
spathulenol	0.07
globulol	0.01
junenol	0.04
γ eudesmol	0.04
pogostol	0.06
allohimachalol	0.02

Other	0.03%
(Z) hex-3-en-1-ol	0.01
tetradecane	0.01
hexadecane	0.01

Raw Material: Bay Laurel

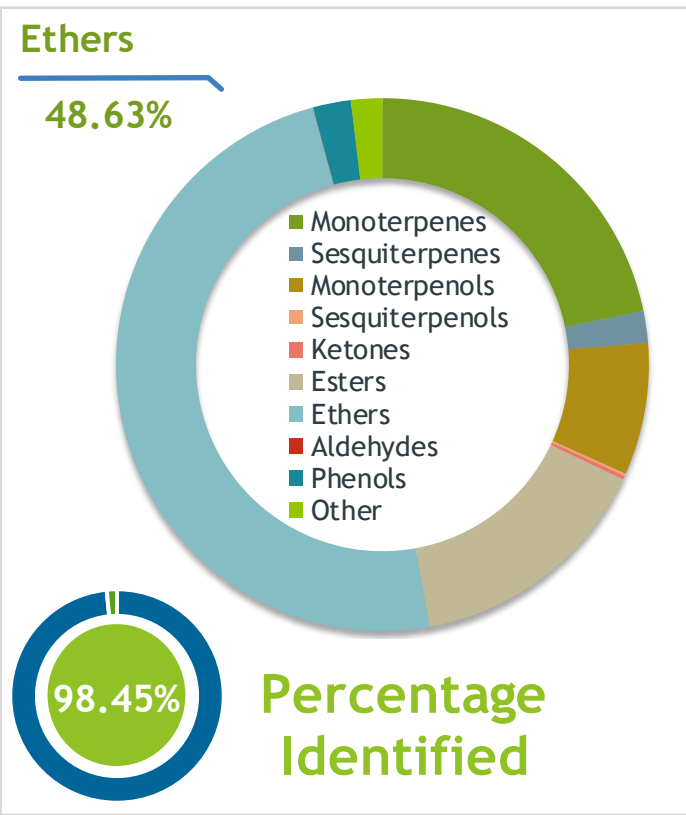
INCI Name: LAURUS NOBILIS LEAF OIL

Production Method: Steam distillation, leaves

Client  **Source** 

Bay Laurel (*Laurus nobilis* L.)
CR-59037

Sample Bay Laurel (*Laurus nobilis* L.)
Batch #:..... CR-59037
Type:..... Essential Oil
CAS Number:... 8006-78-8
Nature's Gift



Client  **Website** 

Primary
48.15% | 1,8-Cineole
13.20% | alpha-Terpinyl acetate
7.92% | Sabinene

Result 

Conclusion No adulterants, diluents, or contaminants were detected via this method. This oil meets the expected profile for genuine Essential Oil of Bay Laurel (*Laurus nobilis* L.)
Internal Number: | EVS-3637


Essential Validation Services
747 SW 2nd Ave IMB 12 Suite 306
Gainesville, FL 32601
317.361.5044 |
<https://essentialvalidationservices.com/>
adam@essentialvalidationservices.com


Monoterpenes	21.77%	21.77%
Sesquiterpenes	1.93%	1.93%
Monoterpenols	8.01%	8.01%
Sesquiterpenols	0.16%	0.16%
Ketones	0.22%	0.22%
Esters	15.07%	15.07%
Ethers	48.63%	48.63%
Aldehydes	0.02%	0.02%
Phenols	2.29%	2.29%
Other	1.90%	1.90%

ESSENTIAL VALIDATION SERVICES | 747 SW 2ND AVE GAINESVILLE, FLORIDA 32601 | 317-361-5044

- Essential Oil testing is performed by using qualitative GC-MS. Method: SOP.T.01 Client Method
- This report may not be published without the consent of Essential Validation Services.
- Chromatograph image may be requested
- This report is valid for 1 year from the analyzed date

Client



Source

Bay Laurel (*Laurus nobilis L.*)

CR-59037

Total Percentage		98.45%		
Number	RT	Area %	Compound Name	Chemical Family
1	3.82	0.02%	Toluene	Simple Phenolic
2	5.27	0.01%	Butyl acetate	Aliphatic Ester
3	5.97	0.01%	(E)-2-Hexenal	Aliphatic Aldehyde
4	6.03	0.01%	cis-Hex-3-en-1-ol	Aliphatic Alcohol
5	8.28	0.01%	Tricyclene	Monoterpene
6	8.44	0.53%	alpha-Thujene	Monoterpene
7	8.70	4.85%	alpha-Pinene	Monoterpene
8	9.11	0.04%	Thuja-2,4(10)-diene	Monoterpene
9	9.33	0.35%	Camphene	Monoterpene
10	10.30	7.92%	Sabinene	Monoterpene
11	10.47	3.92%	beta-Pinene	Monoterpene
12	10.84	0.01%	6-Methyl-5-hepten-2-one	Aliphatic Ketone
13	11.05	0.86%	Myrcene	Monoterpene
14	11.62	0.03%	Pseudolimonene	Monoterpene
15	11.72	0.21%	alpha-Phellandrene	Monoterpene
16	11.83	0.08%	delta-3-Carene	Monoterpene
17	12.20	0.44%	alpha-Terpinene	Monoterpene
18	12.33	0.03%	o-Cymene	Monoterpene
19	12.54	1.81%	para-Cymene	Monoterpene
20	12.92	48.15%	1,8-Cineole	Monoterpene Ether
21	13.12	0.01%	(Z)-beta-Ocimene	Monoterpene
22	13.59	0.02%	(E)-beta-Ocimene	Monoterpene
23	14.07	0.46%	gamma-Terpinene	Monoterpene
24	14.58	0.31%	trans-Sabinene hydrate	Monoterpenol
25	15.31	0.18%	Terpinolene	Monoterpene
26	15.51	0.02%	para-Cymenene	Monoterpene
27	15.60	0.02%	2-Nonanone	Monoterpene Ketone
28	16.03	3.04%	Linalool	Monoterpenol
29	16.16	0.05%	Hotrienol	Monoterpenol
30	16.82	0.01%	Fenchol	Monoterpenol
31	16.97	0.02%	trans-para-Mentha-2,8-dien-1-ol	Monoterpenol
32	17.08	0.11%	cis-para-Menth-2-en-1-ol	Monoterpenol
33	17.65	0.01%	cis-para-Mentha-2,8-dien-1-ol	Monoterpenol
34	17.80	0.15%	trans-Pinocarveol	Monoterpenol
35	17.92	0.06%	trans-para-Menth-2-en-1-ol	Monoterpenol

ESSENTIAL VALIDATION SERVICES | 747 SW 2ND AVE GAINESVILLE, FLORIDA 32601 | 317-361-5044

- Essential Oil testing is performed by using qualitative GC-MS. Method: SOP.T.01 Client Method
 - This report may not be published without the consent of Essential Validation Services.
 - Chromatograph image may be requested
 - This report is valid for 1 year from the analyzed date

Client



Source

Bay Laurel (*Laurus nobilis L.*)

CR-59037

Number	RT	Area %	Compound Name	Chemical Family
36	18.409	0.02%	Nerol oxide	Monoterpenol
37	18.62	0.07%	beta-Pinene oxide	Monoterpene Ether
38	18.79	0.04%	Pinocarvone	Monoterpene Ketone
39	19.20	0.36%	delta-Terpineol	Monoterpenol
40	19.68	2.28%	Terpinen-4-ol	Monoterpenol
41	19.90	0.01%	Cryptone	Monoterpene Ketone
42	20.00	0.09%	para-Cymen-8-ol	Monoterpenol
43	20.36	1.37%	alpha-Terpineol	Monoterpenol
44	21.02	0.04%	trans-Piperitol	Monoterpenol
45	21.47	0.02%	trans-Carveol	Monoterpenol
46	21.76	0.07%	Nerol	Monoterpenol
47	21.93	0.02%	cis-para-Mentha-1(7),8-dien-2-ol	Monoterpenol
48	22.46	0.01%	Cuminal	Monoterpene Aldehyde
49	22.56	0.02%	Carvone	Monoterpene Ketone
50	22.96	0.17%	Linalyl acetate	Monoterpene Ester
51	23.81	0.11%	cis-Verbenyl acetate	Monoterpene Ester
52	24.42	0.30%	Bornyl acetate	Monoterpene Ester
53	24.65	0.04%	cis-Sabinyl acetate	Monoterpene Ester
54	24.87	0.12%	2-Undecanone	Aliphatic Ketone
55	25.72	0.90%	delta-Terpinyl acetate	Monoterpene Ester
56	27.23	13.20%	alpha-Terpinyl acetate	Monoterpene Ester
57	27.38	0.84%	Eugenol	Phenylpropanoid
58	27.76	0.24%	Neryl acetate	Monoterpene Ester
59	28.14	0.11%	alpha-Ylangene	Sesquiterpene
60	28.41	0.02%	alpha-Copaene	Sesquiterpene
61	28.61	0.04%	Geranyl acetate	Monoterpene Ester
62	28.73	0.03%	beta-Bourbonene	Sesquiterpene
63	29.02	0.37%	beta-Elemene	Sesquiterpene
64	29.50	1.37%	Methyl eugenol	Phenylpropanoid
65	29.64	0.01%	Tetradecane	Alkane
66	30.22	0.39%	cis-Caryophyllene	Sesquiterpene
67	30.36	0.04%	beta-Caryophyllene	Sesquiterpene
68	30.89	0.05%	Aromadendrene	Sesquiterpene
69	31.17	0.04%	6,9-Guaiadiene	Sesquiterpene
70	31.30	0.06%	(E)-Cinnamyl acetate	Phenylpropanoid Ester
71	31.46	0.06%	beta-Copaene	Sesquiterpene

ESSENTIAL VALIDATION SERVICES | 747 SW 2ND AVE GAINESVILLE, FLORIDA 32601 | 317-361-5044

- Essential Oil testing is performed by using qualitative GC-MS. Method: SOP.T.01 Client Method
 - This report may not be published without the consent of Essential Validation Services.
 - Chromatograph image may be requested
 - This report is valid for 1 year from the analyzed date

