



316 Old Hickory Blvd East, Madison, TN 37115

tel (615)612-4270 fax (615)860-9171

orderdesk@naturesgift.com

Healing Body, Mind and Spirit with Pure Essential Oils

Since 1995

www.naturesgift.com

Thyme Thujanol

Thymus vulgaris ct thujanol

Batch No. FR-59018

France

Monoterpenes	34.62%
γ terpinene	9.18
myrcene	6.27
para cymene	5.11
α terpinene	4.47
sabinene	3.43
limonene	2.16
terpinolene	1.52
α pinene	1.09
α thujene	0.54
β pinene	0.29
camphene	0.20
hashishene	0.13
α phellandrene	0.12
δ 3 carene	0.02
thuja-2,4(10)-diene	0.02
(E) β ocimene	0.02
para-cymenene	0.02
tricyclene	0.01
pseudolimonene	0.01
(Z) β ocimene	0.01

Aldehydes	0.01%
(E) isocitral	0.01

Monoterpenols	57.85%
(E) sabinene hydrate	30.46
terpinen-4-ol	12.86
linalool	6.29
thymol	3.79
α terpineol	1.86
(Z) para-menth-2-en-1-ol	1.04
carvacrol	0.52
cis-piperitol	0.30
trans-piperitol	0.25
borneol	0.20
para-cymen-8-ol	0.10
trans-carveol	0.06
(E) pinocarveol	0.04
santolina alcohol	0.03
hotrienol	0.02
(Z)-para-mentha-1(7),8-dien-2-ol	0.02
para-mentha-1,5-dien-8-ol	0.01

Ethers	0.8%
1,8 cineole	0.33
caryophyllene oxyde	0.21
β pinene oxide	0.14
(E) limonene oxide	0.06
cis-limonene oxide	0.04
methyl thymol	0.02

Sesquiterpenes	2.52%
β caryophyllene	2.22
germacrene D	0.11
α humulene	0.07
bicyclgermacrene	0.07
δ elemene	0.05
β bourbonene	0.05
δ cadinene	0.04
α ylangene	0.01
(Z) caryophyllene	0.01
β copaene	0.01
allo-aromadendrene	0.01
β bisabolene	0.01
γ cadinene	0.01

Sesquiterpenols	0.02%
germacrene D-4-ol	0.02

Esters	1.18%
linalyl acetate	0.57
linalool formate	0.31
myrtenyl acetate	0.30
ethyl 2-methylbutyrate	0.15
α terpinyl acetate	0.12
geranyl acetate	0.06
bornyl acetate	0.04
geranyl propionate	0.03
(Z) 3-hexenyl isovalerate	0.02
geranyl butyrate	0.02
ethyl isovalerate	0.01
prenyl isobutyrate	0.01
1-octenyl-3 acetate	0.01

Raw Material: *Thymus vulgaris ct thujanol*

Production Steam Dist., France, flowering tops

Date of Analysis: 2/13/2020



316 Old Hickory Blvd East, Madison, TN 37115

tel (615)612-4270 fax (615)860-9171

orderdesk@naturesgift.com

Healing Body, Mind and Spirit with Pure Essential Oils

Since 1995

www.naturesgift.com

Phenols 0.16%

methyl carvacrol 0.16

Other 0.59%

1-octen-3-ol 0.51

3-octanol 0.04

(Z) hex-3-en-1-ol 0.02

1 hexanol 0.01

1-nonanol 0.01

Ketones 0.53%

camphor 0.18

(E) dihydrocarvone 0.10

isopiperitenone 0.09



carvone 0.06

α thujone 0.04

octanone 3 0.03

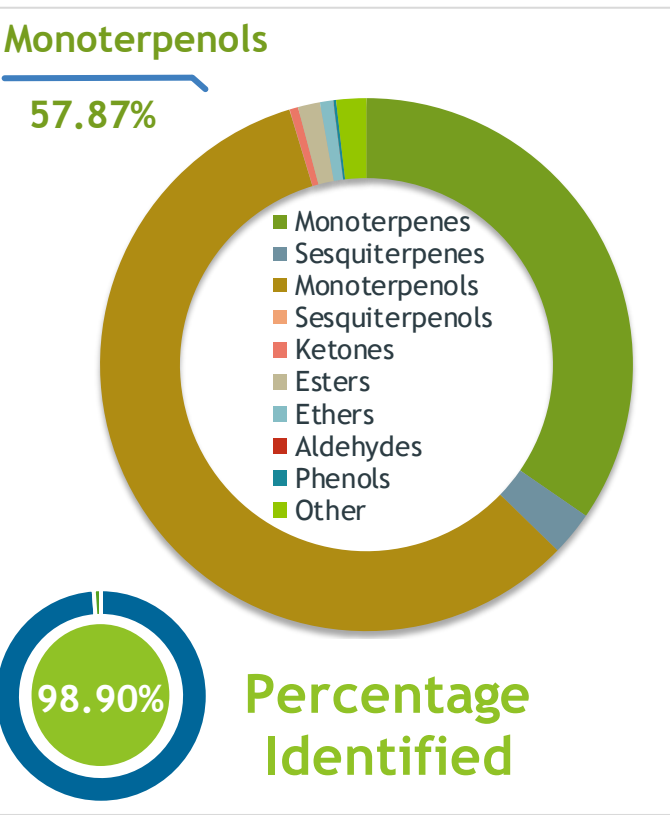
trans-para-mentha-2,8-dien-1-ol 0.02

pinocarvone 0.01

Client  **Source** 

Thyme (Thujanol) (Thymus vulgaris)
FR-59018

Sample Thyme (Thujanol) (Thymus vulgaris)
Batch #:..... FR-59018
Type:..... Essential Oil
CAS Number:... 8007-46-3
Nature's Gift



Client  **Website** 

Primary
30.46% trans-Sabinene hydrate
12.86% Terpinen-4-ol
9.18% gamma-Terpinene

Result 

Conclusion
No adulterants, Diluents, or contaminants were detected via this method. This oil meets the expected profile for genuine Essential Oil of Thyme (Thujanol) (Thymus vulgaris)
Internal Number: | EVS-3563


Essential Validation Services
747 SW 2nd Ave IMB 12 Suite 306
Gainesville, FL 32601
317.361.5044 |
<https://essentialvalidationservices.com/>
adam@essentialvalidationservices.com


Monoterpenes	34.49%	34.49%
Sesquiterpenes	2.67%	2.67%
Monoterpenols	57.87%	57.87%
Sesquiterpenols	0.02%	0.02%
Ketones	0.51%	0.51%
Esters	1.34%	1.34%
Ethers	0.80%	0.80%
Aldehydes	0.01%	0.01%
Phenols	0.16%	0.16%
Other	1.82%	1.82%

ESSENTIAL VALIDATION SERVICES | 747 SW 2ND AVE GAINESVILLE, FLORIDA 32601 | 317-361-5044

Client



Source

Thyme (Thujanol) (*Thymus vulgaris*)

FR-59018

Total Percentage		98.90%		
Number	RT	Area %	Compound Name	Chemical Family
1	4.02	0.15%	Ethyl 2-methylbutyrate	Aliphatic Ester
2	5.99	0.01%	Ethyl isovalerate	Aliphatic Ester
3	6.03	0.02%	cis-Hex-3-en-1-ol	Aliphatic Alcohol
4	6.48	0.01%	1-Hexanol	Aliphatic Alcohol
5	8.21	0.13%	Hashishene	Monoterpene
6	8.30	0.01%	Tricyclene	Monoterpene
7	8.46	0.54%	alpha-Thujene	Monoterpene
8	8.73	1.09%	alpha-Pinene	Monoterpene
9	9.14	0.02%	Thuja-2,4(10)-diene	Monoterpene
10	9.36	0.20%	Camphene	Monoterpene
11	10.33	3.43%	Sabinene	Monoterpene
12	10.50	0.29%	beta-Pinene	Monoterpene
13	10.68	0.51%	1-Octen-3-ol	Aliphatic Alcohol
14	10.90	0.03%	Octan-3-one	Aliphatic Ketone
15	11.10	6.27%	Myrcene	Monoterpene
16	11.42	0.04%	3-Octanol	Aliphatic Alcohol
17	11.65	0.01%	Pseudolimonene	Monoterpene
18	11.76	0.12%	alpha-Phellandrene	Monoterpene
19	11.87	0.02%	delta-3-Carene	Monoterpene
20	12.24	4.47%	alpha-Terpinene	Monoterpene
21	12.58	5.11%	para-Cymene	Monoterpene
22	12.79	2.16%	Limonene	Monoterpene
23	12.89	0.33%	1,8-Cineole	Monoterpene Ether
24	13.16	0.01%	(Z)-beta-Ocimene	Monoterpene
25	13.63	0.02%	(E)-beta-Ocimene	Monoterpene
26	13.97	0.03%	Santolina alcohol	Monoterpenol
27	14.15	9.18%	gamma-Terpinene	Monoterpene
28	14.52	0.01%	Prenyl isobutyrate	Aliphatic Ester
29	14.77	30.46%	trans-Sabinene hydrate	Monoterpenol
30	15.38	1.52%	Terpinolene	Monoterpene
31	15.57	0.02%	para-Cymenene	Monoterpene
32	16.10	6.29%	Linalool	Monoterpenol
33	16.23	0.02%	Hotrienol	Monoterpenol
34	16.50	0.01%	1-Octenyl-3 acetate	Monoterpene Ester
35	16.64	0.04%	alpha-Thujone	Monoterpene Ketone

ESSENTIAL VALIDATION SERVICES | 747 SW 2ND AVE GAINESVILLE, FLORIDA 32601 | 317-361-5044

- Essential Oil testing is performed by using qualitative GC-MS. Method: SOP.T.01 Client Method
 - This report may not be published without the consent of Essential Validation Services.
 - Chromatograph image may be requested
 - This report is valid for 1 year from the analyzed date

Client



Source

Thyme (Thujanol) (*Thymus vulgaris*)

FR-59018

Number	RT	Area %	Compound Name	Chemical Family
36	17.03	0.02%	trans-para-Mentha-2,8-dien-1-ol	Monoterpene Ketone
37	17.14	1.04%	cis-para-Menth-2-en-1-ol	Monoterpenol
38	17.73	0.06%	trans-Limonene oxide	Monoterpene Ether
39	17.86	0.04%	trans-Pinocarveol	Monoterpenol
40	18.11	0.18%	Camphor	Monoterpene Ketone
41	18.31	0.04%	cis-Limonene oxide	Monoterpene Ether
42	18.69	0.14%	beta-Pinene oxide	Monoterpene Ether
43	18.85	0.01%	Pinocarvone	Monoterpene Ketone
44	19.16	0.01%	para-Mentha-1,5-dien-8-ol	Monoterpenol
45	19.32	0.20%	Borneol	Monoterpenol
46	19.46	0.01%	1-Nonanol	Fatty alcohol
47	19.54	0.01%	(E)-Isocitral	Monoterpene Aldehyde
48	19.80	12.86%	Terpinen-4-ol	Monoterpenol
49	20.06	0.10%	para-Cymen-8-ol	Monoterpenol
50	20.44	1.86%	alpha-Terpineol	Monoterpenol
51	20.52	0.30%	cis-Piperitol	Monoterpenol
52	20.82	0.10%	trans-Dihydrocarvone	Monoterpene Ketone
53	21.09	0.25%	trans-Piperitol	Monoterpenol
54	21.53	0.06%	trans-Carveol	Monoterpenol
55	21.82	0.31%	Linalool formate	0.00
56	21.99	0.02%	cis-para-Mentha-1(7),8-dien-2-ol	Monoterpenol
57	22.07	0.02%	Methyl thymol	Monoterpene Ether
58	22.14	0.02%	cis-3-Hexenyl isovalerate	Aliphatic Ester
59	22.47	0.16%	Methyl carvacrol	Phenylpropanoid
60	22.62	0.06%	Carvone	Monoterpene Ketone
61	23.02	0.57%	Linalyl acetate	Monoterpene Ester
62	23.75	0.09%	Isopiperitenone	Monoterpene Ketone
63	24.48	0.04%	Bornyl acetate	Monoterpene Ester
64	24.88	3.79%	Thymol	Monoterpenol
65	25.20	0.52%	Carvacrol	Monoterpenol
66	26.61	0.05%	delta-Elemene	Sesquiterpene
67	27.13	0.30%	Myrtenyl acetate	Monoterpene Ester
68	27.24	0.12%	alpha-Terpinyl acetate	Monoterpene Ester
69	28.46	0.01%	alpha-Ylangene	Sesquiterpene
70	28.67	0.06%	Geranyl acetate	Monoterpene Ester
71	28.79	0.05%	beta-Bourbonene	Sesquiterpene

ESSENTIAL VALIDATION SERVICES | 747 SW 2ND AVE GAINESVILLE, FLORIDA 32601 | 317-361-5044

- Essential Oil testing is performed by using qualitative GC-MS. Method: SOP.T.01 Client Method
 - This report may not be published without the consent of Essential Validation Services.
 - Chromatograph image may be requested
 - This report is valid for 1 year from the analyzed date

