

Rosemary ct Verbenone

Rosmarinus officinalis L. ct verbenone



Batch No. IT-59085

Italy

Monoterpenes	66.31%	Monoterpenols	6.99%	Sesquiterpenes	4.87%
α pinene	40.03	borneol	3.09	cis-caryophyllene	4.12
camphene	7.41	linalool	1.62	α humulene	0.50
limonene	5.73	α terpineol	0.78	δ elemene	0.06
β pinene	2.23	terpinen-4-ol	0.63	β bisabolene	0.06
myrcene	2.12	cis-myrtanol	0.17	α copaene	0.04
terpinolene	1.74	geraniol	0.16	δ amorphene	0.04
γ terpinene	1.29	cis-verbenol	0.13	6,9 guaiaadiene	0.03
thuja-2,4(10)-diene	1.26	trans-pinocarveol	0.10	β sessquiphellandrene	0.02
δ 3 carene	1.25	trans-sabinene hydrate	0.06		
para cymene	1.04	para-cymen-8-ol	0.05	Sesquiterpenols	0.19%
α terpinene	0.65	fenchol	0.05	longipinanol	0.18
α phellandrene	0.49	trans-pinene hydrate	0.05	α cadinol	0.01
tricyclene	0.32	camphene hydrate	0.04		
(Z) β ocimene	0.30	trans-carveol	0.04	Ketones	6.69%
(E) β ocimene	0.15	hotrienol	0.02	verbenone	3.29
α thujene	0.12			camphor	2.80
para-cymenene	0.09	Ethers	3.06%	pinocamphone	0.41
alloocimene	0.05	1,8 cineole	3.03	octan-3-one	0.05
sabinene	0.04	humulene epoxide II	0.03	cis-jasmone	0.04
				chrysanthenone	0.03
Aldehydes	0.08%	Esters	10.13%	carvone	0.03
α campholene aldehyde	0.08	bornyl acetate	9.88	pinocarvone	0.02
		cis-verbenyl acetate	0.14	mesityl oxide	0.02
Phenols	0.07%	prenyl benzoate	0.04		
methyl chavicol	0.04	myrtenyl acetate	0.03	Other	0.01%
methyl eugenol	0.03	geranyl acetate	0.03	1-octen-3-ol	0.01
		trans-pinocarvyl acetate	0.01		

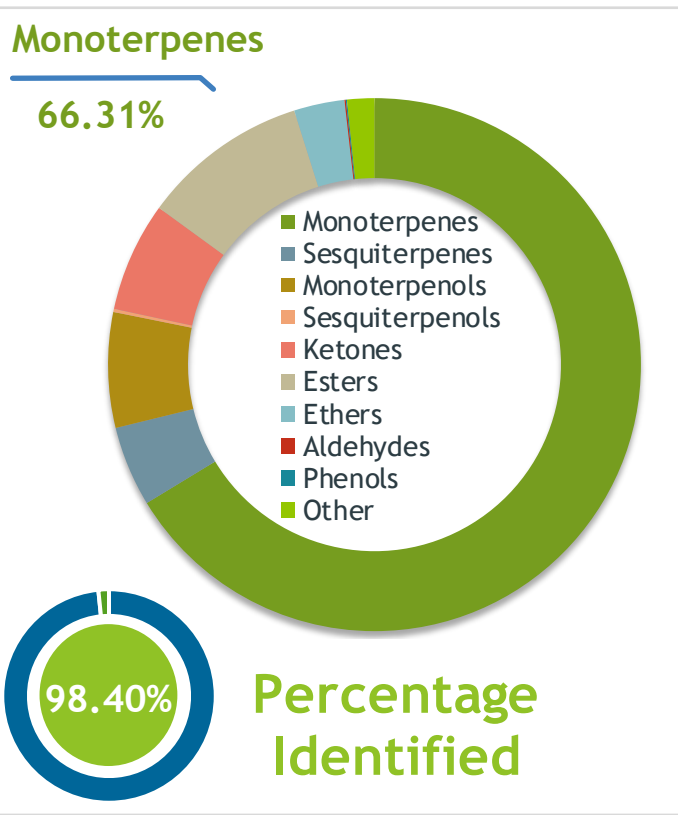
Raw Material: *Rosmarinus officinalis ct verbenone*

Production Steam Dist., leaves & flowers

Client  **Source** 

Rosemary Verbenon (*Rosmarinus officinalis*)
IT-59085

Sample Rosemary Verbenon (*Rosmarinus officinalis*)
Batch #:..... IT-59085
Type:..... Essential Oil
CAS Number:... 8000-25-7
Nature's Gift



Client  **Website** 

Primary

40.03% | **alpha-Pinene**
9.88% | **Bornyl acetate**
7.41% | **Camphene**

Result 

Conclusion No adulterants, diluents, or contaminants were detected via this method. This oil meets the expected profile for genuine Essential Oil of Rosemary Verbenon (*Rosmarinus officinalis*)

Internal Number: | EVS-3808


Essential Validation Services
747 SW 2nd Ave IMB 12 Suite 306
Gainesville, FL 32601
317.361.5044 | <https://essentialvalidationservices.com/>
adam@essentialvalidationservices.com


Monoterpenes	66.31%	66.31%
Sesquiterpenes	4.87%	4.87%
Monoterpenols	6.99%	6.99%
Sesquiterpenols	0.19%	0.19%
Ketones	6.65%	6.65%
Esters	10.12%	10.12%
Ethers	3.07%	3.07%
Aldehydes	0.08%	0.08%
Phenols	0.07%	0.07%
Other	1.65%	1.65%

ESSENTIAL VALIDATION SERVICES | 747 SW 2ND AVE GAINESVILLE, FLORIDA 32601 | 317-361-5044

- Essential Oil testing is performed by using qualitative GC-MS. Method: SOP.T.01 Client Method
- This report may not be published without the consent of Essential Validation Services.
- Chromatograph image may be requested
- This report is valid for 1 year from the analyzed date

Client



Source

Rosemary Verbenon (*Rosmarinus officinalis*)

IT-59085

Total Percentage		98.40%		
Number	RT	Area %	Compound Name	Chemical Family
1	4.38	0.02%	Mesityl oxide	Aliphatic Ketone
2	8.13	0.32%	Tricyclene	Monoterpene
3	8.30	0.12%	alpha-Thujene	Monoterpene
4	8.61	40.03%	alpha-Pinene	Monoterpene
5	9.18	7.41%	Camphene	Monoterpene
6	9.34	1.26%	Thuja-2,4(10)-diene	Monoterpene
7	10.14	0.04%	Sabinene	Monoterpene
8	10.31	2.23%	beta-Pinene	Monoterpene
9	10.50	0.01%	1-Octen-3-ol	Aliphatic Alcohol
10	10.71	0.05%	Octan-3-one	Aliphatic Ketone
11	10.89	2.12%	Myrcene	Monoterpene
12	11.55	0.49%	alpha-Phellandrene	Monoterpene
13	11.66	1.25%	delta-3-Carene	Monoterpene
14	12.03	0.65%	alpha-Terpinene	Monoterpene
15	12.36	1.04%	para-Cymene	Monoterpene
16	12.59	5.73%	Limonene	Monoterpene
17	12.68	3.03%	1,8-Cineole	Monoterpene Ether
18	12.95	0.30%	(Z)-beta-Ocimene	Monoterpene
19	13.42	0.15%	(E)-beta-Ocimene	Monoterpene
20	13.90	1.29%	gamma-Terpinene	Monoterpene
21	14.42	0.06%	trans-Sabinene hydrate	Monoterpenol
22	15.14	1.74%	Terpinolene	Monoterpene
23	15.34	0.09%	para-Cymenene	Monoterpene
24	15.85	1.62%	Linalool	Monoterpenol
25	15.98	0.02%	Hotrienol	Monoterpenol
26	16.64	0.05%	Fenchol	Monoterpenol
27	16.75	0.03%	Chrysanthenone	Monoterpene Ketone
28	16.93	0.05%	trans-Pinene hydrate	Monoterpenol
29	17.00	0.08%	alpha-Campholene aldehyde	Monoterpene Aldehyde
30	17.17	0.05%	Alloocimene	Monoterpene
31	17.61	0.10%	trans-Pinocarveol	Monoterpenol
32	17.72	0.13%	cis-Verbenol	Monoterpenol
33	17.87	2.80%	Camphor	Monoterpene Ketone
34	18.26	0.04%	Camphene hydrate	Monoterpenol
35	18.60	0.02%	Pinocarvone	Monoterpene Ketone

ESSENTIAL VALIDATION SERVICES | 747 SW 2ND AVE GAINESVILLE, FLORIDA 32601 | 317-361-5044

- Essential Oil testing is performed by using qualitative GC-MS. Method: SOP.T.01 Client Method
 - This report may not be published without the consent of Essential Validation Services.
 - Chromatograph image may be requested
 - This report is valid for 1 year from the analyzed date

Client



Source

Rosemary Verbena (*Rosmarinus officinalis*)

IT-59085

Number	RT	Area %	Compound Name	Chemical Family
36	19.074	3.09%	Borneol	Monoterpene Ketone
37	19.22	0.41%	Pinocamphone	Monoterpene Ketone
38	19.49	0.63%	Terpinen-4-ol	Monoterpenol
39	19.81	0.05%	para-Cymen-8-ol	Monoterpenol
40	20.18	0.78%	alpha-Terpineol	Monoterpenol
41	20.33	0.04%	Methyl chavicol	Phenylpropanoid
42	20.68	3.29%	Verbenone	Monoterpene Ketone
43	21.29	0.04%	trans-Carveol	Monoterpenol
44	22.36	0.03%	Carvone	Monoterpene Ketone
45	22.49	0.17%	cis-Myrtanol	Monoterpenol
46	22.78	0.16%	Geraniol	Monoterpenol
47	24.10	0.14%	cis-Verbenyl acetate	Monoterpene Ester
48	24.25	9.88%	Bornyl acetate	Monoterpene Ester
49	25.23	0.01%	trans-Pinocarvyl acetate	Monoterpene Ether
50	25.94	0.03%	Myrtenyl acetate	Monoterpene Ester
51	26.39	0.06%	delta-Elemene	Sesquiterpene
52	28.20	0.04%	alpha-Copaene	Sesquiterpene
53	28.41	0.03%	Geranyl acetate	Monoterpene Ester
54	28.89	0.04%	cis-Jasmone	Jasmonate
55	29.29	0.03%	Methyl eugenol	Phenylpropanoid
56	30.02	4.12%	cis-Caryophyllene	Sesquiterpene
57	31.47	0.50%	alpha-Humulene	Sesquiterpene
58	32.33	0.03%	6,9-Guaiadiene	Sesquiterpene
59	32.90	0.04%	Prenyl benzoate	Monoterpene Ester
60	33.72	0.06%	beta-Bisabolene	Sesquiterpene
61	34.09	0.04%	delta-Amorphene	Sesquiterpene
62	34.32	0.02%	beta-Sesquiphellandrene	Sesquiterpene
63	36.45	0.18%	Longipinanol	Sesquiterpenol
64	37.52	0.03%	Humulene epoxide II	Sesquiterpene Ether
65	39.27	0.01%	alpha-Cadinol	Sesquiterpenol

ESSENTIAL VALIDATION SERVICES | 747 SW 2ND AVE GAINESVILLE, FLORIDA 32601 | 317-361-5044

- Essential Oil testing is performed by using qualitative GC-MS. Method: SOP.T.01 Client Method
- This report may not be published without the consent of Essential Validation Services.
- Chromatograph image may be requested
- This report is valid for 1 year from the analyzed date