



316 Old Hickory Blvd East, Madison, TN 37115

tel (615)612-4270 fax (615)860-9171

sold@naturesgift.com

Healing Body, Mind and Spirit with Pure Essential Oils

Since 1995

www.naturesgift.com

Niaouli

Melaleuca quinquenervia

Batch #MA-59156

Madagascar

Monoterpenes 17.83%

α pinene	8.72
limonene	3.30
β pinene	2.46
myrcene	1.07
para cymene	0.87
γ terpinene	0.56
terpinolene	0.27
2 carene	0.19
α thujene	0.12
camphene	0.08
(E) β ocimene	0.06
α phellandrene	0.04
pseudolimonene	0.04
(Z) β ocimene	0.02
α fenchene	0.02
para cymenene	0.01

Esters 1.87%

α terpinyl acetate	1.75
δ terpinyl acetate	0.04
methyl benzoate	0.03
ethyl 2-methylbutyrate	0.02
geranyl acetate	0.03

Ketones 0.03%

6-methyl-5-hepten-2-one	0.01
geranyl acetone	0.02

Monoterpenols 7.27%

α terpinenol	5.91
terpinen-4-ol	0.72
linalool	0.21
δ terpineol	0.16
isopulegol	0.08
citronellol	0.07
fenchol	0.04
geraniol	0.04
para cymen-8-ol	0.02
trans pinocarveol	0.01
camphene hydrate	0.01

Sesquiterpenes 6.08%

β caryophyllene	2.50
viridiflorene	1.09
9-epi (E) caryophyllene	0.43
α humulene	0.41
β selinene	0.36
δ cadinene	0.23
α selinene	0.22
γ cadinene	0.19
α gurjunene	0.15
aromadendrene	0.14
α copaene	0.11
γ selinene	0.07
α muurolene	0.06
γ muurolene	0.03
α guaiene	0.02
β bisabolene	0.02
α cadinene	0.02
isolekene	0.01
(E,E) α farnesene	0.01
trans calamenene	0.01

Sesquiterpenols 17.18%

(E)-nerolidol	8.46
viridiflorol	7.20
ledol	0.87
palustrol	0.21
τ cadinol	0.09
globulol	0.08
gleenol	0.01
1,10-di-epi cubenol	0.02
rosifoliol	0.03
γ eudesmol	0.03
β eudesmol	0.05
α cadinol	0.10
bulnesol	0.03

Ethers 49.07%

1,8-cineole	48.67
caryophyllene oxide	0.32
humulene epoxide II	0.05
italicene epoxide	0.02
cis rose oxide	0.01

Phenols 0.17%

benzaldehyde	0.14
eugenol	0.03

Raw Material: leaves

Production Method: Steam distillation

Date of Analysis: 2/24/2021

Client



Source



Niaouli (*Melaleuca quinquenervia*)
MA-59156

Sample

Niaouli (*Melaleuca quinquenervia*)
Batch #:..... MA-59156
Type:..... Essential Oil
CAS Number:... 8014-68-4
Nature's Gift

Client



Website

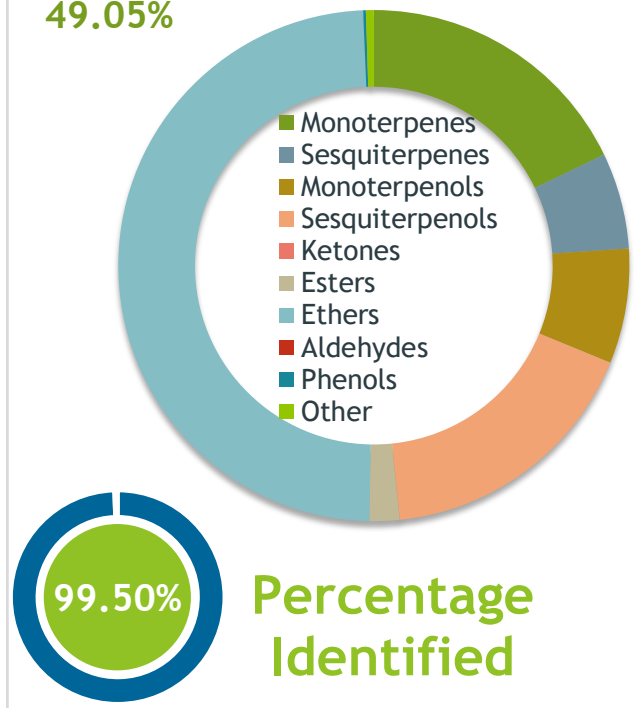


Primary

48.67% | **1,8-Cineole**
8.72% | **alpha-Pinene**
8.46% | **(E)-Nerolidol**

Ethers

49.05%



Result



Conclusion

No adulterants, diluents, or contaminants were detected via this method. This oil meets the expected profile for genuine Essential Oil of Niaouli (*Melaleuca quinquenervia*)

Internal Number: | EVS-4247



Essential Validation Services

747 SW 2nd Ave IMB 12 Suite 306
Gainesville, FL 32601

317.361.5044 | <https://essentialvalidationservices.com/>

Alan Christen

Monoterpenes	17.85%	17.85%
Sesquiterpenes	6.08%	6.08%
Monoterpenols	7.27%	7.27%
Sesquiterpenols	17.18%	17.18%
Ketones	0.01%	0.01%
Esters	1.89%	1.89%
Ethers	49.05%	49.05%
Aldehydes	0.00%	0.00%
Phenols	0.17%	0.17%
Other	0.50%	0.50%

ESSENTIAL VALIDATION SERVICES | 747 SW 2ND AVE GAINESVILLE, FLORIDA 32601 | 317-361-5044

Client



Source

Niaouli (*Melaleuca quinquenervia*)

MA-59156

Total Percentage		99.50%		
Number	RT	Area %	Compound Name	Chemical Family
1	3.79	0.02%	Ethyl 2-methylbutyrate	Aliphatic Ester
2	8.03	0.12%	alpha-Thujene	Monoterpene
3	8.30	8.72%	alpha-Pinene	Monoterpene
4	8.83	0.02%	alpha-Fenchene	Monoterpene
5	8.89	0.08%	Camphene	Monoterpene
6	9.38	0.14%	Benzaldehyde	Simple Phenolic
7	10.01	2.46%	beta-Pinene	Monoterpene
8	10.40	0.01%	6-Methyl-5-hepten-2-one	Aliphatic Ketone
9	10.60	1.07%	Myrcene	Monoterpene
10	11.14	0.04%	Pseudolimonene	Monoterpene
11	11.25	0.04%	alpha-Phellandrene	Monoterpene
12	11.72	0.19%	2-Carene	Monoterpene
13	12.07	0.87%	para-Cymene	Monoterpene
14	12.28	3.30%	Limonene	Monoterpene
15	12.47	48.67%	1,8-Cineole	Monoterpene Ether
16	12.65	0.02%	(Z)-beta-Ocimene	Monoterpene
17	13.10	0.06%	(E)-beta-Ocimene	Monoterpene
18	13.58	0.56%	gamma-Terpinene	Monoterpene
19	14.80	0.27%	Terpinolene	Monoterpene
20	15.01	0.01%	para-Cymenene	Monoterpene
21	15.18	0.03%	Methyl benzoate	Phenolic Ester
22	15.53	0.21%	Linalool	Monoterpenol
23	15.96	0.01%	cis-Rose oxide	Monoterpene Ether
24	16.32	0.04%	Fenchol	Monoterpenol
25	17.28	0.01%	trans-Pinocarveol	Monoterpenol
26	17.65	0.08%	Isopulegol	Monoterpenol
27	17.91	0.01%	Camphene hydrate	Monoterpenol
28	18.69	0.16%	delta-Terpineol	Monoterpenol
29	19.14	0.72%	Terpinen-4-ol	Monoterpenol
30	19.50	0.02%	para-Cymen-8-ol	Monoterpenol
31	19.89	5.91%	alpha-Terpineol	Monoterpenol
32	21.39	0.07%	Citronellol	Monoterpenol
33	22.44	0.04%	Geraniol	Monoterpenol
34	25.16	0.04%	delta-Terpinyl acetate	Monoterpene Ester
35	26.62	1.75%	alpha-Terpinyl acetate	Monoterpene Ester

Client



Source

*Niaouli (Melaleuca quinquenervia)*

MA-59156

Number	RT	Area %	Compound Name	Chemical Family
36	26.818	0.03%	Eugenol	Monoterpene Ester
37	27.60	0.01%	Isolatedene	Sesquiterpene
38	27.82	0.11%	alpha-Copaene	Sesquiterpene
39	28.05	0.03%	Geranyl acetate	Monoterpene Ester
40	29.12	0.15%	alpha-Gurjunene	Sesquiterpene
41	29.62	2.50%	beta-Caryophyllene	Sesquiterpene
42	30.46	0.14%	Aromadendrene	Sesquiterpene
43	30.54	0.02%	alpha-Guaiene	Sesquiterpene
44	30.90	0.02%	Geranylacetone	Monoterpene
45	31.08	0.41%	alpha-Humulene	Sesquiterpene
46	31.27	0.43%	9-epi-(E)-Caryophyllene	Sesquiterpene
47	31.86	0.07%	gamma-Selinene	Sesquiterpene
48	31.94	0.03%	gamma-Muurolene	Sesquiterpene
49	32.44	0.36%	beta-Selinene	Sesquiterpene
50	32.58	1.09%	Viridiflorene	Sesquiterpene
51	32.75	0.22%	alpha-Selinene	Sesquiterpene
52	32.92	0.06%	alpha-Muurolene	Sesquiterpene
53	33.25	0.01%	(E,E)-alpha-Farnesene	Sesquiterpene
54	33.33	0.02%	beta-Bisabolene	Sesquiterpene
55	33.46	0.19%	gamma-Cadinene	Sesquiterpene
56	33.70	0.23%	delta-Cadinene	Sesquiterpene
57	33.79	0.01%	trans-Calamenene	Sesquiterpene
58	34.39	0.02%	alpha-Cadinene	Sesquiterpene
59	34.88	0.02%	Italicene epoxide	Sesquiterpene Ester
60	35.51	8.46%	(E)-Nerolidol	Sesquiterpenol
61	35.64	0.21%	Palustrol	Sesquiterpenol
62	36.07	0.32%	Caryophyllene oxide	Sesquiterpene Ether
63	36.25	0.08%	Globulol	Sesquiterpenol
64	36.40	0.01%	Gleenol	Sesquiterpenol
65	36.62	7.20%	Viridiflorol	Sesquiterpenol
66	36.97	0.87%	Ledol	Sesquiterpenol
67	37.14	0.05%	Humulene epoxide II	Sesquiterpene Ether
68	37.43	0.02%	1,10-di-epi-Cubenol	Sesquiterpenol
69	37.71	0.03%	Rosifoliol	Sesquiterpenol
70	38.02	0.03%	gamma-Eudesmol	Sesquiterpenol
71	38.41	0.09%	T-Cadinol	Sesquiterpenol

