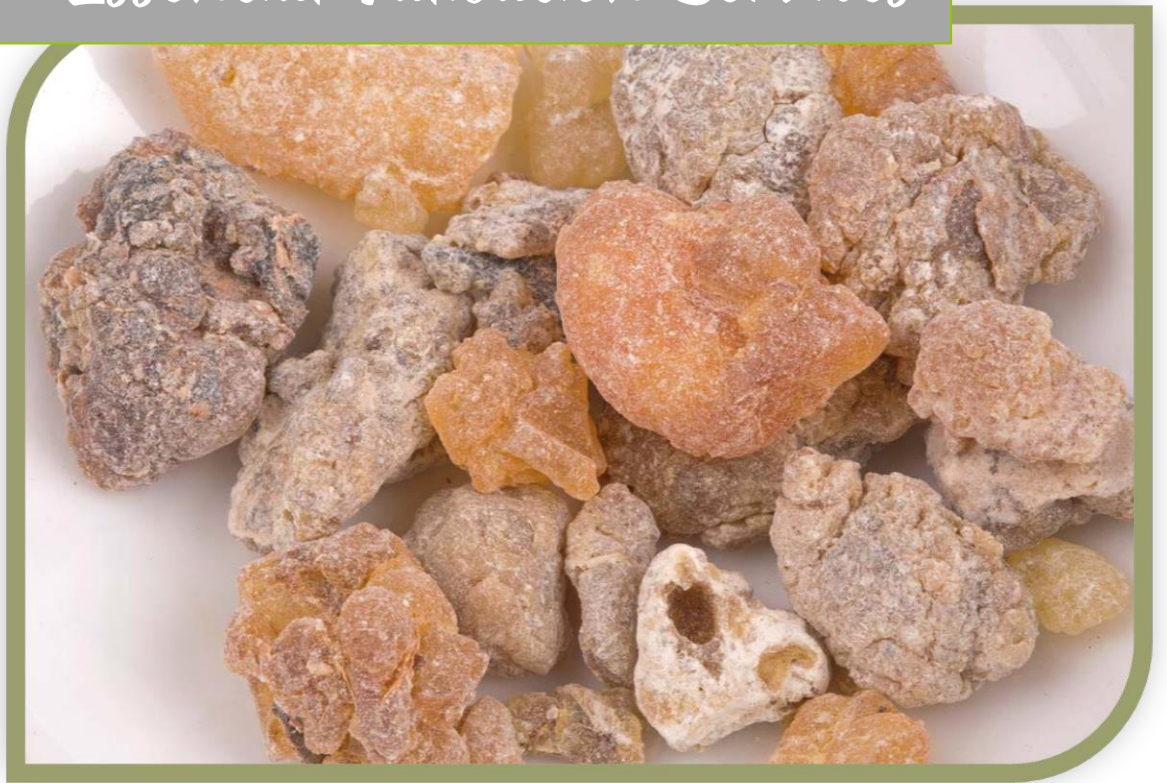




Essential Validation Services



Sample:

Client: | Be Kind Botanicals
Sample: | Myrrh (Commiphora myrrha)
Batch # | CM1122
CAS Number | 8016-37-3
Type: | Essential Oil

Conclusion:

- No adulterants, diluents, or contaminants were detected via this method.
- This oil meets the expected profile for genuine essential oil of Myrrh (Commiphora myrrha).



X 

Validated By:

Essential Validation Services

747 SW 2nd Ave, Gainesville, FL 32601

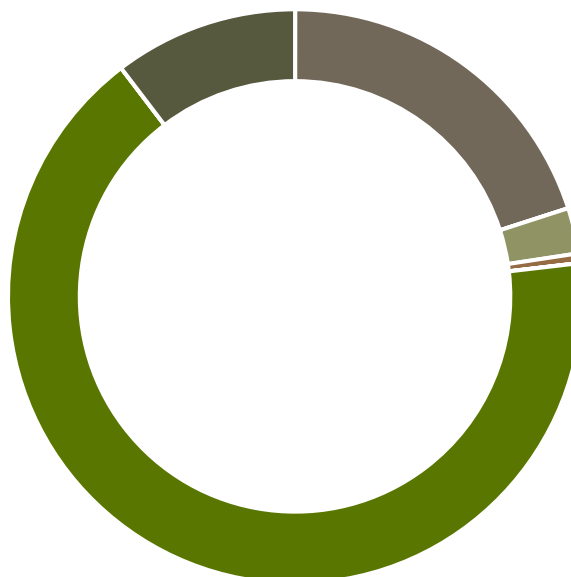
Phone: 317-361-5044 E-mail: Adam@essentialvalidationservices.com

Summary of Analyses

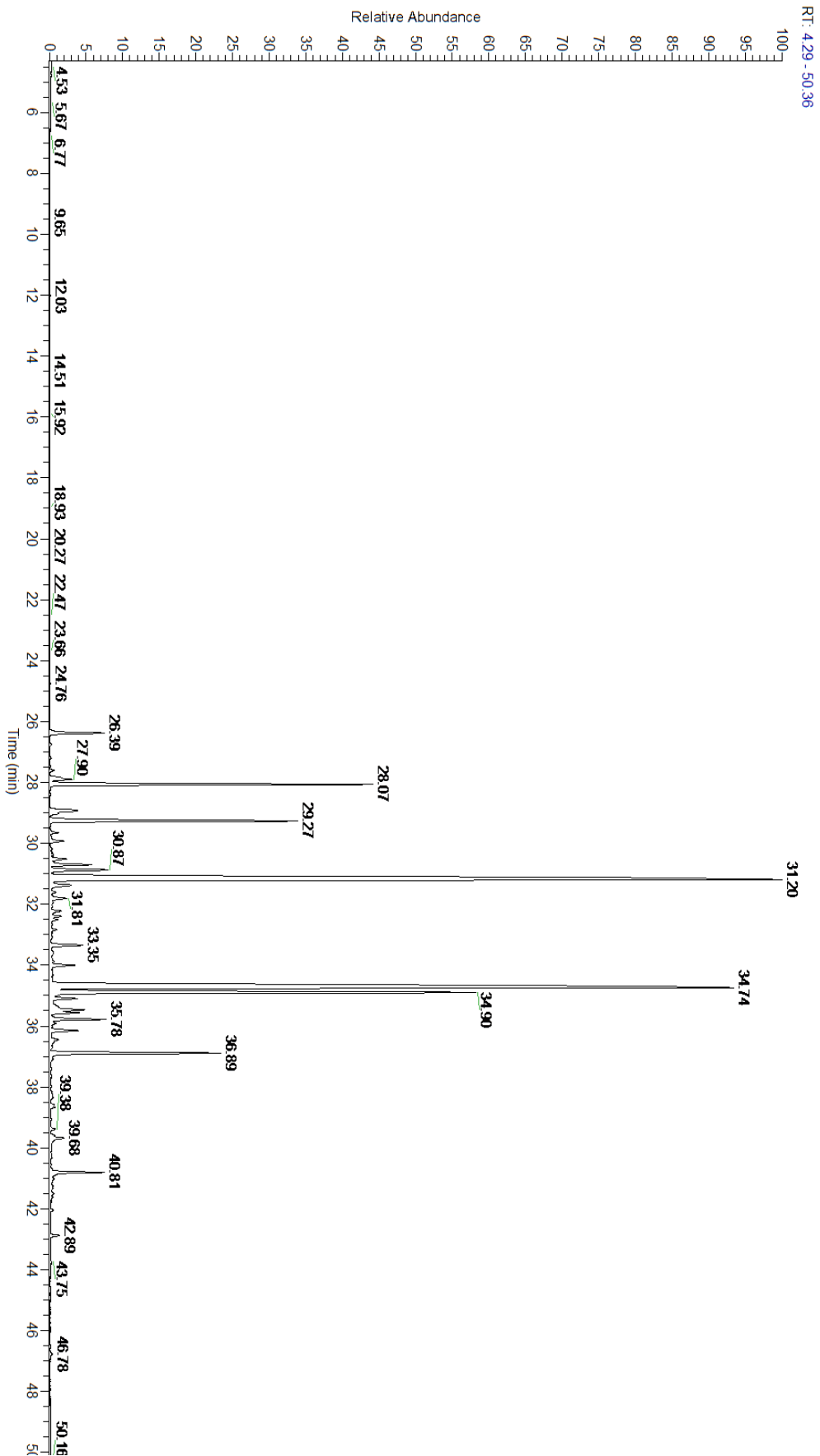
A fresh sample of Myrrh (Commiphora myrrha) Essential Oil (10 uL in .5to.5 mL Hexane + ETOH) was prepared and analyzed via split injection GC/EI-MS.

Main Compounds	Percentages
Curzerene	29.73%
Furanoeudesma-1,3-diene	26.75%
Lindestrene	9.97%
beta-Elemene	6.82%
gamma-Elemene	5.48%
UK Myrrh	3.68%
beta-Selinene	1.23%
delta-Elemene	1.17%
Bulnesol	1.09%
Germacrene D	0.94%
Atractylone	0.93%
Sativene	0.86%
Spathulenol	0.71%

Monoterpenes	Sesquiterpenes	Monoterpenols	Sesquiterpenols	Ketones
0.01%	20.02%	0.00%	2.57%	0.54%
Esters	Ethers	Aldehydes	Phenols	Other
0.01%	66.49%	0.00%	0.00%	10.36%



- Monoterpenes
- Sesquiterpenes
- Monoterpenols
- Sesquiterpenols
- Ketones
- Esters
- Ethers
- Phenols
- Other



Total Percentage		89.64%			
Peak Number	RT	Area %	Compound Name	RI	Chemical Family
1	12.03	0.01%	alpha-Pinene	936.10	Monoterpene
2	24.76	0.01%	Bornyl acetate	1288.29	Monoterpene Ester
3	26.39	1.17%	delta-Elemene	1335.83	Sesquiterpene
4	26.76	0.04%	alpha-Cubebene	1355.71	Sesquiterpene
5	27.20	0.02%	Cyclosativene	1370.50	Sesquiterpene
6	27.47	0.01%	alpha-Ylangene	1371.33	Sesquiterpene
7	27.61	0.09%	alpha-Copaene	1379.00	Sesquiterpene
8	27.90	0.67%	beta-Bourbonene	1388.70	Sesquiterpene
9	28.07	6.82%	beta-Elemene	1389.20	Sesquiterpene
10	28.94	0.86%	Sativene	1395.00	Sesquiterpene
11	29.03	0.17%	beta-Caryophyllene	1427.14	Sesquiterpene
12	29.27	5.48%	gamma-Elemene	1434.00	Sesquiterpene
13	29.27	Co-Eluting	beta-Copaene	1445.00	Sesquiterpene
14	29.66	0.19%	6,9-Guaiadiene	1446.00	Sesquiterpene
15	29.82	0.01%	cis-Muurolo-3,5-diene	1456.75	Sesquiterpene
16	29.93	0.34%	alpha-Humulene	1461.43	Sesquiterpene
17	30.19	0.06%	trans-Cadina-1,4-diene	1462.50	Sesquiterpene
18	30.31	0.04%	gamma-Gurjunene	1473.17	Sesquiterpene
19	30.52	0.42%	gamma-Muurolo-3,5-diene	1478.86	Sesquiterpene
20	30.71	0.94%	Germacrene D	1484.71	Sesquiterpene
21	30.87	1.23%	beta-Selinene	1487.57	Sesquiterpene
22	31.20	29.73%	Curzerene	1497.00	Sesquiterpene Ether
23	31.37	0.59%	alpha-Muurolo-3,5-diene	1500.25	Sesquiterpene
24	31.61	0.11%	gamma-Cadinene	1515.29	Sesquiterpene
25	31.81	0.39%	delta-Cadinene	1524.14	Sesquiterpene
26	32.22	0.25%	Elemol	1538.00	Sesquiterpenol
27	32.40	0.22%	Selina-3,7(11)-diene	1544.50	Sesquiterpene
28	32.51	0.15%	Germacrene B	1557.71	Sesquiterpene
29	33.35	0.71%	Spathulenol	1587.00	Sesquiterpenol
30	33.55	0.04%	Caryophyllene oxide	1594.86	Sesquiterpene Ether
31	34.01	0.54%	cis-beta-Elemenone	1598.00	Sesquiterpene Ketone
32	34.74	26.75%	Furanoedesma-1,3-diene	1628.50	Sesquiterpene Ether
33	34.90	9.97%	Lindestrene	1634.00	Sesquiterpene Ether
34	35.10	0.52%	T-Muurolo-3,5-diene	1643.29	Sesquiterpenol
35	35.47	0.93%	Atractylone		
36	35.78	1.09%	Bulnesol	1666.14	Sesquiterpenol
37	36.89	3.68%	UK Myrrh		

ESSENTIAL VALIDATION SERVICES | 747 SW 2ND AVE GAINESVILLE, FLORIDA 32601 | 317-361-5044