



Lavender (Bulgarian)

Lavandula angustifolia

Batch No. #BU-58988

Bulgaria

Monoterpenes	8.62%	Aldehydes	0%	Sesquiterpenes	10.93%
cis- β -ocimene	3.41	cuminal	0.08	(E) β farnesene	5.06
trans- β ocimene	2.29			β caryophyllene	4.75
alloocimene	0.73			germacrene D	0.50
myrcene	0.63	Esters	39.27%	α -trans-bergamotene	0.16
limonene + β phellandrene	0.55	linalyl acetate	31.52	γ cadinene	0.16
α pinene	0.17	lavandulyl acetate	4.53	α cis-bergamotene	0.06
γ terpinene	0.16	1-octenyl-3 acetate	1.04	aromadendrene	0.06
Δ 3 carene	0.12	Hexyl acetate	0.64	7-epi-sesquithujene	0.04
para cymene	0.12	geranyl acetate	0.58	β bisabolene	0.04
camphene	0.1	neryl acetate	0.35	(Z) β farnesene	0.03
α thujene	0.09	bornyl acetate	0.16	epi- β -santalene	0.03
terpinolene	0.07	octan-3-yl acetate	0.14	α copaene	0.02
α phellandrene	0.05	hexyl isobutyrate	0.08	(E,E) α farnesene	0.02
α terpinene	0.04	hexyl propanoate	0.05		
meta-cymene	0.03	hexyl tiglate	0.05	Sesquiterpenols	0.46%
sabinene	0.03	dihydro carveol acetate	0.05	caryophellene oxide	0.37
β pinene	0.03	hexyl 2-methyl butanoate	0.04	t-cadinol	0.09
		isopulegyl acetate	0.04		
Monoterpenols	36.66%	Ethers	0.74%	Other	0.65%
linalol	28.14	1,8 cineole (also known as an Oxide)	0.66	3-octanol	0.34
terpinene-4-ol	5.02	methyl hexyl ether	0.08	1-octen-3-ol	0.27
borneol	0.67			1-hexanol	0.04
cumin alcohol	0.02	Ketones	1.51%		
trans-linaloloxide	0.09	3-octanone	1.11		
linalool cis-oxide	0.22	camphor	0.19		
lavandulol	0.99	cryptone	0.19		
para-cymen-8-ol	0.06	carvone	0.02		
α terpineol	1.31				
trans carveol	0.02				
nerol	0.12				

Raw Material: Bulgarian Lavender

INCI Name: Lavandula angustifolia

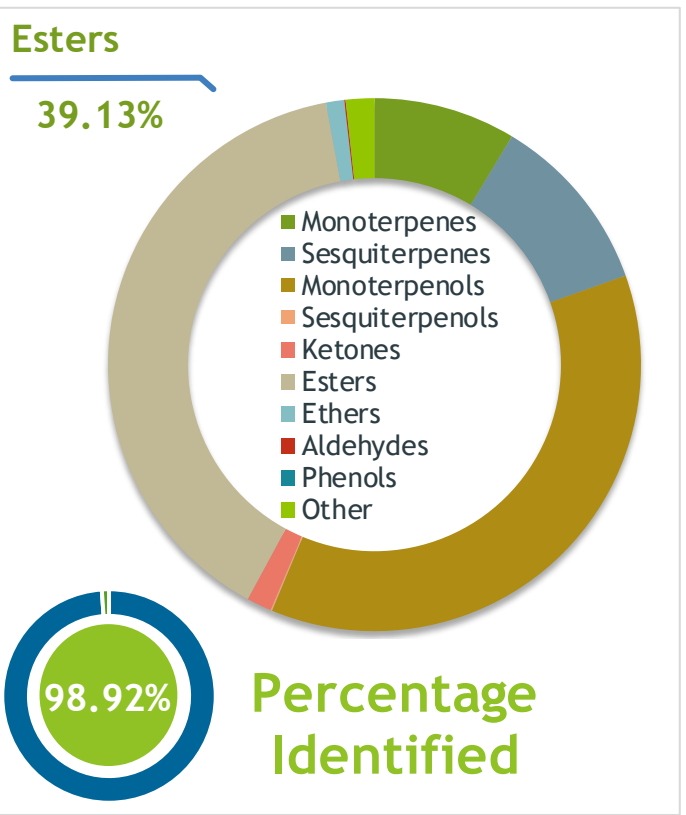
Production Method: steam distillation, flowering tops

Date of analysis: 8/30/2019

Client  **Source** 

Lavender - Bulgaria (*Lavandula angustifolia*)
BU-58988

Sample Lavender - Bulgaria (*Lavandula angustifolia*)
Batch #:..... BU-58988
Type:..... Essential Oil
CAS Number:... 8000-28-0
Nature's Gift



Client  **Website** 

Primary
31.52% | Linalyl acetate
28.14% | Linalool
5.06% | (E)-beta-Farnesene

Result 

Conclusion No adulterants, Diluents, or contaminants were detected via this method. This oil meets the expected profile for genuine Essential Oil of Lavender - Bulgaria (*Lavandula angustifolia*)
Internal Number: | EVS-3198


Essential Validation Services
747 SW 2nd Ave IMB 12 Suite 306
Gainesville, FL 32601
317.361.5044 |
<https://essentialvalidation.com/>
adam@essentialvalidation.com


Monoterpenes	8.62%	8.62%
Sesquiterpenes	10.93%	10.93%
Monoterpenols	36.66%	36.66%
Sesquiterpenols		0.09%
Ketones		1.51%
Esters	39.13%	39.13%
Ethers		1.11%
Aldehydes		0.08%
Phenols		0.00%
Other		1.73%

ESSENTIAL VALIDATION SERVICES | 747 SW 2ND AVE GAINESVILLE, FLORIDA 32601 | 317-361-5044

Client



Source

Lavender - Bulgaria (*Lavandula angustifolia*)

BU-58988

Total Percentage		98.92%		
Number	RT	Area %	Compound Name	Chemical Family
1	4.67	0.08%	Methyl hexyl ether	Aliphatic Ether
2	5.89	0.04%	1-Hexanol	Aliphatic Alcohol
3	7.77	0.09%	alpha-Thujene	Monoterpene
4	8.01	0.17%	alpha-Pinene	Monoterpene
5	8.62	0.10%	Camphene	Monoterpene
6	9.57	0.03%	Sabinene	Monoterpene
7	9.73	0.03%	beta-Pinene	Monoterpene
8	9.94	0.27%	1-Octen-3-ol	Aliphatic Alcohol
9	10.14	1.11%	Octan-3-one	Aliphatic Ketone
10	10.33	0.63%	Myrcene	Monoterpene
11	10.66	0.34%	3-Octanol	Aliphatic Alcohol
12	10.97	0.05%	alpha-Phellandrene	Monoterpene
13	11.07	0.12%	delta-3-Carene	Monoterpene
14	11.33	0.64%	Hexyl acetate	Aliphatic Ester
15	11.44	0.04%	alpha-Terpinene	Monoterpene
16	11.57	0.03%	meta-Cymene	Monoterpene
17	11.77	0.12%	para-Cymene	Monoterpene
18	12.00	0.55%	Limonene	Monoterpene
19	12.01	Co-Eluting	beta-Phellandrene	Monoterpene
20	12.08	0.66%	1,8-Cineole	Monoterpene Ether
21	12.39	3.41%	(Z)-beta-Ocimene	Monoterpene
22	12.84	2.29%	(E)-beta-Ocimene	Monoterpene
23	13.30	0.16%	gamma-Terpinene	Monoterpene
24	13.86	0.22%	cis-Linalool oxide (5) (furanoid)	Monoterpenol
25	14.54	0.07%	Terpinolene	Monoterpene
26	14.61	0.09%	trans-Linalool oxide (5) (furanoid)	Monoterpenol
27	15.43	28.14%	Linalool	Monoterpenol
28	15.59	0.05%	Hexyl propanoate	0.00
29	15.72	1.04%	1-Octenyl-3 acetate	Monoterpene Ester
30	16.27	0.14%	Octan-3-yl acetate	Aliphatic Ester
31	16.59	0.73%	Alloocimene	Monoterpene
32	17.26	0.19%	Camphor	Monoterpene Ketone
33	17.54	0.08%	Hexyl isobutyrate	Monoterpene Ester
34	18.25	0.99%	Lavandulol	Monoterpenol
35	18.47	0.67%	Borneol	Monoterpenol

ESSENTIAL VALIDATION SERVICES | 747 SW 2ND AVE GAINESVILLE, FLORIDA 32601 | 317-361-5044

Client



Source



Lavender - Bulgaria (*Lavandula angustifolia*)
BU-58988

Number	RT	Area %	Compound Name	Chemical Family
36	18.929	5.02%	Terpinen-4-ol	Monoterpenol
37	19.12	0.19%	Cryptone	Monoterpene Ketone
38	19.22	0.06%	para-Cymen-8-ol	Monoterpenol
39	19.59	1.31%	alpha-Terpineol	Monoterpenol
40	20.71	0.02%	trans-Carveol	Monoterpenol
41	21.03	0.12%	Nerol	Monoterpenol
42	21.61	0.04%	Hexyl 2-methyl butanoate	0.00
43	21.69	0.08%	Cuminal	Monoterpene Aldehyde
44	21.78	0.02%	Carvone	Monoterpene Ketone
45	22.37	31.52%	Linalyl acetate	Monoterpene Ester
46	23.27	0.04%	Isopulegyl acetate	Monoterpene Ester
47	23.67	0.16%	Bornyl acetate	Monoterpene Ester
48	23.81	4.53%	Lavandulyl acetate	Monoterpene Ester
49	23.98	0.02%	Cumin alcohol	Monoterpenol
50	25.78	0.05%	Hexyl tiglate	Monoterpene Ester
51	26.40	0.05%	22.69 Dihydro carveol acetate<neoiso->	0.00
52	27.06	0.35%	Neryl acetate	Monoterpene Ester
53	27.66	0.02%	alpha-Copaene	Sesquiterpene
54	27.91	0.58%	Geranyl acetate	Monoterpene Ester
55	28.92	0.04%	7-epi-Sesquithujene	Sesquiterpene
56	29.31	0.06%	cis-alpha-Bergamotene	Sesquiterpene
57	29.49	4.75%	beta-Caryophyllene	Sesquiterpene
58	30.15	0.16%	trans-alpha-Bergamotene	Sesquiterpene
59	30.45	0.03%	(Z)-beta-Farnesene	Sesquiterpene
60	30.58	0.06%	Aromadendrene	Sesquiterpene
61	30.69	0.03%	epi-beta-Santalene	Sesquiterpene
62	31.08	5.06%	(E)-beta-Farnesene	Sesquiterpene
63	32.03	0.50%	Germacrene D	Sesquiterpene
64	33.15	0.02%	(E,E)-alpha-Farnesene	Sesquiterpene
65	33.23	0.04%	beta-Bisabolene	Sesquiterpene
66	33.35	0.16%	gamma-Cadinene	Sesquiterpene
67	35.96	0.37%	Caryophyllene oxide	Sesquiterpene Ether
68	38.32	0.09%	T-Cadinol	Sesquiterpenol

ESSENTIAL VALIDATION SERVICES | 747 SW 2ND AVE GAINESVILLE, FLORIDA 32601 | 317-361-5044