



316 Old Hickory Blvd East, Madison, TN 37115

tel (615)612-4270 fax (615)860-9171

sold@naturesgift.com

Balancing Body, Mind and Spirit with Pure Essential Oils

Since 1995

www.naturesgift.com

Lavandin Italian

Lavandin x hybrid

Northern Italy

Batch #IT-58940

| Monoterpenes | 3.97% | Sesquiterpenes | 4.82% | Esters | 41.47% |
|---------------------|-------|----------------------------|-------|--------------------------|--------|
| limonene | 0.72 | (E) caryophyllene | 1.39 | linalyl acetate | 35.69 |
| (Z) β ocimene | 0.67 | (E) β farnesene | 1.21 | lavandulyl acetate | 2.89 |
| myrcene | 0.48 | germacrene D | 0.70 | hexyl acetate | 0.23 |
| α pinene | 0.46 | δ amorphene | 0.24 | hexyl propanoate | 0.12 |
| camphene | 0.31 | β sesquiphellandrene | 0.24 | 1-octen-3-yl acetate | 0.41 |
| β pinene | 0.28 | β bisabolene | 0.21 | hexyl butanoate | 0.40 |
| terpinolene | 0.26 | (E) α bergamotene | 0.15 | hexyl 2-methyl butanoate | 0.09 |
| (E) β ocimene | 0.21 | daucene | 0.13 | hexyl isovalerate | 0.19 |
| γ terpinene | 0.13 | (E,E) α farnesene | 0.13 | hexyl tiglate | 0.16 |
| sabinene | 0.12 | 7-epi-sesquithujene | 0.10 | neryl acetate | 0.18 |
| α thujene | 0.10 | dauca-5,8-diene | 0.09 | geranyl acetate | 0.36 |
| para-cymene | 0.08 | sesquithujene | 0.08 | lavandulyl isobutanoate | 0.09 |
| Δ^3 carene | 0.07 | β bourbonene | 0.06 | neryl propanoate | 0.14 |
| α terpinene | 0.04 | (Z) β farnesene | 0.05 | lavandulyl isovalerate | 0.52 |
| allo-ocimene | 0.04 | α humulene | 0.04 | | |

| Monoterpenols | 37.71% | Sesquiterpenols | 0.51% | Ketones | 5.64% |
|----------------------|--------|----------------------|-------|------------------|-------|
| linalool | 29.63 | α bisabolol | 0.36 | camphor | 5.64 |
| terpinen-4-ol | 3.71 | epi α cadinol | 0.15 | | |
| borneol | 3.34 | | | | |
| α terpineol | 0.64 | | | | |
| (Z) sabinene hydrate | 0.30 | | | | |
| δ terpineol | 0.05 | | | | |
| nerol | 0.04 | | | | |
| | | Ethers | 4.89% | Other | 0.95% |
| | | 1,8 cineole | 4.72 | 1-methoxy-hexane | 0.03 |
| | | (E) linalool oxide | 0.08 | n-hexanol | 0.06 |
| | | caryophyllene oxide | 0.09 | lavandulol | 0.46 |
| | | | | 1-octen-3-ol | 0.40 |

Date of Analysis: 11/8/2018

Analyzed by : Dr. Prabodh Satyal
 Analyzed : 11/8/2018 7:09:24 AM
 Sample Type : Essential Oil
 Sample Name : Lavandula X
 ARC# : 18108SLOE SAP# 0000
 Injection Volume : 0.10
 Data File : C:\Users\user\Desktop\QA Data File\psatyal\Lavandula X APRC Re18108SLOE001.r.gvu

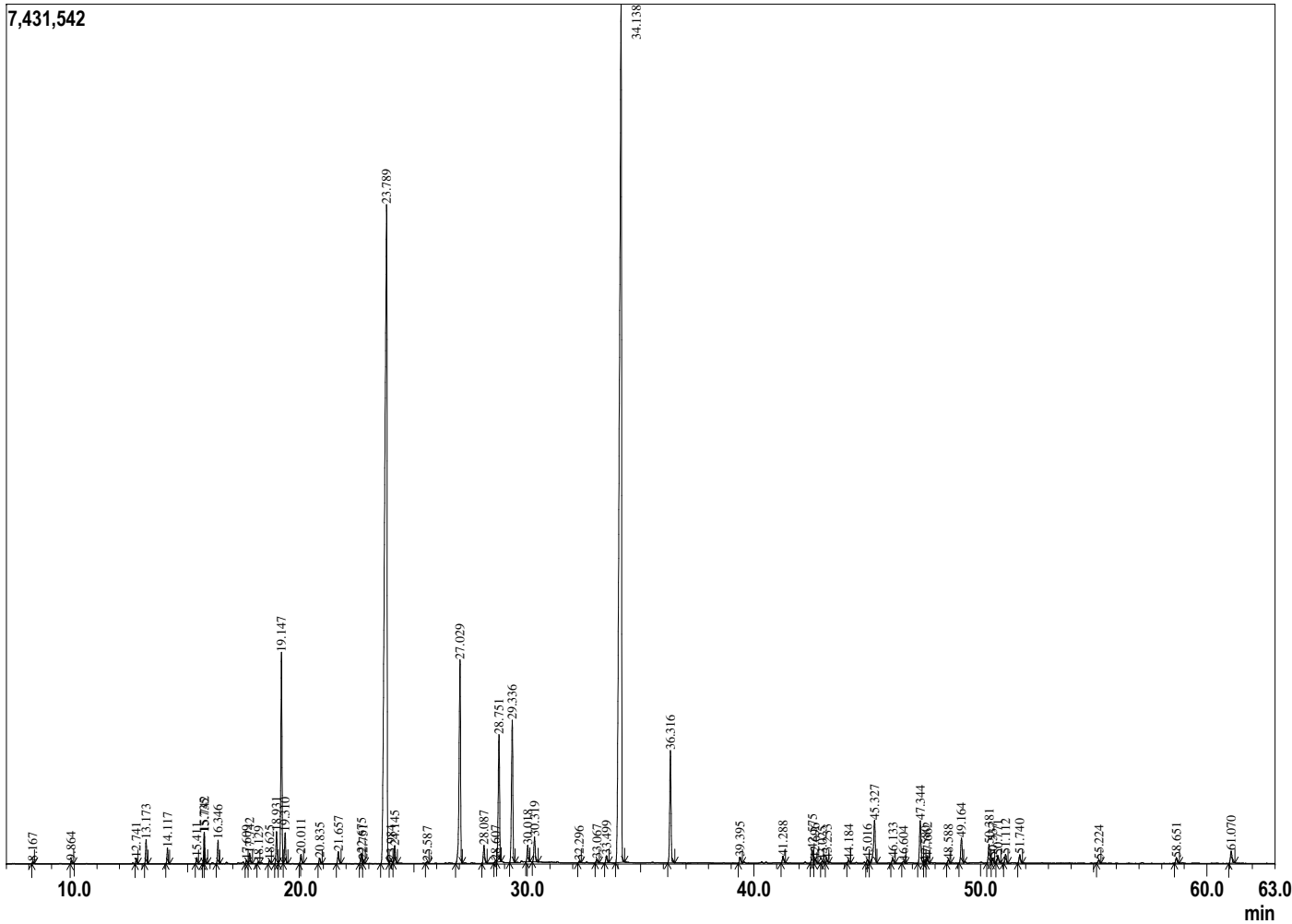
Sample Information



Peak Report TIC

| R.Time | Name | Area% |
|--------|-----------------------------------|--------|
| 8.167 | Hexane, 1-methoxy- | 0.03 |
| 9.864 | Hexanol<n-> | 0.06 |
| 12.741 | Thujene<alpha-> | 0.10 |
| 13.173 | Pinene<alpha-> | 0.46 |
| 14.117 | Camphene | 0.31 |
| 15.411 | Sabinene | 0.12 |
| 15.735 | Pinene <beta-> | 0.28 |
| 15.742 | Octen-3-ol<1-> | 0.40 |
| 16.346 | Myrcene | 0.48 |
| 17.609 | Carene<delta-3-> | 0.07 |
| 17.742 | Hexyl acetate | 0.23 |
| 18.129 | Terpinene<alpha-> | 0.04 |
| 18.625 | Cymene<para-> | 0.08 |
| 18.931 | Limonene | 0.72 |
| 19.147 | Cineole<1,8-> | 4.72 |
| 19.310 | Ocimene<(Z)-beta-> | 0.67 |
| 20.011 | Ocimene<(E)-beta-> | 0.21 |
| 20.835 | Terpinene<gamma-> | 0.13 |
| 21.657 | Sabinene hydrate <cis> | 0.30 |
| 22.675 | Terpinolene | 0.26 |
| 22.751 | Linalool oxide <trans-(furanoid)> | 0.08 |
| 23.789 | Linalool | 29.63 |
| 23.984 | Hexyl propanoate | 0.12 |
| 24.145 | Octen-3-yl acetate<1-> | 0.41 |
| 25.587 | Ocimene<allo-> | 0.04 |
| 27.029 | Camphor | 5.64 |
| 28.087 | Lavandulol | 0.46 |
| 28.607 | Terpineol <delta> | 0.05 |
| 28.751 | Borneol | 3.34 |
| 29.336 | Terpinen-4-ol | 3.71 |
| 30.018 | Hexyl butanoate | 0.40 |
| 30.319 | Terpineol<alpha-> | 0.64 |
| 32.296 | Nerol | 0.04 |
| 33.067 | Hexyl 2-methyl butanoate | 0.09 |
| 33.499 | Hexyl isovalerate | 0.19 |
| 34.138 | Linalyl acetate | 35.69 |
| 36.316 | Lavandulyl acetate | 2.89 |
| 39.395 | Hexyl tiglate | 0.16 |
| 41.288 | Neryl acetate | 0.18 |
| 42.575 | Geranyl acetate | 0.36 |
| 42.696 | Daucene | 0.13 |
| 43.025 | Bourbonene <beta> | 0.06 |
| 43.233 | Sesquithujene<7-epi-> | 0.10 |
| 44.184 | Sesquithujene | 0.08 |
| 45.016 | Lavandulyl isobutanoate | 0.09 |
| 45.327 | Caryophyllene <trans-> | 1.39 |
| 46.133 | Bergamotene<alpha-trans-> | 0.15 |
| 46.604 | Farnesene<(Z)-beta-> | 0.05 |
| 47.344 | Farnesene<(E)-beta-> | 1.21 |
| 47.580 | Humulene <alpha> | 0.04 |
| 47.662 | Neryl-propanoate | 0.14 |
| 48.588 | Dauca-5,8-diene | 0.09 |
| 49.164 | Germacrene D | 0.70 |
| 50.381 | Lavandulyl isovalerate <ent> | 0.52 |
| 50.537 | Farnesene<(E,E)-alpha-> | 0.13 |
| 50.771 | Bisabolene <beta> | 0.21 |
| 51.112 | Amorphene <delta> | 0.24 |
| 51.740 | Sesquiphellandrene<beta> | 0.24 |
| 55.224 | Caryophyllene oxide | 0.09 |
| 58.651 | Cadinol <epi-alpha> | 0.15 |
| 61.070 | Bisabolol<alpha-> | 0.36 |
| | | 100.00 |

Chromatogram Lavandula X C:\Users\user\Desktop\QA Data File\psatyal\Lavandula X APRC Re18108SLOE001.qgd



Typical Ranges of Main Components:

Comments:
PASS