

Ho Wood
Cinnamomum camphora

Batch No. CH-59146
China

Monoterpenes	0.22%
myrcene	0.08
limonene	0.06
(E) β ocimene	0.05
(Z) β ocimene	0.02
para-cymene	0.01

Ketones	0.02%
camphor	0.02

Esters	0.03%
(Z) 3-hexenyl butyrate	0.03

Monoterpenols	99.56%
linalool	98.97
trans linalool oxide	0.40
cis-linalool oxide	0.19

Ethers	0.03%
1,8 cineole	0.03

Client



Source



Ho Wood (Cinnamomum camphora)
CH-59146

Sample

Ho Wood (Cinnamomum camphora)
Batch #:..... CH-59146
Type:..... Essential Oil
CAS Number:... 8008-51-3
Nature's Gift

Client



Website

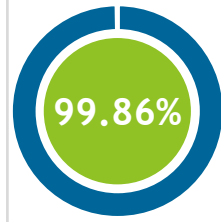
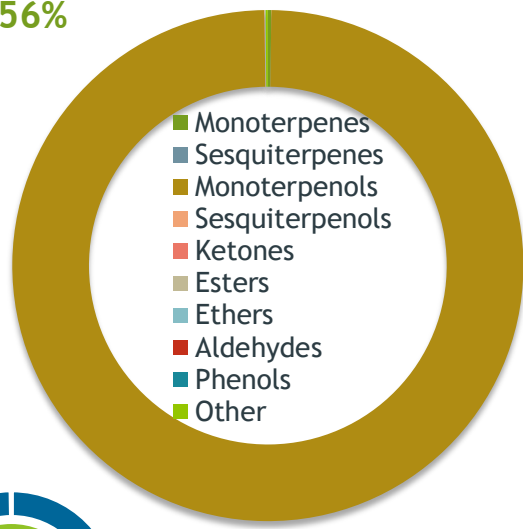


Primary

98.97% Linalool
0.40% trans-Linalool oxide (5)
0.19% cis-Linalool oxide (5)

Monoterpenols

99.56%



Percentage Identified

Result



Conclusion

No adulterants, diluents, or contaminants were detected via this method. This oil meets the expected profile for genuine Essential Oil of Ho Wood (Cinnamomum camphora)

Internal Number: | EVS-4190



Essential Validation Services

747 SW 2nd Ave IMB 12 Suite 306
Gainesville, FL 32601

317.361.5044 | <https://essentialvalidationservices.com/>

Alan Christen

Monoterpenols	0.22%
Sesquiterpenols	0.00%
Monoterpenols	99.56%
Sesquiterpenols	0.00%
Ketones	0.02%
Esters	0.03%
Ethers	0.03%
Aldehydes	0.00%
Phenols	0.00%
Other	0.14%

ESSENTIAL VALIDATION SERVICES | 747 SW 2ND AVE GAINESVILLE, FLORIDA 32601 | 317-361-5044

- Essential Oil testing is performed by using qualitative GC-MS. Method: SOP.T.01 Client Method
- This report may not be published without the consent of Essential Validation Services.
- Chromatograph image may be requested
- This report is valid for 1 year from the analyzed date

Client



Source



Ho Wood (Cinnamomum camphora)

CH-59146

Total Percentage		99.86%		
Number	RT	Area %	Compound Name	Chemical Family
1	10.61	0.08%	Myrcene	Monoterpene
2	12.07	0.01%	para-Cymene	Monoterpene
3	12.28	0.06%	Limonene	Monoterpene
4	12.39	0.03%	1,8-Cineole	Monoterpene Ether
5	12.65	0.02%	(Z)-beta-Ocimene	Monoterpene
6	13.12	0.05%	(E)-beta-Ocimene	Monoterpene
7	14.16	0.19%	cis-Linalool oxide (5) (furanoid)	Monoterpenol
8	14.90	0.40%	trans-Linalool oxide (5) (furanoid)	Monoterpenol
9	15.87	98.97%	Linalool	Monoterpenol
10	17.59	0.02%	Camphor	Monoterpene Ketone
11	19.64	0.03%	(Z)-3-Hexenyl butyrate	Aliphatic Ester

ESSENTIAL VALIDATION SERVICES | 747 SW 2ND AVE GAINESVILLE, FLORIDA 32601 | 317-361-5044

- Essential Oil testing is performed by using qualitative GC-MS. Method: SOP.T.01 Client Method
- This report may not be published without the consent of Essential Validation Services.
- Chromatograph image may be requested
- This report is valid for 1 year from the analyzed date