



316 Old Hickory Blvd East, Madison, TN 37115

tel (615)612-4270 fax (615)860-9171

sold@naturesgift.com

Balancing Body, Mind and Spirit with Pure Essential Oils

Since 1995

www.naturesgift.com

Frankincense | Myrrh Codistill Boswellia sacra | Commiphora myrrha

Batch #OM-59175

Oman

Monoterpenes 58.09%

α pinene	44.65
limonene	3.84
sabinene	1.85
camphene	1.58
β pinene	1.44
myrcene	1.15
para cymene	0.85
α phellandrene	0.63
thuja-2,4(10)-diene	0.51
δ -3-carene	0.31
(Z) β ocimene	0.25
α thujene	0.20
para-cymenene	0.19
γ terpinene	0.17
hashishene	0.16
(E) β ocimene	0.14
α terpinene	0.08
tricyclene	0.05
pseudolimonene	0.04

Ketones 1.4%

verbenone	1.26
pinocarvone	0.14
germacrone	0.12
pinocamphone	0.09
(Z) β elemenone	0.09
carvone	0.07
cryptone	0.04

Monoterpenols 6.15%

para-mentha-1,5-dien-8-ol	1.99
terpinen-4-ol	0.44
trans-pinocarveol	1.28
trans-verbenol	1.13
α terpinenol	1.23
linalool	0.08
cis-verbenol	0.3
para-cymen-8-ol	0.27
trans-carveol	

Aldehydes #REF!

α campholene	0.60
---------------------	------

Esters 1.07%

bornyl acetate	0.75
α -terpinyl acetate	0.32

Ethers 0.87%

caryophyllene oxide	0.17
1,8 cineole	0.70
humulene epoxide II	0.05
curzerene	9.47
furanoeudesma-1,3 diene	6.26
lindestrene	1.96

Sesquiterpenes 9.93%

β elemene	3.05
γ elemene	1.90
β selinene	1.03
β caryophyllene	0.91
germacrene D	0.62
β bourbonene	0.61
δ elemene	0.55
germacrene B	0.36
δ cadinene	0.29
α humulene	0.25
α copaene	0.15
γ muurolene	0.12
9 epi (E) caryophyllene	0.09
γ cadinene	0.07
α muurolene	0.07
selina-3-7(11) diene	0.07
γ selinene	0.06
β copaene	0.05

Sesquiterpenes 0.46%

elemol	0.05
isopathulenol	0.03
β eudesmol	0.18
bulnesol	0.16

Other 0.04%

toluene	0.04
---------	------

Raw Material: resin

Production Method: Steam distillation

Date of Analysis: 10/31/2019

Client



Nature's Gift

Source



Frankincense/Myrrh (*Boswellia sacra/Commiphora myrrha*)

Sample

Frankincense/Myrrh (*Boswellia*)

Batch #:..... - OM-59175

Type:..... Essential Oil

CAS Number:...

Enfleurage Aromatics

Client



Nature's Gift

Website



Primary

44.65%

alpha-Pinene

9.47%

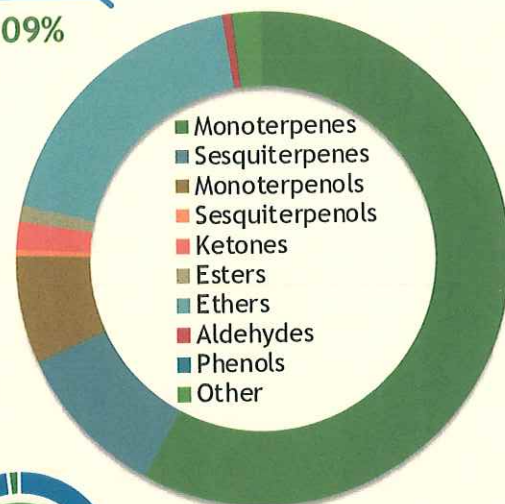
Curzerene

6.26%

Furanoedesma-1,3-diene

Monoterpenes

58.09%



Percentage Identified

Result

APPROVED

Conclusion

No adulterants, Diluents, or contaminants were detected via this method. This oil meets the expected profile for genuine Essential Oil of Frankincense/Myrrh (*Boswellia sacra/Commiphora myrrha*)

Internal Number: | EVS-3344



Essential Validation Services

747 SW 2nd Ave IMB 12 Suite 306
Gainesville, FL 32601

317.361.5044 |

<https://essentialvalidationservices.com/>

adam@essentialvalidationservices.com

Adam Christen

Monoterpenes	58.09%	8.09%
Sesquiterpenes	10.00%	10.25%
Monoterpenols	7.00%	7.06%
Sesquiterpenols	0.42%	0.42%
Ketones	1.81%	1.81%
Esters	1.07%	1.07%
Ethers	18.79%	18.79%
Aldehydes	0.60%	0.60%
Phenols	0.04%	0.04%
Other	1.87%	1.87%

ESSENTIAL VALIDATION SERVICES | 747 SW 2ND AVE GAINESVILLE, FLORIDA 32601 | 317-361-5044

Essential Validation Services

- This report is the digitally signed and will only be considered valid if the signature is intact.
- This report may not be published without the consent of Essential Validation Services.
- Chromatograph image may not show full run time

10/31/2019

Client



Source



Frankincense/Myrrh (*Boswellia sacra/Commiphora myrrha*)

Total Percentage		98.13%		
Number	RT	Area %	Compound Name	Chemical Family
1	3.86	0.04%	Toluene	Simple Phenolic
2	8.26	0.16%	Hashishene	Monoterpene
3	8.35	0.05%	Tricyclene	Monoterpene
4	8.52	0.20%	alpha-Thujene	Monoterpene
5	8.85	44.65%	alpha-Pinene	Monoterpene
6	9.41	1.58%	Camphene	Monoterpene
7	9.58	0.51%	Thuja-2,4(10)-diene	Monoterpene
8	10.38	1.85%	Sabinene	Monoterpene
9	10.56	1.44%	beta-Pinene	Monoterpene
10	11.14	1.15%	Myrcene	Monoterpene
11	11.70	0.04%	Pseudolimonene	Monoterpene
12	11.81	0.63%	alpha-Phellandrene	Monoterpene
13	11.92	0.31%	delta-3-Carene	Monoterpene
14	12.29	0.08%	alpha-Terpinene	Monoterpene
15	12.62	0.85%	para-Cymene	Monoterpene
16	12.85	3.84%	Limonene	Monoterpene
17	12.94	0.70%	1,8-Cineole	Monoterpene Ether
18	13.21	0.25%	(Z)-beta-Ocimene	Monoterpene
19	13.68	0.14%	(E)-beta-Ocimene	Monoterpene
20	14.17	0.17%	gamma-Terpinene	Monoterpene
21	15.37	0.18%	alpha-Pinene oxide	Monoterpene Ether
22	15.60	0.19%	para-Cymenene	Monoterpene
23	16.12	0.08%	Linalool	Monoterpenol
24	17.28	0.60%	alpha-Campholene aldehyde	Monoterpene Aldehyde
25	17.90	1.28%	trans-Pinocarveol	Monoterpenol
26	18.00	0.30%	cis-Verbenol	Monoterpenol
27	18.17	1.13%	trans-Verbenol	Monoterpenol
28	18.81	0.09%	Pinocamphone	Monoterpene Ketone
29	18.90	0.14%	Pinocarvone	Monoterpene Ketone
30	19.38	1.99%	para-Mentha-1,5-dien-8-ol	Monoterpenol
31	19.79	0.44%	Terpinen-4-ol	Monoterpenol
32	20.00	0.04%	Cryptone	Monoterpene Ketone
33	20.09	0.27%	para-Cymen-8-ol	Monoterpenol
34	20.48	1.23%	alpha-Terpineol	Monoterpenol
35	20.96	1.26%	Verbenone	Monoterpene Ketone

ESSENTIAL VALIDATION SERVICES | 747 SW 2ND AVE GAINESVILLE, FLORIDA 32601 | 317-361-5044

Essential Validation Services

- This report is the digitally signed and will only be considered valid if the signature is intact.
 - This report may not be published without the consent of Essential Validation Services.
 - Chromatograph image may not show full run time

10/31/2019

Client



Source



*Frankincense/Myrrh (Boswellia
sacra/Commiphora myrrha)*

Number	RT	Area %	Compound Name	Chemical Family
36	21.572	0.34%	trans-Carveol	Monoterpene Ketone
37	22.66	0.07%	Carvone	Monoterpene Ketone
38	24.54	0.75%	Bornyl acetate	Monoterpene Ester
39	26.82	0.55%	delta-Elemene	Sesquiterpene
40	27.30	0.32%	alpha-Terpinyl acetate	Monoterpene Ester
41	28.53	0.15%	alpha-Copaene	Sesquiterpene
42	28.85	0.61%	beta-Bourbonene	Sesquiterpene
43	29.15	3.05%	beta-Elemene	Sesquiterpene
44	30.34	0.91%	beta-Caryophyllene	Sesquiterpene
45	30.83	1.90%	gamma-Elemene	Sesquiterpene
46	31.38	0.05%	beta-Copaene	Sesquiterpene
47	31.82	0.25%	alpha-Humulene	Sesquiterpene
48	32.01	0.09%	9-epi-(E)-Caryophyllene	Sesquiterpene
49	32.59	0.06%	gamma-Selinene	Sesquiterpene
50	32.67	0.12%	gamma-Muurolene	Sesquiterpene
51	32.88	0.62%	Germacrene D	Sesquiterpene
52	33.19	1.03%	beta-Selinene	Sesquiterpene
53	33.47	9.47%	Curzerene	Sesquiterpene Ether
54	33.65	0.07%	alpha-Muurolene	Sesquiterpene
55	34.20	0.07%	gamma-Cadinene	Sesquiterpene
56	34.43	0.29%	delta-Cadinene	Sesquiterpene
57	35.29	0.07%	Selina-3,7(11)-diene	Sesquiterpene
58	35.57	0.05%	Elemol	Sesquiterpenol
59	35.94	0.36%	Germacrene B	Sesquiterpene
60	36.81	0.17%	Caryophyllene oxide	Sesquiterpene Ether
61	37.49	0.09%	cis-beta-Elemenone	Sesquiterpene Ketone
62	37.87	0.05%	Humulene epoxide II	Sesquiterpene Ether
63	38.52	6.26%	Furanoedesma-1,3-diene	Sesquiterpene Ether
64	38.63	0.03%	Isospathulenol	Sesquiterpenol
65	38.82	1.96%	Lindestrene	Sesquiterpene Ether
66	39.56	0.18%	beta-Eudesmol	Sesquiterpenol
67	40.16	0.16%	Bulnesol	Sesquiterpenol
68	40.95	0.12%	Germacrone	Sesquiterpene Ketone

ESSENTIAL VALIDATION SERVICES | 747 SW 2nd AVE GAINESVILLE, FLORIDA 32601 | 317-361-5044

Essential Validation Services

- This report is the digitally signed and will only be considered valid if the signature is intact.
- This report may not be published without the consent of Essential Validation Services.
- Chromatograph image may not show full run time

10/31/2019