



316 Old Hickory Blvd East, Madison, TN 37115

tel (615)612-4270 fax (615)860-9171

sold@naturesgift.com

*Balancing Body, Mind and Spirit with Pure Essential Oils*

*Since 1995*

www.naturesgift.com

## Eucalyptus Smithii

*Eucalyptus smithii*

Swaziland

Batch #SZ-59193

Monoterpenes	17.73%	Monoterpenols	4.99%	Sesquiterpenes	0.42%
α pinene	7.46	α terpineol	2.42	β caryophyllene	0.09
para cymene	3.67	trans-pinocarveol	0.70	aromadendrene	0.07
limonene	3.14	terpinen-4-ol	0.69	α copaene	0.04
γ terpinene	1.11	(E) para-mentha-1(7),8-dien-2-ol	0.26	α humulene	0.04
α phellandrene	0.78	δ terpineol	0.22	β bourbonene	0.03
myrcene	0.50	(Z) para-mentha-1(7),8-dien-2-ol	0.20	allo-aromadendrene	0.03
β pinene	0.44	linalol	0.13	bicyclogermacrene	0.03
terpinolene	0.19	citronellol	0.12	α gurjunene	0.02
α thujene	0.07	fenchol	0.06	β selinene	0.02
α terpinene	0.07	(Z) linalool oxide (5) (furanoid)	0.04	viridiflorene	0.02
(Z) β ocimene	0.07	trans-carveol	0.03	β cadinene	0.02
camphene	0.06	(Z) para-mentha-2,8-dien-1-ol	0.02	δ elemene	0.01
para-cymenene	0.05	(E) para-mentha-2,8-dien-1-ol	0.02		
hashishene	0.03	camphene hydrate	0.02		
α fenchene	0.03	cis-Pinocarveol	0.02	<b>Sesquiterpenols</b>	<b>0.63%</b>
thuja-2,4(10)-diene	0.02	nerol	0.02	β eudesmol	0.47
pseudolimonene	0.02	cis-carveol	0.02	γ eudesmol	0.07
(E) β ocimene	0.02			guaiol	0.05
				palustrol	0.02
				globulol	0.01
				hinesol	0.01
<b>Ethers</b>	<b>75.4%</b>	<b>Ketones</b>	<b>0.52%</b>	<b>Other</b>	<b>0.12%</b>
1,8 cineole	75.37	carvone	0.29	1-hexanol	0.05
(E) limonene oxide	0.03	pinocarvone	0.17	(E) hex-3-en-1-ol	0.04
		2-nonanone	0.04	isovaleric acid	0.02
		carvotanacetone	0.02	(E) 2-hexenol	0.01

Raw Material: leaves

Production Method: Steam distillation

Date of Analysis: 8/30/2021

Client



Source



*Organic Eucalyptus Smithii (Eucalyptus smithii) SZ-59193*

Sample

**Organic Eucalyptus Smithii (Eucalyptus**

Batch #:..... | SZ-59193

Type:..... | Essential Oil

CAS Number:... | 91771-68-5

Nature's Gift

Client



Website

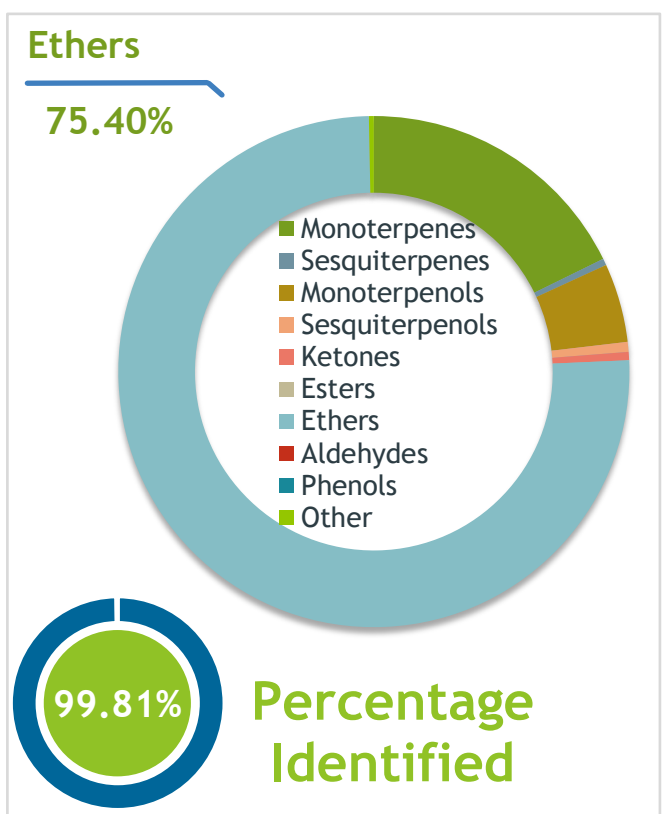


Primary

**75.37%** | 1,8-Cineole

**7.46%** | alpha-Pinene

**3.67%** | para-Cymene



APPROVED

Conclusion

No adulterants, diluents, or contaminants were detected via this method. This oil meets the expected profile for genuine Essential Oil of Organic Eucalyptus Smithii (Eucalyptus smithii)

Internal Number: | EVS-4577



Essential Validation Services

747 SW 2nd Ave IMB 12 Suite 306  
Gainesville, FL 32601

317.361.5044 |  
<https://essentialvalidationservices.com/>



Monoterpenes	17.73%	17.73%
Sesquiterpenes	0.42%	0.42%
Monoterpenols	4.99%	4.99%
Sesquiterpenols	0.63%	0.63%
Ketones	0.52%	0.52%
Esters	0.00%	0.00%
Ethers	75.40%	75.40
Aldehydes	0.00%	0.00%
Phenols	0.00%	0.00%
Other	0.31%	0.31%

ESSENTIAL VALIDATION SERVICES | 747 SW 2ND AVE GAINESVILLE, FLORIDA 32601 | 317-361-5044

- Essential Oil testing is performed by using qualitative GC-MS. Method: SOP.T.01 Client Method  
 - This report may not be published without the consent of Essential Validation Services.  
 - Chromatograph image may be requested  
 - This report is valid for 1 year from the analyzed date

Client



Source



*Organic Eucalyptus Smithii (Eucalyptus smithii)*  
SZ-59193

Total Percentage		99.81%		
Number	RT	Area %	Compound Name	Chemical Family
1	5.23	0.02%	Isovaleric acid	Aliphatic Acid
2	5.62	0.04%	(E)-Hex-3-en-1-ol	Aliphatic Alcohol
3	5.94	0.01%	(E)-2-Hexenol	Aliphatic Alcohol
4	6.04	0.05%	1-Hexanol	Aliphatic Alcohol
5	7.66	0.03%	Hashishene	Monoterpene
6	7.90	0.07%	alpha-Thujene	Monoterpene
7	8.15	7.46%	alpha-Pinene	Monoterpene
8	8.71	0.03%	alpha-Fenchene	Monoterpene
9	8.76	0.06%	Camphene	Monoterpene
10	8.93	0.02%	Thuja-2,4(10)-diene	Monoterpene
11	9.87	0.44%	beta-Pinene	Monoterpene
12	10.45	0.50%	Myrcene	Monoterpene
13	10.99	0.02%	Pseudolimonene	Monoterpene
14	11.10	0.78%	alpha-Phellandrene	Monoterpene
15	11.57	0.07%	alpha-Terpinene	Monoterpene
16	11.91	3.67%	para-Cymene	Monoterpene
17	12.11	3.14%	Limonene	Monoterpene
18	12.30	75.37%	1,8-Cineole	Monoterpene Ether
19	12.49	0.07%	(Z)-beta-Ocimene	Monoterpene
20	12.95	0.02%	(E)-beta-Ocimene	Monoterpene
21	13.42	1.11%	gamma-Terpinene	Monoterpene
22	13.97	0.04%	cis-Linalool oxide (5) (furanoid)	Monoterpenol
23	14.64	0.19%	Terpinolene	Monoterpene
24	14.84	0.05%	para-Cymenene	Monoterpene
25	14.95	0.04%	2-Nonanone	Monoterpene Ketone
26	15.36	0.13%	Linalool	Monoterpenol
27	16.13	0.06%	Fenchol	Monoterpenol
28	16.29	0.02%	cis-para-Mentha-2,8-dien-1-ol	Monoterpenol
29	16.96	0.02%	trans-para-Mentha-2,8-dien-1-ol	Monoterpenol
30	17.08	0.70%	trans-Pinocarveol	Monoterpenol
31	17.72	0.02%	Camphene hydrate	Monoterpenol
32	17.94	0.03%	trans-Limonene oxide	Monoterpene Ether
33	18.07	0.17%	Pinocarpone	Monoterpene Ketone
34	18.50	0.22%	delta-Terpineol	Monoterpenol
35	18.96	0.69%	Terpinen-4-ol	Monoterpenol

ESSENTIAL VALIDATION SERVICES | 747 SW 2<sup>ND</sup> AVE GAINESVILLE, FLORIDA 32601 | 317-361-5044

- Essential Oil testing is performed by using qualitative GC-MS. Method: SOP.T.01 Client Method  
 - This report may not be published without the consent of Essential Validation Services.  
 - Chromatograph image may be requested  
 - This report is valid for 1 year from the analyzed date

Client



Nature's Gift

Source



Organic *Eucalyptus Smithii* (*Eucalyptus  
smithii*)  
SZ-59193

Number	RT	Area %	Compound Name	Chemical Family
36	19.318	0.26%	trans-para-Mentha-1(7),8-dien-2-ol	Monoterpenol
37	19.65	2.42%	alpha-Terpineol	Monoterpenol
38	19.99	0.02%	cis-Pinocarveol	Monoterpenol
39	20.76	0.03%	trans-Carveol	Monoterpenol
40	21.06	0.02%	Nerol	Monoterpenol
41	21.21	0.20%	cis-para-Mentha-1(7),8-dien-2-ol	Monoterpenol
42	21.35	0.02%	cis-Carveol	Monoterpenol
43	21.83	0.29%	Carvone	Monoterpene Ketone
44	22.04	0.02%	Carvotanacetone	Monoterpene Ketone
45	22.26	0.12%	Citronellol	Monoterpenol
46	25.77	0.01%	delta-Elemene	Sesquiterpene
47	27.62	0.04%	alpha-Copaene	Sesquiterpene
48	27.92	0.03%	beta-Bourbonene	Sesquiterpene
49	28.93	0.02%	alpha-Gurjunene	Sesquiterpene
50	29.41	0.09%	beta-Caryophyllene	Sesquiterpene
51	30.19	0.07%	Aromadendrene	Sesquiterpene
52	30.88	0.04%	alpha-Humulene	Sesquiterpene
53	31.06	0.03%	allo-Aromadendrene	Sesquiterpene
54	32.24	0.02%	beta-Selinene	Sesquiterpene
55	32.38	0.02%	Viridiflorene	Sesquiterpene
56	32.54	0.03%	Bicyclogermacrene	Sesquiterpene
57	33.50	0.02%	beta-Cadinene	Sesquiterpene
58	36.02	0.02%	Palustrol	Sesquiterpenol
59	36.34	0.01%	Globulol	Sesquiterpenol
60	37.72	0.05%	Guaiol	Sesquiterpenol
61	37.80	0.07%	gamma-Eudesmol	Sesquiterpenol
62	38.09	0.01%	Hinesol	Sesquiterpenol
63	38.60	0.47%	beta-Eudesmol	Sesquiterpenol