

Eucalyptus Radiata

Eucalyptus radiata

Australia

Batch #AU-59138

Monoterpenes 16.7%

para cymene	4.21
limonene	4.10
γ terpinene	2.93
α pinene	2.72
α phellandrene	0.81
myrcene	0.77
α terpinene	0.40
β pinene	0.36
(Z) β ocimene	0.18
terpinolene	0.09
(E) β ocimene	0.06
alloocimene	0.03
camphene	0.02
α thujene	0.02

Monoterpenols 7.99%

α terpineol	7.05
terpinen-4-ol	0.84
trans-pinocarveol	0.1

Aldehydes 0.32%

geranial	0.18
neral	0.14

Ethers 74.86%

1,8 cineole	74.86
-------------	-------

Esters 0.12%

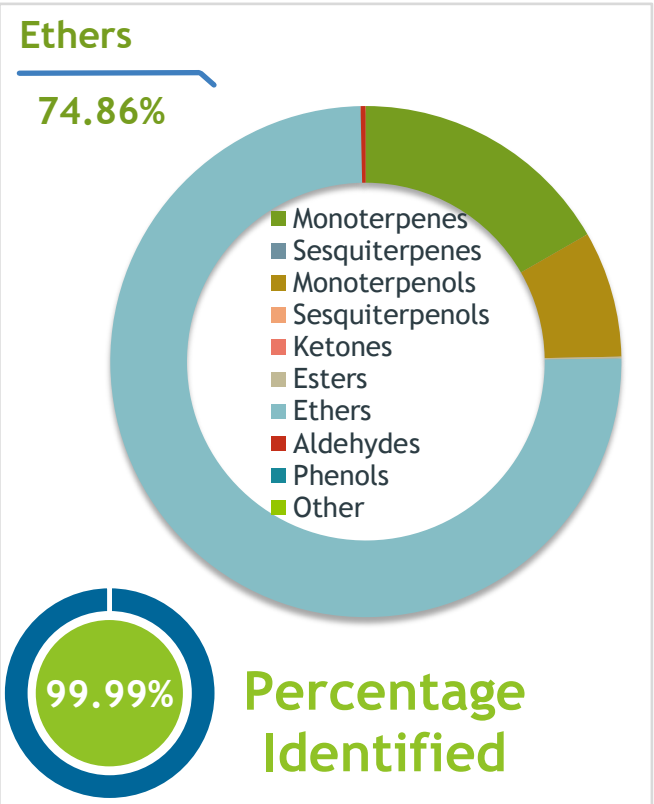
3 methyl-3-buten-1-yl acetate	0.12
-------------------------------	------

Client  **Source** 

Nature's Gift

Eucalyptus Radiata (Eucalyptus radiata)
AU-59138

Sample Eucalyptus Radiata (Eucalyptus radiata)
Batch #:..... AU-59138
Type:..... Essential Oil
CAS Number:... 92201-64-4
Nature's Gift



Client  **Website** 

Nature's Gift

Primary

- 74.86% 1,8-Cineole
- 7.05% alpha-Terpineol
- 4.21% para-Cymene

Result 

Conclusion

No adulterants, diluents, or contaminants were detected via this method. This oil meets the expected profile for genuine Essential Oil of Eucalyptus Radiata (Eucalyptus radiata)

Internal Number: | EVS-4173


Essential Validation Services
747 SW 2nd Ave IMB 12 Suite 306
Gainesville, FL 32601
317.361.5044 |
<https://essentialvalidationservices.com/>
Alan Christen

Monoterpenes	16.70%	16.70%
Sesquiterpenes		0.00%
Monoterpenols	7.05%	7.99%
Sesquiterpenols		0.00%
Ketones		0.00%
Esters		0.12%
Ethers	74.86%	74.86%
Aldehydes		0.32%
Phenols		0.00%
Other		0.01%

ESSENTIAL VALIDATION SERVICES | 747 SW 2ND AVE GAINESVILLE, FLORIDA 32601 | 317-361-5044

- Essential Oil testing is performed by using qualitative GC-MS. Method: SOP.T.01 Client Method
- This report may not be published without the consent of Essential Validation Services.
- Chromatograph image may be requested
- This report is valid for 1 year from the analyzed date



Eucalyptus Radiata (Eucalyptus radiata)

AU-59138

Total Percentage			99.99%		
Number	RT	Area %	Compound Name	Chemical Family	
1	7.00	0.12%	3-Methyl-3-buten-1-yl acetate	Aliphatic Ester	
2	8.05	0.02%	alpha-Thujene	Monoterpene	
3	8.30	2.72%	alpha-Pinene	Monoterpene	
4	8.92	0.02%	Camphene	Monoterpene	
5	10.03	0.36%	beta-Pinene	Monoterpene	
6	10.62	0.77%	Myrcene	Monoterpene	
7	11.27	0.81%	alpha-Phellandrene	Monoterpene	
8	11.75	0.40%	alpha-Terpinene	Monoterpene	
9	12.10	4.21%	para-Cymene	Monoterpene	
10	12.29	4.10%	Limonene	Monoterpene	
11	12.50	74.86%	1,8-Cineole	Monoterpene Ether	
12	12.67	0.18%	(Z)-beta-Ocimene	Monoterpene	
13	13.13	0.06%	(E)-beta-Ocimene	Monoterpene	
14	13.61	2.93%	gamma-Terpinene	Monoterpene	
15	14.83	0.09%	Terpinolene	Monoterpene	
16	16.85	0.03%	Alloocimene	Monoterpene	
17	17.30	0.10%	trans-Pinocarveol	Monoterpenol	
18	19.17	0.84%	Terpinen-4-ol	Monoterpenol	
19	19.89	7.05%	alpha-Terpineol	Monoterpenol	
20	21.84	0.14%	Neral	Monoterpene Aldehyde	
21	23.20	0.18%	Geranial	Monoterpene Aldehyde	

ESSENTIAL VALIDATION SERVICES | 747 SW 2nd AVE GAINESVILLE, FLORIDA 32601 | 317-361-5044