

Client



Source



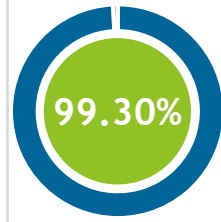
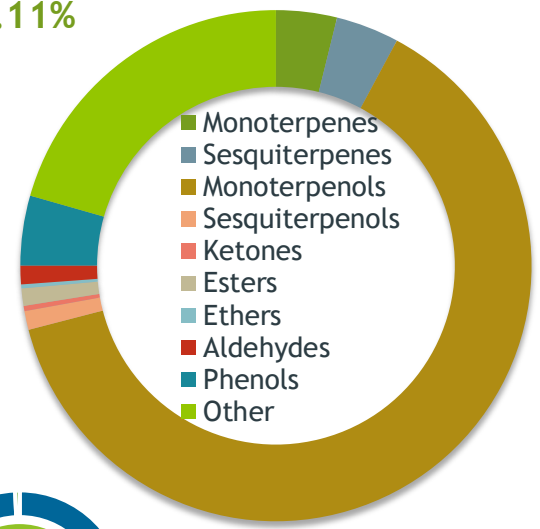
Saudi Arabian Rose (*Rosa damascena*)
SA-59190

Sample

Saudi Arabian Rose (*Rosa damascena*)
Batch #:..... SA-59190
Type:..... Essential Oil
CAS Number:... 8007-01-0
Nature's Gift

Monoterpenols

63.11%



Percentage Identified

Client



Website



Primary

26.26% | Citronellol
20.37% | Geraniol
10.69% | Nerol

Result



Conclusion

No adulterants, diluents, or contaminants were detected via this method. This oil meets the expected profile for genuine Essential Oil of Saudi Arabian Rose (*Rosa damascena*)

Internal Number: | EVS-4523



Essential Validation Services

747 SW 2nd Ave IMB 12 Suite 306
Gainesville, FL 32601

317.361.5044 |
<https://essentialvalidationservices.com/>

Alan Chastain

Monoterpenes	3.85%
Sesquiterpenes	4.00%
Monoterpenols	63.11%
Sesquiterpenols	1.19%
Ketones	0.33%
Esters	1.10%
Ethers	0.25%
Aldehydes	1.18%
Phenols	4.41%
Other	20.58%

ESSENTIAL VALIDATION SERVICES | 747 SW 2ND AVE GAINESVILLE, FLORIDA 32601 | 317-361-5044

- Essential Oil testing is performed by using qualitative GC-MS. Method: SOP.T.01 Client Method
- This report may not be published without the consent of Essential Validation Services.
- Chromatograph image may be requested
- This report is valid for 1 year from the analyzed date

Client



Source

Saudi Arabian Rose (*Rosa damascena*)

SA-59190

Total Percentage		99.30%		
Number	RT	Area %	Compound Name	Chemical Family
1	5.64	0.01%	cis-Hex-3-en-1-ol	Aliphatic Alcohol
2	6.04	0.06%	1-Hexanol	Aliphatic Alcohol
3	7.08	0.01%	Heptanal	Aliphatic Aldehyde
4	8.16	1.66%	alpha-Pinene	Monoterpene
5	8.76	0.01%	Camphene	Monoterpene
6	9.71	0.19%	Sabinene	Monoterpene
7	9.88	0.38%	beta-Pinene	Monoterpene
8	10.28	0.02%	6-Methyl-5-hepten-2-one	Aliphatic Ketone
9	10.46	0.98%	Myrcene	Monoterpene
10	10.65	0.02%	6-Methyl-5-hepten-2-ol	Aliphatic Alcohol
11	11.11	0.01%	alpha-Phellandrene	Monoterpene
12	11.58	0.08%	alpha-Terpinene	Monoterpene
13	11.91	0.04%	para-Cymene	Monoterpene
14	12.12	0.21%	Limonene	Monoterpene
15	12.22	0.03%	1,8-Cineole	Monoterpene Ether
16	12.50	0.03%	(Z)-beta-Ocimene	Monoterpene
17	12.96	0.07%	(E)-beta-Ocimene	Monoterpene
18	13.43	0.14%	gamma-Terpinene	Monoterpene
19	13.98	0.01%	cis-Linalool oxide (5) (furanoid)	Monoterpenol
20	14.65	0.05%	Terpinolene	Monoterpene
21	15.39	3.72%	Linalool	Monoterpenol
22	15.60	0.02%	Nonanal	Aliphatic Aldehyde
23	15.82	2.05%	2-Phenylethanol	Simple Phenolic
24	16.01	0.02%	Perillene	Monoterpene Ether
25	16.42	0.01%	cis-para-Menth-2-en-1-ol	Monoterpenol
26	16.54	0.12%	trans-Rose oxide	Monoterpene Ether
27	17.74	0.05%	Nerol oxide	Monoterpene Ether
28	18.59	0.02%	para-Mentha-1,5-dien-8-ol	Monoterpenol
29	18.74	0.02%	1-Nonanol	Fatty alcohol
30	18.98	0.81%	Terpinen-4-ol	Monoterpenol
31	19.67	1.05%	alpha-Terpineol	Monoterpenol
32	21.14	10.69%	Nerol	Monoterpenol
33	21.36	26.26%	Citronellol	Monoterpenol
34	21.69	0.51%	Neral	Monoterpene Aldehyde
35	21.87	0.31%	Carvone	Monoterpene Ketone

Client



Source



Saudi Arabian Rose (*Rosa damascena*)
SA-59190

Number	RT	Area %	Compound Name	Chemical Family
36	22.407	20.37%	Geraniol	Monoterpene Ketone
37	23.03	0.64%	Geranial	Monoterpene Aldehyde
38	25.41	0.02%	Methyl geranate	Monoterpene Ester
39	26.65	1.52%	Eugenol	Phenylpropanoid
40	27.04	0.09%	Neryl acetate	Monoterpene Ester
41	27.89	0.99%	Geranyl acetate	Monoterpene Ester
42	28.07	0.02%	beta-Bourbonene	Sesquiterpene
43	28.25	0.21%	beta-Elemene	Sesquiterpene
44	28.77	0.84%	Methyl eugenol	Phenylpropanoid
45	29.42	0.61%	beta-Caryophyllene	Sesquiterpene
46	29.87	0.08%	beta-Gurjunene	Sesquiterpene
47	30.15	0.61%	alpha-Guaiene	Sesquiterpene
48	30.46	0.04%	Aromadendrene	Sesquiterpene
49	30.73	0.02%	beta-Copaene	Sesquiterpene
50	30.90	0.44%	alpha-Humulene	Sesquiterpene
51	31.69	0.02%	gamma-Selinene	Sesquiterpene
52	31.96	1.22%	Germacrene D	Sesquiterpene
53	32.61	0.14%	alpha-Selinene	Sesquiterpene
54	32.84	0.45%	beta-Selinene	Sesquiterpene
55	32.99	0.37%	Pentadecane	Alkane
56	33.07	0.10%	(E,E)-alpha-Farnesene	Sesquiterpene
57	33.52	0.04%	beta-Cadinene	Sesquiterpene
58	34.67	0.04%	Elemol	Sesquiterpenol
59	35.25	0.05%	(E)-Nerolidol	Sesquiterpenol
60	35.87	0.03%	Caryophyllene oxide	Sesquiterpene Ether
61	36.89	0.09%	Hexadecane	Alkane
62	37.40	0.01%	10-epi-gamma-Eudesmol	Sesquiterpenol
63	37.82	0.05%	gamma-Eudesmol	Sesquiterpenol
64	38.28	0.02%	T-Muurolol	Sesquiterpenol
65	38.68	0.11%	alpha-Eudesmol	Sesquiterpenol
66	38.73	0.07%	Pogostol	Sesquiterpenol
67	39.69	0.17%	Tetradecanol	Monoterpenol
68	40.19	0.02%	(Z,Z)-Farnesol	Sesquiterpenol
69	40.59	1.85%	Heptadecane	Alkane
70	41.01	0.77%	(E,Z)-Farnesol	Sesquiterpenol
71	43.20	0.03%	1-Pentadecanol	Sesquiterpenol

ESSENTIAL VALIDATION SERVICES | 141 SW 2nd AVE GAINESVILLE, FLORIDA 32601 | 352-351-5044

- Essential Oil testing is performed by using qualitative GC-MS. Method: SOP.T.01 Client Method
 - This report may not be published without the consent of Essential Validation Services.
 - Chromatograph image may be requested
 - This report is valid for 1 year from the analyzed date

