

Client



Source

The image part with relationship ID r1d219 was not found in the file.

Blue Lotus (*Nymphaea caerulea*)  
TH-59411 - Thailand

Sample

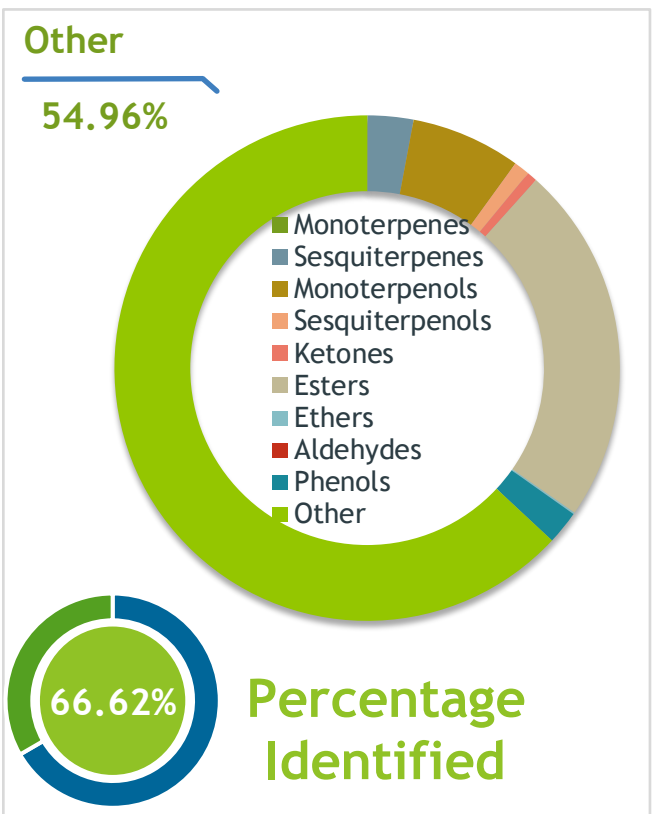
Blue Lotus (*Nymphaea caerulea*)  
 Identification #: TH-59411  
 Type:..... Essential Oil  
 CAS Number:... 0  
Nature's Gift

Properties

Country Of Origin | Thailand  
 Specific Gravity | NT  
 Refractive Index | NT

Primary

<b>12.46%</b>	<b>Ethyl alpha-linolenate</b>
<b>8.23%</b>	<b>6,9-Heptadecadiene</b>
<b>6.37%</b>	<b>43.92 Nonadecane (C19)</b>



Result



10/15/2024

Conclusion

No adulterants, diluents, or contaminants were detected via this method. This oil meets the expected profile for genuine Essential Oil of Blue Lotus (*Nymphaea caerulea*)

Internal Number: | EVS-6356



Essential Validation Services

747 SW 2nd Ave IMB 12 Suite 306  
Gainesville, FL 32601

317.361.5044 |  
<https://essentialvalidationservices.com/>



Monoterpenes		0.03%
Sesquiterpenes		2.54%
Monoterpenols		6.13%
Sesquiterpenols		0.88%
Ketones		0.57%
Esters		20.09%
Ethers		0.09%
Aldehydes		0.00%
Phenols		1.87%
Other		54.96%

ESSENTIAL VALIDATION SERVICES | 240 GOOSE HOLLOW ROAD BERTHOUD, CO 80513 | 317-361-5044

Client



Source

The image part with relationship ID rId219 was not found in the file.

Blue Lotus (*Nymphaea caerulea*)

TH-59411

Total Percentage		66.62%		
Number	RT	Area %	Compound Name	Chemical Family
1	4.24	0.01%	Hexan-2-ol	Aliphatic Alcohol
2	5.31	0.07%	Isovaleric acid	Aliphatic Acid
3	5.57	0.05%	Ethyl isovalerate	Aliphatic Ester
4	5.63	0.01%	cis-Hex-3-en-1-ol	Aliphatic Alcohol
5	6.27	0.01%	Isoamyl acetate	Aliphatic Ester
6	9.28	0.06%	Benzaldehyde	Simple Phenolic
7	10.12	0.05%	Phenol	Phenol
8	10.28	0.02%	6-Methyl-5-hepten-2-one	Aliphatic Ketone
9	10.89	0.02%	Ethyl hexanoate	Monoterpene Ester
10	11.10	0.01%	7.91 Ethyl (3E)-hexenoate	Aliphatic Ester
11	12.21	0.01%	1,8-Cineole	Monoterpene Ether
12	12.38	1.31%	Benzyl alcohol	Simple Phenolic
13	13.98	0.01%	cis-Linalool oxide (5) (furanoid)	Monoterpenol
14	14.26	0.16%	para-Cresol	Phenol
15	14.62	0.01%	Guaiacol	Simple Phenolic
16	14.71	0.03%	trans-Linalool oxide (5) (furanoid)	Monoterpenol
17	15.03	0.20%	Methyl benzoate	Phenolic Ester
18	15.37	0.70%	Linalool	Monoterpenol
19	15.82	0.13%	2-Phenylethanol	Simple Phenolic
20	17.02	0.02%	Phenylacetone nitrile	Simple Phenolic
21	18.17	0.26%	Benzyl acetate	Phenolic Ester
22	18.51	0.35%	Ethyl benzoate	Phenolic Ester
23	19.37	0.46%	UK	
24	20.14	0.02%	Verbenone	Monoterpene Ketone
25	21.80	0.04%	Ethyl phenylacetate	Monoterpene Ester
26	22.30	0.11%	para-Anisaldehyde	Simple Phenolic
27	23.61	0.08%	Anisalcohol	Phenolic Ether
28	24.51	0.02%	Tridecane	Alkane
29	24.64	0.02%	Cinnamyl alcohol	Phenylpropanoid
30	26.90	0.02%	22.78 Nonalactone<gamma->	Sesquiterpene Ketone
31	27.39	0.01%	Decanoic acid	Monoterpene Acid
32	27.58	0.03%	23.55 Ionol<alpha-(E)->	0.00
33	28.58	0.01%	Ethyl decanoate	Monoterpene Ester
34	28.81	0.04%	Tetradecane	Alkane
35	29.14	0.02%	25.10 Ionone<dihydro-alpha->	0.00

ESSENTIAL VALIDATION SERVICES | 1240 GOOSE HOLLOW ROAD BERTHOUD, CO 80513 | 317-361-5044

Client



Source

File image part with relationship id  
rid219 was not found in the file.

*Blue Lotus (Nymphaea caerulea)*  
TH-59411

Number	RT	Area %	Compound Name	Chemical Family
36	29.385	0.01%	25.13 Anisyl acetate<para->	0.00
37	29.54	0.06%	(E)-alpha-Ionone	terpene Ketone/Aroma Chemi
38	30.02	0.36%	trans-alpha-Bergamotene	Sesquiterpene
39	30.33	0.02%	(Z)-beta-Farnesene	Sesquiterpene
40	30.67	0.03%	Geranylacetone	Monoterpene
41	30.91	0.61%	(E)-beta-Farnesene	Sesquiterpene
42	31.85	0.12%	(E)-beta-Ionone	Sesquiterpene
43	32.15	0.01%	1-Dodecanol	Monoterpenol
44	32.46	0.08%	(Z,E)-alpha-Farnesene	Sesquiterpene
45	32.56	0.06%	Zingiberene	Sesquiterpene
46	32.64	0.03%	2-Tridecanone	Sesquiterpene Ketone
47	32.94	3.97%	Pentadecane	Alkane
48	33.01	0.49%	(E,E)-alpha-Farnesene	Sesquiterpene
49	33.21	0.01%	gamma-Cadinene	Sesquiterpene
50	33.44	0.04%	delta-Cadinene	Sesquiterpene
51	33.69	0.75%	beta-Sesquiphellandrene	Sesquiterpene
52	35.17	0.03%	(E)-Nerolidol	Sesquiterpenol
53	35.36	0.04%	Dodecanoic acid	Sesquiterpene Acid
54	35.49	0.07%	(Z)-3-Hexenyl benzoate	Monoterpene Ester
55	35.91	0.01%	32.44 Hexadecene<1->	0.00
56	36.52	0.09%	Ethyl dodecanoate	Monoterpene Ester
57	36.78	0.06%	Hexadecane	Alkane
58	38.19	0.04%	34.74 Methyl jasmonate<Z->	0.00
59	38.61	0.04%	alpha-Cadinol	Sesquiterpenol
60	39.34	8.23%	6,9-Heptadadiene	
61	39.43	0.38%	UK	
62	39.63	5.38%	Tetradecanol	Monoterpenol
63	39.80	0.02%	alpha-Bisabolol	Sesquiterpenol
64	40.33	0.48%	2-Pentadecanone	Sesquiterpene Ketone
65	40.49	1.17%	Heptadecane	Alkane
66	41.30	0.01%	37.57 Methyl tetradecanoate	0.00
67	41.39	0.01%	Oplopanone	Sesquiterpenol
68	42.56	0.16%	Benzyl benzoate	Phenolic Ester
69	42.67	0.15%	Tetradecanoic acid	Sesquiterpene Acid
70	43.73	0.24%	Ethyl tetradecanoate	Monoterpene Ester

ESSENTIAL VALIDATION SERVICES | 1240 GOOSE HOLLOW ROAD BERTHOUD, CO 80513 | 317-361-5044

Client



Source

FILE IMAGE PATH: \\MS1\RELATIONS\1171171\1171171.d219 was not found in the file.

Blue Lotus (*Nymphaea caerulea*)

TH-59411

72	44.80	0.02%	41.42 Isopropyl tetradecanoate	0.00
73	45.54	0.03%	2-Phenylethyl benzoate	Phenolic Ester
74	46.65	0.52%	1-Hexadecanol	Sesquiterpenol
75	47.37	6.37%	43.92 Nonadecane (C19)	0.00
76	47.56	0.43%	UK	
77	48.12	0.31%	Methyl palmitate	Fatty Acid Ester
78	49.53	2.58%	Hexadecanoic acid	Fatty Acid
79	50.34	3.88%	Ethyl hexadecanoate	Fatty Acid Ester
80	50.55	0.13%	Eicosane	Alkane
81	50.79	2.03%	1-Eicosene	Diterpene
82	51.12	0.26%	48.16 Geranyl linalool<E,E->	Sesquiterpenol
83	51.25	0.07%	48.09 Isopropyl hexadecanoate	0.00
84	51.46	0.19%	Kaur-16-ene	Diterpene
85	52.25	0.37%	UK	
86	52.55	0.52%	UK	
87	52.78	0.10%	1-Octadecanol	Diterpenol
88	53.25	0.29%	Methyl linoleate	Fatty Acid Ester
89	53.40	0.38%	UK	
90	53.49	0.04%	Methyl oleate	Fatty Acid Ester
91	53.66	5.23%	Heneicosane	Alkane
92	53.81	2.59%	Phytol	Diterpenol
93	54.36	0.07%	Methyl octadecanoate	Diterpene Ester
94	54.75	3.61%	Linoleic acid	Fatty Acid
95	54.90	12.46%	Ethyl alpha-linolenate	Fatty Acid Ester
96	55.89	2.11%	UK	
97	55.96	1.72%	UK	
98	56.34	1.08%	Ethyl octadecanoate	Diterpene Ester
99	56.54	0.21%	Docosane	Alkane
100	56.76	0.13%	53.82 Octadecanol acetate	0.00
101	56.86	0.42%	Phytyl acetate	Diterpene Ester
102	58.02	0.44%	UK	
103	58.15	0.42%	UK	
104	58.38	4.20%	Tricosane	Alkane
105	59.37	0.12%	Tetracosane	Alkane
106	59.51	0.42%	UK	
107	60.12	1.05%	Pentacosane	Alkane
108	60.30	1.02%	UK	