

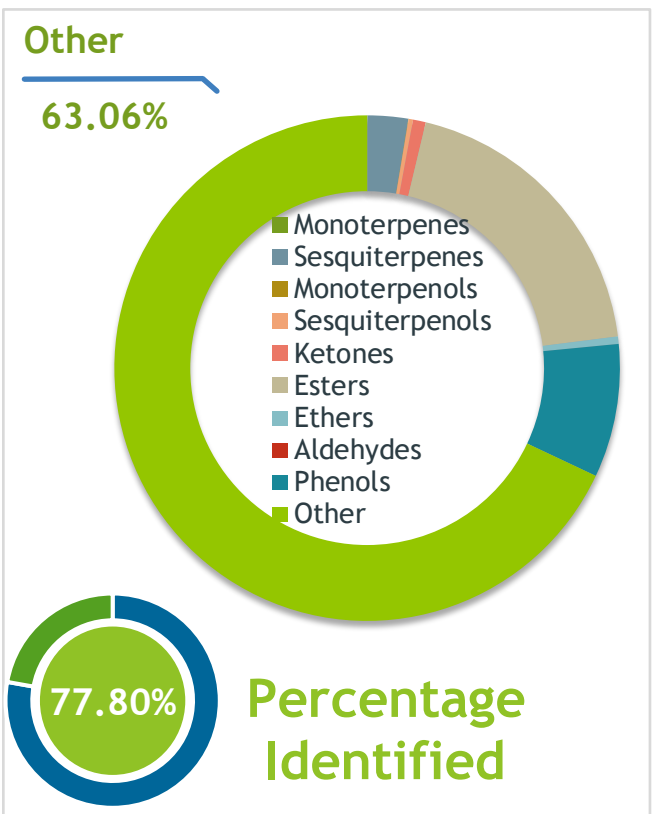
Client  **Source**

Blue Lotus Absolute (Nymphaea caerulea)
TH-59364 - Thailand

Sample Blue Lotus Absolute (Nymphaea caerulea)
 Identification #: TH-59364
 Type:..... Essential Oil
 CAS Number:... 0
 Nature's Gift

Properties Country Of Origin | Thailand
 Specific Gravity | NT
 Refractive Index | NT

Primary 11.42% | Citronellyl tiglate
10.54% | Nonadecane
7.10% | Benzyl alcohol



Result 
12/2/2023

Conclusion No adulterants, diluents, or contaminants were detected via this method. This oil meets the expected profile for genuine Essential Oil of Blue Lotus Absolute (Nymphaea caerulea)
 Internal Number: | EVS-5948


Essential Validation Services
 747 SW 2nd Ave IMB 12 Suite 306
 Gainesville, FL 32601
 317.361.5044 |
<https://essentialvalidationservices.com/>
Alan Christen

Monoterpenes	0.02%
Sesquiterpenes	2.40%
Monoterpenols	0.02%
Sesquiterpenols	0.26%
Ketones	0.76%
Esters	17.87%
Ethers	0.44%
Aldehydes	0.00%
Phenols	7.92%
Other	63.06%

ESSENTIAL VALIDATION SERVICES | 747 SW 2ND AVE GAINESVILLE, FLORIDA 32601 | 317-361-5044

Client



Source

Blue Lotus Absolute (*Nymphaea caerulea*)

TH-59364

Total Percentage		77.80%		
Number	RT	Area %	Compound Name	Chemical Family
1	4.36	0.03%	Hexan-2-ol	Aliphatic Alcohol
2	5.30	0.05%	Isovaleric acid	Aliphatic Acid
3	9.47	0.05%	Benzaldehyde	Simple Phenolic
4	12.59	7.10%	Benzyl alcohol	Simple Phenolic
5	14.48	0.28%	para-Cresol	Phenol
6	15.24	0.05%	Methyl benzoate	Phenolic Ester
7	15.58	0.02%	Linalool	Monoterpenol
8	16.04	0.26%	2-Phenylethanol	Simple Phenolic
9	18.38	0.80%	Benzyl acetate	Phenolic Ester
10	19.14	0.40%	Ethyl benzoate	Phenolic Ester
11	19.58	0.06%	15.27 Cresol<2-methoxy-para->	0.00
12	22.54	0.20%	para-Anisaldehyde	Simple Phenolic
13	22.68	0.08%	18.29 Benzyl propanoate	0.00
14	23.84	0.44%	Anisalcohol	Phenolic Ether
15	24.88	0.03%	Cinnamyl alcohol	Phenylpropanoid
16	29.03	0.02%	Tetradecane	Alkane
17	29.35	0.06%	25.15 Ionol<beta->	0.00
18	29.61	0.04%	25.13 Anisyl acetate<para->	0.00
19	29.76	0.04%	(E)-alpha-Ionone	Terpene Ketone/Aroma Chemical
20	30.24	0.33%	trans-alpha-Bergamotene	Sesquiterpene
21	30.89	0.02%	Geranylacetone	Monoterpene
22	31.13	0.61%	(E)-beta-Farnesene	Sesquiterpene
23	32.07	0.19%	(E)-beta-Ionone	Sesquiterpene
24	32.67	0.03%	(Z,E)-alpha-Farnesene	Sesquiterpene
25	32.78	0.04%	Zingiberene	Sesquiterpene
26	33.13	4.33%	Pentadecane	Alkane
27	33.21	0.36%	(E,E)-alpha-Farnesene	Sesquiterpene
28	33.30	0.10%	beta-Bisabolene	Sesquiterpene
29	33.90	0.74%	beta-Sesquiphellandrene	Sesquiterpene
30	36.74	0.03%	Ethyl dodecanoate	Monoterpene Ester
31	38.41	0.03%	34.74 Methyl jasmonate<Z->	0.00
32	39.52	11.42%	Citronellyl tiglate	Monoterpene Ester
33	39.82	6.82%	35.64 Tetradecanol<n->	0.00
34	40.55	0.76%	2-Pentadecanone	Sesquiterpene Ketone
35	40.70	1.43%	Heptadecane	Alkane

Client



Source

Blue Lotus Absolute (*Nymphaea caerulea*)
TH-59364

Number	RT	Area %	Compound Name	Chemical Family
36	42.8	0.21%	Benzyl benzoate	Alkane
37	43.95	0.09%	Ethyl tetradecanoate	Monoterpene Ester
38	46.64	0.30%	Nonadecene	Alkene
39	46.87	0.26%	1-Hexadecanol	Sesquiterpenol
40	47.55	10.54%	Nonadecane	Alkane
41	49.57	0.21%	Hexadecanoic acid	Fatty Acid
42	50.53	1.25%	Ethyl hexadecanoate	Fatty Acid Ester
43	50.77	0.09%	Eicosane	Alkane
44	50.99	3.24%	1-Eicosene	Diterpene
45	51.71	0.24%	Kaur-16-ene	Diterpene
46	53.47	0.08%	Methyl linoleate	Fatty Acid Ester
47	53.85	5.30%	Heneicosane	Alkane
48	54.02	5.39%	Phytol	Diterpenol
49	55.06	0.05%	Linoleic acid	Fatty Acid
50	55.48	1.64%	Ethyl linoleate	Fatty Acid Ester
51	55.64	1.26%	Ethyl alpha-linolenate	Fatty Acid Ester
52	56.10	5.91%	UK	
53	56.16	2.73%	UK	
54	56.56	0.25%	Ethyl octadecanoate	Diterpene Ester
55	56.76	0.15%	Docosane	Alkane
56	56.96	0.16%	53.82 Octadecanol acetate	0.00
57	57.05	0.39%	Phytyl acetate	Diterpene Ester
58	58.47	3.50%	Tricosane	Alkane
59	59.46	0.04%	Tetracosane	Alkane
60	60.19	0.58%	Pentacosane	Alkane
61	60.67	1.05%	UK	
62	61.30	0.12%	Heptacosane	Alkane
63	61.61	1.23%	UK	
64	61.66	1.05%	UK	
65	61.90	5.13%	Squalene	Triterpene
66	62.35	0.08%	Nonacosane	Alkane

ESSENTIAL VALIDATION SERVICES | 747 SW 2ND AVE GAINESVILLE, FLORIDA 32601 | 317-361-5044

Client



Source

Blue Lotus Absolute (Nymphaea caerulea)

TH-59364

ESSENTIAL VALIDATION SERVICES | 747 SW 2ND AVE GAINESVILLE, FLORIDA 32601 | 317-361-5044