

Rosemary ct Cineole *Rosmarinus officinalis ct cineole*

Batch No. TN-59378

Tunisia

Monoterpenes 26.89%

α pinene	13.29
β pinene	4.70
camphene	4.20
para cymene	1.47
myrcene	1.14
γ terpinene	0.61
α terpinene	0.49
terpinolene	0.28
α phellandrene	0.16
tricyclene	0.15
α thujene	0.15
(E) β ocimene	0.06
sabinene	0.05
para cymenene	0.04
thuja-2,4(10)-diene	0.03
δ 3 carene	0.03
hashishene	0.02
pseudolimonene	0.02

Monoterpenols 7.34%

borneol	3.29
α terpineol	2.14
linalool	0.95
terpinen-4-ol	0.64
neo-isopulegol	0.07
fenchol	0.06
trans-pinocarveol	0.05
trans-sabinene hydrate	0.05
camphene hydrate	0.03
para cymen-8-ol	0.03
trans-2-pinanol	0.02
citronellol	0.01

Sesquiterpenes 4.21%

β caryophyllene	3.65
α humulene	0.38
β bisabolene	0.04
α copaene	0.03
α ylangene	0.03
isocaryophyllene	0.02
δ cadinene	0.02
allo-aromadendrene	0.02
γ muurolene	0.02

Esters 0.55%

bornyl acetate	0.54
bornyl formate	0.01

Ketones 14.89%

camphor	14.84
octan-3-one	0.05
pinocamphone	
pinocarvone	

Ethers 45.76%

1,8 cineole	45.65
caryophyllene oxide	0.11

Aldehydes 0.03%

α campholene aldehyde	0.03
-----------------------	------

Other 0.33%

1-octen-3-ol	0.18
unknown	0.15

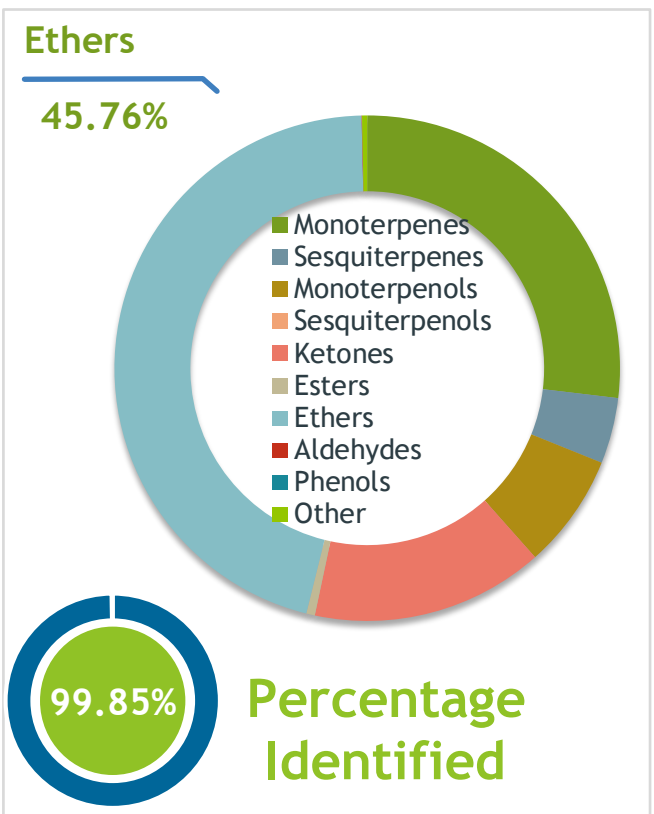
Client	 Nature's Gift	Source	
--------	---	--------	--

Rosemary Cineole (*Rosmarinus officinalis*)
TN-59378 - Tunisia

Sample	Rosemary Cineole (<i>Rosmarinus officinalis</i>) Identification #: TN-59378 Type:..... Essential Oil CAS Number:... 8000-25-7 <p style="text-align: center; color: green;">Nature's Gift</p>
--------	--

Properties	Country Of Origin Tunisia Specific Gravity NT Refractive Index NT
------------	---

Primary	<table border="0"> <tr> <td style="text-align: right; color: blue;"><u>45.65%</u></td> <td style="text-align: left; color: green;"><u>1,8-Cineole</u></td> </tr> <tr> <td style="text-align: right; color: blue;"><u>14.84%</u></td> <td style="text-align: left; color: green;"><u>Camphor</u></td> </tr> <tr> <td style="text-align: right; color: blue;"><u>13.29%</u></td> <td style="text-align: left; color: green;"><u>alpha-Pinene</u></td> </tr> </table>	<u>45.65%</u>	<u>1,8-Cineole</u>	<u>14.84%</u>	<u>Camphor</u>	<u>13.29%</u>	<u>alpha-Pinene</u>
<u>45.65%</u>	<u>1,8-Cineole</u>						
<u>14.84%</u>	<u>Camphor</u>						
<u>13.29%</u>	<u>alpha-Pinene</u>						



Result	 3/4/2024
--------	---

Conclusion	<p>No adulterants, diluents, or contaminants were detected via this method. This oil meets the expected profile for genuine Essential Oil of Rosemary Cineole (<i>Rosmarinus officinalis</i>)</p> <p>Internal Number: EVS-6070</p>
------------	--


Essential Validation Services
 747 SW 2nd Ave IMB 12 Suite 306
 Gainesville, FL 32601
 317.361.5044 |
<https://essentialvalidationservices.com/>


Monoterpenes	26.89%	26.89
Sesquiterpenes	4.21%	4.21
Monoterpenols	7.34%	7.34
Sesquiterpenols	0.00%	0.00
Ketones	14.89%	14.89
Esters	0.55%	0.55
Ethers	45.76%	45.76
Aldehydes	0.03%	0.03
Phenols	0.00%	0.00
Other	0.33%	0.33

ESSENTIAL VALIDATION SERVICES | 747 SW 2ND AVE GAINESVILLE, FLORIDA 32601 | 317-361-5044

Client



Source

Rosemary Cineole (*Rosmarinus officinalis*)

TN-59378

Total Percentage		99.85%		
Number	RT	Area %	Compound Name	Chemical Family
1	7.78	0.02%	Hashishene	Monoterpene
2	7.85	0.15%	Tricyclene	Monoterpene
3	8.02	0.15%	alpha-Thujene	Monoterpene
4	8.28	13.29%	alpha-Pinene	Monoterpene
5	8.88	4.20%	Camphene	Monoterpene
6	9.05	0.03%	Thuja-2,4(10)-diene	Monoterpene
7	9.83	0.05%	Sabinene	Monoterpene
8	9.99	4.70%	beta-Pinene	Monoterpene
9	10.21	0.18%	1-Octen-3-ol	Aliphatic Alcohol
10	10.40	0.05%	Octan-3-one	Aliphatic Ketone
11	10.57	1.14%	Myrcene	Monoterpene
12	11.11	0.02%	Pseudolimonene	Monoterpene
13	11.22	0.16%	alpha-Phellandrene	Monoterpene
14	11.32	0.03%	delta-3-Carene	Monoterpene
15	11.69	0.49%	alpha-Terpinene	Monoterpene
16	12.04	1.47%	para-Cymene	Monoterpene
17	12.38	45.65%	1,8-Cineole	Monoterpene Ether
18	12.61	0.06%	(E)-beta-Ocimene	Monoterpene
19	13.54	0.61%	gamma-Terpinene	Monoterpene
20	14.06	0.05%	trans-Sabinene hydrate	Monoterpenol
21	14.76	0.28%	Terpinolene	Monoterpene
22	14.98	0.04%	para-Cymenene	Monoterpene
23	15.49	0.95%	Linalool	Monoterpenol
24	16.28	0.06%	Fenchol	Monoterpenol
25	16.54	0.02%	trans-2-Pinanol	Monoterpenol
26	16.62	0.03%	alpha-Campholene aldehyde	Monoterpene Aldehyde
27	17.24	0.05%	trans-Pinocarveol	Monoterpenol
28	17.51	14.84%	Camphor	Monoterpene Ketone
29	17.61	0.07%	neo-Isopulegol	Monoterpenol
30	17.86	0.03%	Camphene hydrate	Monoterpenol
31	18.67	3.29%	Borneol	Monoterpenol
32	19.09	0.64%	Terpinen-4-ol	Monoterpenol
33	19.43	0.03%	para-Cymen-8-ol	Monoterpenol
34	19.78	2.14%	alpha-Terpineol	Monoterpenol
35	21.23	0.01%	Bornyl formate	Monoterpene Ester

ESSENTIAL VALIDATION SERVICES | 747 SW 2ND AVE GAINESVILLE, FLORIDA 32601 | 317-361-5044

