



316 Old Hickory Blvd East, Madison, TN 37115

tel (615)612-4270 fax (615)860-9171

sold@naturesgift.com

Balancing Body, Mind and Spirit with Pure Essential Oils

Since 1995

www.naturesgift.com

Rosemary ct Camphor

Rosmarinus officinalis ct camphor

Batch No. SP-59047

Spain

Monoterpenes	44.2%
α pinene	18.29
camphene	8.42
limonene	4.39
myrcene	3.44
β pinene	3.07
meta-cymene	2.03
γ terpinene	1.16
terpinolene	0.75
α terpinene	0.60
δ 3 carene	0.52
α phellandrene	0.42
tricyclene	0.32
thuja-2,4(10)-diene	0.28
(Z) β ocimene	0.16
α thujene	0.12
para cymenene	0.09
(E) β ocimene	0.03
hashishene	0.03
pseudolimonene	0.03
alloocimene	0.02
sabinene	0.02
α fenchene	0.01

Monoterpenols	8.7%
borneol	3.91
α terpineol	1.89
linalol	1.19
terpinen-4-ol	1.14
thymol	0.11
camphene hydrate	0.07
para cymen 8-ol	0.07
fenchol	0.06
trans-pinocarveol	0.06
(Z) myrtanol	0.05
citronellol	0.05
trans-carveol	0.03
(Z) para-menth-2-en-1-ol	0.02
hotrienol	0.02
trans-sabinene hydrate	0.02
neo-isopulegol	0.01

Sesquiterpenes	3.48%
cis + β caryophyllene	2.27
α humulene	0.90
α ylangene	0.09
β bisabolene	0.07
β cadinene	0.06
γ muurolene	0.05
α copaene	0.04
aromadendrene	0.03
6,9 guaiadiene	0.02
amorpha-4,7(11)-diene	0.02
α amorphene	0.02
γ calacorene	0.02
β sesquiphellandrene	0.01

Ethers	19.35%
1,8 cineole	19.31
humulene epoxide II	0.04

Sesquiterpenols	0.12%
longipinanol	0.10
pogostol	0.02

Aldehydes	0.03%
α campholene aldehyde	0.03

Ketones	21.32%
camphor	18.2
verbenone	1.94
octan-3-one	0.75
pinocamphone	0.16
fenchone	0.13
pinocarvone	0.09
mesityl oxide	0.02
piperitone	0.02
pulegone	0.01

Phenols	0.04%
methyl eugenol	0.02
eugenol	0.01
methyl chavicol	0.01

Esters	1.91%
bornyl acetate	1.91

Other	0.32%
1-octen-3-ol	0.23
3-octanol	0.09

Raw Material: *Rosmarinus officinalis L. ct camphor*

INCI Name: ROSMARINUS OFFICINALIS FLOWER OIL (Syn : ROSMARINUS OFFICINALIS LEAF OIL)

Production Steam Dist., leaves & flowers

Date of Analysis 6/6/2020

Rosemary (*Rosmarinus officinalis*)
SP-59047

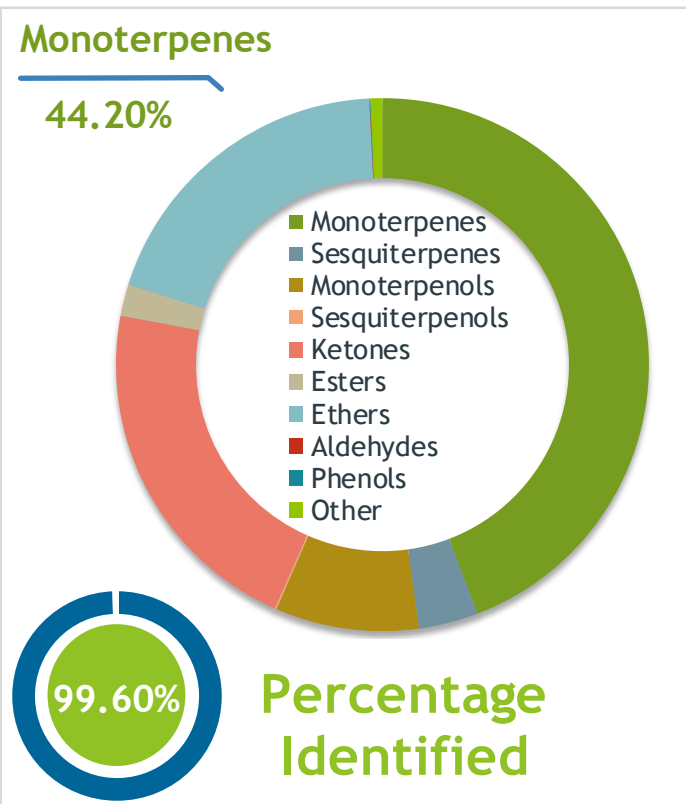
Client  **Source** 

Sample Rosemary (*Rosmarinus officinalis*)
Batch #:..... SP-59047
Type:..... Essential Oil
CAS Number:... 8000-25-7
Nature's Gift

Client  **Website** 

Primary

19.31%	1,8-Cineole
18.29%	alpha-Pinene
18.20%	Camphor



Result 

Conclusion No adulterants, diluents, or contaminants were detected via this method. This oil meets the expected profile for genuine Essential Oil of Rosemary (*Rosmarinus officinalis*)

Internal Number: | EVS-3714


Essential Validation Services
747 SW 2nd Ave IMB 12 Suite 306
Gainesville, FL 32601
317.361.5044 | <https://essentialvalidationservices.com/>
adam@essentialvalidationservices.com


Monoterpenes	44.20%	44.20%
Sesquiterpenes	3.61%	3.61%
Monoterpenols	8.70%	8.70%
Sesquiterpenols	0.12%	0.12%
Ketones	21.32%	21.32%
Esters	1.91%	1.91%
Ethers	19.35%	19.35%
Aldehydes	0.03%	0.03%
Phenols	0.04%	0.04%
Other	0.72%	0.72%

ESSENTIAL VALIDATION SERVICES | 747 SW 2ND AVE GAINESVILLE, FLORIDA 32601 | 317-361-5044

- Essential Oil testing is performed by using qualitative GC-MS. Method: SOP.T.01 Client Method
- This report may not be published without the consent of Essential Validation Services.
- Chromatograph image may be requested
- This report is valid for 1 year from the analyzed date

Client



Source

Rosemary (*Rosmarinus officinalis*)

SP-59047

Total Percentage		99.60%		
Number	RT	Area %	Compound Name	Chemical Family
1	4.40	0.02%	Mesityl oxide	Aliphatic Ketone
2	8.06	0.03%	Hashishene	Monoterpene
3	8.14	0.32%	Tricyclene	Monoterpene
4	8.31	0.12%	alpha-Thujene	Monoterpene
5	8.60	18.29%	alpha-Pinene	Monoterpene
6	8.80	0.01%	alpha-Fenchene	Monoterpene
7	9.20	8.42%	Camphene	Monoterpene
8	9.36	0.28%	Thuja-2,4(10)-diene	Monoterpene
9	10.15	0.02%	Sabinene	Monoterpene
10	10.33	3.07%	beta-Pinene	Monoterpene
11	10.51	0.23%	1-Octen-3-ol	Aliphatic Alcohol
12	10.71	0.75%	Octan-3-one	Aliphatic Ketone
13	10.91	3.44%	Myrcene	Monoterpene
14	11.24	0.09%	3-Octanol	Aliphatic Alcohol
15	11.46	0.03%	Pseudolimonene	Monoterpene
16	11.57	0.42%	alpha-Phellandrene	Monoterpene
17	11.68	0.52%	delta-3-Carene	Monoterpene
18	12.05	0.60%	alpha-Terpinene	Monoterpene
19	12.38	2.03%	meta-Cymene	Monoterpene
20	12.62	4.39%	Limonene	Monoterpene
21	12.73	19.31%	1,8-Cineole	Monoterpene Ether
22	12.97	0.16%	(Z)-beta-Ocimene	Monoterpene
23	13.43	0.03%	(E)-beta-Ocimene	Monoterpene
24	13.92	1.16%	gamma-Terpinene	Monoterpene
25	14.46	0.02%	trans-Sabinene hydrate	Monoterpenol
26	15.15	0.75%	Terpinolene	Monoterpene
27	15.23	0.13%	Fenchone	Monoterpene Ketone
28	15.35	0.09%	para-Cymenene	Monoterpene
29	15.87	1.19%	Linalool	Monoterpenol
30	16.01	0.02%	Hotrienol	Monoterpenol
31	16.68	0.06%	Fenchol	Monoterpenol
32	16.93	0.02%	cis-para-Menth-2-en-1-ol	Monoterpenol
33	17.02	0.03%	alpha-Campholene aldehyde	Monoterpene Aldehyde
34	17.19	0.02%	Alloocimene	Monoterpene
35	17.67	0.06%	trans-Pinocarveol	Monoterpenol

ESSENTIAL VALIDATION SERVICES | 747 SW 2ND AVE GAINESVILLE, FLORIDA 32601 | 317-361-5044

- Essential Oil testing is performed by using qualitative GC-MS. Method: SOP.T.01 Client Method
 - This report may not be published without the consent of Essential Validation Services.
 - Chromatograph image may be requested
 - This report is valid for 1 year from the analyzed date

Client



Source



Rosemary (*Rosmarinus officinalis*)
SP-59047

Number	RT	Area %	Compound Name	Chemical Family
36	17.95	18.20%	Camphor	Monoterpenol
37	18.02	0.01%	neo-Isopulegol	Monoterpenol
38	18.28	0.07%	Camphene hydrate	Monoterpenol
39	18.62	0.09%	Pinocarvone	Monoterpene Ketone
40	19.10	3.91%	Borneol	Monoterpenol
41	19.25	0.16%	Pinocamphone	Monoterpene Ketone
42	19.51	1.14%	Terpinen-4-ol	Monoterpenol
43	19.83	0.07%	para-Cymen-8-ol	Monoterpenol
44	20.20	1.89%	alpha-Terpineol	Monoterpenol
45	20.35	0.01%	Methyl chavicol	Phenylpropanoid
46	20.69	1.94%	Verbenone	Monoterpene Ketone
47	21.31	0.03%	trans-Carveol	Monoterpenol
48	21.74	0.05%	Citronellol	Monoterpenol
49	22.11	0.01%	Pulegone	Monoterpene Ketone
50	22.51	0.05%	cis-Myrtanol	Monoterpenol
51	22.82	0.02%	Piperitone	Monoterpene Ketone
52	24.24	1.91%	Bornyl acetate	Monoterpene Ester
53	24.61	0.11%	Thymol	Monoterpenol
54	27.18	0.01%	Eugenol	Phenylpropanoid
55	27.94	0.09%	alpha-Ylangene	Sesquiterpene
56	28.22	0.04%	alpha-Copaene	Sesquiterpene
57	29.30	0.02%	Methyl eugenol	Phenylpropanoid
58	30.03	2.27%	cis-Caryophyllene	Sesquiterpene
59	30.38	Co-Eluting	beta-Caryophyllene	Sesquiterpene
60	30.98	0.02%	6,9-Guaiadiene	Sesquiterpene
61	31.28	0.03%	Aromadendrene	Sesquiterpene
62	31.50	0.90%	alpha-Humulene	Sesquiterpene
63	32.35	0.05%	gamma-Muurolene	Sesquiterpene
64	32.87	0.01%	beta-Selinene	Sesquiterpene
65	33.33	0.02%	alpha-Amorphene	Sesquiterpene
66	33.49	0.02%	Amorpha-4,7(11)-diene	Sesquiterpene
67	33.74	0.07%	beta-Bisabolene	Sesquiterpene
68	34.11	0.06%	beta-Cadinene	Sesquiterpene
69	34.34	0.01%	beta-Sesquiphellandrene	Sesquiterpene
70	34.95	0.02%	gamma-Calacorene	Sesquiterpene
71	36.47	0.10%	Longipinanol	Sesquiterpenol

ESSENTIAL VALIDATION SERVICES | 747 SW 2ND AVE GAINESVILLE, FLORIDA 32601 | 317-361-5044

- Essential Oil testing is performed by using qualitative GC-MS. Method: SOP.T.01 Client Method
 - This report may not be published without the consent of Essential Validation Services.
 - Chromatograph image may be requested
 - This report is valid for 1 year from the analyzed date

Client



Source



Rosemary (*Rosmarinus officinalis*)

72	37.54	0.04%	Humulene epoxide II	Sesquiterpene Ether
73	39.29	0.02%	Pogostol	Sesquiterpenol

ESSENTIAL VALIDATION SERVICES | 747 SW 2ND AVE GAINESVILLE, FLORIDA 32601 | 317-361-5044

- Essential Oil testing is performed by using qualitative GC-MS. Method: SOP.T.01 Client Method
- This report may not be published without the consent of Essential Validation Services.
- Chromatograph image may be requested
- This report is valid for 1 year from the analyzed date