

Client



Source



Peppermint (*Mentha x piperita*)

EVS-2026-NG-16

Sample

Peppermint (*Mentha x piperita*)

Batch #: HU-59543
Type: Essential Oil
Origin: Hungary
CAS #: 8006-90-4

Client

NATURE'S GIFT

Properties

RI: NT
SG: NT

Primary

42.96% | Menthol
19.75% | Menthone
7.07% | 1,8-Cineole
5.91% | Menthyl acetate

Result



Pass
 Meets specifications

ANALYSIS SUMMARY
Total Compounds: 65

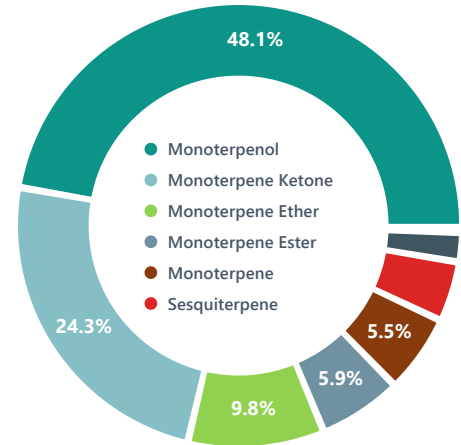
Lab



Essential Validation Services

EO Testing Lab
 240 Goose Hollow Road
 Berthoud, Colorado 80513
 Phone: (317) 361-5044
essentialvalidationservices.com

CHEMICAL FAMILY BREAKDOWN



TOTAL CONTENT IDENTIFIED

98.4% identified
 1.6% unidentified

Conclusion

PROFESSIONAL ANALYSIS SUMMARY

The chromatographic analysis of this Essential Oil sample accounted for 98.4% of the total sample composition. No adulterants, diluents, or contaminants were detected via this method. This oil meets the expected profile for genuine Peppermint (*Mentha x piperita*) from Hungary.

Adam Christensen • Mar 21, 2026

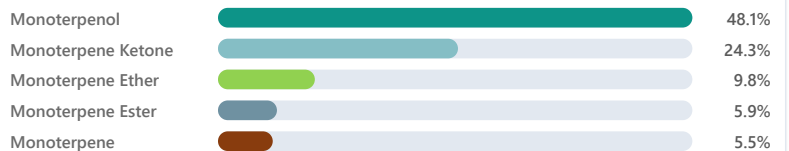
Adam Christensen

Analyst Signature

Date

Mar 21, 2026

CHEMICAL FAMILY DISTRIBUTION



Client



Source



Peppermint (*Mentha x piperita*)

EVS-2026-NG-16

Professional Analysis Summary

1 Sample Analysis

This Peppermint (*Mentha x piperita*) sample shows 65 detected compounds (65 identified, 100.0% rate).

2 Major Components

Predominant: **Menthol** (43.0%), **Menthone** (19.8%), **1,8-Cineole** (7.1%), +6 others.

3 Chemical Profile

11 chemical families: Monoterpenol, Monoterpene Ketone, Monoterpene Ether, +8 others.

4 Quality Assessment

Analysis complete for Peppermint (*Mentha x piperita*). No literature standard comparison available - assessment based on analytical data only.

Client



Source

**Peppermint** (*Mentha x piperita*)

EVS-2026-NG-16

Total Percentage:

98.38%

Number	RT	Area %	Compound Name	Chemical Family
1	10.36	0.02%	alpha-Thujene	Monoterpene
2	10.65	0.78%	alpha-Pinene	Monoterpene
3	11.08	0.08%	3-Methyl cyclohexanone	Aliphatic Ketone
4	11.16	0.02%	Camphene	Monoterpene
5	11.42	0.01%	1-Heptanol	Aliphatic Alcohol
6	11.82	0.14%	Sabinene	Monoterpene
7	12.03	0.55%	beta-Pinene	Monoterpene
8	12.16	0.20%	Myrcene	Monoterpene
9	12.23	0.01%	3-Octanol	Aliphatic Alcohol
10	12.42	0.06%	7.03 Menthane<trans-p->	Unknown
11	12.83	0.05%	alpha-Phellandrene	Monoterpene
12	13.24	0.04%	alpha-Terpinene	Monoterpene
13	13.50	0.26%	para-Cymene	Monoterpene
14	13.69	2.88%	Limonene	Monoterpene
15	13.76	0.34%	beta-Phellandrene	Monoterpene
16	13.84	7.07%	1,8-Cineole	Monoterpene Ether
17	14.16	0.01%	(Z)-beta-Ocimene	Monoterpene
18	14.74	0.20%	gamma-Terpinene	Monoterpene
19	14.88	0.05%	1-Octanol	Aliphatic Alcohol
20	15.25	0.03%	cis-Linalool oxide (5) (furanoid)	Monoterpenol
21	15.85	0.03%	trans-Linalool oxide (5) (furanoid)	Monoterpenol
22	15.93	0.04%	Terpinolene	Monoterpene
23	16.13	0.02%	Linalool	Monoterpenol
24	17.10	0.02%	beta-Thujone	Monoterpene Ketone
25	17.78	0.03%	cis-para-Mentha-2,8-dien-1-ol	Monoterpenol
26	18.02	0.03%	cis-Sabinol	Monoterpenol
27	18.30	0.08%	Isopulegol	Monoterpenol
28	18.70	19.75%	Menthone	Monoterpene Ketone
29	18.95	0.33%	Lavandulol	Monoterpenol
30	19.08	2.78%	Menthofuran	Monoterpene Ether
31	19.09	2.91%	Neomenthol	Monoterpenol

Client



Source

**Peppermint** (*Mentha x piperita*)

EVS-2026-NG-16

Number	RT	Area %	Compound Name	Chemical Family
32	19.11	2.42%	Isomenthone	Monoterpene Ketone
33	19.24	0.04%	Borneol	Monoterpenol
34	19.50	42.96%	Menthol	Monoterpenol
35	19.58	0.80%	Isopulegone	Monoterpene Ketone
36	19.92	0.77%	Neoisomenthol	Monoterpenol
37	20.08	0.08%	Isomenthol	Monoterpenol
38	20.16	0.55%	alpha-Terpineol	Monoterpenol
39	20.28	0.09%	neo-Dihydrocarveol	Monoterpenol
40	21.40	0.02%	Citronellol	Monoterpenol
41	22.27	0.58%	Pulegone	Monoterpene Ketone
42	22.42	0.05%	Carvone	Monoterpene Ketone
43	22.54	0.01%	Geraniol	Monoterpenol
44	22.90	0.69%	Piperitone	Monoterpene Ketone
45	23.23	0.11%	1-Decanol	Monoterpenol
46	24.14	0.02%	Thymol	Monoterpenol
47	24.43	5.91%	Menthyl acetate	Monoterpene Ester
48	26.52	0.16%	delta-Elemene	Sesquiterpene
49	26.65	0.02%	Piperitenone	Sesquiterpene Ketone
50	27.15	0.02%	Eugenol	Phenylpropanoid
51	28.26	0.06%	alpha-Ylangene	Sesquiterpene
52	28.71	0.23%	beta-Bourbonene	Sesquiterpene
53	28.83	0.09%	beta-Elemene	Sesquiterpene
54	29.63	0.02%	cis-Caryophyllene	Sesquiterpene
55	29.75	0.11%	Longifolene	Sesquiterpene
56	30.12	0.21%	25.43 Ylangene<beta->	Unknown
57	30.21	2.70%	beta-Caryophyllene	Sesquiterpene
58	31.00	0.05%	Aromadendrene	Sesquiterpene
59	31.17	0.08%	beta-Copaene	Sesquiterpene
60	31.56	0.38%	allo-Aromadendrene	Sesquiterpene
61	32.36	0.05%	gamma-Murolene	Sesquiterpene
62	33.29	0.08%	Bicyclogermacrene	Sesquiterpene
63	33.42	0.13%	gamma-Cadinene	Sesquiterpene
64	34.18	0.04%	delta-Cadinene	Sesquiterpene

Client



Source



Peppermint (*Mentha x piperita*)

EVS-2026-NG-16

Number	RT	Area %	Compound Name	Chemical Family
65	36.79	0.03%	Caryophyllene oxide	Sesquiterpene Ether