

Client



Source

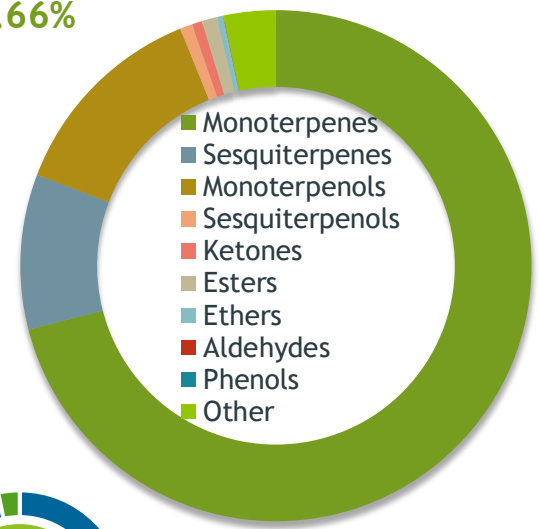
Mastic (*Pistacia lentiscus*)
ES-59259

Sample

Mastic (*Pistacia lentiscus*)
Batch #:..... ES-59259
Type:..... Essential Oil
CAS Number:.....
Nature's Gift

Monoterpenes

70.66%



Client

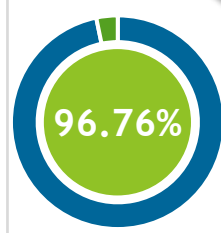


Website



Primary

20.46% Limonene
15.38% alpha-Pinene
14.05% Myrcene



Percentage Identified

Result



Conclusion

No adulterants, diluents, or contaminants were detected via this method. This oil meets the expected profile for genuine Essential Oil of Mastic (*Pistacia lentiscus*)

Internal Number: | EVS-5012



Essential Validation Services

747 SW 2nd Ave IMB 12 Suite 306
Gainesville, FL 32601

317.361.5044 | <https://essentialvalidationservices.com/>

Alan Christen

Monoterpenes	70.66%	70.66%
Sesquiterpenes	9.7	9.77%
Monoterpenols	13.0	13.06%
Sesquiterpenols		0.78%
Ketones		0.64%
Esters		0.97%
Ethers		0.39%
Aldehydes		0.02%
Phenols		0.00%
Other		3.28%

ESSENTIAL VALIDATION SERVICES | 747 SW 2ND AVE GAINESVILLE, FLORIDA 32601 | 317-361-5044

Client



Source

Mastic (*Pistacia lentiscus*)

ES-59259

Total Percentage		96.76%		
Number	RT	Area %	Compound Name	Chemical Family
1	3.89	0.01%	2-Hexanone	Aliphatic Ketone
2	5.52	0.01%	(E)-Hex-3-en-1-ol	Aliphatic Alcohol
3	5.81	0.01%	(E)-2-Hexenol	Aliphatic Alcohol
4	5.93	0.01%	1-Hexanol	Aliphatic Alcohol
5	7.58	0.36%	Tricyclene	Monoterpene
6	8.01	15.38%	alpha-Pinene	Monoterpene
7	8.59	1.87%	Camphene	Monoterpene
8	9.54	0.11%	Sabinene	Monoterpene
9	9.69	1.98%	beta-Pinene	Monoterpene
10	10.10	0.01%	6-Methyl-5-hepten-2-one	Aliphatic Ketone
11	10.30	14.05%	Myrcene	Monoterpene
12	10.82	0.03%	Pseudolimonene	Monoterpene
13	10.92	3.83%	alpha-Phellandrene	Monoterpene
14	11.02	0.04%	delta-3-Carene	Monoterpene
15	11.31	0.25%	1,4-Cineole	Monoterpene Ether
16	11.39	3.27%	alpha-Terpinene	Monoterpene
17	11.72	1.48%	para-Cymene	Monoterpene
18	11.96	20.46%	Limonene	Monoterpene
19	12.30	0.10%	(Z)-beta-Ocimene	Monoterpene
20	12.76	0.34%	(E)-beta-Ocimene	Monoterpene
21	13.23	4.86%	gamma-Terpinene	Monoterpene
22	13.91	0.01%	1-Octanol	Aliphatic Alcohol
23	14.44	2.37%	Terpinolene	Monoterpene
24	14.65	0.11%	para-Cymenene	Monoterpene
25	14.75	0.19%	2-Nonanone	Monoterpene Ketone
26	15.17	0.18%	Linalool	Monoterpenol
27	15.31	0.06%	2-Nonanol	Monoterpenol
28	15.49	0.09%	Isoamyl isovalerate	Aliphatic Ester
29	15.59	0.02%	2-Methyl Butyl Isovalerate	Monoterpene Ester
30	15.94	0.25%	Fenchol	Monoterpenol
31	16.13	0.02%	Myrcenol	Monoterpenol
32	16.20	0.01%	cis-para-Menth-2-en-1-ol	Monoterpenol
33	16.46	0.02%	Alloocimene	Monoterpene
34	16.75	0.04%	Terpinen-1-ol	Monoterpenol
35	17.15	0.01%	Camphor	Monoterpene Ketone

Client



Source

Mastic (*Pistacia lentiscus*)
ES-59259

Number	RT	Area %	Compound Name	Chemical Family
36	17.356	0.08%	cis-beta-Terpineol	Monoterpene Ketone
37	17.52	0.03%	Camphene hydrate	Monoterpenol
38	18.34	0.18%	Borneol	Monoterpenol
39	18.78	7.84%	Terpinen-4-ol	Monoterpenol
40	19.01	0.04%	Cryptone	Monoterpene Ketone
41	19.47	4.26%	alpha-Terpineol	Monoterpenol
42	19.68	0.03%	gamma-Terpineol	Monoterpenol
43	19.80	0.02%	cis-Pinocarveol	Monoterpenol
44	20.06	0.02%	Decanal	Aliphatic Aldehyde
45	21.17	0.02%	cis-3-Hexenyl isovalerate	Aliphatic Ester
46	21.64	0.01%	Carvone	Monoterpene Ketone
47	23.46	0.80%	Bornyl acetate	Monoterpene Ester
48	23.95	0.37%	2-Undecanone	Aliphatic Ketone
49	25.18	0.02%	Myrtenyl acetate	Monoterpene Ester
50	25.70	0.05%	delta-Elemene	Sesquiterpene
51	27.40	0.17%	alpha-Cubebene	Sesquiterpene
52	28.02	0.18%	beta-Elemene	Sesquiterpene
53	28.58	0.02%	beta-Longipinene	Sesquiterpene
54	29.20	4.28%	beta-Caryophyllene	Sesquiterpene
55	29.34	0.03%	Longifolene	Sesquiterpene
56	29.54	0.02%	Isocaryophyllene	Sesquiterpene
57	29.63	0.04%	Sibirene	Sesquiterpene
58	30.42	0.06%	beta-Gurjunene	Sesquiterpene
59	30.66	0.74%	alpha-Humulene	Sesquiterpene
60	30.84	0.16%	Aromadendrene	Sesquiterpene
61	31.40	0.33%	cis-Muurolo-4(14),5-diene	Sesquiterpene
62	31.70	0.59%	6,9-Guaiadiene	Sesquiterpene
63	32.16	0.13%	gamma-Gurjunene	Sesquiterpene
64	32.23	0.09%	gamma-Muuroloene	Sesquiterpene
65	32.32	0.07%	alpha-Selinene	Sesquiterpene
66	32.42	0.09%	trans-Cadina-1(6),4-diene	Sesquiterpene
67	32.50	0.66%	alpha-Amorphene	Sesquiterpene
68	32.85	0.20%	29.03 Farnesene<(E,E)-alpha->	0.00
69	32.93	0.03%	beta-Bisabolene	Sesquiterpene
70	33.04	0.23%	28.53 Muurolo-4(14),5-diene<trans->	0.00
71	33.29	1.79%	beta-Cadinene	Sesquiterpene

ESSENTIAL VALIDATION SERVICES | 74 SAW ZEE AVE GAINESVILLE, FLORIDA 32601 | 351-301-3044

Client



Source

4

Mastic (*Pistacia lentiscus*)
ES-59259

72	33.81	0.14%	alpha-Muurolene	Sesquiterpene
73	33.97	0.09%	gamma-Cadinene	Sesquiterpene
74	34.23	0.01%	trans-alpha-Bisabolene	Sesquiterpene
75	35.37	0.06%	Caryophyllenyl alcohol	Monoterpenol
76	35.63	0.14%	Caryophyllene oxide	Sesquiterpene Ether
77	35.81	0.03%	Palustrol	Sesquiterpenol
78	36.13	0.02%	trans-Sesquisabinene hydrate	Monoterpene Ester
79	37.15	0.07%	Ledol	Sesquiterpenol
80	37.44	0.09%	1,10-di-epi-Cubenol	Sesquiterpenol
81	37.59	0.03%	10-epi-gamma-Eudesmol	Sesquiterpenol
82	38.05	0.20%	T-Muurolol	Sesquiterpenol
83	38.15	0.07%	T-Cadinol	Sesquiterpenol
84	38.46	0.28%	alpha-Cadinol	Sesquiterpenol
85	39.64	0.01%	epi-alpha-Bisabolol	Sesquiterpenol

ESSENTIAL VALIDATION SERVICES | 74 SW 2nd AVE GAINESVILLE, FLORIDA 32601 | 317-561-5044

- Essential Oil testing is performed by using qualitative GC-MS. Method: SOP.T.01 Client Method
 - This report may not be published without the consent of Essential Validation Services.
 - Chromatograph image may be requested
 - This report is valid for 1 year from the analyzed date