



316 Old Hickory Blvd East, Madison, TN 37115  
tel (615)612-4270 fax (615)860-9171  
orderdesk@naturesgift.com  
Balancing Body, Mind Spirit with Pure Essential Oils  
Since 1995  
www.naturesgift.com

## Lime *Citrus aurantifolia*

Batch No. #MX-59312  
Mexico

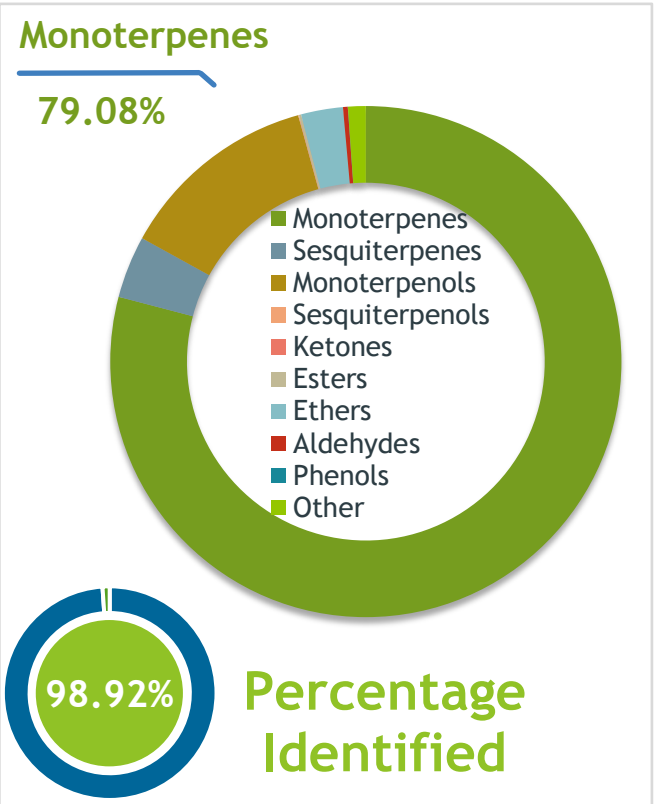
Monoterpenes	79.08%	Monoterpenols	12.67%	Sesquiterpenes	3.92%
limonene	44.34	$\alpha$ terpineol	8.42	$\beta$ bisabolene	1.11
$\gamma$ terpinene	12.59	$\gamma$ terpineol	1.18	(E,E) $\alpha$ farnesene	0.60
terpinolene	9.14	$\beta$ terpineol	0.61	trans $\alpha$ bergamotene	0.58
para-cymene	3.12	terpinen-1-ol	0.58	$\beta$ caryophyllene	0.37
$\alpha$ terpinene	2.63	fenchol	0.48	$\delta$ selinene	0.17
$\beta$ pinene	2.55	terpinen-4-ol	0.44	zonarene	0.14
myrcene	1.31	borneol	0.3	cis $\alpha$ bisabolene	0.10
$\alpha$ pinene	1.20	trans $\beta$ terpineol	0.21	cis $\alpha$ bergamotene	0.08
camphene	0.51	linalol	0.15	$\alpha$ humulene	0.07
(E) $\beta$ ocimene	0.45	para-cymen-8-ol	0.1	$\gamma$ elemene	0.07
$\alpha$ phellandrene	0.44	(Z) linalool oxide (5) (fura	0.08	$\gamma$ muurolene	0.07
para-cymenene	0.25	myrcenol	0.04	$\gamma$ selinene	0.07
(Z) $\beta$ ocimene	0.16	(E) ascaridol glycol	0.03	$\alpha$ selinene	0.06
$\alpha$ fenchene	0.15	geraniol	0.02	$\delta$ elemene	0.06
alloocimene	0.05	isoborneol	0.02	$\gamma$ curcumene	0.06
1,3,8-para-menthatriene	0.04	1-decanol	0.01	(E) $\beta$ farnesene	0.05
para-menthatriene	0.03			selina-3,7(11)-diene	0.05
$\alpha$ thujene	0.03			trans $\alpha$ bisabolene	0.04
2-carene	0.03	<b>Esters</b>	<b>0.16%</b>	$\beta$ elemene	0.04
pseudolimonene	0.02	neryl acetate	0.06	$\beta$ santalene	0.04
tricyclene	0.02	geranyl acetate	0.06	$\gamma$ cadinene	0.03
bornylene	0.01	(E) dehydroxy linalool ox	0.02	$\delta$ cadinene	0.02
sabinene	0.01	terpinen-4-yl acetate	0.02	aromadendrene	0.02
				trans $\gamma$ bisabolene	0.01
				$\alpha$ muurolene	0.01
<b>Aldehydes</b>	<b>0.3%</b>	<b>Other</b>	<b>0.05%</b>		
geranial	0.1	nonane	0.02	<b>Sesquiterpenols</b>	<b>0.09%</b>
decanal	0.08	para-menthylacetophenc	0.01	$\gamma$ eudesmol	0.03
neral	0.07	1-octanol	0.01	caryophyllenyl alcohol	0.04
nonanal	0.04	tridecane	0.01	$\alpha$ bisabolol	0.02
undecanal	0.01				
		<b>Oxides / Ethers</b>	<b>2.63%</b>		
		1,4 cineole	2.62		
		perillene	0.01		

Date of Analysis: 2/15/2023

Client	 Nature's Gift	Source	
--------	---	--------	--

Lime (*Citrus aurantifolia*)  
MX-59312

Sample	Lime ( <i>Citrus aurantifolia</i> )	
	Batch #:.....	MX-59312
	Type:.....	Essential Oil
	CAS Number:...	8008-26-2
Nature's Gift		



Client	 Nature's Gift	Website	
--------	--	---------	---

Primary	44.34%	Limonene
	12.59%	gamma-Terpinene
	9.14%	Terpinolene

Result	APPROVED
--------	----------

Conclusion	<p>No adulterants, diluents, or contaminants were detected via this method. This oil meets the expected profile for genuine Essential Oil of Lime (<i>Citrus aurantifolia</i>)</p> <p>Internal Number:   EVS-5476</p>
------------	---



Essential Validation Services

747 SW 2nd Ave IMB 12 Suite 306  
Gainesville, FL 32601

317.361.5044 |  
<https://essentialvalidationservices.com/>



Monoterpenes	79.08%	79.08%
Sesquiterpenes	3.94%	3.94%
Monoterpenols	12.71%	12.71%
Sesquiterpenols	0.05%	0.05%
Ketones	0.00%	0.00%
Esters	0.14%	0.14%
Ethers	2.65%	2.65%
Aldehydes	0.30%	0.30%
Phenols	0.01%	0.01%
Other	1.12%	1.12%

ESSENTIAL VALIDATION SERVICES | 747 SW 2ND AVE GAINESVILLE, FLORIDA 32601 | 317-361-5044

- Essential Oil testing is performed by using qualitative GC-MS. Method: SOP.T.01 Client Method  
 - This report may not be published without the consent of Essential Validation Services.  
 - Chromatograph image may be requested  
 - This report is valid for 1 year from the analyzed date

Client



Source

Lime (*Citrus aurantifolia*)

MX-59312

Total Percentage		98.92%		
Number	RT	Area %	Compound Name	Chemical Family
1	6.79	0.02%	Nonane	Alkane
2	6.90	0.01%	Bornylene	Monoterpene
3	7.51	0.02%	Tricyclene	Monoterpene
4	7.68	0.03%	alpha-Thujene	Monoterpene
5	7.92	1.20%	alpha-Pinene	Monoterpene
6	8.47	0.15%	alpha-Fenchene	Monoterpene
7	8.52	0.51%	Camphene	Monoterpene
8	9.47	0.01%	Sabinene	Monoterpene
9	9.62	2.55%	beta-Pinene	Monoterpene
10	10.01	0.02%	trans-Dehydroxy linalool oxide	Monoterpene Ether
11	10.21	1.31%	Myrcene	Monoterpene
12	10.34	0.03%	2-Carene	Monoterpene
13	10.74	0.02%	Pseudolimonene	Monoterpene
14	10.84	0.44%	alpha-Phellandrene	Monoterpene
15	11.24	2.62%	1,4-Cineole	Monoterpene Ether
16	11.33	2.63%	alpha-Terpinene	Monoterpene
17	11.69	3.12%	para-Cymene	Monoterpene
18	12.01	44.34%	Limonene	Monoterpene
19	12.24	0.16%	(Z)-beta-Ocimene	Monoterpene
20	12.69	0.45%	(E)-beta-Ocimene	Monoterpene
21	13.22	12.59%	gamma-Terpinene	Monoterpene
22	13.72	0.08%	cis-Linalool oxide (5) (furanoid)	Monoterpenol
23	13.84	0.01%	1-Octanol	Aliphatic Alcohol
24	14.42	9.14%	Terpinolene	Monoterpene
25	14.58	0.25%	para-Cymenene	Monoterpene
26	15.09	0.15%	Linalool	Monoterpenol
27	15.31	0.04%	Nonanal	Aliphatic Aldehyde
28	15.59	0.04%	1,3,8-para-Menthatriene	Monoterpene
29	15.73	0.01%	Perillene	Monoterpene Ether
30	15.86	0.48%	Fenchol	Monoterpenol
31	16.05	0.04%	Myrcenol	Monoterpenol
32	16.38	0.05%	Alloocimene	Monoterpene
33	16.55	0.03%	para-Menthatriene	Monoterpene
34	16.66	0.58%	Terpinen-1-ol	Monoterpenol
35	17.29	0.61%	beta-Terpineol	Monoterpenol

Client



Source

Lime (*Citrus aurantifolia*)

MX-59312

Number	RT	Area %	Compound Name	Chemical Family
36	17.85	0.02%	Isoborneol	Monoterpenol
37	18.11	0.21%	trans-beta-Terpineol	Monoterpenol
38	18.26	0.30%	Borneol	Monoterpenol
39	18.68	0.44%	Terpinen-4-ol	Monoterpenol
40	18.87	0.01%	para-Methylacetophenone	Simple Phenolic
41	19.06	0.10%	para-Cymen-8-ol	Monoterpenol
42	19.47	8.42%	alpha-Terpineol	Monoterpenol
43	19.64	1.18%	gamma-Terpineol	Monoterpenol
44	19.97	0.08%	Decanal	Aliphatic Aldehyde
45	21.36	0.07%	Neral	Monoterpene Aldehyde
46	21.99	0.02%	Geraniol	Monoterpenol
47	22.71	0.10%	Geranial	Monoterpene Aldehyde
48	22.93	0.03%	trans-Ascaridol glycol	Monoterpenol
49	23.01	0.01%	1-Decanol	Monoterpenol
50	24.12	0.02%	Terpinen-4-yl acetate	Monoterpene Ester
51	24.26	0.01%	Tridecane	Alkane
52	24.54	0.01%	Undecanal	Sesquiterpene Aldehyde
53	25.60	0.06%	delta-Elemene	Sesquiterpene
54	26.72	0.06%	Neryl acetate	Monoterpene Ester
55	27.57	0.06%	Geranyl acetate	Monoterpene Ester
56	27.92	0.04%	beta-Elemene	Sesquiterpene
57	28.60	0.02%	Longifolene	Sesquiterpene
58	28.93	0.08%	cis-alpha-Bergamotene	Sesquiterpene
59	29.09	0.37%	beta-Caryophyllene	Sesquiterpene
60	29.59	0.07%	gamma-Elemene	Sesquiterpene
61	29.77	0.58%	trans-alpha-Bergamotene	Sesquiterpene
62	30.32	0.02%	Aromadendrene	Sesquiterpene
63	30.56	0.07%	alpha-Humulene	Sesquiterpene
64	30.66	0.05%	(E)-beta-Farnesene	Sesquiterpene
65	30.80	0.04%	beta-Santalene	Sesquiterpene
66	31.35	0.07%	gamma-Selinene	Sesquiterpene
67	31.60	0.06%	gamma-Curcumene	Sesquiterpene
68	31.82	0.07%	gamma-Muurolene	Sesquiterpene
69	31.92	0.17%	delta-Selinene	Sesquiterpene
70	32.23	0.06%	alpha-Selinene	Sesquiterpene
71	32.40	0.01%	alpha-Muurolene	Sesquiterpene

