

Client



Source

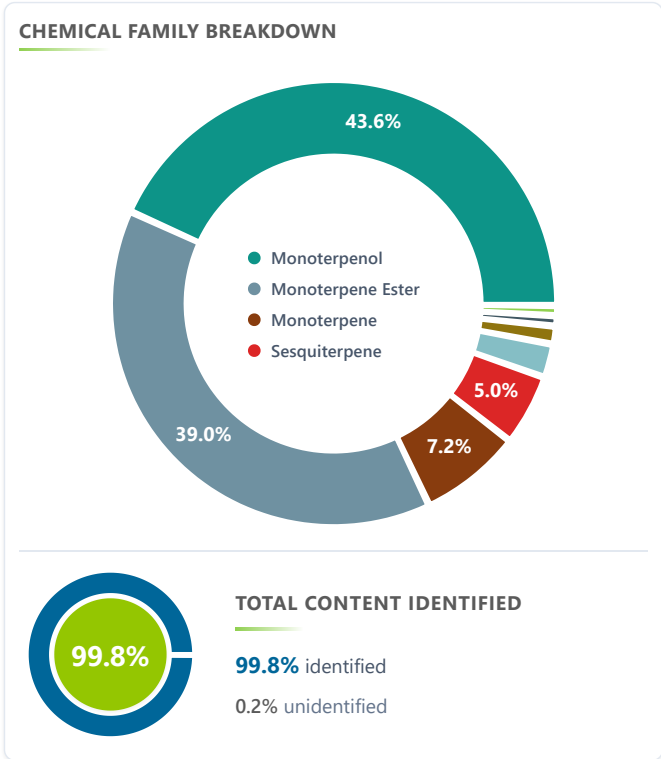


Lavender (*Lavandula angustifolia*)
EVS-2026-NG-8

Sample

Lavender (*Lavandula angustifolia*)

Batch #: FR-59532
Type: Essential Oil
Origin: France
CAS #: 8000-28-0



Client

NATURE'S GIFT


Properties

RI: NT
SG: NT

Primary

37.63% | Linalool
34.91% | Linalyl acetate
3.58% | beta-Caryophyllene
2.68% | alpha-Terpineol

Result



Pass
Meets specifications

ANALYSIS SUMMARY

Total Compounds: **69**

Conclusion

PROFESSIONAL ANALYSIS SUMMARY

Analysis of this Lavender (*Lavandula angustifolia*) Essential Oil sample was conducted against the ISO 3515:2002 (*Lavandula angustifolia*) standard specification. The chromatographic analysis accounted for 99.8% of the total sample composition. All major constituents were found to be within the expected ranges specified in the standard. No adulterants, diluents, or contaminants were detected via this method. This oil meets the expected profile for genuine Lavender (Maillette) (*Lavandula angustifolia*).

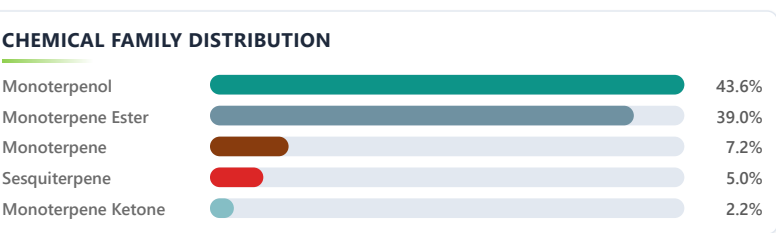
Adam Christensen • Mar 16, 2026

Adam Christensen Date
Analyst Signature Mar 6, 2026

Lab



Essential Validation Services
EO Testing Lab
240 Goose Hollow Road
Berthoud, Colorado 80513
Phone: (317) 361-5044
essentialvalidationservices.com



Client



Source

**Lavender** (*Lavandula angustifolia*)

EVS-2026-NG-8

Expected vs. Detected Components

Comparison against ISO 3515:2002 for Lavender (Maillette) (*Lavandula angustifolia*)

Compound	Expected	Detected	Status	Family
1 Linalyl acetate	33.00-46.00%	34.91%		Monoterpene Ester
2 Linalool	30.00-45.00%	37.63%		Monoterpenol
3 Octan-3-one	1.00-2.50%	-		Aliphatic Ketone
4 (Z)-beta-Ocimene	0.00-2.50%	0.83%		Monoterpene
5 (E)-beta-Ocimene	0.00-2.00%	0.98%		Monoterpene
6 Terpinen-4-ol	0.00-1.50%	-		Monoterpenol
7 alpha-Terpineol	0.50-1.50%	2.68%		Monoterpenol
8 Lavandulyl acetate	0.00-1.30%	-		Monoterpene Ester
9 Camphor	0.00-1.20%	-		Monoterpene Ketone
10 1,8-Cineole	0.00-0.50%	0.44%		Monoterpene Ether
11 Lavandulol	0.00-0.50%	-		Monoterpenol
12 Limonene	0.00-0.30%	1.14%		Monoterpene
13 beta-Phellandrene	0.00-0.20%	-		Monoterpene

Professional Analysis Summary

1 Sample Analysis

This Lavender (*Lavandula angustifolia*) sample shows 69 detected compounds (69 identified, 100.0% rate).

2 Major Components

Predominant: Linalool (37.6%), Linalyl acetate (34.9%), beta-Caryophyllene (3.6%), +8 others.

3 Chemical Profile

15 chemical families: Monoterpenol, Monoterpene Ester, Sesquiterpene, +12 others.

4 Quality Assessment

Sample meets specifications for Lavender (*Lavandula angustifolia*).

Client



Source

**Lavender** (*Lavandula angustifolia*)

EVS-2026-NG-8

Total Percentage:

99.81%

Number	RT	Area %	Compound Name	Chemical Family
1	6.45	0.01%	2-Methylbutyl alcohol	Aliphatic Alcohol
2	9.49	0.03%	2,5-Diethyltetrahydrofuran	Furan
3	10.41	0.03%	alpha-Thujene	Monoterpene
4	10.70	0.14%	alpha-Pinene	Monoterpene
5	11.73	0.07%	1-Octen-3-ol	Aliphatic Alcohol
6	11.86	0.20%	Sabinene	Monoterpene
7	12.08	1.51%	beta-Pinene	Monoterpene
8	12.21	1.42%	Myrcene	Monoterpene
9	12.35	0.02%	trans-Dehydroxy linalool oxide	Monoterpene Ether
10	12.86	0.02%	cis-Dehydroxylinalool oxide	Monoterpenol
11	13.29	0.03%	alpha-Terpinene	Monoterpene
12	13.37	0.03%	Hexyl acetate	Aliphatic Ester
13	13.55	0.26%	para-Cymene	Monoterpene
14	13.73	1.14%	Limonene ⚠	(0.00%-0.30%) Monoterpene
15	13.79	0.83%	(Z)-beta-Ocimene ✔	(0.00%-2.50%) Monoterpene
16	13.88	0.44%	1,8-Cineole ✔	(0.00%-0.50%) Monoterpene Ether
17	14.21	0.98%	(E)-beta-Ocimene ✔	(0.00%-2.00%) Monoterpene
18	14.80	0.23%	gamma-Terpinene	Monoterpene
19	15.30	0.10%	cis-Linalool oxide (5) (furanoid)	Monoterpenol
20	15.91	0.12%	trans-Linalool oxide (5) (furanoid)	Monoterpenol
21	15.98	0.22%	Terpinolene	Monoterpene
22	16.29	37.63%	Linalool ✔	(30.00%-45.00%) Monoterpenol
23	16.41	0.01%	Hotrienol	Monoterpenol
24	16.50	0.37%	1-Octenyl-3 acetate	Monoterpene Ester
25	17.02	0.41%	Octan-3-yl acetate	Aliphatic Ester
26	17.41	0.24%	Alloocimene	Monoterpene
27	18.36	0.01%	Isopulegol	Monoterpenol
28	18.70	0.29%	Menthone	Monoterpene Ketone
29	19.14	0.26%	Isomenthone	Monoterpene Ketone
30	19.43	2.56%	Menthol	Monoterpenol
31	19.68	1.44%	Isopinocampone	Monoterpene Ketone

Client



Source

**Lavender** (*Lavandula angustifolia*)

EVS-2026-NG-8

Number	RT	Area %	Compound Name	Chemical Family
32	19.81	0.04%	(Z)-3-Hexenyl butyrate	Aliphatic Ester
33	20.21	2.68%	alpha-Terpineol ⚠	Monoterpenol
34	20.45	0.14%	Methyl chavicol	Phenylpropanoid
35	20.58	0.07%	Myrtenal	Monoterpene Aldehyde
36	21.58	0.51%	Nerol	Monoterpenol
37	22.33	0.05%	Pulegone	Monoterpene Ketone
38	22.48	0.13%	Carvone	Monoterpene Ketone
39	22.74	34.91%	Linalyl acetate ✅	Monoterpene Ester
40	22.97	0.02%	Piperitone	Monoterpene Ketone
41	23.39	0.03%	Geranial	Monoterpene Aldehyde
42	24.12	0.01%	19.64 Linalool oxide acetate<trans->(pyranoid)	Unknown
43	24.48	0.21%	Menthyl acetate	Monoterpene Ester
44	25.90	0.07%	Myrtenyl acetate	Monoterpene Ester
45	26.75	0.06%	22.30 Carvomenthyl acetate<neoiso->	Unknown
46	26.87	0.06%	22.69 Dihydro carveol acetate<neoiso->	Unknown
47	27.25	1.22%	Neryl acetate	Monoterpene Ester
48	28.04	2.26%	Geranyl acetate	Monoterpene Ester
49	28.32	0.07%	alpha-Copaene	Sesquiterpene
50	28.77	0.04%	beta-Bourbonene	Sesquiterpene
51	28.89	0.16%	beta-Elemene	Sesquiterpene
52	29.01	0.04%	cis-Jasmone	Jasmonate
53	30.27	3.58%	beta-Caryophyllene	Sesquiterpene
54	30.60	0.04%	beta-Copaene	Sesquiterpene
55	31.20	0.24%	(Z)-beta-Farnesene	Sesquiterpene
56	31.66	0.15%	alpha-Humulene	Sesquiterpene
57	31.98	0.06%	allo-Aromadendrene	Sesquiterpene
58	32.43	0.01%	gamma-Murolene	Sesquiterpene
59	32.74	0.57%	Germacrene D	Sesquiterpene
60	33.35	0.01%	alpha-Murolene	Sesquiterpene
61	34.25	0.03%	delta-Cadinene	Sesquiterpene
62	34.42	0.08%	30.24 Liguloxide	Sesquiterpene Ester
63	35.24	0.34%	Elemol	Sesquiterpenol
64	35.50	0.02%	(E)-Nerolidol	Sesquiterpenol

Client



Source



Lavender (*Lavandula angustifolia*)

EVS-2026-NG-8

Number	RT	Area %	Compound Name	Chemical Family
65	36.86	0.17%	Caryophyllene oxide	Sesquiterpene Ether
66	37.18	0.51%	Viridiflorol	Sesquiterpenol
67	38.56	0.06%	gamma-Eudesmol	Sesquiterpenol
68	39.35	0.06%	beta-Eudesmol	Sesquiterpenol
69	39.44	0.05%	alpha-Eudesmol	Sesquiterpenol

