



316 Old Hickory Blvd East, Madison, TN 37115

tel (615)612-4270 fax (615)860-9171

sold@naturesgift.com

Balancing Body, Mind and Spirit with Pure Essential Oils

Since 1995

www.naturesgift.com

Eucalyptus Radiata

Eucalyptus radiata

Australia

Batch #AU-59300

Monoterpenes 15.68%

para cymene	1.25
(E) β ocimene	0.04
(Z) β ocimene	0.11
alloocimene	0.04
camphene	0.02
limonene	4.79
myrcene	0.79
terpinolene	0.21
α phellandrene	0.93
α pinene	2.65
α terpinene	0.36
α thujene	0.02
β pinene	0.52
γ terpinene	3.9
sabinene	0.02
para-cymenene	0.03

Monoterpenols 9.43%

α terpineol	8.10
terpinen-4-ol	1.09
δ terpineol	0.07
trans-pinocarveol	0.06
linalool	0.06
(Z) linalool oxide (5) (furanoid)	0.04
(Z) para-menth-2-en-1-ol	0.01

Aldehydes 0.32%

geranial	0.19
neral	0.13

Sesquiterpenes 0.1%

aromadendrene	0.02
viridiflorene	0.02
δ cadinene	0.02
isolekene	0.01
α gurjenene	0.01
allo-aromadendrene	0.01
bicyclogermacrene	0.01

Ethers 74.33%

1,8 cineole	74.33
-------------	-------

Esters 0.01%

α terpinyl acetate	0.01
---------------------------	------

Client



Source



Eucalyptus Radiata (Eucalyptus radiata)
AU-59300

Sample

Eucalyptus Radiata (Eucalyptus radiata)

Batch #:..... AU-59300

Type:..... Essential Oil

CAS Number:... 92201-64-4

Nature's Gift

Client



Website

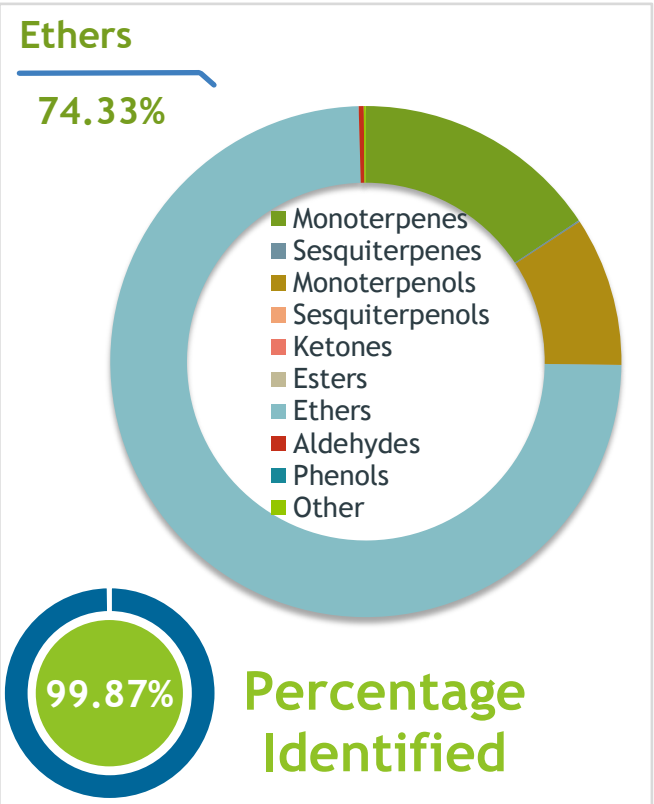


Primary

74.33% | 1,8-Cineole

8.10% | alpha-Terpineol

4.79% | Limonene





Conclusion

No adulterants, diluents, or contaminants were detected via this method. This oil meets the expected profile for genuine Essential Oil of Eucalyptus Radiata (Eucalyptus radiata)

Internal Number: | EVS-5444



Essential Validation Services

747 SW 2nd Ave IMB 12 Suite 306
Gainesville, FL 32601

317.361.5044 |
<https://essentialvalidationservices.com/>



Monoterpenes	15.68	15.68%
Sesquiterpenes	0.10	0.10%
Monoterpenols	9.4	9.43%
Sesquiterpenols	0.00	0.00%
Ketones	0.00	0.00%
Esters	0.01	0.01%
Ethers	74.33	74.33%
Aldehydes	0.32	0.32%
Phenols	0.00	0.00%
Other	0.13	0.13%

ESSENTIAL VALIDATION SERVICES | 747 SW 2ND AVE GAINESVILLE, FLORIDA 32601 | 317-361-5044

- Essential Oil testing is performed by using qualitative GC-MS. Method: SOP.T.01 Client Method
 - This report may not be published without the consent of Essential Validation Services.
 - Chromatograph image may be requested
 - This report is valid for 1 year from the analyzed date

Client



Source

*Eucalyptus Radiata (Eucalyptus radiata)*

AU-59300

Total Percentage		99.87%		
Number	RT	Area %	Compound Name	Chemical Family
1	7.69	0.02%	alpha-Thujene	Monoterpene
2	7.94	2.65%	alpha-Pinene	Monoterpene
3	8.54	0.02%	Camphene	Monoterpene
4	9.48	0.02%	Sabinene	Monoterpene
5	9.63	0.52%	beta-Pinene	Monoterpene
6	10.23	0.79%	Myrcene	Monoterpene
7	10.86	0.93%	alpha-Phellandrene	Monoterpene
8	11.33	0.36%	alpha-Terpinene	Monoterpene
9	11.66	1.25%	para-Cymene	Monoterpene
10	11.86	4.79%	Limonene	Monoterpene
11	12.17	74.33%	1,8-Cineole	Monoterpene Ether
12	12.27	0.11%	(Z)-beta-Ocimene	Monoterpene
13	12.71	0.04%	(E)-beta-Ocimene	Monoterpene
14	13.20	3.90%	gamma-Terpinene	Monoterpene
15	13.72	0.04%	cis-Linalool oxide (5) (furanoid)	Monoterpenol
16	14.38	0.21%	Terpinolene	Monoterpene
17	14.60	0.03%	para-Cymenene	Monoterpene
18	15.11	0.06%	Linalool	Monoterpenol
19	16.40	0.04%	Alloocimene	Monoterpene
20	16.83	0.06%	trans-Pinocarveol	Monoterpenol
21	16.96	0.01%	cis-para-Menth-2-en-1-ol	Monoterpenol
22	18.24	0.07%	delta-Terpineol	Monoterpenol
23	18.70	1.09%	Terpinen-4-ol	Monoterpenol
24	19.48	8.10%	alpha-Terpineol	Monoterpenol
25	21.37	0.13%	Neral	Monoterpene Aldehyde
26	22.72	0.19%	Geranial	Monoterpene Aldehyde
27	26.14	0.01%	alpha-Terpinyl acetate	Monoterpene Ester
28	27.11	0.01%	Isoledene	Sesquiterpene
29	28.62	0.01%	alpha-Gurjunene	Sesquiterpene
30	29.89	0.02%	Aromadendrene	Sesquiterpene
31	30.76	0.01%	allo-Aromadendrene	Sesquiterpene
32	32.07	0.02%	Viridiflorene	Sesquiterpene
33	32.23	0.01%	Bicyclogermacrene	Sesquiterpene
34	33.21	0.02%	delta-Cadinene	Sesquiterpene