

Client



Source



Douglas Fir (*Pseudotsuga menziesii*)
 NZ-59499 - New Zealand

Sample

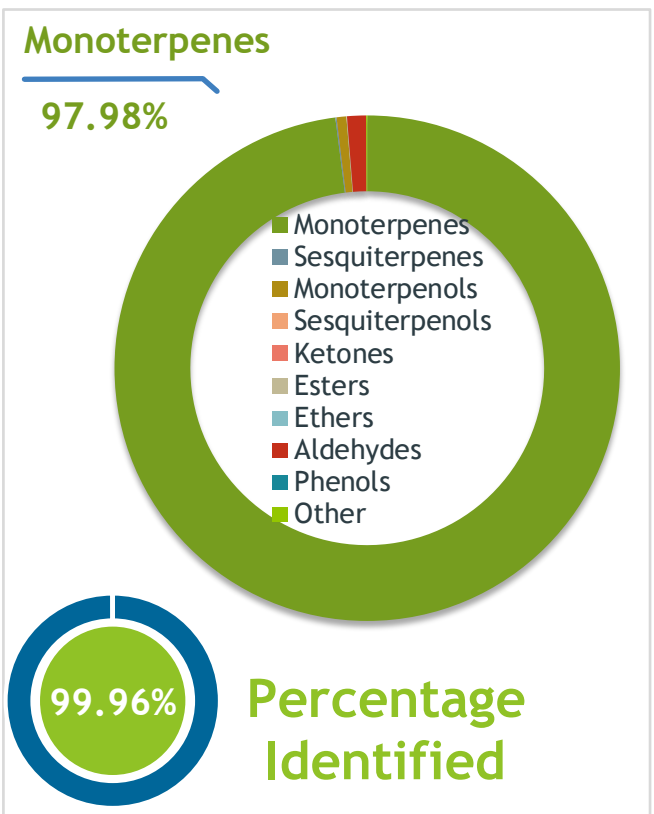
Douglas Fir (*Pseudotsuga menziesii*)
 Identification #: NZ-59499
 Type:..... Essential Oil
 CAS Number:... 8050-89-3
Nature's Gift

Properties


Country Of Origin | New Zealand
 Specific Gravity | NT
 Refractive Index | NT

Primary

92.91% | Limonene (Co-Eluting)
2.84% | Myrcene
0.86% | alpha-Pinene



Result


 9/8/2025

Conclusion

No adulterants, diluents, or contaminants were detected via this method. This oil meets the expected profile for genuine Essential Oil of Douglas Fir (*Pseudotsuga menziesii*)

Internal Number: | EVS-6989


Essential Validation Services
 240 Goose Hollow Road
 Berthoud, CO 80513
 317.361.5044 |
<https://essentialvalidationservices.com/>


Monoterpenes	97.98%	97.98
Sesquiterpenes	0.08%	0.08%
Monoterpenols	0.62%	0.62%
Sesquiterpenols	0.00%	0.00%
Ketones	0.00%	0.00%
Esters	0.04%	0.04%
Ethers	0.00%	0.00%
Aldehydes	1.21%	1.21%
Phenols	0.00%	0.00%
Other	0.07%	0.07%

ESSENTIAL VALIDATION SERVICES | 240 GOOSE HOLLOW ROAD BERTHOUD, CO 80513 | 317-361-5044

Client



Source

Douglas Fir (*Pseudotsuga menziesii*)

NZ-59499

Total Percentage		99.96%		
Number	RT	Area %	Compound Name	Chemical Family
1	4.19	0.01%	Hexanal	Aliphatic Aldehyde
2	5.37	0.06%	2-Methylbutyric acid	Aliphatic Acid
3	5.51	0.02%	(E)-2-Hexenal	Aliphatic Aldehyde
4	5.56	0.04%	cis-Hex-3-en-1-ol	Aliphatic Alcohol
5	5.98	0.01%	1-Hexanol	Aliphatic Alcohol
6	7.64	0.09%	Tricyclene	Monoterpene
7	7.81	1.32%	alpha-Thujene	Monoterpene
8	8.09	14.15%	alpha-Pinene	Monoterpene
9	8.66	0.76%	Camphene	Monoterpene
10	8.83	0.01%	Thuja-2,4(10)-diene	Monoterpene
11	9.64	11.77%	Sabinene	Monoterpene
12	9.82	19.06%	beta-Pinene	Monoterpene
13	10.34	2.33%	Myrcene	Monoterpene
14	10.77	0.04%	Ethyl hexanoate	Monoterpene Ester
15	10.99	0.28%	alpha-Phellandrene	Monoterpene
16	11.12	10.74%	delta-3-Carene	Monoterpene
17	11.36	0.05%	1,4-Cineole	Monoterpene Ether
18	11.45	2.74%	alpha-Terpinene	Monoterpene
19	11.78	1.21%	para-Cymene	Monoterpene
20	12.00	4.68%	Limonene	Monoterpene
21	12.35	0.12%	(Z)-beta-Ocimene	Monoterpene
22	12.81	0.41%	(E)-beta-Ocimene	Monoterpene
23	13.29	4.34%	gamma-Terpinene	Monoterpene
24	13.80	0.05%	trans-Sabinene hydrate	Monoterpenol
25	14.54	11.52%	Terpinolene	Monoterpene
26	14.71	0.25%	para-Cymenene	Monoterpene
27	15.22	0.28%	Linalool	Monoterpenol
28	15.72	0.03%	1,3,8-para-Menthatriene	Monoterpene
29	15.99	0.03%	Fenchol	Monoterpenol
30	16.24	0.13%	cis-para-Menth-2-en-1-ol	Monoterpenol
31	16.68	0.03%	para-Menthatriene	Monoterpene
32	16.78	0.02%	Terpinen-1-ol	Monoterpenol
33	16.94	0.07%	trans-Pinocarveol	Monoterpenol
34	17.09	0.17%	trans-para-Menth-2-en-1-ol	Monoterpenol
35	17.33	0.04%	Isopulegol	Monoterpenol

Client



Source



Douglas Fir (Pseudotsuga menziesii)
NZ-59499

Number	RT	Area %	Compound Name	Chemical Family
36	17.588	0.10%	Citronellal	Monoterpenol
37	18.02	0.02%	para-Mentha-1,5-dien-8-ol	Monoterpenol
38	18.39	0.06%	Borneol	Monoterpenol
39	18.84	5.41%	Terpinen-4-ol	Monoterpenol
40	19.15	0.18%	para-Cymen-8-ol	Monoterpenol
41	19.49	0.76%	alpha-Terpineol	Monoterpenol
42	19.67	0.08%	Ethyl octanoate	Monoterpene Ester
43	20.14	0.05%	cis-Piperitol	Monoterpenol
44	21.04	0.71%	Citronellol	Monoterpenol
45	22.09	0.07%	Neral	Monoterpene Aldehyde
46	23.46	0.42%	Bornyl acetate	Monoterpene Ester
47	25.68	0.05%	delta-Elemene	Sesquiterpene
48	26.22	0.06%	alpha-Longipinene	Sesquiterpene
49	26.44	2.53%	Citronellyl acetate	Monoterpene Ester
50	27.10	0.02%	alpha-Ylangene	Sesquiterpene
51	27.65	1.12%	Geranyl acetate	Monoterpene Ester
52	28.00	0.07%	beta-Elemene	Sesquiterpene
53	28.40	0.10%	Ethyl decanoate	Monoterpene Ester
54	28.50	0.08%	Sibirene	Sesquiterpene
55	28.69	0.13%	Longifolene	Sesquiterpene
56	29.15	0.09%	beta-Caryophyllene	Sesquiterpene
57	29.83	0.03%	trans-alpha-Bergamotene	Sesquiterpene
58	30.12	0.04%	6,9-Guaiadiene	Sesquiterpene
59	30.62	0.16%	alpha-Humulene	Sesquiterpene
60	31.68	0.20%	Germacrene D	Sesquiterpene
61	31.98	0.07%	gamma-Gurjunene	Sesquiterpene
62	32.30	0.04%	alpha-Selinene	Sesquiterpene
63	32.46	0.02%	alpha-Muurolene	Sesquiterpene
64	33.00	0.03%	gamma-Cadinene	Sesquiterpene
65	33.24	0.13%	delta-Cadinene	Sesquiterpene
66	34.18	0.03%	trans-alpha-Bisabolene	Sesquiterpene
67	37.19	0.04%	Ledol	Sesquiterpenol
68	47.57	0.04%	44.68 Totarene	0.00
69	54.44	0.05%	51.98 Abienol	0.00

