

Client



Source



Neroli (Citrus aurantium amara)

EG-59486 - Egypt

Sample

Neroli (Citrus aurantium amara)

Identification #: EG-59486

Type:..... Essential Oil

CAS Number:... 8016-38-4

Nature's Gift

Properties

Country Of Origin | Egypt

Specific Gravity | NT

Refractive Index | NT

Primary

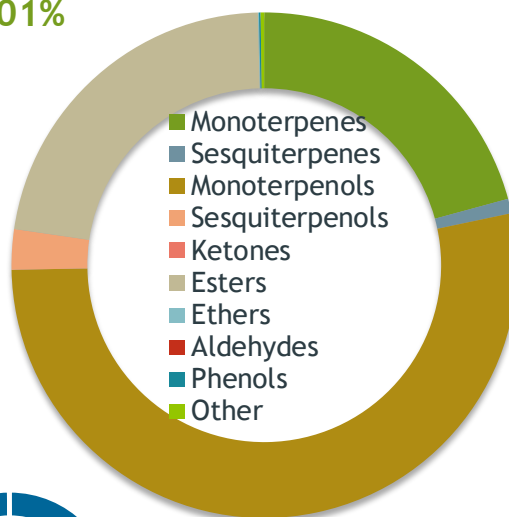
45.96% | Linalool

16.54% | Linalyl acetate

7.80% | Limonene

Monoterpenols

53.01%



Percentage Identified

Result



9/8/2025

Conclusion

No adulterants, diluents, or contaminants were detected via this method. This oil meets the expected profile for genuine Essential Oil of Neroli (Citrus aurantium amara)

Internal Number: | EVS-6977



Essential Validation Services

240 Goose Hollow Road
Berthoud, CO 80513
317.361.5044 |

<https://essentialvalidationservices.com/>

Alan Christen

Monoterpenes	20.77%	20.77
Sesquiterpenes	0.93%	0.93
Monoterpenols	53.01%	53.01
Sesquiterpenols	2.58%	2.58
Ketones	0.00%	0.00
Esters	22.31%	22.31
Ethers	0.07%	0.07
Aldehydes	0.00%	0.00
Phenols	0.10%	0.10
Other	0.23%	0.23

ESSENTIAL VALIDATION SERVICES | 240 GOOSE HOLLOW ROAD BERTHOUD, CO 80513 | 317-361-5044

Client



Source

Neroli (*Citrus aurantium amara*)

EG-59486

Total Percentage		99.88%		
Number	RT	Area %	Compound Name	Chemical Family
1	7.83	0.02%	alpha-Thujene	Monoterpene
2	8.08	0.37%	alpha-Pinene	Monoterpene
3	8.68	0.02%	Camphene	Monoterpene
4	9.62	0.55%	Sabinene	Monoterpene
5	9.79	5.33%	beta-Pinene	Monoterpene
6	10.36	1.49%	Myrcene	Monoterpene
7	11.00	0.02%	cis-Dehydroxylinalool oxide	Monoterpenol
8	11.47	0.04%	alpha-Terpinene	Monoterpene
9	11.81	0.06%	para-Cymene	Monoterpene
10	12.03	7.80%	Limonene	Monoterpene
11	12.38	0.57%	(Z)-beta-Ocimene	Monoterpene
12	12.85	4.00%	(E)-beta-Ocimene	Monoterpene
13	13.30	0.08%	gamma-Terpinene	Monoterpene
14	13.85	0.24%	trans-Linalool oxide (5) (furanoid)	Monoterpenol
15	14.51	0.34%	Terpinolene	Monoterpene
16	14.58	0.12%	cis-Linalool oxide (5) (furanoid)	Monoterpenol
17	15.05	0.01%	alpha-Pinene oxide	Monoterpene Ether
18	15.49	45.96%	Linalool	Monoterpenol
19	15.88	0.04%	Perillene	Monoterpene Ether
20	16.54	0.10%	Alloocimene	Monoterpene
21	16.91	0.10%	Phenylacetonitrile	Simple Phenolic
22	18.84	0.22%	Terpinen-4-ol	Monoterpenol
23	19.36	0.02%	(Z)-3-Hexenyl butyrate	Aliphatic Ester
24	19.58	5.39%	alpha-Terpineol	Monoterpenol
25	20.94	1.06%	Nerol	Monoterpenol
26	22.15	16.54%	Linalyl acetate	Monoterpene Ester
27	23.89	0.04%	Indole	Indole
28	25.57	0.05%	delta-Elemene	Sesquiterpene
29	25.92	0.04%	Methyl anthranilate	Phenolic Ester
30	26.24	0.09%	alpha-Terpinyl acetate	Monoterpene Ester
31	26.85	1.94%	Neryl acetate	Monoterpene Ester
32	27.70	3.68%	Geranyl acetate	Monoterpene Ester
33	28.03	0.03%	beta-Elemene	Sesquiterpene
34	29.19	0.62%	beta-Caryophyllene	Sesquiterpene
35	30.66	0.05%	alpha-Humulene	Sesquiterpene

ESSENTIAL VALIDATION SERVICES | 1240 GOOSE HOLLOW ROAD BERTHOUD, CO 80513 | 317-361-5044

