

Client



Source



Orange, Blood (Citrus sinensis)
FR-59442 - France

Sample

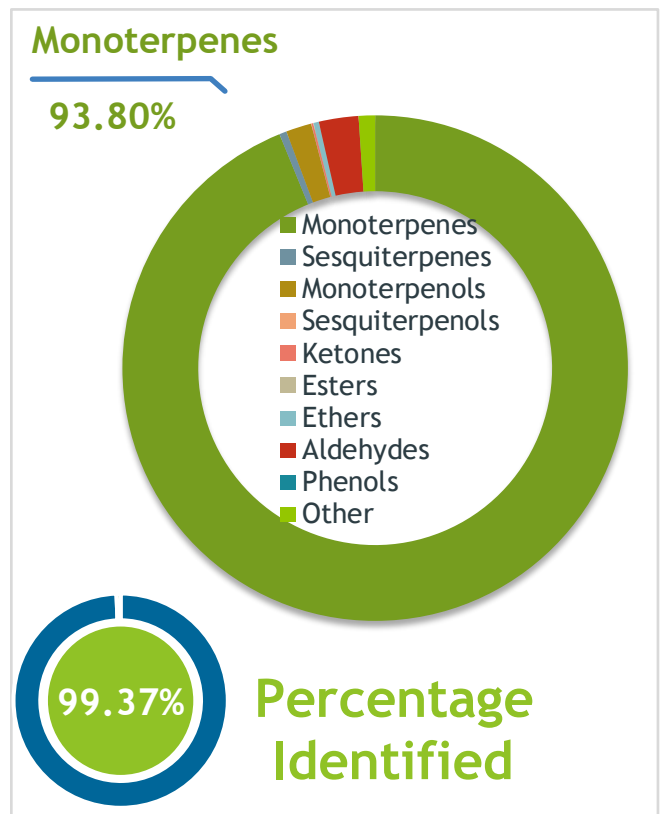
Orange, Blood (Citrus sinensis)
 Identification #: FR-59442
 Type:..... Essential Oil
 CAS Number:... 8008-57-9
Nature's Gift

Properties

Country Of Origin | France
 Specific Gravity | NT
 Refractive Index | NT

Primary

85.97% | Limonene
4.24% | Myrcene
1.32% | alpha-Pinene



Result



3/2/2025

Conclusion

No adulterants, diluents, or contaminants were detected via this method. This oil meets the expected profile for genuine Essential Oil of Orange, Blood (Citrus sinensis)

Internal Number: | EVS-6618



Essential Validation Services

240 Goose Hollow Road
 Berthoud, CO 80513
 317.361.5044 |
<https://essentialvalidationservices.com/>



Monoterpenes	93.80%	93.80
Sesquiterpenes	0.47%	0.47
Monoterpenols	1.63%	1.63
Sesquiterpenols	0.02%	0.02
Ketones	0.11%	0.11
Esters	0.03%	0.03
Ethers	0.34%	0.34
Aldehydes	2.53%	2.53
Phenols	0.00%	0.00
Other	1.05%	1.05

ESSENTIAL VALIDATION SERVICES | 240 GOOSE HOLLOW ROAD BERTHOUD, CO 80513 | 317-361-5044

Client



Source

Orange, Blood (*Citrus sinensis*)

FR-59442

Total Percentage		99.37%		
Number	RT	Area %	Compound Name	Chemical Family
1	4.22	0.01%	Hexanal	Aliphatic Aldehyde
2	7.08	0.01%	Heptanal	Aliphatic Aldehyde
3	7.91	0.01%	alpha-Thujene	Monoterpene
4	8.16	1.32%	alpha-Pinene	Monoterpene
5	9.71	1.32%	Sabinene	Monoterpene
6	9.88	0.16%	beta-Pinene	Monoterpene
7	10.47	4.24%	Myrcene	Monoterpene
8	11.05	0.73%	Octanal	Aliphatic Aldehyde
9	11.22	0.58%	delta-3-Carene	Monoterpene
10	11.94	0.02%	ortho-Cymene	Monoterpene
11	12.45	85.97%	Limonene	Monoterpene
12	12.55	0.02%	(Z)-beta-Ocimene	Monoterpene
13	12.98	0.06%	(E)-beta-Ocimene	Monoterpene
14	13.44	0.01%	gamma-Terpinene	Monoterpene
15	13.97	0.02%	trans-Sabinene hydrate	Monoterpenol
16	14.11	0.11%	1-Octanol	Aliphatic Alcohol
17	14.48	0.01%	Isoterpinolene	Monoterpene
18	14.65	0.08%	Terpinolene	Monoterpene
19	15.39	1.10%	Linalool	Monoterpenol
20	15.59	0.16%	Nonanal	Aliphatic Aldehyde
21	16.31	0.04%	trans-para-Mentha-2,8-dien-1-ol	Monoterpenol
22	16.78	0.17%	cis-Limonene oxide	Monoterpene Ether
23	16.99	0.15%	trans-Limonene oxide	Monoterpene Ether
24	17.75	0.12%	Citronellal	Monoterpene Aldehyde
25	18.73	0.01%	1-Nonanol	Fatty alcohol
26	18.99	0.01%	Terpinen-4-ol	Monoterpenol
27	19.22	0.01%	Cryptone	Monoterpene Ketone
28	19.34	0.01%	para-Cymen-8-ol	Monoterpenol
29	19.68	0.30%	alpha-Terpineol	Monoterpenol
30	20.24	0.92%	Decanal	Aliphatic Aldehyde
31	20.48	0.02%	Octyl acetate	Aliphatic Ester
32	20.79	0.07%	trans-Carveol	Monoterpenol
33	21.06	0.01%	Nerol	Monoterpenol
34	21.23	0.01%	Citronellol	Monoterpenol
35	21.39	0.05%	cis-Carveol	Monoterpenol

Client



Source



Orange, Blood (*Citrus sinensis*)
FR-59442

Number	RT	Area %	Compound Name	Chemical Family
36	21.633	0.11%	Neral	Monoterpenol
37	21.84	0.09%	Carvone	Monoterpene Ketone
38	22.98	0.22%	Geranial	Monoterpene Aldehyde
39	23.22	0.05%	Perilla aldehyde	Monoterpene Aldehyde
40	24.01	0.01%	Limonen-10-ol	Monoterpenol
41	24.59	0.02%	19.77 Tridecene<1->	0.00
42	26.97	0.01%	Neryl acetate	Monoterpene Ester
43	27.56	0.05%	alpha-Copaene	Sesquiterpene
44	28.10	0.04%	beta-Cubebene	Sesquiterpene
45	28.19	0.03%	beta-Elemene	Sesquiterpene
46	29.14	0.12%	Dodecanal	Aliphatic Aldehyde
47	29.35	0.04%	beta-Caryophyllene	Sesquiterpene
48	29.80	0.05%	beta-Copaene	Sesquiterpene
49	30.82	0.01%	alpha-Humulene	Sesquiterpene
50	30.89	0.02%	(E)-beta-Farnesene	Sesquiterpene
51	31.88	0.02%	Germacrene D	Sesquiterpene
52	32.36	0.13%	Eremophilene	Sesquiterpene
53	32.49	0.01%	alpha-Selinene	Sesquiterpene
54	32.66	0.01%	alpha-Muurolene	Sesquiterpene
55	32.99	0.01%	(E,E)-alpha-Farnesene	Sesquiterpene
56	33.44	0.05%	delta-Cadinene	Sesquiterpene
57	34.62	0.02%	Elemol	Sesquiterpenol
58	35.79	0.02%	Caryophyllene oxide	Sesquiterpene Ether
59	40.09	0.05%	beta-Sinensal	Sesquiterpene Aldehyde
60	42.08	0.02%	alpha-Sinensal	Sesquiterpene Aldehyde
61	43.76	0.01%	Nootkatone	Sesquiterpene Ketone
62	44.51	0.01%	Hexadecanal	Sesquiterpene Aldehyde
63	58.36	0.01%	Tricosane	Alkane
64	60.12	0.01%	Pentacosane	Alkane
65	61.23	0.28%	Heptacosane	Alkane

ESSENTIAL VALIDATION SERVICES | 1240 GOOSE HOLLOW ROAD BERTHOUD, CO 80513 | 317-361-5044

