

Client



Source



Spearmint (*Mentha spicata*)
US-59441 - USA

Sample

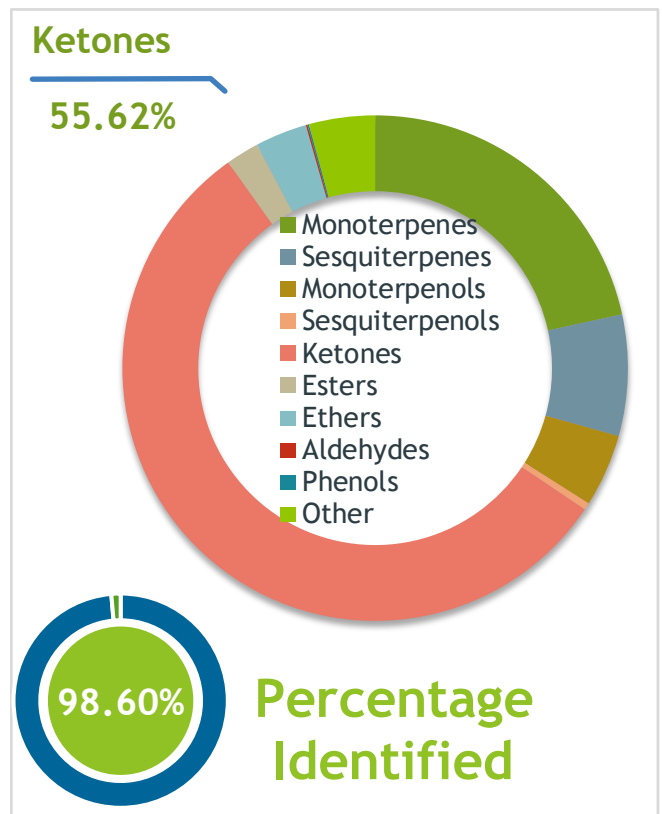
Spearmint (*Mentha spicata*)
 Identification #: US-59441
 Type:..... Essential Oil
 CAS Number:... 8008-79-5
Nature's Gift

Properties

Country Of Origin | USA
 Specific Gravity | NT
 Refractive Index | NT

Primary

52.56% | Carvone
12.70% | Limonene
3.40% | Myrcene



Result


 3/2/2025

Conclusion

0

Internal Number: | EVS-6617


Essential Validation Services
 240 Goose Hollow Road
 Berthoud, CO 80513
 317.361.5044 |
<https://essentialvalidationservices.com/>


Monoterpenes	21.56%	21.56
Sesquiterpenes	7.7	7.74%
Monoterpenols	4	4.65%
Sesquiterpenols		0.45%
Ketones	55.62%	55.62
Esters		2.13%
Ethers	3	3.31%
Aldehydes		0.10%
Phenols		0.10%
Other	4	4.22%

ESSENTIAL VALIDATION SERVICES | 240 GOOSE HOLLOW ROAD BERTHOUD, CO 80513 | 317-361-5044

Client



Source

Spearmint (*Mentha spicata*)

US-59441

Total Percentage		98.60%		
Number	RT	Area %	Compound Name	Chemical Family
1	3.72	0.03%	Ethyl 2-methylbutyrate	Aliphatic Ester
2	4.22	0.01%	Hexanal	Aliphatic Aldehyde
3	5.43	0.02%	2-Methylbutyric acid	Aliphatic Acid
4	5.55	0.05%	(E)-2-Hexenal	Aliphatic Aldehyde
5	5.62	0.05%	cis-Hex-3-en-1-ol	Aliphatic Alcohol
6	5.93	0.05%	(E)-2-Hexenol	Aliphatic Alcohol
7	6.04	0.03%	1-Hexanol	Aliphatic Alcohol
8	6.85	0.13%	2,5-Diethyltetrahydrofuran	Furan
9	7.67	0.21%	Hashishene	Monoterpene
10	7.91	0.10%	alpha-Thujene	Monoterpene
11	8.16	0.97%	alpha-Pinene	Monoterpene
12	8.77	0.03%	Camphene	Monoterpene
13	8.94	0.01%	Thuja-2,4(10)-diene	Monoterpene
14	9.30	0.01%	Benzaldehyde	Simple Phenolic
15	9.71	0.78%	Sabinene	Monoterpene
16	9.88	1.07%	beta-Pinene	Monoterpene
17	10.12	0.04%	1-Octen-3-ol	Aliphatic Alcohol
18	10.28	0.05%	Octan-3-one	Aliphatic Ketone
19	10.47	3.40%	Myrcene	Monoterpene
20	10.84	1.80%	3-Octanol	Aliphatic Alcohol
21	11.00	0.06%	Pseudolimonene	Monoterpene
22	11.58	0.45%	alpha-Terpinene	Monoterpene
23	11.93	0.20%	para-Cymene	Monoterpene
24	12.20	12.70%	Limonene	Monoterpene
25	12.26	1.79%	1,8-Cineole	Monoterpene Ether
26	12.49	0.31%	(Z)-beta-Ocimene	Monoterpene
27	12.95	0.17%	(E)-beta-Ocimene	Monoterpene
28	13.42	0.73%	gamma-Terpinene	Monoterpene
29	13.97	1.52%	trans-Sabinene hydrate	Monoterpenol
30	14.11	0.05%	1-Octanol	Aliphatic Alcohol
31	14.64	0.23%	Terpinolene	Monoterpene
32	14.87	0.04%	para-Cymenene	Monoterpene
33	14.93	0.01%	6,7-Epoxymyrcene	Monoterpene Ether
34	15.35	0.33%	cis-Sabinene hydrate	Monoterpenol
35	15.50	0.05%	2-Methylbutyl 2-methylbutyrate	Aliphatic Ester

Client



Source



Spearmint (*Mentha spicata*)
US-59441

Number	RT	Area %	Compound Name	Chemical Family
36	15.585	0.02%	Nonanal	Aliphatic Ester
37	15.67	0.01%	Isoamyl isovalerate	Aliphatic Ester
38	15.76	0.02%	1-Octenyl-3 acetate	Monoterpene Ester
39	16.31	0.71%	Octan-3-yl acetate	Aliphatic Ester
40	16.66	0.10%	Alloocimene	Monoterpene
41	16.78	0.02%	cis-Limonene oxide	Monoterpene Ether
42	16.99	0.10%	trans-Limonene oxide	Monoterpene Ether
43	17.12	0.07%	alpha-Pinocarveol	Monoterpenol
44	17.25	0.11%	cis-para-Menth-2-en-1-ol	Monoterpenol
45	17.40	0.04%	trans-Verbenol	Monoterpenol
46	17.83	0.02%	Isomenthone	Monoterpene Ketone
47	18.09	0.05%	Pinocarvone	Monoterpene Ketone
48	18.45	0.07%	para-Mentha-1,5-dien-8-ol	Monoterpenol
49	18.58	0.24%	Isoborneol	Monoterpenol
50	19.00	1.68%	Terpinen-4-ol	Monoterpenol
51	19.29	0.03%	15.09 Hexenyl butanoate<3Z->	0.00
52	19.51	0.03%	Methyl salicylate	Phenolic Ester
53	19.80	2.37%	cis-Dihydrocarvone	Monoterpene Ketone
54	20.02	1.32%	Dihydrocarveol	Monoterpene Ether
55	20.24	0.02%	Decanal	Aliphatic Aldehyde
56	20.49	0.03%	Octyl acetate	Aliphatic Ester
57	20.80	0.01%	trans-Carveol	Monoterpenol
58	21.15	0.58%	cis-Carveol	Monoterpenol
59	21.65	0.15%	cis-3-Hexenyl isovalerate	Aliphatic Ester
60	22.31	52.56%	Carvone	Monoterpene Ketone
61	22.46	0.27%	Piperitone	Monoterpene Ketone
62	22.68	0.01%	18.51 Chrysanthenyl acetate<cis->	0.00
63	22.80	0.08%	cis-Carvone oxide	
64	23.02	0.10%	Isopiperitenone	Monoterpene Ketone
65	23.35	0.18%	trans-Carvone oxide	Monoterpene Ketone
66	24.03	0.12%	Edulan II, dihydro-	Edulan
67	24.62	0.01%	20.48 Dihydro carveol acetate	0.00
68	24.72	0.01%	trans-Pinocarvyl acetate	Monoterpene Ether
69	25.48	0.39%	Dihydrocarvyl acetate	Monoterpene Ester
70	25.73	0.01%	delta-Elemene	Sesquiterpene

Client



Source



Spearmint (*Mentha spicata*)
US-59441

72	25.96	0.02%	Piperitenone	Sesquiterpene Ketone
73	26.31	0.05%	Myrtenyl acetate	Monoterpene Ester
74	26.65	0.09%	Eugenol	Phenylpropanoid
75	26.96	0.59%	cis-Caryyl acetate	Monoterpene Ester
76	27.58	0.09%	alpha-Copaene	Sesquiterpene
77	27.91	2.29%	beta-Bourbonene	Sesquiterpene
78	28.20	0.21%	beta-Elemene	Sesquiterpene
79	28.33	0.53%	cis-Jasmone	Jasmonate
80	28.84	0.05%	cis-Caryophyllene	Sesquiterpene
81	29.20	0.03%	Isocaryophyllene	Sesquiterpene
82	29.38	1.67%	beta-Caryophyllene	Sesquiterpene
83	29.50	0.01%	25.53 Menth-1-en-9-ol acetate<para->	0.00
84	29.82	0.41%	beta-Copaene	Sesquiterpene
85	30.01	0.01%	cis-alpha-Bergamotene	Sesquiterpene
86	30.67	0.05%	26.26 Ambrinol<cis-alpha->	0.00
87	30.83	0.08%	alpha-Humulene	Sesquiterpene
88	30.92	1.15%	(E)-beta-Farnesene	Sesquiterpene
89	31.10	0.05%	cis-Muurola-3,5-diene	Sesquiterpene
90	31.36	0.18%	Dauca-5,8-diene	Sesquiterpene
91	31.90	1.35%	Germacrene D	Sesquiterpene
92	32.15	0.04%	2-Phenylethyl 3-methylbutyrate	Monoterpene Ester
93	32.48	0.02%	Bicyclogermacrene	Sesquiterpene
94	32.59	0.02%	gamma-Muurolene	Sesquiterpene
95	32.66	0.01%	alpha-Muurolene	Sesquiterpene
96	32.79	0.01%	Valencene	Sesquiterpene
97	33.00	0.01%	(E,E)-alpha-Farnesene	Sesquiterpene
98	33.21	0.01%	gamma-Cadinene	Sesquiterpene
99	33.45	0.08%	delta-Cadinene	Sesquiterpene
100	35.80	0.06%	Caryophyllene oxide	Sesquiterpene Ether
101	36.32	0.44%	Viridiflorol	Sesquiterpenol
102	38.64	0.01%	alpha-Cadinol	Sesquiterpenol
103	39.69	0.01%	5.18 Germacra-4(15),5,10(14)-trien-1-alpha-	0.00