

Client	 Nature's Gift	Source	
--------	---	--------	--

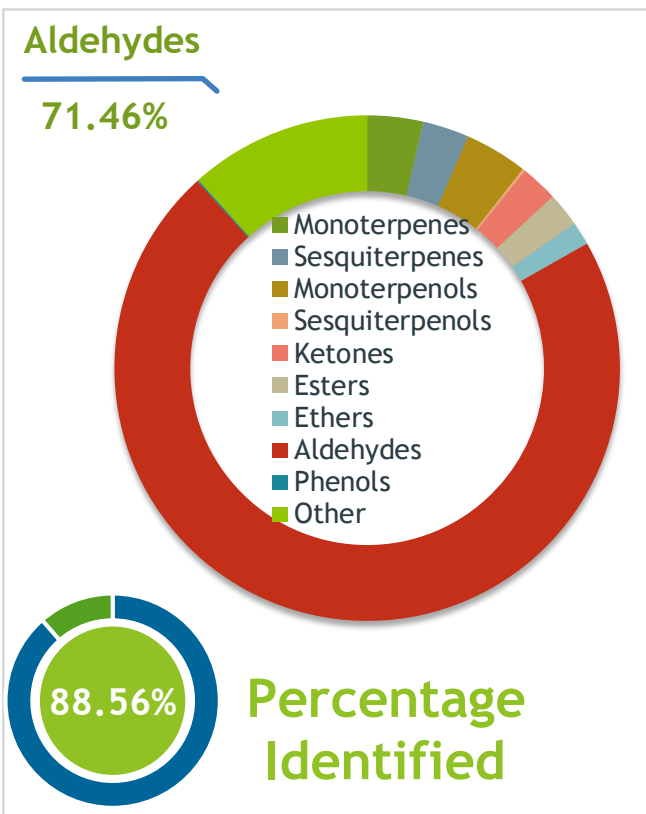
## Lemongrass (Cymbopogon flexuosus)

NP-59397 - Nepal

Sample	Lemongrass (Cymbopogon flexuosus)	
	Identification #:	NP-59397
	Type:.....	Essential Oil
	CAS Number:...	91844-92-7
Nature's Gift		

Properties	Country Of Origin	Nepal
	Specific Gravity	NT
	Refractive Index	NT

Primary	<b>40.44%</b>	<u>Geranial</u>
	<b>28.95%</b>	<u>Neral</u>
	<b>3.06%</b>	<u>Limonene</u>



Result	
	5/15/2024

Conclusion	<p>No adulterants, diluents, or contaminants were detected via this method. This oil meets the expected profile for genuine Essential Oil of Lemongrass (Cymbopogon flexuosus)</p>
	Internal Number:   EVS-6183



**Essential Validation Services**

747 SW 2nd Ave IMB 12 Suite 306  
Gainesville, FL 32601

317.361.5044 |  
<https://essentialvalidationservices.com/>



Monoterpenes		3.57%
Sesquiterpenes		2.98%
Monoterpenols		4.01%
Sesquiterpenols		0.18%
Ketones		2.39%
Esters		2.19%
Ethers		1.48%
Aldehydes		71.46%
Phenols		0.10%
Other		11.64%

ESSENTIAL VALIDATION SERVICES | 240 GOOSE HOLLOW ROAD BERTHOUD, CO 80513 | 317-361-5044

Client



Source

Lemongrass (*Cymbopogon flexuosus*)

NP-59397

Total Percentage		88.56%		
Number	RT	Area %	Compound Name	Chemical Family
1	7.80	0.02%	Tricyclene	Monoterpene
2	8.22	0.07%	alpha-Pinene	Monoterpene
3	8.83	0.16%	Camphene	Monoterpene
4	9.77	0.02%	Sabinene	Monoterpene
5	9.93	0.02%	beta-Pinene	Monoterpene
6	10.31	1.42%	6-Methyl-5-hepten-2-one	Aliphatic Ketone
7	10.50	0.07%	Myrcene	Monoterpene
8	11.10	0.07%	Octanal	Aliphatic Aldehyde
9	11.97	0.03%	para-Cymene	Monoterpene
10	12.17	3.06%	Limonene	Monoterpene
11	12.26	0.01%	1,8-Cineole	Monoterpene Ether
12	12.55	0.04%	(Z)-beta-Ocimene	Monoterpene
13	13.01	0.04%	(E)-beta-Ocimene	Monoterpene
14	13.27	0.03%	Bergamal	Aliphatic Aldehyde
15	13.48	0.02%	gamma-Terpinene	Monoterpene
16	14.02	0.01%	cis-Linalool oxide (5) (furanoid)	Monoterpenol
17	14.13	0.96%	4-Nonanone	Aliphatic Ketone
18	14.70	0.02%	Terpinolene	Monoterpene
19	15.34	0.08%	Perillene	Monoterpene Ether
20	15.43	0.73%	Linalool	Monoterpenol
21	15.54	0.09%	alpha-Pinene oxide	Monoterpene Ether
22	15.65	0.02%	Nonanal	Aliphatic Aldehyde
23	17.08	0.14%	trans-Limonene oxide	Monoterpene Ether
24	17.40	0.05%	exo-Isocitral	Monoterpene Aldehyde
25	17.57	0.22%	trans-Chrysanthemal	Monoterpene Aldehyde
26	17.81	0.46%	Citronellal	Monoterpene Aldehyde
27	18.25	0.33%	(Z)-isocitral	Monoterpene Aldehyde
28	18.62	0.17%	Rosefuran epoxide	Monoterpene Ether
29	18.95	0.12%	Menthol	Monoterpenol
30	19.11	0.68%	(E)-Isocitral	Monoterpene Aldehyde
31	19.68	0.20%	Isopinocampheol	Monoterpenol
32	20.31	0.15%	Decanal	Aliphatic Aldehyde
33	20.77	0.05%	trans-Carveol	Monoterpenol
34	21.16	0.06%	Nerol	Monoterpenol
35	21.36	0.30%	Citronellol	Monoterpenol

Client



Source



Lemongrass (*Cymbopogon flexuosus*)  
NP-59397

Number	RT	Area %	Compound Name	Chemical Family
36	21.842	28.95%	Neral	Monoterpenol
37	22.39	2.54%	Geraniol	Monoterpenol
38	23.24	40.44%	Geranial	Monoterpene Aldehyde
39	23.68	0.35%	Limonene Dioxide	
40	24.43	0.09%	Geranyl formate	Monoterpene Ester
41	25.43	0.02%	Methyl geranate	Monoterpene Ester
42	26.68	0.14%	Citronellyl acetate	Monoterpene Ester
43	26.81	0.20%	Neric acid	Monoterpene Acid
44	27.35	0.05%	alpha-Ylangene	Sesquiterpene
45	27.65	0.03%	alpha-Copaene	Sesquiterpene
46	27.91	1.93%	Geranyl acetate	Monoterpene Ester
47	28.27	0.11%	beta-Elemene	Sesquiterpene
48	29.21	0.06%	Dodecanal	Aliphatic Aldehyde
49	29.44	1.53%	beta-Caryophyllene	Sesquiterpene
50	30.09	0.02%	trans-alpha-Bergamotene	Sesquiterpene
51	30.56	0.02%	beta-Barbatene	Sesquiterpene
52	30.69	0.10%	(E)-Isoeugenol	Phenylpropanoid
53	30.90	0.18%	alpha-Humulene	Sesquiterpene
54	31.95	0.06%	Germacrene D	Sesquiterpene
55	32.25	0.01%	alpha-Selinene	Sesquiterpene
56	32.93	0.02%	alpha-Chamigrene	Sesquiterpene
57	33.04	0.05%	Cuparene	Sesquiterpene
58	33.28	0.73%	gamma-Cadinene	Sesquiterpene
59	33.52	0.07%	delta-Cadinene	Sesquiterpene
60	33.87	0.05%	trans-gamma-Bisabolene	Sesquiterpene
61	34.21	0.05%	alpha-Cadinene	Sesquiterpene
62	34.68	0.09%	Elemol	Sesquiterpenol
63	35.08	0.01%	Geranyl butyrate	Monoterpene Ester
64	35.87	0.91%	Caryophyllene oxide	Sesquiterpene Ether
65	36.05	0.01%	Palustrol	Sesquiterpenol
66	36.93	0.08%	Humulene epoxide II	Sesquiterpene Ether
67	37.26	0.08%	Longiborneol	Sesquiterpenol
68	45.42	0.01%	Phytone	Aliphatic Ketone

ESSENTIAL VALIDATION SERVICES | 1240 GOOSE HOLLOW ROAD BERTHOUD, CO 80513 | 317-361-5044

