

Client



Source



Lavender, Spike (*Lavandula latifolia*)  
ES-59319

Sample

Lavender, Spike (*Lavandula latifolia*)  
Batch #:..... ES-59319  
Type:..... Essential Oil  
CAS Number:... 8016-78-2  
**Nature's Gift**

Client



Website

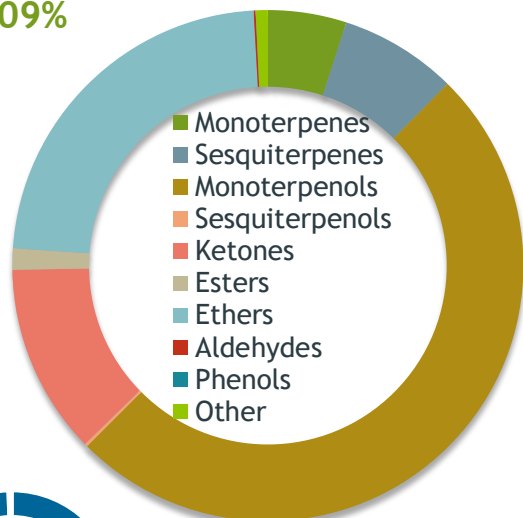


Primary

**45.56%** | Linalool  
**22.69%** | 1,8-Cineole  
**11.71%** | Camphor

Monoterpenols

50.09%



Percentage Identified

Result



Conclusion

No adulterants, diluents, or contaminants were detected via this method. This oil meets the expected profile for genuine Essential Oil of Lavender, Spike (*Lavandula latifolia*)

Internal Number: | EVS-5536



Essential Validation Services

747 SW 2nd Ave IMB 12 Suite 306  
Gainesville, FL 32601

317.361.5044 | <https://essentialvalidationservices.com/>

*Alan Christen*

Monoterpenes	4.97%
Sesquiterpenes	7.44%
Monoterpenols	50.09%
Sesquiterpenols	0.19%
Ketones	12.04%
Esters	1.35%
Ethers	23.02%
Aldehydes	0.12%
Phenols	0.01%
Other	0.76%

ESSENTIAL VALIDATION SERVICES | 747 SW 2ND AVE GAINESVILLE, FLORIDA 32601 | 317-361-5044

- Essential Oil testing is performed by using qualitative GC-MS. Method: SOP.T.01 Client Method  
- This report may not be published without the consent of Essential Validation Services.  
- Chromatograph image may be requested  
- This report is valid for 1 year from the analyzed date

Client



Source

Lavender, Spike (*Lavandula latifolia*)

ES-59319

Total Percentage		99.52%		
Number	RT	Area %	Compound Name	Chemical Family
1	3.68	0.01%	Toluene	Simple Phenolic
2	5.79	0.02%	cis-Hex-3-en-1-ol	Aliphatic Alcohol
3	6.21	0.10%	1-Hexanol	Aliphatic Alcohol
4	7.95	0.03%	Tricyclene	Monoterpene
5	8.11	0.02%	alpha-Thujene	Monoterpene
6	8.37	1.19%	alpha-Pinene	Monoterpene
7	8.98	0.41%	Camphene	Monoterpene
8	9.15	0.03%	Thuja-2,4(10)-diene	Monoterpene
9	9.93	0.44%	Sabinene	Monoterpene
10	10.10	1.53%	beta-Pinene	Monoterpene
11	10.32	0.11%	1-Octen-3-ol	Aliphatic Alcohol
12	10.51	0.11%	Octan-3-one	Aliphatic Ketone
13	10.67	0.40%	Myrcene	Monoterpene
14	11.32	0.03%	Pseudolimonene	Monoterpene
15	11.80	0.07%	alpha-Terpinene	Monoterpene
16	12.15	0.21%	para-Cymene	Monoterpene
17	12.49	22.69%	1,8-Cineole	Monoterpene Ether
18	12.72	0.20%	(Z)-beta-Ocimene	Monoterpene
19	13.18	0.04%	(E)-beta-Ocimene	Monoterpene
20	13.66	0.13%	gamma-Terpinene	Monoterpene
21	14.19	0.35%	trans-Sabinene hydrate	Monoterpenol
22	14.38	0.05%	1-Octanol	Aliphatic Alcohol
23	14.73	0.01%	10.70 Camphenilone	0.00
24	14.88	0.18%	Terpinolene	Monoterpene
25	14.94	0.13%	trans-Linalool oxide (5) (furanoid)	Monoterpenol
26	15.10	0.02%	para-Cymenene	Monoterpene
27	15.79	45.56%	Linalool	Monoterpenol
28	15.85	0.01%	Hotrienol	Monoterpenol
29	16.69	0.03%	cis-para-Menth-2-en-1-ol	Monoterpenol
30	16.77	0.03%	alpha-Campholene aldehyde	Monoterpene Aldehyde
31	16.91	0.04%	Alloocimene	Monoterpene
32	17.25	0.08%	Nopinone	Monoterpene Ketone
33	17.40	0.12%	trans-Pinocarveol	Monoterpenol
34	17.66	11.71%	Camphor	Monoterpene Ketone
35	17.83	0.19%	Hexyl isobutyrate	Monoterpene Ester

Client



Source



Lavender, Spike (*Lavandula latifolia*)  
ES-59319

Number	RT	Area %	Compound Name	Chemical Family
36	18.007	0.03%	Camphene hydrate	Monoterpene Ester
37	18.14	0.01%	Sabina ketone	Monoterpene Ketone
38	18.54	0.01%	Lavandulol	Monoterpene
39	18.81	1.73%	Borneol	Monoterpene
40	19.02	0.03%	cis-Linalool oxide (6) (pyranoid)	Monoterpene
41	19.22	0.39%	Terpinen-4-ol	Monoterpene
42	19.46	0.09%	Cryptone	Monoterpene Ketone
43	19.56	0.10%	para-Cymen-8-ol	Monoterpene
44	19.69	0.04%	(Z)-3-Hexenyl butyrate	Aliphatic Ester
45	19.92	1.51%	alpha-Terpineol	Monoterpene
46	20.40	0.04%	Verbenone	Monoterpene Ketone
47	20.50	0.01%	Decanal	Aliphatic Aldehyde
48	21.02	0.03%	trans-Carveol	Monoterpene
49	21.36	0.06%	Bornyl formate	Monoterpene Ester
50	21.85	0.35%	Hexyl 2-methyl butanoate	Monoterpene Ester
51	22.00	0.04%	Cuminal	Monoterpene Aldehyde
52	22.13	0.25%	Hexyl isovalerate	Monoterpene Ester
53	22.52	0.05%	Geraniol	Monoterpene
54	23.55	0.04%	Phellandral	Monoterpene Aldehyde
55	23.91	0.03%	Bornyl acetate	Monoterpene Ester
56	24.00	0.02%	Lavandulyl acetate	Monoterpene Ester
57	24.27	0.01%	Cumin alcohol	Monoterpene
58	25.99	0.10%	Hexyl tiglate	Monoterpene Ester
59	27.97	0.07%	Daucene	Sesquiterpene
60	28.15	0.18%	beta-Bourbonene	Sesquiterpene
61	29.06	0.14%	7-epi-Sesquithujene	Sesquiterpene
62	29.14	0.04%	alpha-Gurjunene	Sesquiterpene
63	29.47	0.02%	cis-alpha-Bergamotene	Sesquiterpene
64	29.63	1.79%	beta-Caryophyllene	Sesquiterpene
65	30.07	0.04%	beta-Copaene	Sesquiterpene
66	30.28	0.21%	trans-alpha-Bergamotene	Sesquiterpene
67	30.59	0.05%	(Z)-beta-Farnesene	Sesquiterpene
68	31.17	0.54%	(E)-beta-Farnesene	Sesquiterpene
69	31.41	0.07%	Lavandulyl isobutyrate	Monoterpene Ester
70	31.79	0.05%	Dauca-5,8-diene	Sesquiterpene
71	31.95	0.02%	gamma-Murolene	Sesquiterpene

ESSENTIAL VALIDATION SERVICES | 74 SW 27th AVE GAINESVILLE, FLORIDA 32601 | 352-301-5044

Client



Source



Lavender, Spike (*Lavandula latifolia*)  
 ES-59319

72	32.15	0.64%	Germacrene D	Sesquiterpene
73	32.33	0.06%	Zingiberene	Sesquiterpene
74	32.73	0.01%	Bicyclogermacrene	Sesquiterpene
75	33.06	0.02%	cis-alpha-Bisabolene	Sesquiterpene
76	33.18	0.21%	Lavandulyl 2-methylbutyrate	Monoterpene Ester
77	33.25	0.12%	(E,E)-alpha-Farnesene	Sesquiterpene
78	33.34	0.30%	beta-Bisabolene	Sesquiterpene
79	33.47	0.25%	gamma-Cadinene	Sesquiterpene
80	33.71	0.06%	delta-Cadinene	Sesquiterpene
81	34.64	2.83%	trans-alpha-Bisabolene	Sesquiterpene
82	34.88	0.03%	cis-Sesquisabinene hydrate	Monoterpene Ester
83	36.06	0.33%	Caryophyllene oxide	Sesquiterpene Ether
84	38.40	0.15%	T-Cadinol	Sesquiterpenol
85	40.05	0.04%	alpha-Bisabolol	Sesquiterpenol

ESSENTIAL VALIDATION SERVICES | 14 / SW 2<sup>nd</sup> AVE GAINESVILLE, FLORIDA 32601 | 311-361-5044

- Essential Oil testing is performed by using qualitative GC-MS. Method: SOP.T.01 Client Method  
 - This report may not be published without the consent of Essential Validation Services.  
 - Chromatograph image may be requested  
 - This report is valid for 1 year from the analyzed date