

Client



Source



Jasmine Grandiflora (*Jasminum grandiflorum*)  
IN-59280

Sample

Jasmine Grandiflora (*Jasminum*)  
Batch #:..... | IN-59280  
Type:..... | Essential Oil  
CAS Number:... | 8022-96-6  
**Nature's Gift**

Client



Website

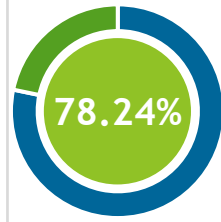
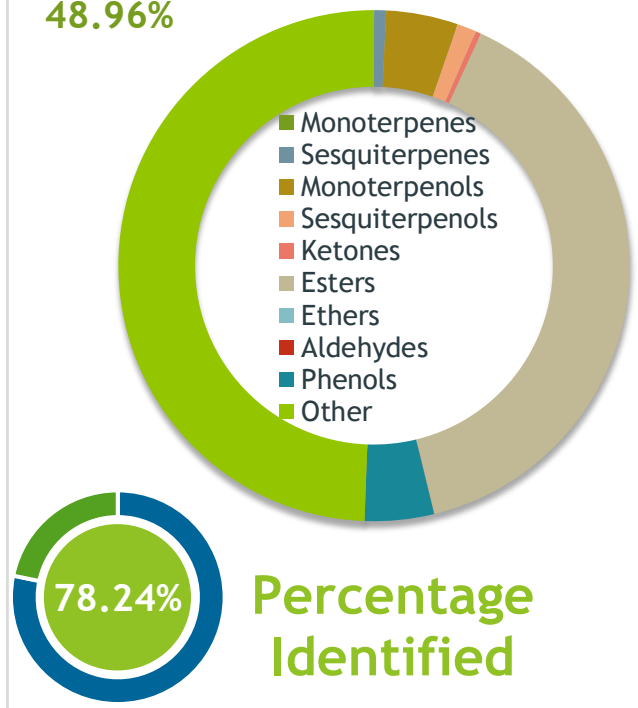


Primary

**13.16%** | Benzyl acetate  
**11.67%** | Benzyl benzoate  
**9.69%** | Phytol

Other

48.96%



Percentage Identified

Result



Conclusion

No adulterants, diluents, or contaminants were detected via this method. This oil meets the expected profile for genuine Essential Oil of Jasmine Grandiflora (*Jasminum grandiflorum*)

Internal Number: | EVS-5258



**Essential Validation Services**

747 SW 2nd Ave IMB 12 Suite 306  
Gainesville, FL 32601

317.361.5044 | <https://essentialvalidationservices.com/>

*Alan Christen*

Monoterpenes	0.01%
Sesquiterpenes	0.75%
Monoterpenols	4.51%
Sesquiterpenols	1.21%
Ketones	0.34%
Esters	38.96%
Ethers	0.00%
Aldehydes	0.01%
Phenols	4.33%
Other	48.96%

ESSENTIAL VALIDATION SERVICES | 747 SW 2<sup>ND</sup> AVE GAINESVILLE, FLORIDA 32601 | 317-361-5044

Client



Source

*Jasmine Grandiflora (Jasminum grandiflorum)*

IN-59280

Total Percentage		78.24%		
Number	RT	Area %	Compound Name	Chemical Family
1	10.09	0.01%	6-Methyl-5-hepten-2-one	Aliphatic Ketone
2	11.91	0.01%	Limonene	Monoterpene
3	12.24	1.02%	Benzyl alcohol	Simple Phenolic
4	13.79	0.01%	cis-Linalool oxide (5) (furanoid)	Monoterpenol
5	14.24	0.20%	para-Cresol	Phenol
6	14.52	0.01%	trans-Linalool oxide (5) (furanoid)	Monoterpenol
7	14.83	0.10%	Methyl benzoate	Phenolic Ester
8	15.29	4.48%	Linalool	Monoterpenol
9	15.47	0.03%	Maltol	Monoterpene Ketone
10	15.68	0.02%	2-Phenylethanol	Simple Phenolic
11	18.23	13.16%	Benzyl acetate	Phenolic Ester
12	19.50	0.01%	alpha-Terpineol	Monoterpenol
13	19.63	0.15%	Methyl chavicol	Phenylpropanoid
14	22.15	0.11%	2-Phenylethyl acetate	Phenolic Ester
15	23.89	1.62%	Indole	Indole
16	25.92	0.96%	Methyl anthranilate	Phenolic Ester
17	26.18	0.09%	Benzyl butanoate	Monoterpene Ester
18	26.53	1.95%	Eugenol	Phenylpropanoid
19	27.70	0.01%	Geranyl acetate	Monoterpene Ester
20	27.87	0.41%	cis-Jasmone	Jasmonate
21	28.27	3.43%	trans-Jasmone	Jasmonate
22	28.65	0.09%	(Z)-Isoeugenol	Phenylpropanoid
23	30.49	0.90%	(E)-Isoeugenol	Phenylpropanoid
24	30.77	0.02%	(E)-beta-Farnesene	Sesquiterpene
25	31.51	0.01%	allo-Aromadendrene	Sesquiterpene
26	32.09	0.62%	28.45 Jasmolactone<E->	0.00
27	32.32	0.05%	(Z,E)-alpha-Farnesene	Sesquiterpene
28	32.51	0.03%	Benzyl tiglate	Monoterpene Ester
29	32.66	0.04%	cis-alpha-Bisabolene	Sesquiterpene
30	32.87	0.40%	(E,E)-alpha-Farnesene	Sesquiterpene
31	32.93	0.06%	beta-Bisabolene	Sesquiterpene
32	33.03	0.03%	Bicyclogermacrene	Sesquiterpene
33	33.67	0.10%	29.82 Methyl dodecanoate	0.00
34	33.86	0.03%	(Z)-Nerolidol	Sesquiterpenol
35	34.23	0.14%	trans-alpha-Bisabolene	Sesquiterpene

ESSENTIAL VALIDATION SERVICES | 747 SW 2<sup>ND</sup> AVE GAINESVILLE, FLORIDA 32601 | 317-361-5044

- Essential Oil testing is performed by using qualitative GC-MS. Method: SOP.T.01 Client Method  
 - This report may not be published without the consent of Essential Validation Services.  
 - Chromatograph image may be requested  
 - This report is valid for 1 year from the analyzed date

Client



Source



*Jasmine Grandiflora (Jasminum grandiflorum)*  
IN-59280

Number	RT	Area %	Compound Name	Chemical Family
36	35.067	0.11%	(E)-Nerolidol	Sesquiterpene
37	35.40	1.30%	(Z)-3-Hexenyl benzoate	Monoterpene Ester
38	36.18	0.06%	Methyl N-acetylanthranilate	Monoterpene Ester
39	38.12	1.13%	(Z)-Methyl jasmonate	Monoterpene Ester
40	39.23	0.09%	35.91 Methyl epi-jasmonate<Z->	0.00
41	39.66	0.05%	alpha-Bisabolol	Sesquiterpenol
42	40.32	0.02%	(Z,Z)-Farnesol	Sesquiterpenol
43	40.82	0.01%	(Z,E)-Farnesol	Sesquiterpenol
44	41.21	0.09%	37.57 Methyl tetradecanoate	0.00
45	41.33	0.01%	Pentadecanal	Sesquiterpene Aldehyde
46	42.72	11.67%	Benzyl benzoate	Phenolic Ester
47	45.23	0.29%	Phytone	Aliphatic Ketone
48	45.49	0.05%	Nonadecene	Alkene
49	45.92	0.25%	Benzyl salicylate	Phenolic Ester
50	47.26	0.01%	Nonadecane	Alkane
51	47.43	0.01%	Farnesylacetone	Sesquiterpene Ketone
52	48.05	1.24%	Methyl palmitate	Fatty Acid Ester
53	48.80	8.63%	Isophytol	Diterpenol
54	49.11	0.02%	45.98 Geranyl linalool<Z,Z->	0.00
55	50.23	0.04%	Ethyl hexadecanoate	Fatty Acid Ester
56	51.05	0.99%	48.16 Geranyl linalool<E,E->	Sesquiterpenol
57	52.86	0.10%	1-Octadecanol	Diterpenol
58	53.20	1.10%	Methyl linoleate	Fatty Acid Ester
59	53.36	0.73%	UK Jasmine	
60	53.48	2.85%	Methyl oleate	Fatty Acid Ester
61	53.86	9.69%	Phytol	Diterpenol
62	54.30	0.31%	Methyl octadecanoate	Diterpene Ester
63	54.89	0.03%	Oleic Acid	Fatty Acid
64	55.17	0.04%	Ethyl linoleate	Fatty Acid Ester
65	56.09	0.03%	Linoleic acid	Fatty Acid
66	56.86	4.51%	Phytyl acetate	Diterpene Ester
67	60.75	0.52%	UK Jasmine	
68	61.03	0.80%	UK Jasmine	
69	61.19	0.54%	UK Jasmine	
70	61.36	0.56%	UK Jasmine	
71	61.56	0.50%	UK Jasmine	

ESSENTIAL VALIDATION SERVICES | 74 SW 2<sup>ND</sup> AVE GAINESVILLE, FLORIDA 32601 | 352-301-3044

