

Client



Source



Ravintsara (*Cinnamomum camphora*)  
MG-59251

Sample

Ravintsara (*Cinnamomum camphora*)  
Batch #:..... MG-59251  
Type:..... Essential Oil  
CAS Number:... 8008-51-3  
Nature's Gift

Client



Website

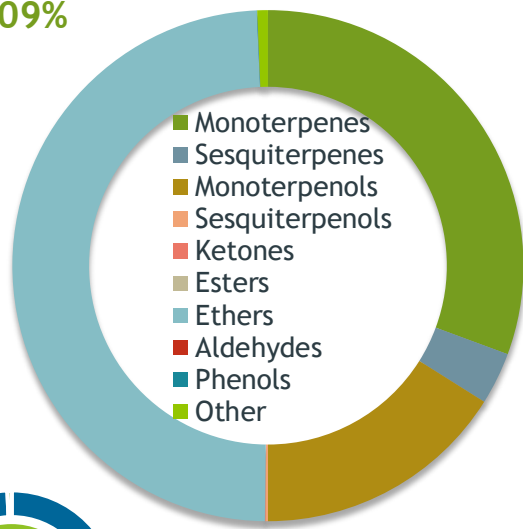


Primary

**49.05%** | **1,8-Cineole**  
**14.45%** | **Sabinene**  
**10.36%** | **alpha-Terpineol**

Ethers

49.09%



Percentage Identified

Result



Conclusion

No adulterants, diluents, or contaminants were detected via this method. This oil meets the expected profile for genuine Essential Oil of Ravintsara (*Cinnamomum camphora*)

Internal Number: | EVS-4960



Essential Validation Services

747 SW 2nd Ave IMB 12 Suite 306  
Gainesville, FL 32601

317.361.5044 | <https://essentialvalidationservices.com/>

*Alan Christen*

Monoterpenes	30.62%	30.62%
Sesquiterpenes	3.31%	3.31%
Monoterpenols	16.05%	16.05%
Sesquiterpenols	0.16%	0.16%
Ketones	0.03%	0.03%
Esters	0.01%	0.01%
Ethers	49.09%	49.09%
Aldehydes	0.00%	0.00%
Phenols	0.03%	0.03%
Other	0.67%	0.67%

ESSENTIAL VALIDATION SERVICES | 747 SW 2<sup>ND</sup> AVE GAINESVILLE, FLORIDA 32601 | 317-361-5044

- Essential Oil testing is performed by using qualitative GC-MS. Method: SOP.T.01 Client Method  
- This report may not be published without the consent of Essential Validation Services.  
- Chromatograph image may be requested  
- This report is valid for 1 year from the analyzed date

Client



Source

Ravintsara (*Cinnamomum camphora*)

MG-59251

Total Percentage		99.34%		
Number	RT	Area %	Compound Name	Chemical Family
1	3.63	0.01%	Prenol	Aliphatic Ester
2	7.57	0.01%	Tricyclene	Monoterpene
3	7.73	0.99%	alpha-Thujene	Monoterpene
4	7.98	5.46%	alpha-Pinene	Monoterpene
5	8.58	0.23%	Camphene	Monoterpene
6	9.56	14.45%	Sabinene	Monoterpene
7	9.69	4.03%	beta-Pinene	Monoterpene
8	10.08	0.01%	6-Methyl-5-hepten-2-one	Aliphatic Ketone
9	10.27	1.80%	Myrcene	Monoterpene
10	10.90	0.09%	alpha-Phellandrene	Monoterpene
11	11.37	0.71%	alpha-Terpinene	Monoterpene
12	11.71	0.95%	para-Cymene	Monoterpene
13	12.14	49.05%	1,8-Cineole	Monoterpene Ether
14	12.30	0.07%	(Z)-beta-Ocimene	Monoterpene
15	12.75	0.32%	(E)-beta-Ocimene	Monoterpene
16	13.21	1.15%	gamma-Terpinene	Monoterpene
17	13.72	0.50%	trans-Sabinene hydrate	Monoterpenol
18	14.42	0.34%	Terpinolene	Monoterpene
19	14.63	0.01%	para-Cymenene	Monoterpene
20	15.10	0.32%	cis-Sabinene hydrate	Monoterpenol
21	16.17	0.16%	cis-para-Menth-2-en-1-ol	Monoterpenol
22	16.44	0.01%	Alloocimene	Monoterpene
23	16.88	0.01%	trans-Pinocarveol	Monoterpenol
24	17.01	0.10%	trans-para-Menth-2-en-1-ol	Monoterpenol
25	17.14	0.01%	Camphor	Monoterpene Ketone
26	18.29	1.08%	delta-Terpineol	Monoterpenol
27	18.76	3.21%	Terpinen-4-ol	Monoterpenol
28	18.98	0.01%	Cryptone	Monoterpene Ketone
29	19.09	0.02%	para-Cymen-8-ol	Monoterpenol
30	19.52	10.36%	alpha-Terpineol	Monoterpenol
31	20.09	0.05%	trans-Piperitol	Monoterpenol
32	20.84	0.13%	Nerol	Monoterpenol
33	21.00	0.01%	Citronellol	Monoterpenol
34	23.64	0.03%	Safrole	Phenylpropanoid
35	25.53	0.10%	Ascaridole	Monoterpenol



