

Client



Source

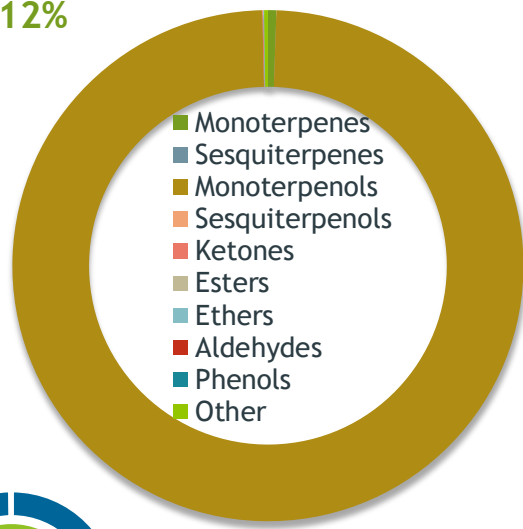
Ho Wood (*Cinnamomum camphora* Sieb. var. *linaloolifera* Fujita)
CN-59250

Sample

Ho Wood (*Cinnamomum camphora* Sieb. var. ...)
Batch #:..... CN-59250
Type:..... Essential Oil
CAS Number:.....
Nature's Gift

Monoterpenols

99.12%



Client



Website



Primary

98.19% Linalool
0.60% trans-Linalool oxide (5)
0.30% cis-Linalool oxide (5)



Percentage Identified

Result



Conclusion

No adulterants, diluents, or contaminants were detected via this method. This oil meets the expected profile for genuine Essential Oil of Ho Wood (*Cinnamomum camphora* Sieb. var. *linaloolifera* Fujita)

Internal Number: | EVS-4959



Essential Validation Services

747 SW 2nd Ave IMB 12 Suite 306
Gainesville, FL 32601

317.361.5044 | <https://essentialvalidationservices.com/>

Alan Christen

Monoterpenes	0.53%
Sesquiterpenes	0.00%
Monoterpenols	99.12%
Sesquiterpenols	0.00%
Ketones	0.06%
Esters	0.00%
Ethers	0.05%
Aldehydes	0.00%
Phenols	0.00%
Other	0.24%

ESSENTIAL VALIDATION SERVICES | 747 SW 2ND AVE GAINESVILLE, FLORIDA 32601 | 317-361-5044

- Essential Oil testing is performed by using qualitative GC-MS. Method: SOP.T.01 Client Method
- This report may not be published without the consent of Essential Validation Services.
- Chromatograph image may be requested
- This report is valid for 1 year from the analyzed date

Client



Source

Ho Wood (*Cinnamomum camphora* Sieb. var. *linaloolifera* Fujita)
CN-59250

ESSENTIAL VALIDATION SERVICES | 747 SW 2ND AVE GAINESVILLE, FLORIDA 32601 | 317-361-5044

Total Percentage		99.76%		
Number	RT	Area %	Compound Name	Chemical Family
1	3.88	0.01%	2-Hexanone	Aliphatic Ketone
2	9.52	0.01%	Sabinene	Monoterpene
3	10.26	0.13%	Myrcene	Monoterpene
4	10.89	0.02%	alpha-Phellandrene	Monoterpene
5	11.36	0.02%	alpha-Terpinene	Monoterpene
6	11.69	0.03%	para-Cymene	Monoterpene
7	11.90	0.15%	Limonene	Monoterpene
8	12.00	0.05%	1,8-Cineole	Monoterpene Ether
9	12.28	0.05%	(Z)-beta-Ocimene	Monoterpene
10	12.73	0.09%	(E)-beta-Ocimene	Monoterpene
11	13.20	0.02%	gamma-Terpinene	Monoterpene
12	13.75	0.30%	cis-Linalool oxide (5) (furanoid)	Monoterpenol
13	14.49	0.60%	trans-Linalool oxide (5) (furanoid)	Monoterpenol
14	15.40	98.19%	Linalool	Monoterpenol
15	16.37	0.01%	Fenchol	Monoterpenol
16	16.45	0.01%	Alloocimene	Monoterpene
17	17.14	0.04%	Camphor	Monoterpene Ketone
18	19.51	0.02%	cis-Linalool oxide (6) (pyranoid)	Monoterpenol
19	21.60	0.01%	Carvone	Monoterpene Ketone

Client



Nature's Gift

Source

Ho Wood (*Cinnamomum camphora* Sieb. var.
linaloolifera Fujita)
CN-59250

Number	RT	Area %	Compound Name	Chemical Family

- Essential Oil testing is performed by using qualitative GC-MS. Method: SOP.T.01 Client Method
- This report may not be published without the consent of Essential Validation Services.
- Chromatograph image may be requested
- This report is valid for 1 year from the analyzed date



Ho Wood (*Cinnamomum camphora* Sieb. var. *linaloolifera* Fujita)
CN-59250

ESSENTIAL VALIDATION SERVICES | 74 SW 2ND AVE GAINESVILLE, FLORIDA 32601 | 351-361-5044

- Essential Oil testing is performed by using qualitative GC-MS. Method: SOP.T.01 Client Method
- This report may not be published without the consent of Essential Validation Services.
- Chromatograph image may be requested
- This report is valid for 1 year from the analyzed date