

Cypress

Cupressus sempervirens

Batch No. FR-59299

France

Monoterpenes 69.02%

α pinene	36.01
δ-3 carene	15.73
limonene	3.40
myrcene	2.71
terpinolene	2.50
sabinene	2.48
γ terpinene	1.14
ortho-cymene	1.02
β pinene	0.99
α-thujene	0.85
α-fenchene	0.69
α terpinene	0.61
tricyclene	0.18
camphene	0.17
iso terpinolene	0.13
para cymenene	0.12
(Z) β ocimene	0.08
para cymene	0.06
thuja-2, 4(10)-diene	0.05
(E) β ocimene	0.04
bornylene	0.04
alloocimene	0.01
α phellandrene	0.01

Aldehydes 0.05%

β cyclocitral	0.04
α-campholenal	0.01

Esters 8.13%

α-terpenyl acetate	6.11
terpinen-4-yl acetate	1.16
δ terpinyl acetate	0.47
bornyl acetate	0.20
linalyl acetate	0.15
(E) linalool oxide acetate	0.02
(Z) verbenyl acetate	0.02

Monoterpenols 7.06%

terpinen-4-ol	3.37
linalol	1.92
α terpineol	1.05
para-cymen-8-ol	0.20
cis-linalool oxide (5)(furanoid)	0.10
para-Menth-1,5-dien-8-ol	0.10
trans-pinocarveol	0.09
trans-carveol	0.07
cis-para-menth-2-en-1-ol	0.04
thymol	0.04
fenchol	0.03
hotrienol	0.02
(E) para-menth-2,8-dien-1-ol	0.02
terpinen-1-ol	0.01

Ethers 0.14%

caryophyllene oxide	0.06
α pinene oxide	0.05
cis-limonene oxide	0.02
manool oxide	0.01

Ketones 1.87%

karahanaenone	1.44
camphor	0.26
umbellulone	0.09
verbenone	0.05
carvone	0.02
pinocamphone	0.01

Phenols 0.39%

methyl carvacrol	0.39
------------------	------

Other 0.12%

totarol	0.01
1-octanol	0.01
nor-davanone	0.07
abietadiene	0.01
abietatriene	0.02

Sesquiterpenes 7.58%

germacrene d	1.65
β cedrene	1.54
δ cadinene	0.79
β caryophyllene	0.44
α alaskene	0.40
α humulene	0.35
γ muurolene	0.34
cis-muurola-4(14),5-diene	0.31
α muurolene	0.27
α copaene	0.21
epizonarene	0.15
γ cadinene	0.13
β copaene	0.12
γ amorphene	0.10
trans-cadina-1(6),4-diene	0.09
β bourbonene	0.08
trans-cadina-1,4-diene	0.06
β alaskene	0.06
1-epi-bicyclosesquiphellandrene	0.05
thujopsene	0.05
β elemene	0.05
trans-muurola-3,5-diene	0.04
β cubebene	0.04
α cedrene	0.04
α acoradiene	0.03
α cadinene	0.03
β cadinene	0.03
β selinene	0.03
cuparene	0.02
α calacorene	0.02
2-epi α funebrene	0.02
(E) γ bisabolene	0.02
longifolene	0.01
7-epi-sesquithujene	0.01
ar-curcumene	0.01
zonarene	0.01

Sesquiterpenols 5.53%

cedrol	2.61
cedrol	2.61
allo-aromadendrene epoxide	0.15
α cadinol	0.05
allo-cedrol	0.04
α acorenol	0.04
1,10-di-epi-cubenol	0.03

Client  **Source** 

Nature's Gift

Cypress (*Cupressus sempervirens*)
FR-59299

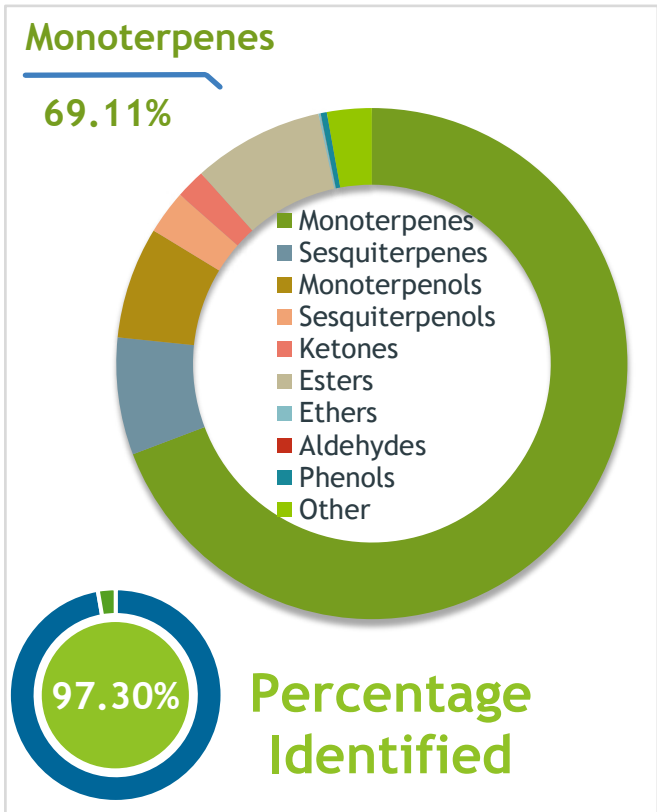
Sample Cypress (*Cupressus sempervirens*)
Batch #:..... FR-59299
Type:..... Essential Oil
CAS Number:... 8013-86-3
Nature's Gift

Client  **Website** 

Nature's Gift

Primary

<u>36.01%</u>	<u>alpha-Pinene</u>
<u>15.73%</u>	<u>delta-3-Carene</u>
<u>6.11%</u>	<u>alpha-Terpinyl acetate</u>



Result 

Conclusion No adulterants, diluents, or contaminants were detected via this method. This oil meets the expected profile for genuine Essential Oil of Cypress (*Cupressus sempervirens*)

Internal Number: | EVS-5443


Essential Validation Services
747 SW 2nd Ave IMB 12 Suite 306
Gainesville, FL 32601
317.361.5044 |
<https://essentialvalidationservices.com/>
Alan Christen

Monoterpenes	69.11%	69.11%
Sesquiterpenes	7.40%	7.40%
Monoterpenols	7.06%	7.06%
Sesquiterpenols	2.77%	2.77%
Ketones	1.87%	1.87%
Esters	8.27%	8.27%
Ethers	0.13%	0.13%
Aldehydes	0.01%	0.01%
Phenols	0.39%	0.39%
Other	2.82%	2.82%

Client



Source

Cypress (*Cupressus sempervirens*)

FR-59299

Total Percentage		97.30%		
Number	RT	Area %	Compound Name	Chemical Family
1	6.92	0.04%	Bornylene	Monoterpene
2	7.53	0.18%	Tricyclene	Monoterpene
3	7.71	0.85%	alpha-Thujene	Monoterpene
4	8.04	36.01%	alpha-Pinene	Monoterpene
5	8.48	0.69%	alpha-Fenchene	Monoterpene
6	8.54	0.17%	Camphene	Monoterpene
7	8.70	0.05%	Thuja-2,4(10)-diene	Monoterpene
8	9.48	2.48%	Sabinene	Monoterpene
9	9.63	0.99%	beta-Pinene	Monoterpene
10	10.23	2.71%	Myrcene	Monoterpene
11	10.69	0.01%	alpha-Phellandrene	Monoterpene
12	11.02	15.73%	delta-3-Carene	Monoterpene
13	11.32	0.61%	alpha-Terpinene	Monoterpene
14	11.45	0.06%	para-Cymene	Monoterpene
15	11.65	1.02%	ortho-Cymene	Monoterpene
16	11.87	3.40%	Limonene	Monoterpene
17	12.24	0.08%	(Z)-beta-Ocimene	Monoterpene
18	12.69	0.04%	(E)-beta-Ocimene	Monoterpene
19	13.16	1.14%	gamma-Terpinene	Monoterpene
20	13.71	0.10%	cis-Linalool oxide (5) (furanoid)	Monoterpenol
21	13.84	0.01%	1-Octanol	Aliphatic Alcohol
22	14.21	0.13%	Isoterpinolene	Monoterpene
23	14.38	2.50%	Terpinolene	Monoterpene
24	14.58	0.12%	para-Cymenene	Monoterpene
25	15.13	1.92%	Linalool	Monoterpenol
26	15.25	0.02%	Hotrienol	Monoterpenol
27	15.40	0.05%	alpha-Pinene oxide	Monoterpene Ether
28	15.62	0.02%	trans-para-Mentha-2,8-dien-1-ol	Monoterpenol
29	15.88	0.03%	Fenchol	Monoterpenol
30	16.13	0.04%	cis-para-Menth-2-en-1-ol	Monoterpenol
31	16.22	0.01%	alpha-Campholene aldehyde	Monoterpene Aldehyde
32	16.39	0.01%	Alloocimene	Monoterpene
33	16.49	0.02%	cis-Limonene oxide	Monoterpene Ether
34	16.69	0.01%	Terpinen-1-ol	Monoterpenol
35	16.82	0.09%	trans-Pinocarveol	Monoterpenol

Client



Source

Cypress (*Cupressus sempervirens*)

FR-59299

Number	RT	Area %	Compound Name	Chemical Family
36	17.063	0.26%	Camphor	Monoterpenol
37	17.54	1.44%	Karahanaenone	Monoterpene Ketone
38	18.19	0.09%	Umbellulone	Monoterpene Ketone
39	18.32	0.10%	para-Mentha-1,5-dien-8-ol	Monoterpenol
40	18.40	0.01%	Pinocamphone	Monoterpene Ketone
41	18.72	3.37%	Terpinen-4-ol	Monoterpenol
42	19.04	0.20%	para-Cymen-8-ol	Monoterpenol
43	19.40	1.05%	alpha-Terpineol	Monoterpenol
44	19.78	0.07%	trans-Carveol	Monoterpenol
45	19.85	0.05%	Verbenone	Monoterpene Ketone
46	21.28	0.04%	beta-Cyclocitral	Monoterpene
47	21.41	0.39%	Methyl carvacrol	Phenylpropanoid
48	21.55	0.02%	Carvone	Monoterpene Ketone
49	21.74	0.07%	nor-Davanone	Furan
50	21.97	0.15%	Linalyl acetate	Monoterpene Ester
51	23.30	0.02%	9.64 Linalool oxide acetate<trans->(pyranoid	0.00
52	23.38	0.20%	Bornyl acetate	Monoterpene Ester
53	23.87	1.16%	Terpinen-4-yl acetate	Monoterpene Ester
54	24.05	0.02%	cis-Verbenyl acetate	Monoterpene Ester
55	24.22	0.04%	Thymol	Monoterpenol
56	25.60	0.47%	delta-Terpinyl acetate	Monoterpene Ester
57	26.19	6.11%	alpha-Terpinyl acetate	Monoterpene Ester
58	27.32	0.21%	alpha-Copaene	Sesquiterpene
59	27.54	0.02%	2-epi-alpha-Funebrene	Sesquiterpene
60	27.63	0.08%	beta-Bourbonene	Sesquiterpene
61	27.86	0.04%	beta-Cubebene	Sesquiterpene
62	27.94	0.05%	beta-Elemene	Sesquiterpene
63	28.56	0.01%	7-epi-Sesquithujene	Sesquiterpene
64	28.63	0.01%	Longifolene	Sesquiterpene
65	28.91	1.54%	beta-Cedrene	Sesquiterpene
66	29.10	0.44%	beta-Caryophyllene	Sesquiterpene
67	29.41	0.04%	alpha-Cedrene	Sesquiterpene
68	29.55	0.12%	beta-Copaene	Sesquiterpene
69	29.71	0.05%	Thujopsene	Sesquiterpene
70	30.22	0.04%	trans-Muurola-3,5-diene	Sesquiterpene
71	30.58	0.35%	alpha-Humulene	Sesquiterpene

ESSENTIAL VALIDATION SERVICES | 74 / SW 2ND AVE GAINESVILLE, FLORIDA 32601 | 351-301-3044

Client



Source

Cypress (*Cupressus sempervirens*)

FR-59299

72	30.87	0.31%	cis-Muurolo-4(14),5-diene	Sesquiterpene
73	31.05	0.03%	beta-Acoradiene	Sesquiterpene
74	31.31	0.09%	trans-Cadina-1(6),4-diene	Sesquiterpene
75	31.45	0.34%	gamma-Muuroloene	Sesquiterpene
76	31.65	1.65%	Germacrene D	Sesquiterpene
77	31.74	0.01%	ar-Curcumene	Sesquiterpene
78	31.95	0.03%	beta-Selinene	Sesquiterpene
79	32.06	0.05%	1-epi-Bicyclosesquiphellandrene	Monoterpene
80	32.15	0.10%	gamma-Amorphene	Sesquiterpene
81	32.24	0.06%	beta-Alaskene	Sesquiterpene
82	32.34	0.15%	28.88 Epizonarene	0.00
83	32.42	0.27%	alpha-Muuroloene	Sesquiterpene
84	32.58	0.03%	beta-Cadinene	Sesquiterpene
85	32.71	0.02%	Cuparene	Sesquiterpene
86	32.89	0.40%	alpha-Alaskene	Sesquiterpene
87	32.96	0.13%	gamma-Cadinene	Sesquiterpene
88	33.21	0.79%	delta-Cadinene	Sesquiterpene
89	33.36	0.01%	Zonarene	Sesquiterpene
90	33.58	0.02%	trans-gamma-Bisabolene	Sesquiterpene
91	33.73	0.06%	trans-Cadina-1,4-diene	Sesquiterpene
92	33.89	0.03%	alpha-Cadinene	Sesquiterpene
93	34.03	0.02%	alpha-Calacorene	Sesquiterpene
94	35.55	0.06%	Caryophyllene oxide	Sesquiterpene Ether
95	36.07	0.04%	allo-Cedrol	Sesquiterpenol
96	36.57	2.61%	Cedrol	Sesquiterpenol
97	37.37	0.03%	1,10-di-epi-Cubenol	Sesquiterpenol
98	37.51	0.04%	alpha-Acorenol	Sesquiterpenol
99	37.75	0.15%	allo-Aromadendrene epoxide	Sesquiterpene Ester
100	38.39	0.05%	alpha-Cadinol	Sesquiterpenol
101	49.75	0.01%	Manool oxide	Diterpene Ester
102	51.63	0.02%	Abietatriene	Diterpene
103	52.58	0.01%	Abietadiene	Diterpene
104	58.19	0.01%	Totarol	Diterpene

ESSENTIAL VALIDATION SERVICES | 141 SW 2nd AVE GAINESVILLE, FLORIDA 32601 | 351-361-5044

- Essential Oil testing is performed by using qualitative GC-MS. Method: SOP.T.01 Client Method
 - This report may not be published without the consent of Essential Validation Services.
 - Chromatograph image may be requested
 - This report is valid for 1 year from the analyzed date