

Copaiba Balsam

Copaifera officinalis

Brazil

Batch #BR-59145

Sesquiterpenes 96.07%

β caryophyllene	50.98
α humulene	8.14
trans α bergamotene	6.35
α copaene	5.15
germacrene d	5.04
γ elemene	3.51
δ cadinene	2.32
β bisabolene	2.29
α muurolene	1.92
β elemene	1.86
α cubebene	0.87
γ cadinene	0.84
α selinene	0.71
δ elemene	0.67
β selinene	0.64
γ muurolene	0.57
alloaromadendrene	0.50
(Z) β farnesene	0.47
β cubebene	0.39
cyperene	0.33
(Z) α bisabolene	0.31
β sesquiphellandrene	0.29
(E) α bisabolene	0.24
germacrene B	0.23
selina-3,7(11)-diene	0.23
β copaene	0.19
epi β santalene	0.15
aromadendrene	0.14
trans cadina-1(6),4-diene	0.14

Sesquiterpenes

(E) cadina-1,4-diene	0.11
α Ylangene	0.11
viridiflorene	0.11
γ gurjunene	0.08
(E) γ bisabolene	0.06
α gurjunene	0.05
longicyclene	0.03
β humulene	0.03
cis-caryophyllene	0.02

Sesquiterpenols 1.55%

junenol	0.32
caryophyllenyl alcoh	0.32
α cadinol	0.21
α muurolol	0.2
τ muurolol	0.13
τ cadinol	0.07
1,10-d-epi cubenol	0.06
viridiflorol	0.05
maaliol	0.05
ledol	0.05
globulol	0.03
β bisabolol	0.03
epi α bisabolol	0.02
1 epi cubenol	0.01

Monoterpenes 0.16%

(Z) β ocimene	0.11
alloocimene	0.04
(E) β ocimene	0.01

Monoterpenols 0.32%

carophyllenyl alcohol	0.32
-----------------------	------

Esters 0.03%

(Z) sesquisabinene hydrate	0.03
----------------------------	------

Ethers / Oxides 0.29%

caryophellene oxide	0.27
humulene epoxide II	0.02

Ketones 0.05%

Junipercamphor	0.05
----------------	------

Client



Source



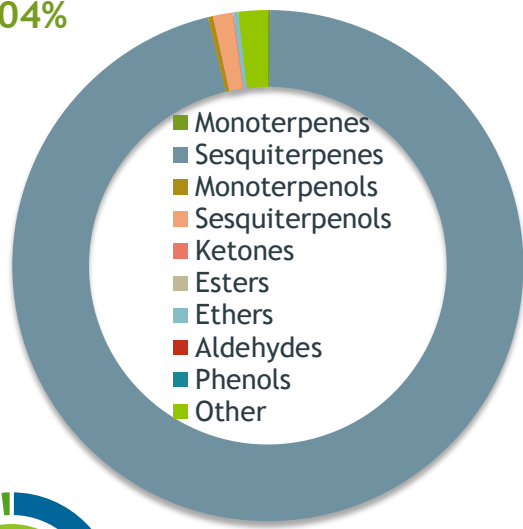
Copaiba Balsam (*Copaifera officinalis*)
BR-59145

Sample

Copaiba Balsam (*Copaifera officinalis*)
Batch #:..... BR-59145
Type:..... Essential Oil
CAS Number:... 8001-61-4
Nature's Gift

Sesquiterpenes

96.04%



Client



Website



Primary

50.98% | beta-Caryophyllene
8.14% | alpha-Humulene
6.35% | trans-alpha-Bergamotene



Percentage Identified

Result



Conclusion

No adulterants, diluents, or contaminants were detected via this method. This oil meets the expected profile for genuine Essential Oil of Copaiba Balsam (*Copaifera officinalis*)

Internal Number: | EVS-4189



Essential Validation Services

747 SW 2nd Ave IMB 12 Suite 306
Gainesville, FL 32601

317.361.5044 | <https://essentialvalidationservices.com/>

Alan Christen

Monoterpenes	0.16%
Sesquiterpenes	96.04%
Monoterpenols	0.32%
Sesquiterpenols	1.23%
Ketones	0.05%
Esters	0.03%
Ethers	0.29%
Aldehydes	0.00%
Phenols	0.00%
Other	1.85%

ESSENTIAL VALIDATION SERVICES | 747 SW 2ND AVE GAINESVILLE, FLORIDA 32601 | 317-361-5044

Client



Source

Copaiba Balsam (*Copaifera officinalis*)

BR-59145

Total Percentage		98.15%		
Number	RT	Area %	Compound Name	Chemical Family
1	12.66	0.11%	(Z)-beta-Ocimene	Monoterpene
2	13.12	0.01%	(E)-beta-Ocimene	Monoterpene
3	16.85	0.04%	Alloocimene	Monoterpene
4	26.13	0.67%	delta-Elemene	Sesquiterpene
5	26.65	0.87%	alpha-Cubebene	Sesquiterpene
6	27.48	0.03%	Longicyclene	Sesquiterpene
7	27.57	0.11%	alpha-Ylangene	Sesquiterpene
8	27.86	5.15%	alpha-Copaene	Sesquiterpene
9	28.39	0.39%	beta-Cubebene	Sesquiterpene
10	28.47	1.86%	beta-Elemene	Sesquiterpene
11	28.93	0.33%	Cyperene	Sesquiterpene
12	29.05	0.02%	cis-Caryophyllene	Sesquiterpene
13	29.17	0.05%	alpha-Gurjunene	Sesquiterpene
14	29.82	50.98%	beta-Caryophyllene	Sesquiterpene
15	30.00	0.03%	beta-Humulene	0.00
16	30.15	3.51%	gamma-Elemene	Sesquiterpene
17	30.34	6.35%	trans-alpha-Bergamotene	Sesquiterpene
18	30.44	0.14%	Aromadendrene	Sesquiterpene
19	30.63	0.47%	(Z)-beta-Farnesene	Sesquiterpene
20	30.88	0.15%	epi-beta-Santalene	Sesquiterpene
21	30.96	0.19%	beta-Copaene	Sesquiterpene
22	31.16	8.14%	alpha-Humulene	Sesquiterpene
23	31.31	0.50%	allo-Aromadendrene	Sesquiterpene
24	31.58	0.08%	gamma-Gurjunene	Sesquiterpene
25	31.85	0.14%	trans-Cadina-1(6),4-diene	Sesquiterpene
26	31.99	1.92%	alpha-Murolene	Sesquiterpene
27	32.20	5.04%	Germacrene D	Sesquiterpene
28	32.35	0.57%	gamma-Murolene	Sesquiterpene
29	32.48	0.64%	beta-Selinene	Sesquiterpene
30	32.61	0.11%	Viridiflorene	Sesquiterpene
31	32.78	0.71%	alpha-Selinene	Sesquiterpene
32	33.10	0.31%	cis-alpha-Bisabolene	Sesquiterpene
33	33.37	2.29%	beta-Bisabolene	Sesquiterpene
34	33.48	0.84%	gamma-Cadinene	Sesquiterpene
35	33.75	2.32%	delta-Cadinene	Sesquiterpene

Client



Source

Copaiba Balsam (*Copaifera officinalis*)

BR-59145

Number	RT	Area %	Compound Name	Chemical Family
36	33.962	0.29%	beta-Sesquiphellandrene	Sesquiterpene
37	34.09	0.06%	trans-gamma-Bisabolene	Sesquiterpene
38	34.25	0.11%	trans-Cadina-1,4-diene	Sesquiterpene
39	34.39	0.23%	Selina-3,7(11)-diene	Sesquiterpene
40	34.65	0.24%	trans-alpha-Bisabolene	Sesquiterpene
41	34.90	0.03%	cis-Sesquisabinene hydrate	Monoterpene Ester
42	35.20	0.23%	Germacrene B	Sesquiterpene
43	35.61	0.05%	Maaliol	Sesquiterpenol
44	35.83	0.32%	Caryophyllenyl alcohol	Monoterpenol
45	36.08	0.27%	Caryophyllene oxide	Sesquiterpene Ether
46	36.25	0.03%	Globulol	Sesquiterpenol
47	36.57	0.05%	Viridiflorol	Sesquiterpenol
48	36.96	0.05%	Ledol	Sesquiterpenol
49	37.14	0.02%	Humulene epoxide II	Sesquiterpene Ether
50	37.60	0.32%	Junenol	Sesquiterpenol
51	37.88	0.06%	1,10-di-epi-Cubenol	Sesquiterpenol
52	38.10	0.01%	1-epi-Cubenol	Sesquiterpenol
53	38.43	0.07%	T-Cadinol	Sesquiterpenol
54	38.49	0.13%	T-Muurolol	Sesquiterpenol
55	38.59	0.20%	alpha-Muurolol	Sesquiterpenol
56	38.90	0.21%	alpha-Cadinol	Sesquiterpenol
57	39.56	0.03%	beta-Bisabolol	Sesquiterpenol
58	40.06	0.02%	epi-alpha-Bisabolol	Sesquiterpenol
59	40.41	0.05%	Junipercamphor	Sesquiterpene Ketone

ESSENTIAL VALIDATION SERVICES | 14 / SW 2nd AVE GAINESVILLE, FLORIDA 32601 | 352-351-5044