



## Clove Bud

*Eugenia caryophyllus*

Batch No. MG-59361

Madagascar

### Monoterpenes 1.85%

limonene	1.20
α pinene	0.23
γ terpinene	0.14
β pinene	0.13
sabinene	0.07
para-cymene	0.05
myrcene	0.02
terpinolene	0.01

### Monoterpenols 0.25%

linalool	0.14
α terpineol	0.06
terpinen-4-ol	0.05

### Aldehydes 0.06%

geranial	0.03
(E)-2-tridecenal	0.03

### Esters 10.25%

eugenyl acetate	16.86
neryl acetate	3.12
methyl salicylate	0.19
neryl propionate	0.04
linalyl acetate	0.03
geranyl acetate	0.01

### Sesquiterpenes 12.45%

β caryophyllene	9.52
α humulene	1.24
γ curcumene	0.43
β selinene	0.28
α copaene	0.25
italicene	0.23
α selinene	0.18
(E,E) α farnesene	0.10
γ selinene	0.06
(Z) α bergamotene	0.04
α ylangene	0.03
allo-aromadendrene	0.03
α muurolene	0.03
β elemene	0.02
γ cadinene	0.01

### Sesquiterpenols 0.08%

pogostol	0.08
----------	------

### Ethers 1.13%

caryophyllene oxide	0.77
humulene epoxide II	0.07
1,8 cineole	0.27
allo-aromadendrene epo:	0.02

### Phenols 62.32%

eugenol	62.21
chavicol	0.11

### Other 0.05%

1-tetradecene	0.03
furfural	0.02

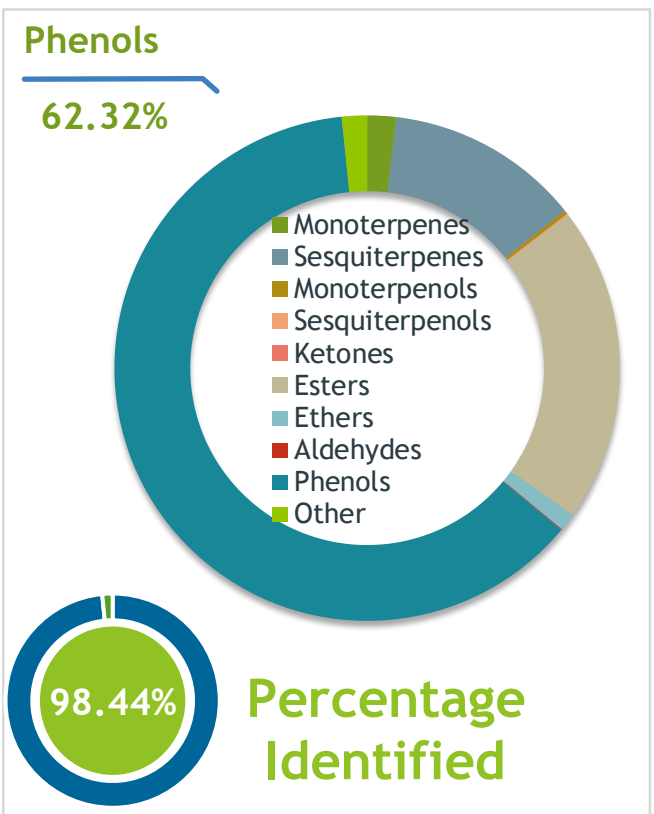
Client	 Nature's Gift	Source	
--------	---	--------	--

Clove Bud (*Eugenia Caryophyllata*)  
 MG-59361 - Madagascar

Sample	Clove Bud ( <i>Eugenia Caryophyllata</i> ) Identification #: MG-59361 Type:..... Essential Oil CAS Number:... 8000-34-8 <p style="text-align: center; color: #76923c;">Nature's Gift</p>
--------	--

Properties	Country Of Origin   Madagascar Specific Gravity   NT Refractive Index   NT
------------	--

Primary	<table border="0"> <tr> <td style="padding-right: 10px;"><u>62.21%</u></td> <td><u>Eugenol</u></td> </tr> <tr> <td style="padding-right: 10px;"><u>16.86%</u></td> <td><u>Eugenyl acetate</u></td> </tr> <tr> <td style="padding-right: 10px;"><u>9.52%</u></td> <td><u>beta-Caryophyllene</u></td> </tr> </table>	<u>62.21%</u>	<u>Eugenol</u>	<u>16.86%</u>	<u>Eugenyl acetate</u>	<u>9.52%</u>	<u>beta-Caryophyllene</u>
<u>62.21%</u>	<u>Eugenol</u>						
<u>16.86%</u>	<u>Eugenyl acetate</u>						
<u>9.52%</u>	<u>beta-Caryophyllene</u>						



Result	 10/19/2023
--------	---

Conclusion	<p>No adulterants, diluents, or contaminants were detected via this method. This oil meets the expected profile for genuine Essential Oil of Clove Bud (<i>Eugenia Caryophyllata</i>)</p> <p>Internal Number:   EVS-5870</p>
------------	--

**Essential Validation Services**

747 SW 2nd Ave IMB 12 Suite 306  
 Gainesville, FL 32601

317.361.5044 |  
<https://essentialvalidationservices.com/>



Monoterpenes		1.85%
Sesquiterpenes		12.4
Monoterpenols		0.25%
Sesquiterpenols		0.08%
Ketones		0.00%
Esters		20.27%
Ethers		1.11%
Aldehydes		0.06%
Phenols		62.32%
Other		1.61%

ESSENTIAL VALIDATION SERVICES | 747 SW 2ND AVE GAINESVILLE, FLORIDA 32601 | 317-361-5044

Client



Source

Clove Bud (*Eugenia Caryophyllata*)

MG-59361

Total Percentage		98.44%		
Number	RT	Area %	Compound Name	Chemical Family
1	5.18	0.02%	Furfural	Furan
2	8.37	0.23%	alpha-Pinene	Monoterpene
3	9.94	0.07%	Sabinene	Monoterpene
4	10.10	0.13%	beta-Pinene	Monoterpene
5	10.68	0.02%	Myrcene	Monoterpene
6	12.14	0.05%	para-Cymene	Monoterpene
7	12.34	1.20%	Limonene	Monoterpene
8	12.44	0.27%	1,8-Cineole	Monoterpene Ether
9	13.66	0.14%	gamma-Terpinene	Monoterpene
10	14.89	0.01%	Terpinolene	Monoterpene
11	15.61	0.14%	Linalool	Monoterpenol
12	19.22	0.05%	Terpinen-4-ol	Monoterpenol
13	19.74	0.19%	Methyl salicylate	Phenolic Ester
14	19.90	0.06%	alpha-Terpineol	Monoterpenol
15	22.46	0.03%	Linalyl acetate	Monoterpene Ester
16	22.67	0.11%	Chavicol	Phenylpropanoid
17	23.24	0.03%	Geranial	Monoterpene Aldehyde
18	27.12	62.21%	Eugenol	Phenylpropanoid
19	27.27	3.12%	Neryl acetate	Monoterpene Ester
20	27.52	0.03%	alpha-Ylangene	Sesquiterpene
21	27.85	0.25%	alpha-Copaene	Sesquiterpene
22	28.10	0.01%	Geranyl acetate	Monoterpene Ester
23	28.46	0.02%	beta-Elemene	Sesquiterpene
24	28.72	0.03%	1-Tetradecene	Alkene
25	29.05	0.23%	Italicene	Sesquiterpene
26	29.46	0.04%	cis-alpha-Bergamotene	Sesquiterpene
27	29.66	9.52%	beta-Caryophyllene	Sesquiterpene
28	30.87	0.03%	allo-Aromadendrene	Sesquiterpene
29	30.98	0.04%	Neryl propionate	Monoterpene Ester
30	31.09	1.24%	alpha-Humulene	Sesquiterpene
31	31.86	0.06%	gamma-Selinene	Sesquiterpene
32	32.10	0.43%	gamma-Curcumene	Sesquiterpene
33	32.45	0.28%	beta-Selinene	Sesquiterpene
34	32.75	0.18%	alpha-Selinene	Sesquiterpene
35	32.92	0.03%	alpha-Murolene	Sesquiterpene

