



316 Old Hickory Blvd East, Madison, TN 37115

tel (615)612-4270 fax (615)860-9171

sold@naturesgift.com

Balancing Body, Mind and Spirit with Pure Essential Oils

Since 1995

www.naturesgift.com

Bergamot

Citrus bergamia

Batch No. IT-59358

Italy

Monoterpenes 49.85%		Aldehydes 0.71%		Sesquiterpenes 1.64%	
limonene	35.88	geranial	0.35	β bisabolene	0.57
γ terpinene	6.12	neral	0.21	β caryophyllene	0.44
β pinene	3.68	decanal	0.07	(E) α bergamotene	0.41
myrcene	1.27	nonanal	0.04	germacrene D	0.06
α pinene	0.84	octanal	0.03	(E) β farnesene	0.05
sabinene	0.77	citronellal	0.01	α humulene	0.05
(E) β ocimene	0.29			(Z) α bisabolene	0.04
terpinolene	0.28			bicyclogermacrene	0.02
para-cymene	0.23				
α thujene	0.22				
α terpinene	0.14				
(Z) β ocimene	0.07				
α phellandrene	0.04				
camphene	0.02				
		Esters 35.68%		Ketones 0.16%	
		linalyl acetate	34.09	carvone	0.08
		neryl acetate	0.65	nootkatone	0.05
		geranyl acetate	0.57	6-methyl-5-hepten-2-	0.03
		α terpinyl acetate	0.15		
		octyl acetate	0.15		
		linalyl propionate	0.02		
		nonyl acetate	0.02		
		citronellyl acetate	0.02		
		hexyl acetate	0.01		
Monoterpenols 11.49%				Other 0.15%	
linalool	10.78			iso-bergaptene	0.11
α terpineol	0.46			nonacosane	0.02
terpinen-4-ol	0.13			pentacosane	0.01
nerol	0.05			heptacosane	0.01
trans sabinene hydrate	0.04				
δ terpineol	0.02				
citronellol	0.01				

Date of Analysis: 10/16/2023

Client



Source



Bergamot (Citrus bergamia)
IT-59358 - Italy

Sample

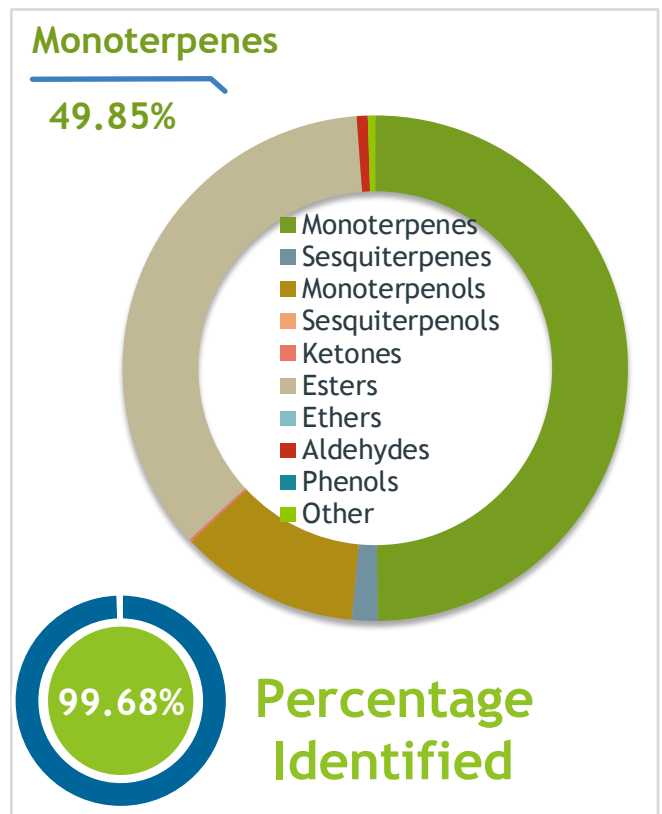
Bergamot (Citrus bergamia)
 Identification #: IT-59358
 Type:..... Essential Oil
 CAS Number:... 8007-75-8
Nature's Gift

Properties

Country Of Origin | Italy
 Specific Gravity | NT
 Refractive Index | NT

Primary

35.88% | Limonene
34.09% | Linalyl acetate
10.78% | Linalool



Result



10/16/2023

Conclusion

No adulterants, diluents, or contaminants were detected via this method. This oil meets the expected profile for genuine Essential Oil of Bergamot (Citrus bergamia)

Internal Number: | EVS-5860



Essential Validation Services

747 SW 2nd Ave IMB 12 Suite 306
Gainesville, FL 32601

317.361.5044 |
<https://essentialvalidationservices.com/>



Monoterpenes	49.85%	49.85
Sesquiterpenes	1.64%	1.64
Monoterpenols	11.49	11.49
Sesquiterpenols	0.00%	0.00
Ketones	0.16%	0.16
Esters	35.68%	35.68
Ethers	0.00%	0.00
Aldehydes	0.71%	0.71
Phenols	0.00%	0.00
Other	0.47%	0.47

ESSENTIAL VALIDATION SERVICES | 747 SW 2ND AVE GAINESVILLE, FLORIDA 32601 | 317-361-5044

Client



Source

Bergamot (*Citrus bergamia*)

IT-59358

Total Percentage		99.68%		
Number	RT	Area %	Compound Name	Chemical Family
1	8.16	0.22%	alpha-Thujene	Monoterpene
2	8.42	0.84%	alpha-Pinene	Monoterpene
3	9.04	0.02%	Camphene	Monoterpene
4	9.98	0.77%	Sabinene	Monoterpene
5	10.15	3.68%	beta-Pinene	Monoterpene
6	10.54	0.03%	6-Methyl-5-hepten-2-one	Aliphatic Ketone
7	10.73	1.27%	Myrcene	Monoterpene
8	11.33	0.03%	Octanal	Aliphatic Aldehyde
9	11.39	0.04%	alpha-Phellandrene	Monoterpene
10	11.74	0.01%	Hexyl acetate	Aliphatic Ester
11	11.86	0.14%	alpha-Terpinene	Monoterpene
12	12.21	0.23%	para-Cymene	Monoterpene
13	12.49	35.88%	Limonene	Monoterpene
14	12.78	0.07%	(Z)-beta-Ocimene	Monoterpene
15	13.24	0.29%	(E)-beta-Ocimene	Monoterpene
16	13.73	6.12%	gamma-Terpinene	Monoterpene
17	14.24	0.04%	trans-Sabinene hydrate	Monoterpenol
18	14.94	0.28%	Terpinolene	Monoterpene
19	15.72	10.78%	Linalool	Monoterpenol
20	15.89	0.04%	Nonanal	Aliphatic Aldehyde
21	18.06	0.01%	Citronellal	Monoterpene Aldehyde
22	18.83	0.02%	delta-Terpineol	Monoterpenol
23	19.28	0.13%	Terpinen-4-ol	Monoterpenol
24	19.97	0.46%	alpha-Terpineol	Monoterpenol
25	20.56	0.07%	Decanal	Aliphatic Aldehyde
26	20.79	0.15%	Octyl acetate	Aliphatic Ester
27	21.38	0.05%	Nerol	Monoterpenol
28	21.65	0.01%	Citronellol	Monoterpenol
29	21.95	0.21%	Neral	Monoterpene Aldehyde
30	22.15	0.08%	Carvone	Monoterpene Ketone
31	22.63	34.09%	Linalyl acetate	Monoterpene Ester
32	23.30	0.35%	Geranial	Monoterpene Aldehyde
33	25.23	0.02%	Nonyl acetate	Monoterpene Ester
34	26.11	0.02%	Linalyl propionate	Monoterpene Ester
35	26.71	0.15%	alpha-Terpinyl acetate	Monoterpene Ester

ESSENTIAL VALIDATION SERVICES | 747 SW 2ND AVE GAINESVILLE, FLORIDA 32601 | 317-361-5044

Client



Source



Bergamot (Citrus bergamia)
IT-59358

Number	RT	Area %	Compound Name	Chemical Family
36	26.921	0.02%	Citronellyl acetate	Monoterpene Ester
37	27.29	0.65%	Neryl acetate	Monoterpene Ester
38	28.13	0.57%	Geranyl acetate	Monoterpene Ester
39	29.68	0.44%	beta-Caryophyllene	Sesquiterpene
40	30.34	0.41%	trans-alpha-Bergamotene	Sesquiterpene
41	31.15	0.05%	alpha-Humulene	Sesquiterpene
42	31.22	0.05%	(E)-beta-Farnesene	Sesquiterpene
43	32.21	0.06%	Germacrene D	Sesquiterpene
44	32.81	0.02%	Bicyclgermacrene	Sesquiterpene
45	33.12	0.04%	cis-alpha-Bisabolene	Sesquiterpene
46	33.39	0.57%	beta-Bisabolene	Sesquiterpene
47	44.08	0.05%	Nootkatone	Sesquiterpene Ketone
48	52.03	0.11%	iso-Bergaptene	Coumarin
49	60.22	0.01%	Pentacosane	Alkane
50	61.33	0.01%	Heptacosane	Alkane
51	62.39	0.02%	Nonacosane	Alkane

ESSENTIAL VALIDATION SERVICES | 747 SW 2ND AVE GAINESVILLE, FLORIDA 32601 | 317-361-5044